

TOOLS OF THE TRADE ... at Taylor's CC of Charleston



CHARLESTON, S.C. — Kevin Taylor has been head superintendent at famed Charleston Country Club since 1994, four years after graduating from Clemson University.

Now a certified golf course superintendent, he first worked at the Links Course at Wild Dunes outside Charleston, then as assistant superintendent at Marsh Point Golf Club on Kiawah Island. In 1992 he became head superintendent at PGA National Golf Club's General Course in Palm Beach Gardens, Fla. He was promoted to superintendent at PGA National's Champion Course in 1993 — his last stop before Charleston. He became interested in the greenskeeping profession while working four summers at Fox Chapel Golf Club in his hometown of Pittsburgh.



Kevin Taylor



A lift for heavy equipment is a crucial part of the maintenance complex at Country Club of Charleston.

- Greens Mowers:** 4 Toro 1000, 1 Toro Greensmaster 3100
- Tee Mowers:** 4 Toro 1000
- Fairway Mowers:** 2 Toro 6500, 2 Toro Greensmaster 3100 (3WD)
- Rough Mowers:** 1 John Deere 105 hydraulic 7-gang, 1 Ransomes 72-inch deck, 1 John Deere 2653, 1 Toro 2600
- Riding Bunker Rake:** 1 Toro 5000
- Turf Utility Vehicles:** 8 E-Z-GO Work-

**CAN'T LIVE WITHOUT:
Wife, Cheryl, and
daughter, Jessica**

horse, 2 Toro Workman, 2 Carryall
Verti-Cut Reels: 2 Toro Aerothatch, 2 sets of Triplex mount verticut-cutreels

**OLDEST PIECE OF EQUIPMENT:
1972 Lincoln
ArcWelder**

- for greens and tees
- Aerifiers:** 2 Toro Greens Aerifier, 1 Vertidrain, 1 Aerocore
- Topdressers:** 1 Cushman 5th Wheel Topdresser
- Grooming Reels:** N/A
- Tournament Speed Roller:** 1 Set Ture Surface Vitratory Rollers
- Reel Grinder:** Foley Accu 600
- Bedknife Grinder:** Foley Accu 610
- Irrigation Pump Station:** PSI 1250 GPM
- Irrigation System:** Toro Network 8000 (SitePro handheld controllers)
- Golf Car Fleet:** 55 E-Z-GO electric
- Flagsticks:** Standard Golf
- Computer & Accessories:** Microstar and HP710C printer
- Primary herbicide:** MSMA
- Primary pesticide:** Dursban
- Primary fungicide:** Chipco 26019
- Primary slow-release fertilizer:** Nutralene
- Total square footage of the maintenance building(s):** 10,000 sq. ft.
- Annual rounds of golf:** 33,000 to 34,000
- Normal green speed:** 9-10

perception



REALITY

Our competitors would have you believe that Watertronics only builds small and simple pump stations. The truth is, we custom engineer and build *all* sizes, from great compact models to sophisticated 10,000 GPM systems, with superior features like:

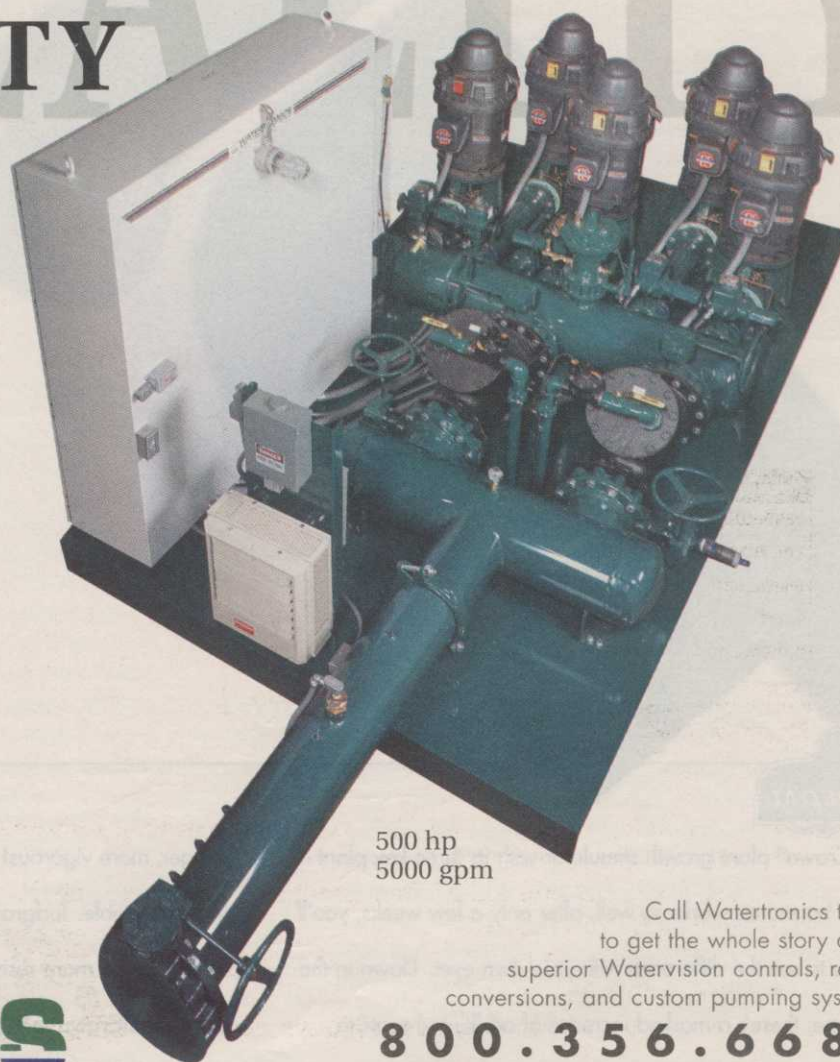
- Watervision™ touch screen controls
- Surge-free electronic butterfly valves provide automatic backup regulation if the VFD fails
- Dripless turbine pump mechanical seals
- Factory verified performance testing
- U.L. panel and complete station registration

For over 25 years, discriminating users have chosen Watertronics pumping systems.

Custom built to order, and made to last.



ELECTRONICALLY CONTROLLED PUMPING SYSTEMS™



500 hp
5000 gpm

Call Watertronics today to get the whole story about superior Watervision controls, retrofit conversions, and custom pumping systems:

800.356.6686

525 Industrial Drive • Hartland WI 53029
visit our website: www.watertronics.com