

## BRIEFS

**KAVANAUGH SIGNS ON IN AURORA**

**AURORA, Colo.** — The city's Golf Division has retained Kenneth M. Kavanaugh Golf Course Design of Tucson, Ariz., for The Homestead at Murphy Creek, an 18-hole, daily-fee course. Projected construction date is in the fall. Meanwhile, Kavanaugh is renovating Desert Forest Golf Club in Carefree, Ariz., and adding nine-hole expansions to the existing 27 at Gold Canyon Golf Resort and his existing Quail Creek CC in Green Valley, Ariz.

**PALMER PROJECT UNDERWAY**

**COLUMBUS TOWNSHIP, Mich.** — Ground has been broken at the Arnold Palmer-designed Dunes Columbus National Golf Course. Columbus Development is planning a facility with limited residential development. The 18-hole course will take advantage of the natural features of the site, which include sand dunes, lakes and wooded ravines.



Arnold Palmer

**MEADOWBROOK REOPENING**

**ST. LOUIS** — Meadowbrook Country Club underwent a major renovation here last summer and will reopen this month. Keith Foster was retained to redesign the private club, which included work on all tees, greens and bunkers.

## Phillips leaves Jones, starts own practice

By MARK LESLIE

**G**RANITE BAY, Calif. — Like the Marines, Kyle Phillips is looking for A Few Good Men — owners, that is.

Phillips has opened his own golf course design firm, leaving his position as vice president of design with Robert Trent Jones II after 16 years with the Palo Alto firm.

"I've worked on a lot of different sites — in the Caribbean, Europe and domestically and tackled a lot of problems," Phillips said. "That experience will be helpful. But the owners are very important, and it's crucial to get owners who are not only supportive in the design and construction process, but also in the operation of the golf course including the maintenance, which is so important."

Phillips, 39, has designed about 25 courses since joining Jones shortly after graduating from Kansas State University with a landscape architecture degree. Two of those courses, in particular, he said, reflect what he hopes to continue doing: Wisley Golf Club in London and Granite Bay here.

"They provide very interesting, strategic design, particularly from the opening tee shots," he said. "A lot of the new courses we tend to see today have bracketed [perimeter-weighted] bunkers and you feel you're hitting driver between the uprights on every hole. I've always tried to make the straight shot available, but add the factor of risk and reward, awarding a carry or 'shape' shot..."

"What you find is not only interesting for people who hit



Kyle Phillips at work on site.

the ball a long ways but also for average club member, because with that type of design there is a bailout position for the high-handicapper."

A fan of such classical architects as Alister Mackenzie and A.W. Tillinghast, Phillips said he incorporates their "mid-bunkering" ideas into his designs.

Continued on page 40

## Dream design course taking students to Ireland

**DETROIT** — Golf course architect Ray Hearn is presenting a seminar and itinerary "An Introduction to Golf Course Design on Location in Ireland," Sept. 5-13, that will kick off at Royal Portrush and wind up at Waterville.

The series of seminar and discussion sessions is being coordinated in conjunction with Michigan State University (MSU). Dr. Warren J. Rauhe, MSU professor of landscape architecture, will co-teach.

"The true seaside links of Ireland and Scotland are a must-see," said Hearn from his headquarters in East Lansing. "This trip will be a pilgrimage for anyone inter-

ested in golf course design."

"As a young architect, these courses made a major impact on my design philosophy," added Hearn. "There are so many lessons to be learned over there, to understand why these courses are sought out by so many people around the world."

Participants will play, study and discuss Royal Portrush (Dunluce), Royal Country Down, Portmarnock (Championship), Lahinch (Old), Ballybunion (Old) and Waterville.

Some of the topics that will be covered in the traveling seminar include:

- The history of the game, golf course

architects and Irish golf courses.

- Design and strategy.
- The design/construction process, course routing and greens/tees/fairways/hazards.
- Design your own golf course.

A certificate will be given upon completion of the course.

Hearn established his golf course design firm in 1996 after working 10 years with Michigan architect Jerry Matthews.

For more information contact Ray Hearn in writing at Raymond Hearn Golf Designs, Inc., 271 Woodland Pass, Suite 200, East Lansing, Mich. 48823.

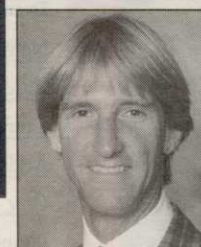


The 18th green complex at Oak Hill Country Club's East Course in Rochester, N.Y., got a Craig Schreiner facelift in 1994. It included bunkers — renovated into the classic style and with resodded faces — and contouring at the rear of the green.

Craig Schreiner is one of a handful of golf course architects who hold degrees in turfgrass management (Ohio State University at Wooster in 1974) and landscape architecture (Oregon State in 1975). He

also worked for Wadsworth Golf Construction Co. and for designers Don Sechrest (from 1985-88) and with Dr. Michael Hurdzan before forming Schreiner Design in 1990.

His Stone Creek Golf Course in Tulsa, a collaboration with Sechrest, and Cobblestone Creek Country Club in Victor, N.Y., assisting Hurdzan, have received high praise.



## Q Schreiner shines on 'classics' & new work

**Golf Course News:** You came to the design business prepared through agronomy and landscape training. How important is that combination?

**Craig Schreiner:** It is the most important part of my background, the main reason why I have been able to get on my feet. It was custom-designed by Mike Hurdzan. I did everything he told me to do. And you know what, it worked. There are a lot of individuals who have segments of it. But very few who have all of them. Get a turf degree and learn how to maintain a golf course. That was a real eye-opener. I learned so much at Baltimore Country Club under [then-superintendent] Meryl Frank in summer of 1983. Then a year working construction for Wadsworth [Golf Course Construction Co.].

**GCN:** How does your agronomic train-

Continued on page 38