

U.S. Golf Association may move museum

DALLAS —The buzz here was that the Executive Committee of The U.S. Golf Association has decided to begin exploratory talks that could result in moving its golf museum from its current site in Far Hills, N.J.

The committee voted at its annual meeting to explore several locations, including Colorado Springs, Colo.; Monterey, Calif.; and Newport, R.I.

Approximately 20,000 people visit the museum annually, leading the Committee to say its historic collection of golf artifacts deserves a wider audience than it has had in Far Hills. The committee stressed, however, that the USGA headquarters will continue to be located in Far Hills.

The panel is not entertaining invitations from additional sites.



Ken May photo

Alice Dye accepts the Donald Rossi Humanitarian Award from son Perry, while Golf Course Builders Association of America outgoing President Jerry Pierman applauds.

Alice O. Dye 'broke mold' in male-dominated field of design

By MARK LESLIE

DALLAS—Hailed as an icon of golf, Alice O'Neal Dye was presented the Golf Course Builders Association of America's Donald A. Rossi Humanitarian Award during the GCSAA's annual banquet here.

Attesting to Dye's influence in pressuring course designers to add forward tees, Dick Nugent of the American Society of Golf Course Architects (ASGCA) said many layouts were not suitable for women golfers "in what I call the pre-Alice Dye Era."

But her tireless work in espousing forward tees has led the entire industry in that direction, he said, adding: "On behalf of the ASGCA, I salute you for honoring Alice Dye. You have chosen a winner and a champion."

"My mom's an icon of golf," said son Perry O. Dye, a worldwide course builder and architect. "In a male-oriented game, we've had to learn to pay attention to those women who were paying for it... Her major desire for golf course architects is to design courses for all levels of play."

His mother, Perry said, "broke the mold" of the all-male world of course architecture.

And, as a mother, "she was always pushing in the right direction and with the right intentions," he added.

The PGA also cited Dye's work at the awards presentation, telling her: "Generations of golf to come will treasure your lifelong contributions to golf."

Dye, who has worked with her husband Pete in designing golf courses for three decades and whose younger son P.B. is also an architect, said, "I'm especially delighted to be honored by the Builders Association because it was the construction end that gave us our first start in golf course building."

The first woman member of the ASGCA, Dye is also an accomplished golfer. The captain of the 1992 U.S. Women's World Team, she played on the victorious 1970 Curtis Cup team and was named Florida Senior Women's Golf of the Year five years in a row.

She holds 10 Indiana Junior Championships, 12 state amateur titles, two U.S. Golf Associations Women's Senior Championships, two Canadian Women's Senior Championships, five Women's Western Senior Championships, the North-South Amateur, Doherty and Eastern championships and numerous other titles.

Over the years she has taught golf to thousands of youths.

THE GLEANER: a core plug pusher



MODEL JP

SPECIFICATIONS

1. Two section blade will follow the contour of any golf green or tee.
2. Three-inch foot pad coming off blade helps catch and push plugs off greens and tees.
3. Unit will not damage green because of articulation of blades and foot pad area on bottom.
4. Blade width is 72 inches.
5. All heavy gauge metal.
6. Weight is 70 pounds.

SAVES TIME, LABOR & MONEY!

1. Go from a 4-man to a 2-man operation; one riding the mower with the plug-pusher, the other picking up plugs IN HALF THE TIME!
2. Easy to mount and dismount from your greensmower.
3. Buy one and keep it 'til you retire.
4. Savings in time and labor will pay for your new plug pusher WITH ONE AERATION!

★ You can remove the plugs from a 7,500 sq. ft. green in about 20 minutes.

★ There is no other product on the market that can remove the plugs from the green quicker and cleaner than THE GLEANER core-plug pusher.

★ There is no cheaper product in the industry to remove your plugs from the green or tees. One use and it pays for itself!

★ Other core-plug removal equipment might take two hours to install. Model TP installs in five minutes.

★ If your mower breaks down, it only takes 5-7 minutes to be up and mowing again with your backup greensmower!



MODEL TP

CALL YOUR LOCAL TORO DISTRIBUTOR TODAY

PHONE OR CONTACT

B.H. SALES
P.O. BOX 3467
SANTA ROSA, CA 95402
(707) 823-2107

CIRCLE #137

PROSEED EMULSION CONTROL REVEGETATION PRODUCTS

PS100

MULCH BLANKET

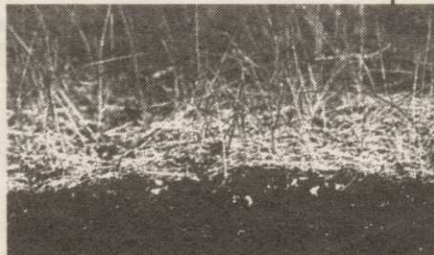
Designed to control soil erosion and promote revegetation on level areas and moderate slopes, the PS100 is a 50 square yard mulch blanket made from natural plant fibers with a non-toxic adhesive binder.



PROSEED USA Inc.
P. O. Box 1250
San Marcos, TX 78667

ADVANTAGES:

- Environmentally sensitive - 100% Biodegradable!
- NO PLASTIC NETTING to bind mowers or remain in the environment.
- Excellent erosion control on level areas to moderate slopes.
- Enhances and protects germination of seeds and plant growth.
- Increases retention of moisture reducing irrigation requirements.
- Reduces the erosive effects of wind and water.
- Easy installation; just roll out and stake down.
- Easily cut for interplanting with plants or trees.
- Reduces labor and equipment cost.



APPLICATIONS:

- Golf Course development and renovation.
- Median, curb and roadside construction.
- Park and Recreation maintenance.
- Sports Turf establishment and renovation.
- Cemetery management.
- Lawn establishment in new home construction.
- Landscape projects.



PS200

SEEDED MULCH BLANKET

An excellent sod alternative, the PS200 is designed to provide an easy and effective way to establish grass or incorporate wildflowers into the landscape. The PS200 comes pre-seeded with common Bermuda, rye or Fescue grass or can be seeded with a special mixture of 18 varieties of annual and perennial wildflowers. Custom seeding orders available on orders of 20 rolls or more. Available in 50 square yard size.

CALL 1-800-243-0105 FOR FREE INFORMATION PACKET!

CIRCLE #138