

## ASCP: Part III

In part 3 of this series on the Audubon Cooperative Sanctuary Program for Golf Courses, ideas for fulfilling the "Wildlife & Habitat Management" category will be presented. Information for this article was gathered through many sources and they are listed at the end of this article.

- ✓ Environmental Planning
- ✓ Member/Public Involvement
- ✓ **Wildlife & Habitat Management**
- ☐ Integrated Pest Management
- ☐ Water Conservation
- ☐ Water Quality Management



Dave Coogan (in hat), environmental technician at Tampa Palms G&CC, demonstrates aquascaping plant materials and techniques at ACSP workshop for wildlife.

## Workshops for Wildlife

The USGA Green Section, Audubon Society of New York, Colliers Reserve Country Club, and Tampa Palms G&CC recently hosted two workshops on the Audubon Cooperative Sanctuary Program for golf courses. The first workshop was Aug. 15 at Colliers Reserve in Naples. Over 50 people were in attendance to learn more about this program. Speakers for the day consisted of Time Hiers, Colliers Reserve; Shelly Foy, USGA Green Section; Ron Dodson, Audubon of New York; Pat Utter, Florida Power & Light; Jeremy Cook, Collier County Waste Management; and Kris DeLaney, botanist.

On Aug. 17, over 30 people attended at the ACSP workshop at Tampa Palms. Host Superintendent Greg Plotner, Ron

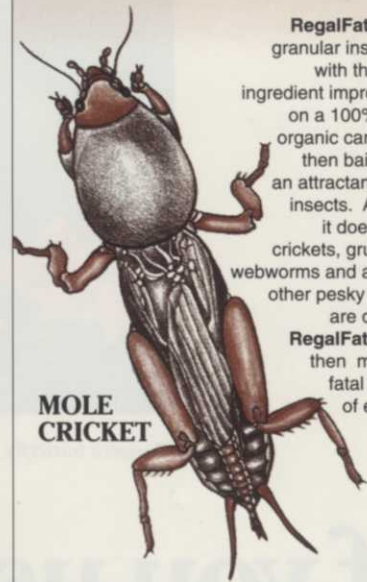
Dodson, and Shelly Foy walked everyone through the ACSP Resource Inventory form and each of the six certification categories. Dave Coogan, Tampa Palms Environmental Technician, gave an informative and entertaining talk on the establishment and management of aquatic plants.

Based on the positive response to the first two workshops, the Palm Beach GCSA will be hosting a third workshop at the Banyan Golf Club in West Palm Beach in January. We are currently searching for a workshop locations in North and Central Florida. If your chapter or club is interested, call Shelly Foy at (407) 546-2620.

—Shelly Foy, USGA Green Section

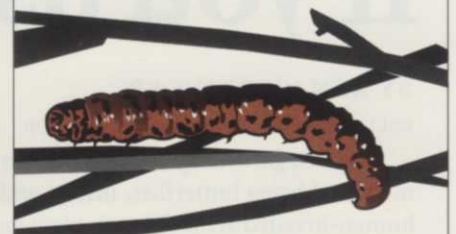
# RegalFate™

## THE FATAL ATTRACTION FOR INSECTS!



**MOLE CRICKET**

RegalFate™ is a granular insecticide with the active ingredient impregnated on a 100% edible organic carrier and then baited with an attractant to lure insects. And lure it does. Mole crickets, grubs, sod webworms and a host of other pesky insects are drawn to RegalFate™ and then make the fatal mistake of eating it.



**SOD WEBWORM**

RegalFate™ is many times more effective because the insect ingests it. Control by contact or vapor action is only partially as effective as the ingested toxicant. Spread the dry granular RegalFate™ for superior results.



Regal Chemical Company

P.O. BOX 900 / ALPHARETTA, GA 30239

PHONE 404-475-4837 / 800-621-5208

## Butterflies can be mostly free —



*Monarch butterfly.*

Photo by The Nature Conservancy

# If you use the proper plants

BY KEN WORKINGER

KELLY GREENS GOLF & COUNTRY CLUB

Butterfly gardening is a way to conserve the natural environment and bring butterflies, insects and other wildlife back to human-invaded areas through plant gardening. When land is plowed and pushed up, native plants are mostly destroyed in the building process and replanted with exotic or popular species to man. By designing and building a butterfly garden using native plants, you not only help bring back the population of butterflies, but you will add a lot of beauty and color to your property.

Butterfly gardening works like this: Butterflies are equipped with a keen sense of smell and are able to identify food plants from quite a distance. If you use the proper plants, it won't be long before butterflies make your home or golf course, their home. The selection of plants is very important for having a successful butterfly garden. There are flowering plants that provide nectar necessary for adult butterflies. Nectar is a sweet sugary substance produced by flowers. There are also host plants that provide food for the larva or caterpillar. Because

caterpillars are particularly choosy eaters, host plants must be chosen carefully. Most species of butterflies will only lay eggs on one species of plant. So, it is important to choose the proper plants for the butterflies present in your area.

Some of the most common and easiest butterflies to find host plants for in South Florida consist of Giant Swallowtails, Black Swallowtails, Zebras, Julias, Queens, Monarch, the Gulf Fritillary and many Whites and Yellows (Sulphurs). See chart below for species of butterfly and preferred host plants for them.

When designing your garden, be sure to determine the full-grown size of the plants that you are going to use so that you can plant them and don't have to cut off flowers to maintain a feasible height.

Also, try to keep most of the garden in the full sun and preferably out of strong winds (next to fence or hedge). Butterflies prefer large blots of colors and strong accents. Once you start seeing butterflies in your garden, make note of the butterfly and what host plant they are on and watch those plants for the next three or four days. You should see tiny caterpillars emerge

*Please see page 46*

**South Florida Turf Products**



**1-800-432-2214**  
**407-746-0667**

**Distributors for  
Howard Fertilizers**

**QUALITY FERTILIZERS & CHEMICALS  
FOR THE TURF INDUSTRY**

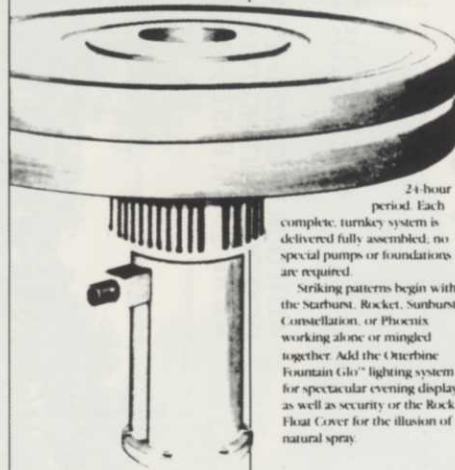
P.O. Box 8081  
Jupiter, Florida 33468

# Troubled waters?

## Otterbine Aerators

The prescription for troubled breathing, poor circulation, and changing temperatures in ponds and lakes is practical engineering that is esthetically pleasing.

These aerators range in power, circulating from 600,000 to 20 million gallons of water in a



24-hour period. Each complete turnkey system is delivered fully assembled, no special pumps or foundations are required.

Striking patterns begin with the Starburst, Rocket, Sunburst, Constellation, or Phoenix working alone or mingled together. Add the Otterbine Fountain Glo™ lighting system for spectacular evening display as well as security or the Rock Float Cover for the illusion of natural spray.

Otterbine Aerators meet the water management needs of golf courses, parks, recreational lakes, office developments, and residential condominiums. Call or write for more information.

**SULLIVAN**  
**ELECTRIC & PUMP, INC.**

(407) 588-5886



# GO AHEAD! Take Your Best Shot.

We've been setting the standards for  
Commercial and Industrial sand for 47 years.

Choose from 80 different grades  
including the finest:

- Greens Mix Sand • White Trap Sand
- Choker Sand
- Dry, Sterilized Top Dressing Sand
- USGA Peagravel

All our sands meet USGA Requirements



*For the best product and customer service, call one of our three Florida locations today.*



Post Office Box 35  
Hwy. 17 & 92 North  
Davenport, FL 33837  
Phone (813) 422-1171  
FAX (813) 422-8610

JACKSONVILLE BRANCH  
600 East 8th Street  
Jacksonville, FL 32206  
(904) 355-0516  
FAX (904) 355-2022

MIAMI BRANCH  
4101 N.W. 70th Avenue  
Miami, FL 33166  
Dade (305) 593-1430  
Broward (305) 524-5322





and

**TORO**®

present...

# Sand Pro<sup>®</sup> 5000 and Sand Pro<sup>®</sup> 2000

Leading the way in professional sand management systems, these hard working, sure footed performers provide the capacity to help you expertly condition your bunkers for the best of play.



# Users Rate Sand Pro® First In Design and Performance.

Succeeding two decades of Sand Pro leadership, Toro brings you not just one but two bunker management systems to choose from. Both carry the solid Sand Pro reputation for built-in reliability and versatility. And both provide an exceptional operator environment for enhanced comfort and performance.

## Most Quiet

For the safety and comfort of your operators and to sustain the pleasant surroundings you've committed to your golfers and neighbors, Toro has kept noise and vibration to the lowest of levels. Thanks to a special Sound Treatment Package of the Vanguard engine, the Sand Pro 5000 boasts a low rating of 82 dB(A), and the 2000 rates ever so close.



## Natural to Operate

Features like ergonomically designed controls, tilt steering, adjustable seating, hydrostatic drive and a zero turning radius lend every operator a skillful performance and added productivity. And of course there's the ease of hydraulic lift for all attachments, plus adjustable down pressure for proper grooming.







## Durably Built, Easy to Service

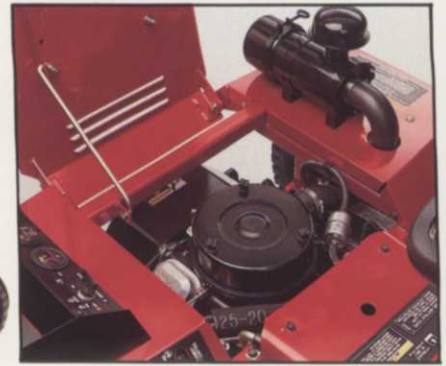
Either Sand Pro provides self-lubricating hydraulic systems that are completely enclosed, protected from sand and grit for longer life. There are no gears to change, belts to adjust, no clutch to slip, so downtime and maintenance is minimized. And both are easy to service. All major components are quickly accessed by removing the side panels.

## The Sand Pro 5000

Powered with a commercial, 16 hp, twin cylinder Vanguard engine; it's fuel efficient, offers more horsepower output, runs cooler and has a fully pressurized oil lubrication system for longer life.

Three-wheel traction drive is standard but 2-wheel drive is an option which affords a choice of two ground speeds; 8.6 mph (and 11 mph with 2-wheel drive.)

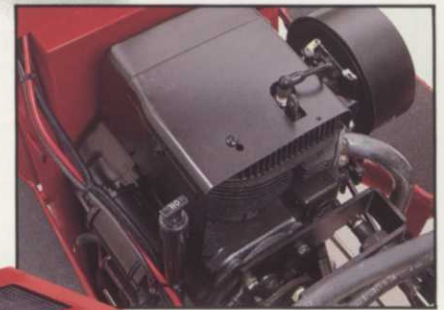
A greater ground clearance of 7.5" allows alternating bunker entries. Combined with the ease of hydraulic lift, attachment transport is hassle-free.



## The Sand Pro 2000 Tried and True

The Sand Pro 2000 gives you the same durability and versatility of the reputed Sand Pro 14. Featuring a 12 hp Kohler engine, it provides plenty of power to maintain a fast work rate, whether raking, edging, spiking or grading. Its transport

speed, infinitely variable from 0 to 11 mph, makes for quick mobility from bunker to bunker.



## Continuous Service and Support

Your local Toro distributor, a group of highly trained, professional people, stand ready to provide you with full service, reliable maintenance and valuable programs like technical training for your operators and Toro's *Direct Today 48-Hour Parts Delivery Program*. Whatever your needs, your Toro distributor wants to help you.

## Sand Pro Attachments

The 5000 and 2000 share a wide array of attachments to satisfy your varied conditions; whether maintaining bunkers or other labor intensive tasks around the golf course. All attachments are interchangeable; even most of your existing Sand Pro attachments will mount either model.



## Tooth Rake, Model 08812

Designed for optimal performance in a variety of conditions. Ideal for maintaining firm bunkers having a tendency to crust. Raking depth is adjustable for achieving the desired bunker playability.



## Spring Rake, Model 08813

Designed for minimal disturbance or shallow bunkers. It provides superior surface grooming and breaks up bunker crust of loose, dry silicate type sands. Spring teeth offer extreme flotability. Consider combining this Spring Rake with the Tooth Rake.



## Weeder/Cultivator, Model 08815

A unique tool that serves a variety of applications. Ideal when used with either the Tooth Rake or Spring Rake for loosening or weeding the sand before raking. It also serves as a sand leveling device to eliminate bumps or washboarding.

## Renovation Cultivator, Model 08818

Ideal for sand bunker renovation, golf course reconstruction, or seed bed preparation. You'll achieve high capacities with a 66" working width and 8 tines. Quick, no-tool individual tine removal accommodates various conditions.



## 40" Dozer Blade, Model 08821

Universally used, it's ideal for bunker renovation after washout, for landscaping or for constructing new greens. The counterbalanced blade with unique flex design lets you shape the ground as you like with minimal effort. A 60" blade is also available for bigger jobs.

## Drag Mat, Model 08845

Breaks up soil clumps and creates a surface ready for seeding.



## 58" Spiker, Model 08856

Covers more turf in fewer passes. It's center pivot combined with Toro's exclusive profile tooth blades spiker cleanly without ruffling turf, so greens are immediately playable. The hydraulic down pressure system allows you to penetrate even in compacted soil.

## Finish Grader, Model 08867

Designed for renovation and construction of turf areas.



## Rake, Model 08811

Traditional rake with 4 floating sections and cultivator bars, adapts nicely to bunkers with high curved lips.

## Edger Kit, Model 08822

Mounts to Rake, Model 08811. Mechanizes edging in flat to slight undulating bunkers.

## Turf Tire, Part No. 119672

Optional Turf Tire makes the Sand Pro even more versatile; recommended for use on greens.

# Sand Pro<sup>®</sup> Specifications\*

	SAND PRO 5000, Model 08881	SAND PRO 2000, Model 08882																
<b>ENGINE</b>	Vanguard <sup>®</sup> , V-twin cylinder, 4 cycle, OHV, air cooled, gas engine with cast iron sleeves. 16 hp (11.9 kW) at 3200 rpm. Displacement: 29.3 cu. in. (480 cc). Oil capacity: 1.75 quart (1.66 liter). Electronic ignition. Full pressure lubrication, oil filter. Base mounted engine and pump with 4 isolation mounts. Standard remote mounted Donaldson 3 phase element air cleaner.	Kohler M12, 4-cycle, synchro-balanced, air cooled, gas engine with cast iron sleeves. 12 hp (8.9 kW) at 3000 rpm. Displacement: 29.07 cu. in. (476 cc). Oil capacity: 5.25 pints (2.5 liters). Electronic ignition. Large capacity, dual element air cleaner. Optional remote mounted Donaldson Air Cleaner, P/N 86-4900.																
<b>FUEL CAPACITY</b>	5.5 gallons (21 liters) of unleaded gasoline.	4.25 gallons (16.1 liters) of unleaded gasoline.																
<b>TRACTION DRIVE/ GROUND SPEED</b>	Direct driven hydrostatic variable displacement piston pump to 3 hydraulic motors for 3-wheel drive. Large, front mounted hydraulic cooler and fan. Foot pedal control, forward/reverse. Infinitely variable 0-8.6 mph (13.8 km/h) forward; 4.3 mph (6.9 km/h) reverse. Optional 2-Speed Valve Kit, P/N 88-8500, for faster transport, up to 11 mph (17.7 km/h).	Direct driven hydrostatic variable speed displacement piston pump to 2 hydraulic motors for 2-wheel drive. Large front mounted hydraulic cooler. Foot pedal control, forward/reverse. Infinitely variable 0-11 mph (17.7 km/h) forward; 2.5 mph (4 km/h) reverse.																
<b>HYDRAULIC OIL CAPACITY</b>	3 gallon (11.4 liter) system capacity. Nylon reservoir to reduce corrosion. 25 micron replaceable cartridge.	2.5 gallon (9.5 liter) system capacity. Nylon reservoir to reduce corrosion. 25 micron replaceable cartridge.																
<b>TIRES/WHEELS/ PRESSURE</b>	Three 22 x 11.00-8 pneumatic tubeless tires on demountable, interchangeable wheels. Tire pressure: 4 psi (27.5 kPa).	Three 21 x 11.00-8 pneumatic tubeless tires on demountable and interchangeable wheels. Tire pressure: 4 psi (27.5 kPa).																
<b>MAIN FRAME</b>	Tricycle vehicle with welded rectangular tubular steel frame construction. Rear engine placement.	Tricycle vehicle with welded tubular steel frame construction. Mid engine placement. Removable refuse box.																
<b>BRAKES</b>	Dynamic braking through the hydrostatic transmission.																	
<b>STEERING</b>	Manual front wheel steering. Adjustable tilt steering wheel (infinite positions). 15" (38 cm) dia. steering wheel. Zero turning radius.	Manual front wheel steering. 15" (38 cm) dia. steering wheel. Zero turning radius.																
<b>CONTROLS/ GAUGES</b>	Hand operated choke, throttle, and hydraulic control for raising/lowering implements. Foot pedal controls traction forward/reverse speed. Gauges: hour meter and ammeter.																	
<b>SEAT</b>	Deluxe seat, one piece molded with 1/2 back support. 5.75" (14.6 cm) fore/aft adjustment with two mounting positions.	One piece molded with 1/4 back support. 5.75" (14.6 cm) fore/aft adjustment with two mounting positions. Optional Deluxe Seat.																
<b>ELECTRICAL FEATURES</b>	12 Volt battery, 32 amp hour, 12 volt electric starter. Console mounted ignition switch with key. Neutral interlock switch. Also provision for light kit.	12 Volt battery, 32 amp hour. 12 volt electric starter. Dash mounted ignition switch with key. Neutral interlock switch.																
<b>SOUND LEVEL</b>	82 dB(A) under normal operating conditions.	83 dB(A) under normal operating conditions.																
<b>WARRANTY</b>	One year limited warranty. Refer to the Sand Pro 5000 Operator's Manual for further details regarding this warranty. Briggs & Stratton provides a two year commercial engine warranty and a lifetime Magnetron <sup>®</sup> warranty.	One year limited warranty. Refer to the Sand Pro 2000 Operator's Manual for further details regarding this warranty. Kohler provides a two year commercial engine warranty.																
<b>DIMENSIONS</b>	<table border="1"> <thead> <tr> <th>Width</th> <th>Length</th> <th>Height</th> <th>Wheelbase</th> </tr> </thead> <tbody> <tr> <td>58" (147 cm)</td> <td>63" (160 cm)</td> <td>45.25" (115 cm)</td> <td>42.75" (108 cm)</td> </tr> </tbody> </table>	Width	Length	Height	Wheelbase	58" (147 cm)	63" (160 cm)	45.25" (115 cm)	42.75" (108 cm)	<table border="1"> <thead> <tr> <th>Width</th> <th>Length</th> <th>Height</th> <th>Wheelbase</th> </tr> </thead> <tbody> <tr> <td>58" (147 cm)</td> <td>60" (152 cm)</td> <td>44" (112 cm)</td> <td>40" (102 cm)</td> </tr> </tbody> </table>	Width	Length	Height	Wheelbase	58" (147 cm)	60" (152 cm)	44" (112 cm)	40" (102 cm)
Width	Length	Height	Wheelbase															
58" (147 cm)	63" (160 cm)	45.25" (115 cm)	42.75" (108 cm)															
Width	Length	Height	Wheelbase															
58" (147 cm)	60" (152 cm)	44" (112 cm)	40" (102 cm)															
<b>WEIGHT</b>	Net weight (full fluids): 807 lbs. (366 kg)	Net weight (full fluids): 685 lbs. (311 kg)																

# Sand Pro® Specifications\* (continued)

SAND PRO ATTACHMENTS & ACCESSORIES	
<b>TOOTH RAKE, 08812</b>	72" (183 cm) width, with 3 rake sections, 27 prongs adjustable for depth and wear. Adjustable trowels, drawbar position for variable aggressiveness. Hydraulically raised for transport. Weights available for drag sections.
<b>SPRING RAKE, 08813</b>	76" (193 cm) width, with 5 individual rake heads. Hydraulically raised for transport.
<b>WEEDER/ CULTIVATOR, 08815</b>	38" (97 cm) width, with 5 sets of double shovels. Mounted close to rear wheels for improved ground following and reduced gouging. Hydraulically lowered, spring raised. Operates independently of Tooth Rake and Spring Rake.
<b>RENOVATION CULTIVATOR 08818</b>	66" (168 cm) width with 8 shovel blades. Shovel assemblies are removable without tools. 0-4" (0-10 cm) depth adjustment. Rear mounted, hydraulically operated.
<b>DOZER BLADE, 08821</b>	40" (102 cm) width, reversible blade. Loop handle for blade control with either hand. Transport lock-up with handle storage position. Side-to-side flex design for improved ground following. Optional 60" (152 cm) Blade also available.
<b>DRAG MAT, 08845</b>	6-1/2' x 6' (1.9 m x 1.8 m) Keystone drag mat with transport stands. Used in conjunction with Hitch Kit to drag greens and tees.
<b>EDGER KIT, 08822</b>	16" (41 cm) disk attached to arm to be mounted on Rake (08811 only). Hydraulically operated.
<b>SPIKER, 08856</b>	<p><b>Description:</b> Spiker consists of 2 units each with 12 spiker blades and 11 hold down fingers. Each unit floats independently of the other and is hydraulically pressured into the ground and allowed to float up and down by means of a spring.</p> <p><b>Blade:</b> High carbon steel, .015" (.26 cm) thick. Special profile design for minimum disturbance of soil surface when spiking, (7) 3/4" (1.9 cm), 8 points per blade.</p> <p><b>Specifications:</b></p> <p style="margin-left: 40px;">Weight: 280 lbs. (127 kg)                      Unit Working Width: 57.6" (146 cm)                      Working Depth: 1.25" (3.2 cm), max.                      Working lbs./Blade: 23.1 lbs. (10.5 kg)/blade                      Blade Spacing: 2.4" (6.1 cm)</p>
<b>TURF TIRE, 119672</b>	22 x 11.00-12. Tire pressure: 4 psi (27.5 kPa).
<b>RAKE, 08811</b>	Formed forward conditioning sections utilizing subsurface bar for breaking crust. Nine drag sections. Angle of conditioning bar adjustable for depth of penetration. Weights available for drag sections.
<b>FINISH GRADER, 08867</b>	<p>Consists of box plow and scarifier. Adept at light ground maintenance and grooming. Hydraulically raised and lowered, with spring loading to regulate down pressure.</p> <p><b>Dimensions:</b></p> <p style="margin-left: 40px;">Weight: 200 lbs. (91 kg)                      Length: 10" (25 cm)                      Width: 66" (168 cm)                      Height: 10" (25 cm)</p>

SAND PRO ATTACHMENT & ACCESSORY MATRIX																
	Tooth Rake 08812	Spring Rake 08813	Weeder/ Cultivator 08815	Renovation Cultivator 08818	40" Dozer Blade 08821	Rake 08811	Drag Mat 08845	Spiker 08856	Finish Grader 08867	Sand Blade 240 44900	Deluxe Seat 76-1401	Remote Air Cleaner 86-4900	2-Speed Valve Kit 88-8500	Turf Tire Kit 119672	Draw Bar 92-2330	
Sand Pro 5000, 08881	Opt.	Opt.	Opt.	Opt.	Opt.	Opt.	Opt.	Opt.	Opt.	Opt.**	Std.	—	Opt.	Opt.	Opt.	
Sand Pro 2000, 08882	Opt.	Opt.	Opt.	Opt.	Opt.	Opt.	Opt.	Opt.	Opt.	Opt.	Opt.	Opt.	—	Opt.	Opt.	
Rake Mount Kit, 08814	Req.	Req.	Req.	—	—	—	—	—	—	—	—	—	—	—	—	
60" Blade, 92-3093	—	—	—	—	Opt.	—	—	—	—	—	—	—	—	—	—	
Adapter Kit**, 44901 (Required to mount blade on Sand Pro 5000, Model 08881)	—	—	—	—	—	—	—	—	—	Req.	—	—	—	—	—	
Scarifier Bar (43 fingers), 23-2750	—	—	—	—	—	—	—	—	Opt.	—	—	—	—	—	—	
Prong Rake Kit, 42-3960	—	—	—	—	—	Opt.	—	—	—	—	—	—	—	—	—	
Drag Weight, 18-7570	Opt.	—	—	—	—	Opt.	—	—	—	—	—	—	—	—	—	
Edger Kit, 08822	—	—	—	—	—	Opt.	—	—	—	—	—	—	—	—	—	

\*Specifications and design subject to change without notice. "Toro" and "Sand Pro" are registered trademarks of The Toro Company, 8111 Lyndale Avenue South, Minneapolis, Minnesota 55420-1196. "Vanguard" and "Magnetron" are registered trademarks of the Briggs & Stratton Corporation. Products depicted in this advertisement are for demonstration purposes only. Actual products offered for sale may vary in use, design, required attachments and safety features. Consult your local distributor.

Commercial Products



*Helping you put quality into play.™*

# Florida Native Wildflowers to Provide Nectar

## Perennials

milkweeds (*Asclepias* spp.)  
 asters (*Aster* spp.)  
 Blazing star (*Liatris* spp.)  
 Boneset (*Eupatorium* spp.)  
 False ageratum (*E. coelestinum*)  
 Goldenrod (*Solidago* spp.)  
 Ironweed (*Vernonia* spp.)  
 Florida Paintbrush (*Carphephorus corymbosus*)  
 Pennyroyal (*Piloblephis rigida*)  
 Purple coneflower (*Echinacea purpurea*)  
 Stoke's aster (*Stokesia laevis*)  
 Vervain (*Glandularia* spp.)  
 Wild petunia (*Ruellia caroliniensis*)

## Annuals

Spanish needles, or beggars ticks (*Bidens alba*)  
 Seaside heliotrope (*Heliotropium curassavicum*)  
 beach sunflower (*Helianthus debilis*)

## Biennials

Black-eyed susan (*Rudbeckia hirta*)  
 Thistle (*Cirsium horridulum*)

## Shrubs

flatwoods plum (*Prunus umbellata*)  
 sparkleberry (*Vaccinium arboreum*)  
 Blue porterweed (*Stachytarpheta* spp.)  
 Firebush (*Hamelia patens*)  
 Garberia (*Garberia fruticosa*)  
 Lantana (*Lantana* spp.)  
 Wild sage (*L. involucrata*)  
 New Jersey tea (*Ceanothus americanus*)  
 Tarflower (*Befaria racemosa*)

## Florida Larval Plants

Asters (*Aster* spp.)  
 Cannas (*Canna* spp.)  
 Carrot family (*Umbelliferae*)  
 Citrus family (*Rutaceae*)  
 Coontie (*Zamia floridana*)  
 Dutchman's Pipe (*Aristolchia* spp.)  
 Figs (*Ficus* spp.)

Laurel family (*Lauraceae*)  
 Legume family (*Fabaceae*)  
 Milkweed family (*Asclepiadaceae*)  
 Mustard family (*Brassicaceae*)  
 Passionvine (*Passiflora* spp.)  
 Pawpaw (*Asimina* spp.)  
 Senna & Partridge Pea (*Cassia* spp.)  
 Water hyssop (*Bacopa* spp.)

*This is a partial listing of native plants found throughout Florida that attract butterflies. For more specific information regarding your region, call your county extension office or the Florida Native Plant Society, (407) 299-1472.*

## TERRA

### Positioned to Meet Industry Needs

Professional Turf ♦ Horticulture  
 Vegetation Management ♦ Pest Control

No matter what business you're in, we get the products to you when and where you need them. And that leaves you with more time to do what you do best—run your business.

Think of Terra as your business partner. Our goal is to supply you with a complete line of chemical, fertilizer and seed products that is supported by the best technical advice available in the industry today.

The Terra product line includes pesticides and adjuvants from all of the major manufacturers, plus our own quality Riverside brand. Fertilizers and seeds are supplied by the best producers in the industry.

*Complete soil and plant tissue analyses and fertility recommendations are also available.*



Call your nearest Terra location today!



Since 1978

# ARBOR TREE & LANDSCAPE Co., Inc.

What to look for in a tree company

- 15 years working on golf courses
- Certified Arborist staff
- The same faces, year after year
- Million dollars in truck and equipment
- Able to work around rain days
- Talk to a person not a machine
- Right tool for the right job

**Service • Communication • Care**

WPF 407-965-2198

So FL 1-800-932-7267

## Chart 1: Florida Butterflies

Name	Characteristics	Food Sources	Florida Location
<b>SWALLOWTAILS</b> 10 Florida species			
Zebra Swallowtail	Long winged, white w/dark stripes & red spot on lower hind wings	pawpaws	All
Black Swallowtail	Small, dark rows of yellow spots, iridescent blue spots on hind wings	carrot family	All
Giant Swallowtail	Large, black & yellow	citrus family	All
Pipevine Swallowtail	Medium, dark w/iridescent blue on hind wings	various species of Dutchman's pipe	Common north of Fort Myers
Spicebush Swallowtail	Large, dark, row of yellow spots on wings, orange spot on upper edge of hind wing	laurel family, including spicebush	All
<b>SULFURS AND WHITES</b> 19 Florida Species			
Checkered White	Medium, white, checkered w/brown markings	mustard spp. including peppergrass	All
Cloudless Sulfur	Large, yellow	cassia spp.	All
Great Southern White	Large, white, dark markings on tips of fore wings	salt tolerant mustards	Coastal Peninsular Florida
Little Sulfur	Small, bright yellow, brown markings on fore wings	cassia spp.	All
Sleepy Orange	Rich-orange, dark brown bands	cassia spp.	All
<b>HAIRSTREAKS AND BLUES</b>			
Atala	Rare, once thought extinct, blue w/dark wing edges & bright orange abdomen	coontie	Extreme South
Gray Hairstreak	Small, dull gray, orange spots on lower hind wings	oaks, hawthorns, mainly pea & mallow spp.	All
Red-banded Hairstreak	Tiny, dark gray fore wings & blue markings on hind wings	wax myrtle & oaks	All
Spring Azure	Tiny, blue	woody trees & shrubs	North Florida south to Gainesville
White Hairstreak	Blue, black wing border, white M marking on hind wing	various oaks	All
<b>METALMARKS</b> 1 Florida Species			
Little Metalmark	Small, copper-colored	thistles	All
<b>SNOUT BUTTERFLIES</b> 1 Florida Species			
Snout Butterfly	Long pointed noses, orange & brown w/white spots on upper wing tips	sugarberry, other hackberry trees	All

### From page 42

from eggs. These caterpillars will feed on your plant and can sometimes destroy it quickly, so observe them daily. Remove the overload and replace them, either on other plants of the same species or give some to a friend. Most elementary schools would love to have them so students can observe the caterpillars change to *chrysalis* or pupa stage and then to a beautiful butterfly.

#### More butter fly garden tips:

- ◆ Plant with year round blooms in mind and in sunny, warm

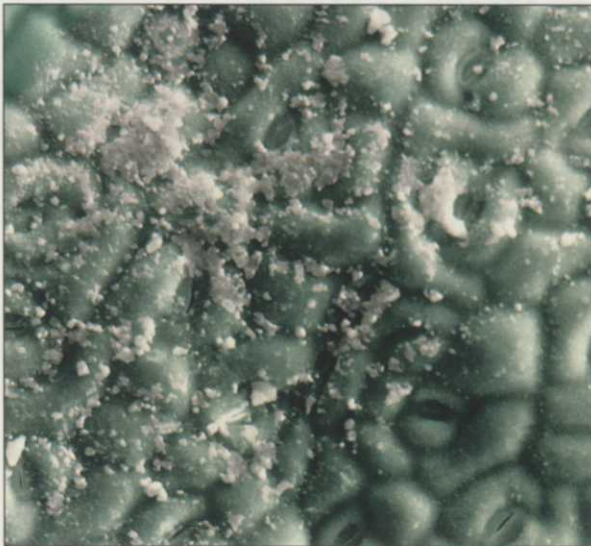
locations.

- ◆ Butterflies are cold blooded, and can fly only when their body temperatures are between 85 - 100 degrees Fahrenheit. Try placing rocks in open sunny areas of your garden as "basking" sites.

- ◆ Butterflies, like all wildlife, depend on food, water and cover. Understanding their habitat needs is necessary for a successful garden.

- ◆ At least one and preferably more watering areas should be

*Please see page 48*



Daconil 2787® fungicide after a 4" rain stress (SEM - 2700x)†

**DACONIL 2787  
STICKS AND STAYS.**



Best-performing imitator\* after a 4" rain stress (SEM - 2700x)†

**THE COMPETITION  
CAN WASH AWAY.**

## WHICH ONE WILL GIVE YOUR COURSE THE FUNGAL PROTECTION IT NEEDS?

From mowing and watering to Mother Nature's rain, your course goes through a lot week in and week out. And because of all it goes through, you need a fungicide you can count on to stick and stay for maximum protection against fungal diseases that can so quickly destroy valuable turf and ornamental plants. That's why your choice should be Daconil 2787.®

Scanning electron microscopy of treated plant samples lets you see why for yourself. Just compare Daconil 2787, with its exclusive Weather Stik™ formulation, to one of its imitators, and you can see how much better and more evenly Daconil 2787 sticks and stays, even after the equivalent of a four inch rain.

That means you can count on Daconil 2787 even when it's wet and disease pressure is at its highest for continued, broad-spectrum, multi-site control of major turf diseases. Diseases like Leaf spot, Melting out, Brown patch, Dollar spot, Anthracnose, Rust, Red thread, and Snow mold on both warm and cool season grasses including Bentgrass tees, greens, and fairways. Plus control of ornamental plant diseases and algal scum, too.

In addition, Daconil 2787 also makes the perfect tank-mix contact fungicide for broad-spectrum support of your systemics and for disease resistance management. Remember, there's never been a documented case of disease

resistance to Daconil 2787 in over 25 years — that's one more good reason to make it the most important component in your turf management program.

With all you have to worry about, why worry about your fungicide? Just stick with Daconil 2787. You can count on it to stick with you.

**ISK Biosciences Corporation,  
Turf & Specialty Products  
Division, 5966 Heisley Road,  
P.O. Box 8000,  
Mentor, Ohio  
44061-8000.**



Always follow label directions carefully when using turf and ornamentals plant protection products.

® Registered trademark of ISK Biosciences Corporation. ™ Trademark of ISK Biosciences Corporation.

\* Evade. Based on: Evade was the best-performing imitator from the 1993 University of Georgia Wash-off Field Trials. Evade is a trademark of Platte Chemical Company. † Micrographs have been colorized for demonstration purposes.

## Chart 2: Florida Butterflies

Name	Characteristics	Food Sources	Florida Location
<b>BRUSHFOOTED BUTTERFLIES</b> 23 Florida Species			
American Painted Lady	Medium, orange w/brown, white & blue markings abundant in spring & fall	aster family	All
Buckeye	Medium brown w/purple eyespots on wings	plantains, matchheads, false foxglove & wild petunia	All
Gulf Fritillary	Bright orange w/black & silver spots	passion vines	All
Julia	orange-brown, likes edge of woodlands	passion vines	South Florida
Ruddy Daggerwing	rich orange w/thin brown lines, long thin tails, likes woodland edges	various figs	South Florida
White Peacock	medium, orange brown, dark spots & wavy lines on wings, likes moist areas	water hyssop, occasionally wild petunia	Florida Peninsula
Zebra Longwing	Black w/bold yellow stripes, likes edge of wooded areas	passion vines	All
<b>GOATWEED BUTTERFLIES</b> 4 Florida Species			
Florida Leafwing	Rare, medium orange-brown, mostly forest dwellers	hackberry trees	Miami area south through the Keys
Hackberry Butterfly	Medium, orange brown	hackberry trees	All
<b>NYPHHS AND SATYRS</b> 8 Florida species			
	small to medium, shades of brown, likes woodlands and edges	various grasses	all
<b>MONARCH BUTTERFLIES</b> 3 Florida Species			
Monarch	Boldly marked, orange & black, usually near coast, toxin absorbed from milkweed plants protects from predators	exotic scarlet milkweed & native milkweed vine	All
Queen	Chestnut orange w/dark margin around wings & small white spots	milkweed	All
Tropic Queen	Orange 2/black markings	milkweed	All
<b>GIANT SKIPPERS</b> 2 Florida Species			
	Large, moth like, dark brown w/gold markings	yucca spp.	
<b>SKIPPERS</b> 65 Florida Species			
Long-tailed Skipper	Medium, brown, w/long green tails	variety of legumes, including green beans	All

### From page 46

included in your garden. Try a clay pot saucer with sand added and a rock in the middle, or create a depression in and around your garden and either keep water in it or let rain replenish it.

◆ Don't place your garden in an area difficult to get to or to see. Try a garden around the clubhouse, pro shop or practice putting green.

◆ Eliminate all chemical applications in garden area.

For more information on butterfly gardening, contact The Xerces Society  
10 Southwest Ash Street

Portland, Oregon 97204

North American Butterfly Assoc.  
39 Highland Avenue  
Chappaqua, NY 10514

You can also contact your local county extension agent for information on butterflies in your area.

If you're in Coconut Creek and have the time, stop by **Butterfly World** for an up-close look. West Sample Road, (305) 977-4400.





# Your Sand Man

Choker Sand • Greens Mix Sand • Pea Rock

White Trap Sand • Dolomite • Hi-Cal

Dry Sterilized Top Dressing Sand

**All Sands meet U.S.G.A. Specs**

**E. R. JAHNA INDUSTRIES, Inc.**

Lake Wales, FL 33859-0840 • (813) 676-9431



## SERVICES

DESIGN, SALES, INSTALLATION AND SERVICE OF ALL TYPES OF GOLF COURSE AND COMMERCIAL IRRIGATION PUMP SYSTEMS.

FULLY STOCKED WAREHOUSE WITH SPECIFIC EQUIPMENT TO MEET YOUR IRRIGATION NEEDS.

FULLY EQUIPPED, RADIO DISPATCHED TRUCKS PROVIDE 24 HOUR EMERGENCY SERVICE.

COMPLETE CRANE SERVICE.

INHOUSE PUMP REPAIR FACILITY.

MOTOR REPAIR AND REWIND FACILITY.

PREVENTATIVE MAINTENANCE PROGRAMS.

TOTAL LIGHTNING PROTECTION AND INTERFACE SYSTEMS. ULLISTED INSTALLER.

UNDER WATER WETWELL AND INTAKE CLEANING AND REPAIR.

LICENSED & INSURED ELECTRICAL CONTRACTORS.

## PRODUCTS

• SYNCROFLO IRRIGATION PUMPING SYSTEMS

• OTTERBINE AERATORS.

• EPS LANDSCAPE PUMP STATIONS.

• EPS HYDRAULIC PUMP STATIONS.

• WESCO FOUNTAINS.

• CLAYTON VALVES & PARTS.

• WESSELS HYDROPNEUMATIC TANKS.

• SELF CLEANING INTAKE SCREENS.

• THOMPSON LIGHTNING PROTECTION EQUIPMENT.

• VERTICAL TURBINE PUMPS.

• CENTRIFUGAL PUMPS.

• REPLACEMENT MOTORS.

• CUSTOM CONTROL PANELS, ETL LISTED

*"Servicing South Florida"*

# Managing Endangered and Threatened Species

'We protect the scrub jay by protecting their habitat. They prefer isolated sandy areas with low vegetation, preferably scrub oak and saw palmettos, which is the primary vegetation of John's Island West.'



Photo by The Nature Conservancy

Curious scrub jays will often land on carts and check out the golfers.

BY GREG PHENEGER  
GOLF COURSE MANAGER  
JOHN'S ISLAND WEST

The West Golf Course at John's Island Club is maintained in a very natural state. While this plays havoc with errant golf shots, it is a haven for wildlife.

The course was built on a natural sand dune with the holes on the eastern boundary running along a wetland area. The vegetation includes but is not limited to live oaks, scrub oaks, sand pines, slash pines, hickory, sabal palms and saw palmettos. At one time, paths were cut