



CHIPCO® 26019
HAS BEEN
CONTROLLING
DISEASES
FOR A LONG TIME,
FOR A LONG TIME.

Years of excellent, long-lasting performance have made CHIPCO® 26019 fungicide the leader in its field.

When it's your business to keep turf healthy and handsome, you don't wait for disease to break out. You strike first and play for keeps.

That's why thousands of superintendents base their disease control programs on CHIPCO 26019 fungicide.

It's unsurpassed at controlling the major turf diseases, like Helminthosporium Leaf Spot and Melting Out, Dollar Spot, Brown Patch, Fusarium Blight, Red Thread, Fusarium Patch and Gray and Pink Snow Molds.

And it stays on the job longer, giving up to 28 days of protection for a lower cost per day.

Add a few extras — no phytotoxicity, low toxicity, pesticide compatibility, and no corrosiveness — and you've got a fungicide that's earned its place as the standard of the industry.

Use CHIPCO 26019 this season and you'll stay with it for a long time to come.

Rhône-Poulenc Inc., Agrochemical Division, Monmouth Junction, NJ 08852. 

CHIPCO
26019
Taking care of business.



How to grow a golf course where you're lucky to

Anyone who's tried knows that sustaining thick, healthy turfgrass in the state of Florida can be a real struggle.

The problem, of course, is in the soil. Or, more accurately, what's not in the soil.

Because, at best, most Florida soils do a lousy job of retaining the nutrients grasses need to thrive.



To make up for this deficiency, there's the new Grace Professional Turf Nutrition Program.

Maintaining growth takes more than just the right fertilizer.

Whether you're looking to improve the maintenance of your existing course, or setting out to build a new one, call us. But don't expect us just to send you a load of fertilizer.

What we will send you is someone who understands the complexities of Florida soils and knows how to deal with them.

Someone who understands the difficulties of nurturing the different varieties of turfgrasses.

Someone with experience to develop a professional turf nutrition program suited precisely to your course.

Fifty years of custom blending.

If the solution calls for custom-blended formulations, we can supply them. In fact, Grace has been custom blending fertilizers for Florida soils for over fifty years.

But, chances are, we'll already have the formulations you need. From one of three standard Grace For Greens fertilizers, to the hundreds of Grace For Fairways blends.

It's a balanced line of nutrition products

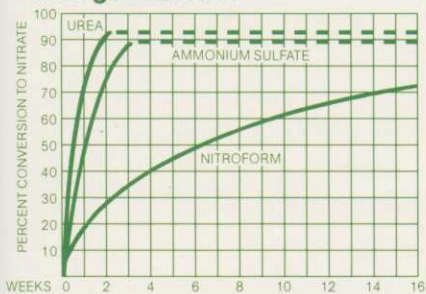




f course in a place grow anything at all.

developed specially for Florida golf courses.

Nitrogen Release



And, thanks to an ingredient called Nitroform,[®] it's not only balanced, it's efficient.

Using nature's own slow-release process.

Nitroform is an organic fertilizer containing 38% nitrogen. But less than one-third of this nitrogen is released through hydrolysis. Instead, it's released to growing plants through a slow and natural conversion by bacteria living in the soil.

And, since it's less

affected by water, Nitroform resists leaching, even during periods of heavy rainfall. So it stays in the soil, feeding your turf at safe, predictable rates throughout the growing season. Without early flushes. And without fears of burning.

So if you want to grow, let alone maintain, a golf course in soils like these, get the fertilizers made for soils like these. The Grace Professional Turf Nutrition Program.

Call us, toll free, at 1-800-432-6977. Or write W.R. Grace & Co., PO Box 1210, Fort Pierce, Florida 33454.

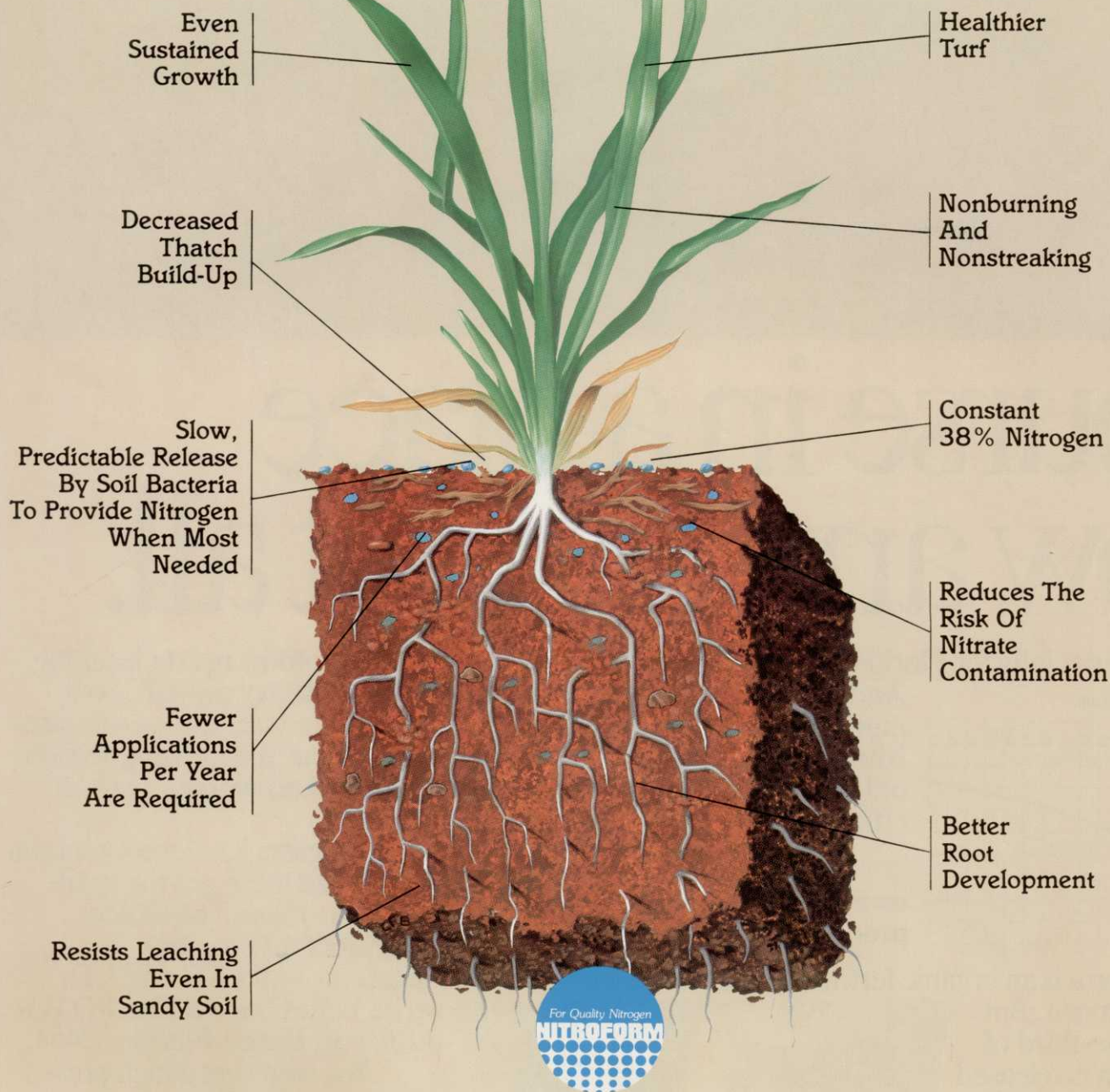
You won't get a high pressure sales pitch. Just a better way to grow.



GRACE

Not just the right fertilizers. The right people.

Don't Simply Fertilize Your Turf...Nourish It With Quality Nitroform[®] Nitrogen



Always look for the NITROFORM[®] logo
It's your assurance of a high quality Nitrogen

 **NOR-AM**
NOR-AM CHEMICAL COMPANY

3509 Silverside Road, P.O. Box 7495, Wilmington, DE 19803



Harbour Town Golf Links, Sea Pines Plantation, 18th hole (458 yards — par 4)

The real star of this tournament was the turf.



It was overseeded with **MARVELGREEN®!**

The game was great. But the turf was sensational! Because Steve McCloud, Golf Course Superintendent of Harbour Town Golf Links, Sea Pines Plantation, overseeded with a Marvelgreen blend.

Marvelgreen was chosen at this Hilton Head resort for several reasons: it germinates quickly to provide an early cover of fine-leaved, dense, fairway turf. And on the greens, Marvelgreen promises

a smooth, grain-free putting surface. It looks great throughout the winter season, and provides an easy spring transition.

Marvelgreen blends contain just the right amount of the leading turf-type ryegrass varieties: Palmer, Prelude and Yorktown II. Marvelgreen is used at some of the most prestigious courses in the country. And it performs long after the game is over.



Lofts Inc.

Bound Brook, NJ 08805
(201) 356-8700 • (800) 526-3890

Watson Distributing Company
Houston (713) 771-5771 Dallas (214) 438-3733 San Antonio (512) 654-7065

Lofts/Maryland
Beltsville, MD 20705
(301) 937-9292

Sunbelt Seeds, Inc.
Norcross, GA
(800) 522-7333 • (404) 448-9932

OUR NAME AND THE BEST KNOWN NAMES IN TURF EQUIPMENT TOGETHER SINCE 1932

Distributors for:
Toro Mowers & Turf Equipment
Toro Turf Irrigation
Toro String Trimmers
Power King Tractors
Cushman Turf Care System
Ryan Turf Care Equipment
Mitsubishi Tractors

HMC String Trimmers
Power Trim Edgers
Lely Spreaders
Standard Golf Supplies
Florida Turf Sprayers
Broyhill Sprayers
Olathe Turf Equipment

ZAUN EQUIPMENT, INC.

Jacksonville
1741 Hamilton St. 32210
(904) 387-0516

Orlando
11405 Rio Grande Avenue 32085
(305) 841-8460



DICK BESSIRE ED HAITHCOCK
WILL CORDER DARRYL REJKO
SUNNY SMITH

1-800-432-2214 305-746-0667

**Distributors for
Howard Fertilizers**
**QUALITY FERTILIZERS & CHEMICALS
FOR THE TURF INDUSTRY**

P.O. Box 8081
Jupiter, Florida 33468

Estech Branded Fertilizers, Inc. Adds To Woodace® Line

Woodace®, the revolutionary long-lasting briquette fertilizer for commercial growers and landscape contractors, now is just one of the several products in a new, complete line of slow-release fertilizers from Estech. The complete line features IBDU® and Escote™ as long-lasting nitrogen sources.

Rick Helpingstine, product manager for Woodace, said that initial reaction to Woodace briquettes has been excellent and many commercial growers throughout the United States are using them. Many others are testing them. Since Woodace briquettes have a minimum release period of 18 months in container growing, they offer substantial labor savings to the grower and provide excellent growth and color to the plant material.

The Woodace briquette is a 14-3-3 analysis with micronutrients. Estech says one application of the 16-gram briquette will last up to three years in the soil and 18 months in containers. A second, smaller briquette weighs six grams and will last up to one and one-half years in the soil and 8-9 months in containers.

Because of the matrix that holds the briquette together, an entire complement of micronutrients is slowly released along with the N, P and K, making it a complete nutritional product.

Added to the line is Woodace 18-5-10 Top Dress Nursery Fertilizer containing IBDU. In the 18-5-10 granular product, 14.4% of the nitrogen is water insoluble. This product is excellent for woody ornamentals and greenhouse crops offering up to 3-4 months of fertility with all minor elements included, said Helpingstine.

Another new product in the line is Woodace 21-4-10 nursery fertilizer containing Escote. Escote is a unique patented process in which the primary nitrogen source is plastic coated to allow a precise release of nutrients. The amount of release agent incorporated into the coating determines the rate of nutrient release and longevity of the feeding. "This product is very predictable, even in high temperatures or with excessive amounts of moisture. Woodace 21-4-10 also includes a full complement of micronutrients, as do all our products," said Helpingstine.

Excellent results in all parts of the country are being achieved when growing woody ornamentals and tender foliage for up to 6-7 months from one feeding.

Estech's Director of Specialty Products, Irv Stacy, added that the new products expand the Woodace product line so that "we offer a complete fertility program for all types of growers. Our Woodace product line is based on two principles: safety from burning and slow-release nitrogen sources that require fewer applications."

Woodace products are marketed throughout the United States through distributors catering to the nursery and greenhouse grower trade. ■



Palm Beach Trade Winds



By Mike Bailey
The Falls Country Club

Need Help? Call The Doctor!

How often have you made a statement about something and then had your superiors express their doubt about your competency on the subject? Just because we are golf course superintendents we are not automatically to be considered experts in every area of golf course management, but we are responsible for knowing where to get the expert to advise us on the best possible way to solve any problems in our area of management. Because we are second guessed by so many armchair-quarterbacks it often may appear as if "everyone" doubts our management practices!

Sometimes it seems that the only way for us to build our credibility is to get that second opinion. My attitude has been that when I need help to confirm my programs I call for help — "I call the doctor". Namely this person would be a specialist within a specific field and one who is generally considered to be an expert. This person consults with me to determine if I am correct or incorrect in my statements. Yes, I do believe that consultants are a must within our industry where the fine line of science can be so greatly altered from day to day.

During my seven years as the golf course superintendent at Boca Greens Country Club I was unfortunante to experience several occurences during my tenure that could easily have persuaded me to want to pursue another career. If it had not been for certain consultants, who I also regard as my friends, I would have moved on. It was my personal desire and choice to be able to help build a golf course, grow it in, maintain it for a developer, convert it to the membership and do a good enough all around job to retain the position of superintendent after the conversion, and to ultimately have a very stable private country club, after all was said and done.

I must thank at least the following specialists within their own field who I called upon to help:

Joseph Lee: The golf course architect who saw to it that the golf course is built in the proper fashion, assuring the developer of this fact.

Vernon Lowell & Bill Roach: Consultants hired by the developer (Development Corporation of America) to advise on the formation of the club, the by-laws and the general designs of such.

Dr. Max Brown: Hired by the membership to help advise on the conversion of the club. His review of the golf course, examination of general maintenance practices, equipment and shop reviews put the members at ease in regards to exactly what type of club they were purchasing. Dr. Brown was also involved with various on-going problems throughout the years such as the herbicidal contamination of the lakewaters, (which will be discussed later).

Sam Kruger: A hired consultant by Development Corporation of America during the early stages of construction and irrigation installation to oversee the time frame for scheduling. This put the developer at ease to realize that all was going well and on line.

Mr. Lynn Griffith & A&L Laboratories: Were involved for nearly the entire duration in regards to laboratory testing. Mr. Griffith advised on issues concering nutritional levels, diseases, various cultural practices and most importantly, recognizing, identifying and suggesting remedies for excessive herbicidal contaminations found within our lake water supply.

Mr. Tom Stone & Brookside Laboratories: Were also involved with the review of lake water contamination.

Mr. Bill Irey & Dupont Chemical Company: Were valuable in regards to analyzing the generic chemicals associated with the vaxious that were found within the lake water supply.

EPA (Environmental Protection Agency): Handled the investigation of chemicals found within the lake water supply. This valuable data concluded that over \$40,000. worth of trees had died because of the misuse of herbicidal chemicals, which showed that the golf course suprintendent was innocent of any such misuse.

Mr. Scott Wanzor & The Monsanto Chemical Company: Addressed the project managers previous speculation, that trees were dying because the golf course superintendent was incorrectly applying Round-Up at the base of trees. Ironically, various trees were dying because of another source, not because of the Round-Up applications.

Mr. Todd Himelburger: Was instrumental in advising and setting up an aquatic spray program which allowed
(continued on page 18)

(continued from page 17)

the country club to set up their own spraying program with my aquatic license.

Mr. Elray Timmer of Florida Aquatics: Was able to speculate on various chemicals and their usages in regards to the aquatic program.

Mr. Mike Bodle, South Florida Water Management District: Was beneficial in the setting up of aquatic spraying permits, chemical usage and reports filed to the bureau.

Mr. Joe Konwenski: A turf consultant reviewed contaminations found within the greens.

Mr. Dubble of Texas A&M: A turf breeder specialist, was employed for the examination and the keying out of various speculated contaminations that were scientifically concluded to be found within the greens, which eliminated the previous accusations that the golf course superintendent was responsible because of planting errors.

Dr. Phillip Bussey of IFAS: A turf breeder who reviewed the problems of contaminations found within the greens, an on going review for the past two years has concluded the new greens to have been replanted with pure material, showing no signs of contaminations, they still look good.

Dr. G.C. Horn: Was hired to review the greens and the contamination problems because of his vast experience and university work in this area.

Mr. Ralph White: Was also instrumental in the evaluation of greens material and gave suggestions for curing the problems along with **Dr. Tim Boyer.**

Dr. Jim Reinert: Was instrumental in the extensive research work that has been performed on the property for the eradication of mole crickets.

Dr. Bill Howard & Jim Castner: Have performed various biological control projects for mole cricket control with work still on going.

Dr. Max Scowyers of Mobay Chemical Company: Has performed many experimental products along with chemical performance tests that have proved to be instrumental in the labeling of Nematicure 3 for turf along with analyzing the synergistic effects of Oftanol combinations with Nematicure.

Mr. Mike Cook: Has performed various chemical tests also, in regards to mole cricket control.

USGA, United States Golf Association: Under the representation of **Mr. Bud White, Steve Batten and John Foy** has been most beneficial in communicating with the membership in regards to golf course conditions, maintenance practices, cultural practices, reviewing of the greens contamination, suggestions for projects and the examination of the golf course in regards to the membership conversion take over from the previously developer owned country club.

Most importantly, but not last, has been the fellow golf course superintendents within the industry who have so graciously given their time to help advise and consult with

me their valuable advice so I could then put it all into the proper perspective. These are the people who genuinely understand my my problems and give me the moral support that is so necessary. It is a sad fact that the golf course superintendent generally does not command the respect from the golfing public for being the true specialist that he is. But then we must always be aware that "the armchair quarterbacks" will be out there on your course telling you exactly what you did wrong yesterday. My brother David has probably advised me the best, "remember you do not own the deed to the land, so therefore do only what is best for you and the course - do not take complaints as personal comments."

A fellow superintendent brought to my attention a fact of the business world that I guess I really never had thought about before. Large corporations hire teams of consultants to advise the heads of companys on nearly every facet of the business. Literally thousands upon thousands of dollars are spent in acquiring second opinions. Often a second and third team of consultants are hired to confirm the facts given by the first. A chairman of the board never wants to make a wrong decision. They need facts to fall back on if something goes wrong. That is simply good sound business. So why should we be so offended if a consultant comes in to confirm your thoughts and projects. I have found enough good specialists within our industry, who are truly doctors, so when I have a problem, I never hesitate to give them a call. They have come through for me time and time again and I will continue to need their advice until the day I retire. I believe anyone who is qualified to give a second opinion regarding the first individuals opinion is in essence a consultant. In other words, when I need help — I call the doctor. ■

Sunniland

Don't Simply Fertilize Your Turf... Nourish It With Quality Nitroform Nitrogen

- Even Sustained Growth
- Decreased Thatch Build-Up
- Slow, Predictable Release By Soil Bacteria To Provide Nitrogen When Most Needed
- Fewer Applications Per Year Are Required
- Resists Leaching Even In Sandy Soil
- Healthier Turf
- Nonburning And Nonstreaking
- Constant 38% Nitrogen
- Reduces The Risk Of Nitrate Contamination
- Better Root Development
- Better Water Utilization

Turf Gro Fertilizers, Pesticides
Custom Application, Forklift Delivery

Sunniland

SUNNILAND CORPORATION
P.O. BOX 1697, SANFORD, FL 32772-1697
TOLL FREE 1-800-432-1130

Registered trademark of Schering AG, West Germany



FROM TEE TO GREEN

ACCESSORIES FROM STANDARD GOLF INCLUDE:

- BALL RACKS
- BALL WASHERS
- BENCHES (WOOD & METAL)
- CLUB WASHER
- CHAIN
- DRAG BRUSH
- FAIRWAY MARKERS
- FLAGS
- HAZARD MARKERS
- HOLE CUTTERS
- KOOLER AID WATER CONTAINER
- LITTER CADDIES
- FLAG STICKS
- PRACTICE GREEN MARKERS
- RAKES
- SIGNS
- SPIKE KLEENERS
- TEE MARKERS
- TEE TOWELS
- TEE CONSOLES
- TURF REPAIRERS
- AND MORE

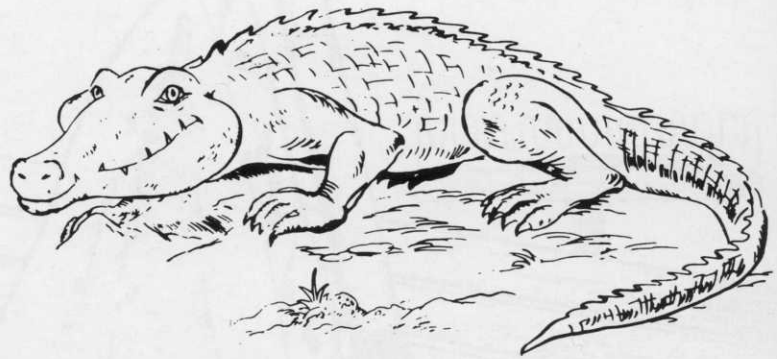
Contact your Standard Distributor.
THE STANDARD OF EXCELLENCE

STANDARD
GOLF *ProLine*

Standard Golf Company
 Cedar Falls, Iowa 50613
 (319) 266-2638

The Gator Growls

By Sandra P. Carmouche



CONSULTANTS - The Pros And Cons

Twenty years ago a golf course superintendent was just as likely to be a farmer or a pro-superintendent as a person with a degree in agronomy. At that time consultants played a major role in the golf course industry out of necessity.

Today the golf course superintendent is most likely a professional person who has attended a college or university that offers programs in golf course operations. Consultants are not needed as frequently or, as some superintendents contend, not at all.

Dick Naccarato of the Naples Beach Club, Jim Witt at Foxfire Country Club, and Buddy Carmouche of Hole-in-the-wall, all in Naples, have each worked with consultants at some point in their careers. They offered the following insights and opinions on consultants and their place in the golf course industry.

Naccarato: "The management of a golf course poses an extremely diverse variety of problems and requires a wide range of expertise. The use of a consultant helps insure a sound decision making process and efficient, economical use of funds.

A consultant is also a link between the superintendent and the club owners and can provide support on cultural practices. He is an outside person who can evaluate the course objectively. Through his many contacts with people in the industry and other golf courses, he can give new ideas and advice on procedures otherwise not known.

It is essential that a good working relationship be established between the superintendent and consultant. Advice or recommendations by a consultant who is not familiar with the budget, labor force, and equipment of those for whom he works can lead to problems for the superintendent.

The consultant must be dependable and easily accessible when a crisis arises or a major decision is required involving the golf course.

Selection of a consultant should be based on a careful study of the individual's proven technical expertise and his history in problem solving at other golf courses."

Witt: "Many golf courses throughout the nation employ

both a superintendent and a consultant in the fine art of growing and grooming the golf course and its surrounding grounds.

I am certain this works well so long as they function as a team, exchanging ideas and working for a common goal. But the bottom line is that the superintendent, who is there over 300 days each year, is ultimately responsible for the condition of the course.

In my opinion, today's superintendent has volumes of information at his finger tips. He is well educated and in command of his complex. If a problem does arise and the solution is not clear, he can call on fellow superintendents or those in related fields to find the answer. Most of these people are very helpful.

I am not an advocate of having a consultant on the payroll."

Carmouche: "I feel that golf course consultants on monthly retainers are a vanishing breed, particularly at the better clubs.

Consultants in the past were successful primarily for the preventative treatments they were able to prescribe. Now, with the higher cost of chemicals which have lower residuals, superintendents are forced to deal with most turf problems curatively rather than preventatively.

With that in mind, a consultant who comes around once a month is only as good as the information he receives from the superintendent.

Also, one of the main functions in the administrative area of the superintendent is crew motivation. How can I expect a Ph.D Agronomist from Atlanta to know the needs and wants of a transplanted Mexican in Naples, or how to make him work more effectively?

If superintendents expect to receive the salary and respect of a professional, we must make our own decisions. The days of the good-old-boy back at the barn, who no member sees, are over. A superintendent owes it to his profession to be seen and answer questions in a sincere and accurate manner.

(continued on page 21)