

Audubon handout (2)

Collier's Reserve Country Club

First Audubon Cooperative "Signature" Sanctuary

Collier's Reserve is a 448 acre residential and golf community designed, constructed, and maintained to very high environmental standards. In 1994, it was awarded the first Audubon Cooperative "Signature" Sanctuary Status for meeting Audubon International's strict criteria. The property is now an international showcase as a "Signature" Sanctuary.

What is Audubon Signature Sanctuary Status?

"Signature" status is awarded only to new communities which are designed and constructed according to Audubon International's precise planning standards and environmental disciplines. It reflects a strong commitment to the eco-systems and is considered the highest rating achievable by Audubon International. The "Signature" Sanctuary program is available in the United States and Canada. More than 30 communities are seeking the "Signature" designation and, to date, only three communities have earned it -- (Collier's Reserve was the first designated "Signature" Sanctuary).

What is Audubon International?

It is a non-profit environmental organization that specializes in sustainable natural resource management. It conducts environmental research, and offers education and conservation assistance to help people improve the quality of the environment.

Our Goal

Collier's Reserve's goal is to preserve and enhance the existing plant and wildlife habitat on the property. In addition, we seek to educate our members, residents and the local community about habitat enhancement and preservation as well as take a proactive and positive approach to sustainable development.

Five Areas of Concentration

Collier's Reserve has focused on five specific criteria in order to achieve "Signature" status. Those five areas are:

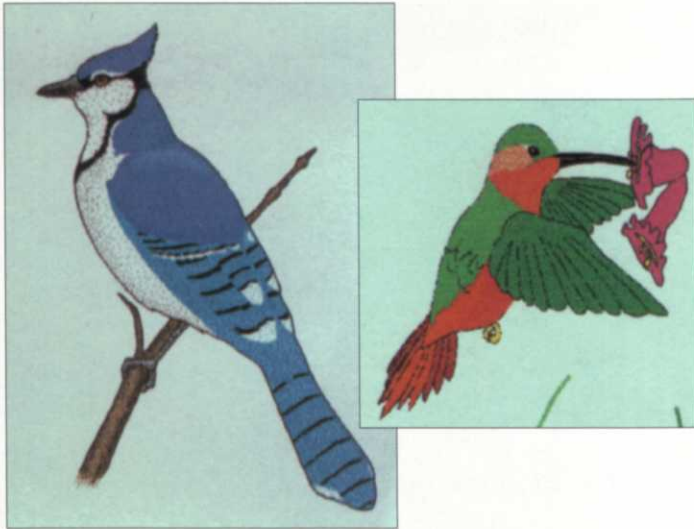
- **Wildlife Conservation** — bird nest box program, special wildlife traffic signs, etc.
- **Habitat Enhancement** — brush piles from downed and trimmed trees; native plants installed, restored and preserved
- **Waste Management** — recycle glass plastic, aluminum; nest boxes made from discarded PVC pipe and 100% post-consumer, recycled plastic.
- **Energy Efficiency** — Efficient air conditioners, white building and tinted outside windows to reflect heat away, T8 ballasts on lighting (the most energy efficient) and sky lights to minimize use of electric lights.
- **Water Conservation** — Prescription irrigation (the strategic location of sprinkler heads to minimize water use) is used to irrigate the golf turf only, as native vegetation requires no watering once it is established. All irrigation is done with effluent (re-used water) and recycled water is used in all maintenance activities.

Did you know?

- The sum total of golf courses in the U. S. absorbs over 13 million tons of dust from the atmosphere in a year
- Each golf course can generate enough oxygen to sustain 4,000 - 7,000 people per year
- Golf courses provide highly productive habitat for wildlife and plants
Golf courses can act as a significant net recharger to the aquifer while purifying water that is being recharged

- Golf courses can serve as significant fire breaks
 - They also provide vital green space for the local community

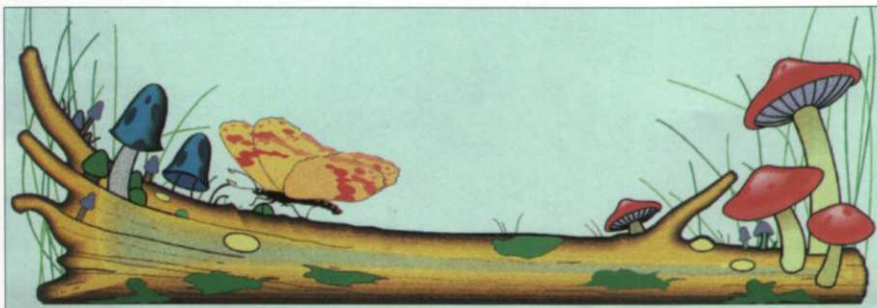




Things you can do at home

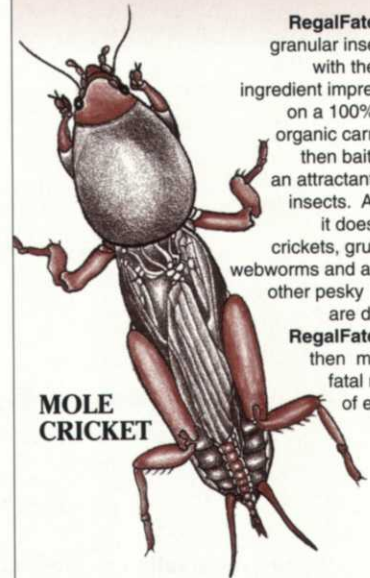
- Put up a nest box for birds
- Set up a bird feeder
- Provide a water source for wildlife drinking and bathing
- Plant trees and shrubs that produce seeds, nuts and berries as a food source
- Plant flowers that produce nectar for hummingbirds and butterflies
- Create a brush pile for small animals as habitat
- Record what you see -- make a list of all birds and animals that visit your yard
- Draw what you see
- Make leaf prints -- paste a leaf on paper
- Collect one leaf from each tree or shrub and find out what it is
- Investigate your neighborhood -- discover wildlife habitats
- Look at your trash -- find ways to recycle and cut back on waste

Commit to being an environmental steward! Join the Audubon Cooperative Sanctuary Program for Backyards. The program provides information and guidance to help you turn your home backyard into a sanctuary. You will get a packet of materials to help you get started and you will receive *Field Notes* —the bimonthly Cooperative Sanctuary newsletter. The newsletter will also provide you with new ideas and suggestions for fun conservation activities that you can do right at home. For more information contact Audubon International, 46 Rarick Road, Selkirk, NY 12158; 518-767-9051



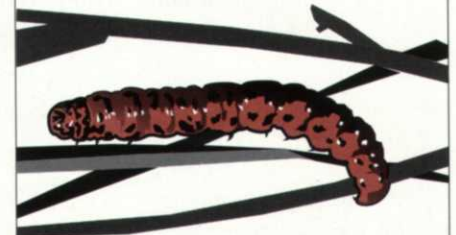
RegalFate™

THE FATAL ATTRACTION FOR INSECTS !



MOLE CRICKET

RegalFate™ is a granular insecticide with the active ingredient impregnated on a 100% edible organic carrier and then baited with an attractant to lure insects. And lure it does. Mole crickets, grubs, sod webworms and a host of other pesky insects are drawn to RegalFate™ and then make the fatal mistake of eating it.



SOD WEBWORM

RegalFate™ is many times more effective because the insect ingests it. Control by contact or vapor action is only partially as effective as the ingested toxicant. Spread the dry granular RegalFate™ for superior results.



Regal Chemical Company

P.O. BOX 900 / ALPHARETTA, GA 30239

PHONE 404-475-4837 / 800-621-5208