

- OCTOBER**
- 4th Welsh Section Autumn Meeting—Pennard G.C.
 - 4th North-West Section Autumn Meeting—Haydock Park G.C.
 - 11th Southern Section Winter Lecture—Stirling Castle, 6.30 p.m.
 - 17th North-West Section Winter Lecture—Garrick Hotel, Manchester.
 - 25th North-West Section Annual Trip.
 - 26th Northern Section Autumn Tournament—Alwoodley G.C.
 - 26th Sheffield Section Lecture—Brunswick Hotel.
- NOVEMBER**
- 8th Southern Section Lecture—Stirling Castle, 6.30 p.m.
 - 13th North-West Section Lecture—Garrick Hotel.

Get on to **GIBBS**

FOR THE

DAVID BROWN

770 12-Speed Selectamatic



PERFECT FOR 3-9 GANG MOWING

Sparkling colours (orchid white, poppy red and chocolate brown); up-to-the-minute styling; increased power; golf course tyres; PLUS SELECTAMATIC—the revolutionary simplest-ever hydraulic control system.

SWITCH TO THE 36 bhp 770. Years ahead in looks and performance.

GET ON TO GIBBS FOR FURTHER DETAILS AND A DEMONSTRATION.

J. GIBBS LTD · BEDFONT · MIDDLESEX

Telephone: Feltham 5071



By appointment to
Her Majesty Queen Elizabeth II
Suppliers of Agricultural
Machinery and Implements,
and Motor Vehicles

News



from the Sections

SOUTHERN

Chairman:
J. K. GLASS
(Thorpe Hall)

By F. W. Ford
Hon. Secretary:
68 Salcombe Gardens
Mill Hill, N.W.7

Lectures

FOLLOWING THE QUIZ ON 11th October our next meeting will be on 8th November when Mr Shepherd and Mr Wyatt, representing Patissons of Stanmore, will talk on Aeration and Drainage and other machinery for turf maintenance. This will be a topical subject and I am sure an interesting and enlightening evening for us all. This will be held at the Stirling Castle, Moorgate, at 6.30 p.m. prompt. Please note that all lectures commence at 6.30 p.m. on the second Wednesday of each month.

Peter Weston

Now that you have retired I know that

everyone in the Southern Section will join with me in sending our very best wishes for health and happiness in your coming days of leisure.

Transfer from the N.W. Section

Len Partridge from Formby has taken over from Pete Weston at Wentworth. We welcome him and son Peter into our midst and hope that as soon as they have settled in they will come along to our meetings to meet new friends.

EAST MIDLAND

Chairman:
J. BURNHAM

By S. Fretter
Hon. Secretary:
20 Woodcote Road
Kingsway
Narborough Road South
Leicester

Annual General Meeting

THE ANNUAL GENERAL MEETING was held at the Anchor Inn, Hathern, on Wednesday, 16th August 1967; the attendance was average. The chair was taken by Mr L. Cressy. The minutes of the last Annual General Meeting and the accounts for the year ending 30th April 1967 were read and carried unanimously. The secretary reported that up to date we now had 42 members and hoped by the end of the year to increase this to 50. It was carried unanimously that Mr A. J. Cook, 14 Walnut Avenue, Birstall, should be our new president. Mr J. Burnham, of Whetstone Golf Club, was elected chairman and Mr Arnold, vice-chairman. Mr S. T. McNeice was elected chairman and Mr Arnold, vice-chairman. Mr S. T. McNeice was elected section representative. The committee was elected as follows: L. Cressy, D. Bull, D. Whitehead, S. Talbot. The secretary, S. Fretter, and the treasurer, A. Thornton, were both re-elected.

New members and vice-presidents

We welcome to the section the following vice-presidents: Messrs D. G. Hill and K. R. Buckeldee. Also the following new green-keepers: D. M. O'Shea of Chilwell Golf

continued on p. 14

**everything
for the Golf
Course**

Turf cutting machines. Flagstuffs
and Flags. Hose reels. Tee Mats.
Mud brushes. Drag brushes. Sprinklers.
Gang rollers. Harrows. Line Markers.
Tools. Machines of all types for
everything concerned with Golf courses.

Send for catalogue.

PATTISSON

H. PATTISSON & CO. LTD. STANMORE MIDDLESEX
Telephone: 01-954 4171

NOW IS THE TIME

MOWER REPAIRS

A modern works fully equipped with the latest automatic grinders. A complete range of modern machinery and staffed by experienced craftsmen constantly under the control of a fully competent and diligent works manager, devoting his whole time to the supervision of the mower repair department, enables us to offer a service

SECOND TO NONE

**GOOD
REPAIRS**

**FAIR
PRICES**

**GOOD
SERVICE**

DELAY IS RISKY - BOOK AT ONCE

To avoid disappointment book your repairs NOW. Get your machines collected at once whilst there is still time to enjoy the finest workmanship and ensure that the machines are in your possession for perfect cutting when next season commences.



Authorised Service
and Repair Agents

"SISIS"

Official distributors
Sales and Service

Ransomes

Official London area distributors
for specialist machines

DENNIS & ATCO
Sales and Service



Official Distributors
Sales and Service



**FOR COMPLETE SATISFACTION -
CONSULT THE SPECIALISTS**

T. PARKER & SONS (TURF MANAGEMENT) LTD
WORCESTER PARK, SURREY
TELEPHONE: **DERWENT 7791 (6 LINES)**

PARKER FOR ALL MAKES AND TYPES

SALES



SERVICE



SATISFACTION

Club and D. Bagshaw of Stanton on the Wold Golf Club.

Congratulations

We wish Mr and Mrs J. Burnham and Mr and Mrs G. Arnold every happiness in their married life.

NORTHERN

Chairman:
D. ROBERTS
(West Bowling G.C.)

By J. Parker
Hon. Secretary:
8 Goit Stock Terr., Harden,
Bingley, Yorks.

President's Tournament

THIS TOURNAMENT WAS PLAYED on Sunday, 27th August, over the course of the Filey Golf Club by kind permission of the captain and committee. Twenty-four members competed for the trophy. The winner was R. Smith of Woodhall Hill Golf Club with a net score of 69, won on the last nine holes. The second prize winner was D. Spurden of Otley Golf Club with 69; third was J. Readhead of Bridlington Golf Club with 70. Sealed prize winner was I. Smith of West Bradford Golf Club with 90. All who travelled to Filey had an enjoyable day, favoured by good weather. Our thanks are due to Tommy Hullah for acting as checking steward. We should like to record our thanks to all members of the club staff for their help and courtesy.

Members were welcomed by Mr Franks, chairman of the club greens committee, who also presided at the presentation of the prizes. Finally our thanks to our president, Mr W. Mountain, for his generosity in arranging this outing.

Handicaps

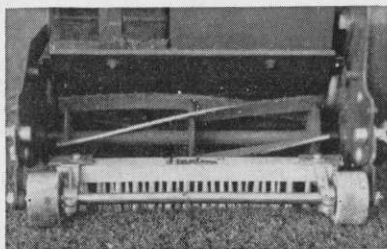
The following changes in handicaps have been made: A. Robertshaw 14 to 13, G. Bennison 13 to 12, D. Spurden 22 to 18, C. Geddes 24 to 22, W. Wilkinson 18 to 17, R. Smith 24 to 21, and C. Ramsden 22 to 20.

Autumn Tournament

Members are reminded that the closing date for acceptance of entries for the Autumn Tournament to be played over the course of the Alwoodley Golf Club on Thursday, 26th October, is Thursday, 19th October. This is absolutely necessary so that the draw and necessary catering arrangements can be made.



EDINBURGH



STEWART'S FINALAWN BRUSHES
FROM 47/6

STEWART & CO.,
SEEDSMEN LTD.
EDINBURGH, 2

NORTH-WEST

By H. M. Walsh

Chairman:
F. HALSTEAD
(Bury Golf Club)

Hon. Secretary:
78 Hadfield Street,
Oldham, Lancs.

Annual Trip

AS STATED IN THE SEPTEMBER journal the picking up point for the trip to Horbury will be the Wenneth Golf Club, Green Lane, Garden Suburbs, Oldham. The coach will leave at 8 a.m. the Captain and Council of Wenneth have kindly given us permission to use the club's car park for members' cars.

Lectures

The November talk will be given by Mr L. Hewitt of the Longton Service Branch

FOR HIRE

SISIS AUTOTURFMAN Aerator for hire, £25 per week — Do it yourself. J.'B. Burnell, 2 Clarence Road, Eaglescliffe, Stockton on Tees.

of Atco's and will take the form of instructional talk and quiz combined and will take place on Monday, 13th November at 7.30 p.m., the venue as before, The Garrick Hotel, Fountain Street, Manchester. Please let us have a good attendance. The complete list of talks for the remaining months will be given in the November issue of the journal.

WELSH

Chairman:
M. GEDDES
(Royal Porthcawl)

By S. A. Tucker
H/Sec. and Treasurer:
36 Clase Road,
Morriston
Swansea, Glam.

I AM VERY SORRY TO REPORT that I have the passing of two of our members in the death of J. D. Kenealy of Whitchurch Golf Club, Cardiff; also the death of G. E. Brennan of Morlais Castle Golf Club, Merthyr Tydfil. On behalf of the members of the section I offer our sincere and deepest sympathy to both the families. They were two very likeable fellows and we will miss them in our meetings.

SHEFFIELD

Chairman:
G. HERRINGTON
(Lindrick)

By H. Gillespie
63 Langsett Avenue
Sheffield, 6

Mr G. Herrington

WHILST VISITING THE ASSOCIATION Annual Tournament at Walton Heath our Chairman, Mr G. Herrington, was taken ill and subsequently had to undergo an operation in a Kent Hospital. I am pleased to report that he is making satisfactory progress and should soon be in active service again.

All Section members and friends wish you a speedy and complete recovery, George.

Lectures

The winter lectures will again be held at the Brunswick Hotel, Haymarket, on the last Thursday in each month. The first lecture on 26th October at 7.30 p.m. but the subject has not yet been finalised.

New Member

We welcome to the Section the following new member: R. Cheetham of Stockbridge and District Golf Club. We hope to see you at our meetings.

NORTH-EAST

J. SIMPSON
(Ponteland G.C.)

By D. Earsman
Arcot Hall Cottage
Dudley
Newcastle on Tyne 3

Sweep Tickets

I CONGRATULATE ALL THOSE members who sold tickets for the sweep. The amount collected was £54 17s. 6d. and although it was not as good as last year you made a good effort and on behalf of the Committee I thank you. I also wish to thank our Vice-Chairman, Mr R. H. Nicholson, for dealing with the Sweep tickets, and to Mrs Nicholson who does a lot of work behind the scenes for the Section in this Sweep.

Welcome

We welcome to the Section the following new members: Vice-President J Bland-Short and John Nixon.

RYAN TURF CUTTER for hire, with or without operator. G. Bunting, 14 Finham Green Road, Coventry, COV 68653.

R. C. CRAIG

AND CO. LTD.

SPECIALISTS IN THE REPAIR AND
MAINTENANCE OF ALL TYPES OF MOWERS

★ Agents for: RANSOMES SIMS &
JEFFERIES Ltd.

★ LLOYDS & Co. Ltd.
WEBBS LAWN MOWERS

★ Distributors: DENNIS BROS Ltd.

★ GANG MOWERS FOR HIRE

We will gladly call on you to advise on your grass cutting equipment or arrange demonstrations. Ring us now.

★

**153 Arch Stamford Brook
Station, LONDON, W.6.**

RIVERSIDE 5415

Mrs Greenkeeper's Own Corner

with Ann Mawson

There should be plenty of beetroot in the shops now or you might grow your own; when buying them remember the deeper they are in colour the better the flavour. Handle them very carefully for if the skin is broken and the red juice escapes, the beetroots will be pale and flavourless.

Beetroot Tops

These are very nourishing. You want very young beetroot and cook them like turnip tops. About 1½ lb of beetroot tops, salt, 1 oz of butter, pepper.

Cut off any hard pieces of stalk, then wash them in cold water and while still quite wet put them into a saucepan, add a little salt; cover and cook gently until tender. Drain very well (you can save the liquid and drink it, as a good tonic). Put the leaves into a clean saucepan with the 1 oz of butter, melted with the pepper and stir until the butter is well mixed with the leaves and very hot. Serve at once.

Beetroot Soup

Two tablespoonfuls of cream, 1 tablespoonful of flour, ½ pint of milk, 1½ pints of seasoned white stock (vegetable), 1 oz of butter, 1 large beetroot, 1 small head of celery, 1 medium-sized onion.

Boil the beetroots. Cool and peel them. Wash the celery and peel the onion. Cut all the vegetables into very small pieces. Melt the butter in a saucepan, add the vegetables and cook gently for five minutes. Add the stock, stir

well, then simmer slowly until the vegetables are pulpy and soft. Now rub them through a sieve. Return the soup to the saucepan. Mix the milk with the flour, add it gradually to the soup; keep it very smooth. Stir until it has boiled for nine minutes. Add the cream just before serving.

Beetroot Salad

A few drops of vinegar, a few drops of lemon juice, pepper, salt, 1 small lettuce, 1 teaspoonful of finely chopped chives, 2 tablespoonfuls of cream, 1 dessertspoonful of oil and vinegar dressing, 1 breakfastcupful of cooked green peas, 1 small cucumber, 4 good-sized beetroot.

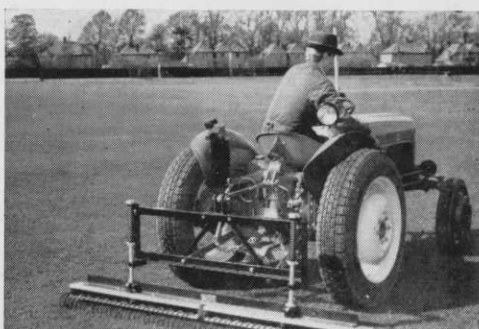
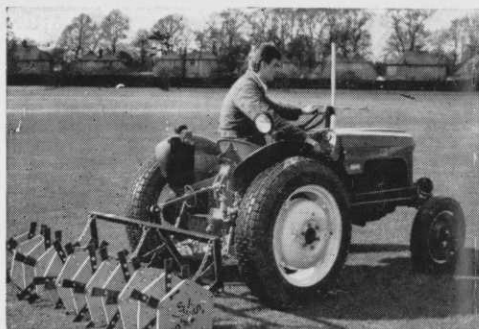
Boil the beetroot until tender, and remove the skins. Cut off the tops and scoop out the centres carefully leaving just a wall of beetroot. Cut them flat at the bottom so they will sit firm. Peel the cucumber, cut half of it into slices. Chop the other half finely, mix in the cooked peas and a little oil and vinegar dressing and fill the beetroots with this mixture. Peel the cream dressing on top, sprinkle with very finely chopped chives, serve on a bed of lettuce and cucumber.

To Make the Cream Dressing

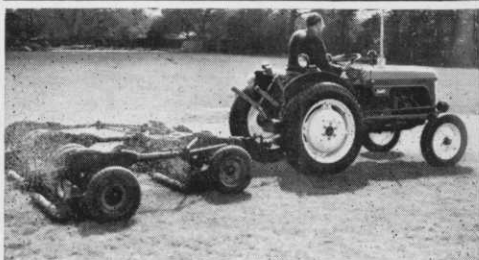
Mix a pinch of salt and pepper with the cream, whip until thick. Add the lemon juice and vinegar.

This salad is delicious and will accompany any cold dish.

—Until November . . .



**a lightweight
tractor, versatile
yet inexpensive**



BMC MINI TRACTOR

Scaled down in every way except in the capacity to handle hard work the BMC Mini Tractor is exceptionally versatile. Its light weight is a particular advantage in every phase of turf cultivation. Powered by a BMC 4-cylinder diesel engine and available with hydraulics and power take-off the BMC Mini can be applied also to loading levelling, grading, and a variety of work requiring mechanical, hydraulic or pneumatic power. Ask your BMC/Nuffield dealer to arrange a working demonstration with the BMC Mini Tractor.

H.P.U. Model £585. Standard Model £512 . 10 . 0.

Petrol-engined models are now available
H.P.U. Model £567. 10. Standard Model £495

THE **BRITISH** MOTOR CORPORATION LIMITED
(Agricultural Sales Division), LONGBRIDGE, BIRMINGHAM.
Overseas Business: BMC Export Sales Ltd.,
Birmingham and 41-46 Piccadilly, London W.1

Backed by BMC Service



Express, Expert, Everywhere