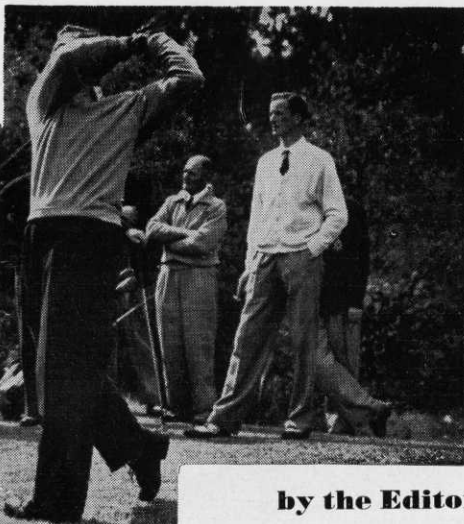


# TEE SHOTS



by the Editor

## Municipal Round-up

Players on Harborne Church Farm, one of Birmingham's 9-hole municipal courses, are having restless rounds. Some years back one of the councillors had a big scheme to turn it into a floodlit driving range. After an all-out campaign by the club and local residents this was quashed. Now one of the committees is thinking of re-zoning it as building land coupled with plans for a new 18 holes in the Woodcote Valley. So another campaign has been launched and at least a temporary respite has been granted already.

\* \* \* \*

Sherdley Hall Farm has been chosen as the site for St Helens' new 18-hole municipal golf course. It adjoins Sherdley Park where a pitch-and-putt course is already doing good business.

\* \* \* \*

Work has started on Brentwood Municipal's extension from nine to 18 holes. Mr E. W. Hunt, the parks superintendent, is in charge and, judging by progress in the first few weeks, will be well ahead of schedule when he sows later this year.

\* \* \* \*

Rotherham Parks Department has also begun the new 18-hole municipal golf course in Grange Park. This is an attractive site close to the centre and more rural than could be believed possible with heavy industry all around.

**everything  
for the Golf  
Course**

*Turf cutting machines. Flagstaffs and Flags. Hose reels. Tee Mats. Mud brushes. Drag brushes. Sprinklers. Gang rollers. Harrows. Line Markers. Tools. Machines of all types for everything concerned with Golf courses.*

*Send for catalogue.*

**PATTISSON**

**H. PATTISSON & CO. LTD. STANMORE MIDDLESEX**  
Telephone: 01-954 4171