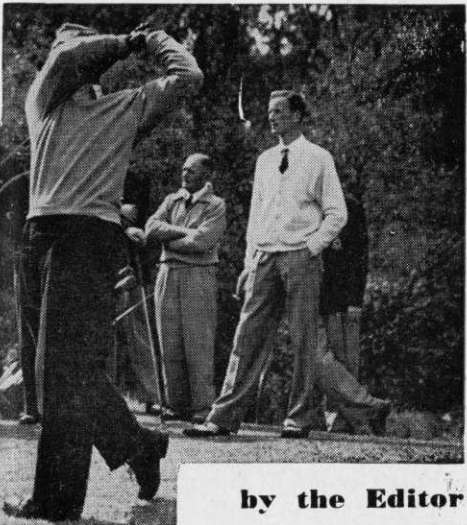


TEE SHOTS



by the Editor

Work is expected to start this year on building a new clubhouse costing £47,000 at the Maxstoke Golf Club in Warwickshire. This Club was one of the first to move out of the built-up area of Birmingham soon after the last war into a pleasant rural site to the east of Coleshill. So far, the Club has housed itself in the old coach houses in the moated Maxstoke Castle and the new site will bring the clubhouse into more intimate relationship with the golf course.

* * * *

The West Indies are still building more golf courses to meet the needs of their growing tourist traffic. The Bermuda Government has begun a new one million pound Port Royal Golf Course and the Martinique Tourist Board is building a new fr. 8,500,000 hotel with a golf course attached, near Diamont. The first part started in August should be finished in 1968 with 80 rooms, five bungalows of two bedrooms each, a swimming pool and a nine-hole golf course.

* * * *

Sand has been drifting from the West Beach at Lossiemouth on to the first fairway of the Moray Golf Club. Mr Innes Mathieson, the Club Captain, is arranging a meeting with the Lossiemouth Town Council to discuss the problem.

* * * *

Outline planning permission for an 18-hole golf course on 90 acres at Dibden, near Hythe, has been granted by the New Forest Rural District Council. The land has views over Southampton Docks and the New Forest. The owners, Property Developments (Southampton) Ltd, will get the final layout, which may include a floodlit driving range approved by the planning authority, and then put the project in the market in the hope of attracting prospective purchasers.

CANNOCK Grass Seeds
FOR HIGHEST PURITY AND GERMINATION
THE CANNOCK AGRICULTURAL CO. LTD., CANNOCK, STAFFS

SEND NOW FOR OUR FREE 'GREENKEEPING' CATALOGUE