

VISTAVISION OF THE FUTURE

"HEAD GREENKEEPER REQUIRED for 18 hole course 1 1/2th acre. Must be fully experienced in the maintenance of Wilton Carpet and expert with a vacuum cleaner Some knowledge of electronics an advantage"

" This could be the type of advertisement that the manufacturers of "Vistagolf" Indoor Golf Equipment and their sole agents, Messrs T Parker & Sons (Turf Management) Ltd., would like to see frequently in this Journal during the next few months.



Photograph shows Golfer about to take second shot to green.

THE equipment designed by "Vistagolf" sets a new standard for Indoor Golf. Simulation of actual course play is achieved by presenting the player with a series of automatically projected fairway views (approx. 8 ft. square) starting at the "tee" and progressing through the player's drive, woods and irons to the green and final putt.

Each fairway view presented indicates Hole No./Par for Hole/Yards to Green/Yards from Tee—automatically adjusted in relation to the distance the player's ball has travelled.

Out of Bounds, Hooked and Sliced shots are indicated and consequently penalized.

Covering an approximate floor area of 12 ft. by 18 ft. the equipment consists of a green Wilton carpet completely covering the above area into which at the tee off and play position is embedded two nylon brush surfaces giving a fairway tee lie and a rough lie in sections.

Facing down the fairway 15 ft. from the play position a projected full coloured 8 ft. square view of the hole in play is presented to the participant.

This target area is enclosed by duck canvas. This in turn is supported by a metal framework, suspended from which is the screen and ball return area. Situated between the screen and play position is the putting green containing the putting cup.

Again on the putting area from any one of three marked positions, the participant is directed to putt out. Attached to the metal framework are lighted legends depicting any penalty incurred by the shot played, i.e., a blue-lighted panel indicates a sliced or pushed shot instructing a rough lie for the following shot, a green panel indicating hooked or pulled shots incurring a similar penalty and finally a red panel for out of bounds.

Independently supported and working in conjunction with the legend panel are the drum type projectors situated behind the player. Housed within the equipment and easily accessible is the patented "Vistagolf" computer unit, harnessed-wired to the screen and projector and also sensitising the play area and legend panels within the same circuit. The principle on which the computer operates

is to measure the speed of the ball from the play position to the screen, therefore the shorter time a ball takes to travel from the play position to the screen the farther it will have travelled in actual course play. Having timed the speed of the shot the computer then transfers this information to the projector. The projectors then move up the fairway with a series of pictures, finally coming to rest at the position the ball would have finished.

The picture now presented to the player indicates the yardage of the shot just played and the yardage for the next shot to the green. The player having reached the green is instructed to putt from one of the three positions dependent upon the accuracy of his final chip, pitch or run up to the pin.

As previously mentioned the length of the player's drive is recorded and the yardage of the second or third shot to the green as may be, in addition.

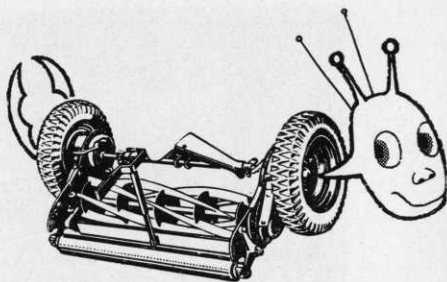
At present various courses are being photographed and in time these will comprise a film library from which the "Vistagolf" operator can draw film to replace the one at present in use in his existing projectors. The courses already photographed include the old course at Walton Heath.

The manufacturers of the electronic apparatus instal their equipment with a three years guarantee. The Managing Director of this Company states that this is possible due to exhaustive testing and the reliable components used throughout. However, following the three year guarantee period a small service charge is made which includes two free filmed course changes per annum.

This equipment, tried and tested by British Ryder Cup Golf Professionals whose assistance was invaluable and comments noted, has brought about a golf game that not only simulates all types of shots played on the course but is authentic with its accuracy. Two and four-ball matches can be played as on a course with each player playing out from the tee to the green and noting his putting position and the hole is then completed with all four putting out together.

A further advantage of "Vistagolf" is its adaptability to fit into all types of buildings, rooms, bars and lounges and its pre-fabricated construction facilitates

THE CUTTERPILLAR



Has an attachment to tractors, following them tirelessly in groups (or gangs) of 2 or 3 on playing fields, recreation grounds, fairways and similar large expanses of grass. Highly active from April to October, the Cutterpillar is thought by some groundsmen to have self-restorative powers during hibernation, but this is not so. To ensure a successful spring re-appearance careful nurturing is called for during the winter months and this is best left to experts.

Keep you grass cutting machinery in peak condition with regular Gibbs servicing. Hand, motor or gang mowers re grind, emergency repair or complete overhaul. Gibbs specialist engineers are equipped to handle them all quickly expertly.

Get on to GIBBS

FOR MOWER SERVICING

J. GIBBS LTD. Bedford, Middlesex. Feltham 5071

Specialized Distributors and Authorised Repair

Agents for **Ransomes** Lawn Mowers



By appointment
to Her Majesty
Queen Elizabeth II
Suppliers of
Agricultural Machinery
and implements,
and Motor vehicles

removal from one site to another conveniently. The manufacturers also supply as an extra a pre-fabricated cedar wood building, modern in style and attractively finished.

Finally, as an optional extra, a coin rejector box may be fitted controlling the equipment. Therefore no supervision is necessary and "Vistagolf" may be used by the public in the same manner that they would use a snooker room, i.e., a 2s. 6d. coin giving a set time for play allowed by the operator making it completely automatic.

Sole Agents for Golf Clubs, Sports Clubs, etc:—

T Parker & Sons (Turf Management) Ltd.,

Worcester Park, Surrey
DERwent 7791

Contact G P Simpson, Sales Manager

Export and other enquiries:—

Four Square Enterprises Ltd.,
4 Crosby Square, London, E.C.3.
LONDON WALL 4872.

Contact M. A. Thompson, Sales Director



EDINBURGH

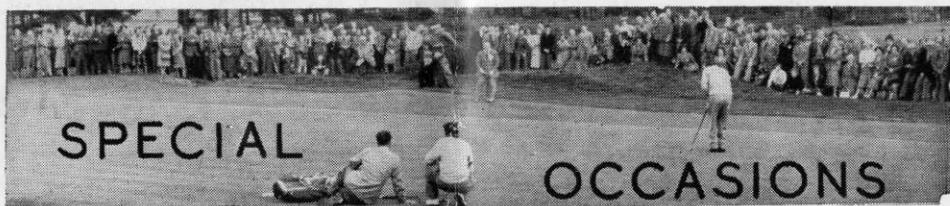
**FIBREGLASS FLAGSTAFFS
GRASS COMBS
GOLF FLAGS
AND SWITCHES**

NEW TURF SWITCH 'St Andrew'

*Metal Shaft, Fibre Glass Tip,
Length Adjustable*

£4 15s. each

**STEWART & CO.,
SEEDSMEN LTD.
EDINBURGH, 2**



MARCH	1st	North-West Section, Lecture, J. D. Ross, S.T.R.I., Bingley
	9th	South-West Section, A.G.M., Henbury Golf Club, 7.30 p.m.
	15th	Midland Section, Lecture, Film Show, Warwickshire County Ground.
	16th	Midland Section Four Ball Alliance, Harborne Golf Club.
	16th	Southern Section, Lecture, Whitbreads, 6.30 p.m.
	19th	S.G.G.A. North and Mid. Whist Drive Social.
MARCH	25th	Southern Section, Annual Dinner, North Middlesex Golf Club.
	31st	Sheffield Section Lecture.
APRIL	13th	Welsh Section, Spring Meeting, Whitchurch Golf Club.
	21st	S.G.A. West Spring Meeting, St Cuthbert Golf Club.
	26th	Northern Section Spring Tournament, Pannal Golf Club.
	28th	North-East Spring Competition, City of Newcastle Golf Club.
	28th	North-West Spring Tournament, Wallasey Golf Club.
MAY	5th	Midland Section Spring Tournament, Kidderminster Golf Club.
	12th	S.G.G.A. East Annual Competition, Royal Burgess Golf Club.
	26th	S.G.G.A. North and Mid Annual Tournament, Deeside Golf Club.
JUNE	28th	Midland President's Match, Handsworth Golf Club.
AUGUST	8th	Annual Tournament, Little Aston Golf Club.
	9th	
	10th	