

CAMERA NEWS

A Father and Thirty-Three of His Children



Here are thirty-three children of one man—John D. Sloan (at extreme right) of Sergeant, Ky. And there is still another child, born recently, who is not shown in the picture. Mr. Sloan has been married twice. There are four sets of twins and two of triplets.

Knights of Holy Sepulchre on Way to Renew Vows



In observance of a ritual dating back to the Middle Ages, the Knights of the Holy Sepulchre are shown making their way through the streets of Jerusalem to the Church of the Holy Sepulchre, during the recent special Catholic Congress held in the Holy City.

Songbird Brings Back a Novel Pet



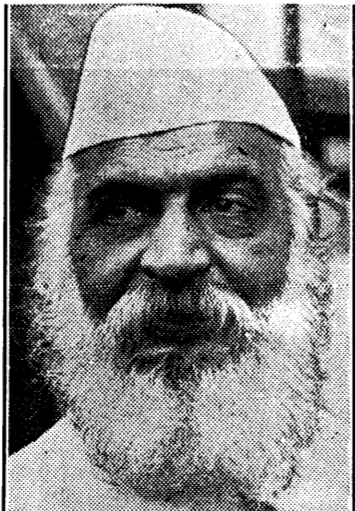
Miss Lily Pons, who is fast becoming America's premier opera singer, is pictured in New York as she arrived recently from Buenos Aires, Argentina, bringing with her a cute little baby jaguar as a pet.

Has Two Hearts



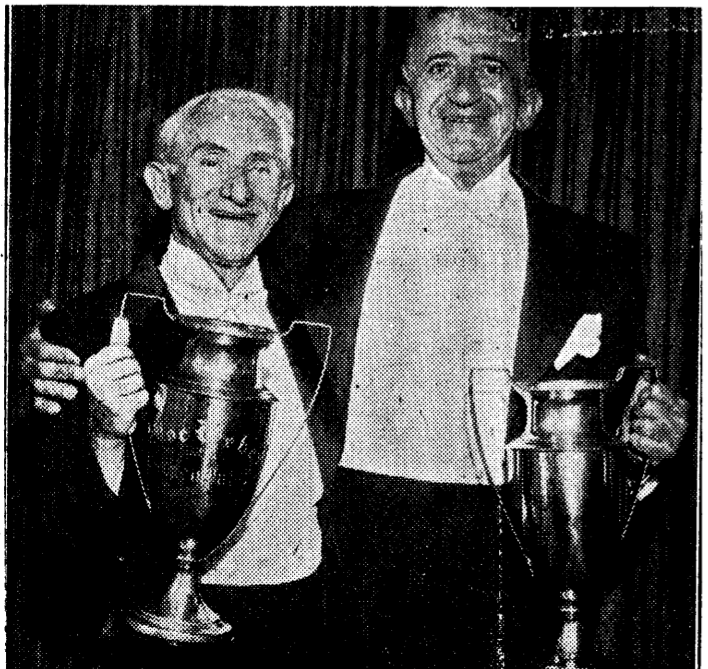
This young man, Edward Reynolds, of Pittsburgh, Pa., recently made the surprising discovery that he has two hearts. During a physical examination doctors were thrown into a panic when unable to find his heart beat. X-rays revealed his two hearts—a large one on the right side, a small one on the left side.

Indian Leader



The Hon. Vithalbai J. Patel, Indian nationalist leader, who was exiled from India because of his activities in behalf of Mahatma Gandhi, is seen above as he recently arrived in New York City to make a tour of this country in India's cause. Mr. Patel was formerly mayor of Bombay, the first Indian ever to have been elected to that office.

Celebrate 50-Year Stage Partnership



Two famous comedians, Joe Weber and Lew Fields, better known by their team name of "Weber and Fields," are seen here with the gold cups which were recently presented to them at a banquet in New York City in honor of the fiftieth anniversary of their partnership on the stage.

SAFE TO DRY UP COWS SUDDENLY

If dairy cows are giving 20 pounds or less of milk daily it is a perfectly safe procedure to completely stop milking them. This was found by experiments carried on at the University of Minnesota.

The Minnesota workers concluded that to stop milking suddenly, with cows giving 20 pounds or less of milk daily was a more satisfactory method than to leave part of the milk. These two methods were compared with intermittent milking (skipping one or two milkings).

Persistent dairy cows often are hard to dry, it was found, but such cows are the ones that most need the rest. The Minnesota tests indicate dairymen need have little fear of injuring the udder if they stop milking these cows when they have dropped to 20 pounds or less a day.

In the Minnesota tests incomplete milking consisted of leaving about one-half the milk in the udder at each milking. Intermittent milking consisted of milking the cow once a day for three days, then increasing the intervals between milking until the cow was dry.

Bacterial counts and cell counts and the quantity of milk yielded in the next lactation showed no significant difference between complete cessation and intermittent milking. It took the least time to dry the cows when the workers stopped milking entirely. Incomplete milking was regarded as the least satisfactory method of drying the cows.

Destroy Insects Now With Plow and Fire

Fall plowing and fire are the measures suggested by the entomology department at Michigan State College for destroying insects to lessen depredations in orchards and gardens next year.

Many of the pests which damage fruits and vegetables pass the winter hidden under trash or in vegetation or prunings from trees or vines. Fence rows, fields overgrown with grass and weeds, remnants from crops, or brush piles are ideal winter quarters for bugs.

Insects may pass the winter as adults, larva, or pupa, but they are ready to start a campaign of destruction in the spring if the fall clean-up measures have not destroyed them. The insects which live over winter in the ground can only be reached by fall plowing, but the burning of trash near orchards and gardens will kill thousands which use such places for winter homes.

Early frosts do not stop the increase and feeding of such insects as squash bugs and aphids which may be found in thousands of stumps of cabbage plants. The tarnished plant bug gets its fall meals from ragweed plants. Insects which attack bramble fruits can pass through all stages of their existence in the pruning from vines or canes.

The squash vine borer and the tomato worm pass the winter underground and the same winter resort serves for the bean maggot. Use of the plow on these insects and of fire for those living above ground will save many dollars next year.

Ask Onion Growers To Destroy Culls

Michigan onion growers are advised by the entomology department of Michigan State college that a great deal of trouble in next year's crop can be avoided if the piles of cull onions from the present harvest are destroyed.

The piles of culls furnish ideal places for the deposit of eggs which hatch into onion maggots. These larvae pupate in the culls or in the soil beneath the piles and emerge as adult flies in time to deposit eggs on the seed onions as they appear above the ground.

Adult flies do not all emerge at one time so the laying of eggs is prolonged over a considerable period. All these insects do not pass the winter in piles of culls, but the number which go through the winter as adult flies in sheltered places is much smaller than the number surviving in the trash piles.

The college entomologists estimate that one-half or more of the damage done by onion maggots could be eliminated if the cull piles were destroyed immediately after harvest. The destruction can be accomplished by burying the culls a foot or more beneath compacted soil or by burning.

Any culls left in the field till spring should be plowed under as deeply as possible. This is much less effective than destruction in the fall, but is better than permitting the flies to develop unhindered.

Destruction of the culls should be adopted as a practice by all growers in a district as neglect by a few growers may lessen the value of work done by their more careful neighbors.

Customer—I want a tablet.
Druggist—What kind of a tablet?
Customer—A yellow one.
Druggist—But what's the matter with you?
Customer—I want to write a letter.

Farm Situation Shows Very Little Change

Farm production is moderate, but prices showed little change during the last month, says the Bureau of Agricultural Economics, U. S. Department of Agriculture, in its October 1 report on the farm situation. The farm price index stands at 59, the same as a month ago, compared to 52, the low point in June, and 72 a year ago. Prices of cotton and wheat show a "slight improvement" as compared with prices a year ago, but prices of hogs, dairy products and potatoes are "materially lower." The general level of beef cattle prices is reported at about the same as that of a year ago.

The bureau estimates the supply of wheat in North America at about 25,000,000 bushels more than last year, and in Europe at about 50,000,000 bushels above that of a year ago, but says that prospects are for substantially less wheat in Russian and China. The southern hemisphere harvest is still about two months away. United States wheat experts so far this season are reported to have been about one-third as large as those to date a year ago.

"From the standpoint of the United States farmer, the wheat situation at this time sums up about as follows," says G. A. Collier in a summary of the wheat situation: "First, a fairly steady domestic milling demand for red spring wheat, high quality amber durum and soft red winter. Second, a continued lack of export outlet for our surplus of hard winter in the central and southwester states, and of white wheats in the Pacific northwest, because of reduced requirements in Europe, tariff and milling restrictions in importing areas, and sharp competition from Canadian and southern hemisphere supplies."

The bureau finds that "the eastward movement of grass cattle is not being hurried this fall because feed is abundant on the ranges. Relative cattle and grain prices are regarded as favoring the feeder, but the availability of credit will largely govern the number of cattle bought for feeding. There has been no such early movement of lambs out of the west as there was last summer when the ranges were hit by drought, and a much larger proportion of the lambs moved to market have gone directly to slaughter rather than to corn-belt feedlot."

Viewing the hog situation, the bureau says that "supplies of hogs for the winter marketing season—October to April—are smaller than last year's, but for next summer large supplies are a possibility. There are indications that this fall's pig crop may be larger than that of last fall. Moreover, cheap corn and feed crops well distributed, as is the case this fall, have usually resulted in the past in heavier feeding and in a larger pig crop the following spring."

Total milk production on September 1 is reported as "running about the same as at that time a year ago. Production per cow is the lowest in seven years, due chiefly to poor pastures and light grain feeding, but a 4 per cent decrease in milk per cow is about offset by 4 per cent more cows in the country."

Carlot shipments of fruits and vegetables are reported as "approaching their annual peak, averaging more than 3,000 cars per day."

Saves Peach Trees By Simple Method

Injuries caused by peach tree borer, which is the most serious insect enemy of Michigan peaches, could be entirely prevented if growers would use paradichlorobenzene to kill the borers in the trees, according to the department of entomology at Michigan State College.

The treatment is most effective if given about September 1 after the eggs of the borer have all hatched and while the weather is still warm enough to volatilize the chemical used to kill the insect. The presence of borers in trees is indicated by exuding gum.

Trees less than four years old should not be treated. The average sized four-year-old tree will require three-fourths of an ounce of the paradichlorobenzene, and larger trees will require a little more.

The crushed crystals of chemical should be placed in a ring around the tree and from one to three inches from the bark. Weeds and grass should be removed from about the base of the tree before the chemical is applied. Cover the Paradichlorobenzene with a few shovelfuls of earth.

If the trees are on very heavy soil, the material should be taken from about the tree after three weeks, but this is not necessary on most of the lighter soils where peaches are commonly grown.

SUNLIGHT FOR POULTRY

With the days getting shorter the matter of sunlight for the poultry flock should be given serious consideration by poultry producers. Sunlight which has passed through glass has had most of its ultra violet radiation reflected or absorbed by the glass and is not effective in protecting against rickets. A number of glass substitutes are manufactured which transmit a considerable part of the ultra violet radiation. They are being used quite extensively by many poultry producers. Their use is of particular importance during the short winter days when the flock is confined more or less.

POULTRY

BANISH MITES

A 50-50 mixture of kerosene and crude barboic acid, or even a three to one mixture, painted on all cracks, crevices and roosts, is not only very effective for mites but produces little discoloration and the odor soon leaves. If done just before roosting time, the fumes also get many of the body lice.

With the days getting shorter the be cleaned of all litter, and fine wood ashes or slaked lime scattered on the floor to receive any straggler that drop off the fowls unhurt. Mites can be kept from ever getting numerous enough to cause trouble. If it were not for wild birds they could be prevented entirely. As it is, watchfulness and prompt action are needed to head off that source of loss.

PLAN NEW METHOD TO SELL TURKEYS

An effort to assist Michigan turkey owners to get a fair price for the birds marketed this fall will be made by the poultry department at Michigan State college, which asks all growers of Thanksgiving birds to cooperate in this campaign.

The marketing plan is simple, consisting of bringing all the birds to a central point and securing bids for them from representatives of reliable firms. There will be no costs of organization and probably no other expense in this marketing plan.

The success of the marketing depends upon the willingness of growers to co-operate and to send information to the college poultry department about the number of birds owned and when they are to be marketed. In communities where enough birds are owned to make the centralization and bid plan practical, owners will bring their birds in at designated times to get the bids from poultry buyers.

Buyers from Detroit, Chicago, New York and other large cities have shown interest in the plan and will send representatives to bid on the poultry if they are satisfied enough birds of good quality will be offered at central points. A representative of the Michigan Turkey Growers' Association will be at the marketing points and the birds will be offered for sale on a graded basis if possible.

Questionnaires are being mailed to growers in the state who are known to the college department. Those who have not received this list of questions are asked to assist in the marketing by asking for the questionnaire and by suggesting to their neighbors that they also use the plan.

MICHIGAN HENS WINNERS IN PRODUCTION RACE

Michigan poultry farms won six of the first ten places in the International Egg Laying contest at East Lansing which recently furnished a year's test of the production ability of 1,000 hens divided into 100 pens.

The owners of the birds which won the first five places are Dundee Hatchery, Dundee, first; W. C. Eckard, Paw Paw, second; J. A. Hanson, Corvallis, Ore., third; Frank Teasdale, St. Williams, Ont., fourth; George Ferris, Grand Rapids, fifth.

Eight places out of the first ten were won by pens of White Leghorns. Fourth place went to a pen of Barred Rocks, and eighth honors were given to Rhode Island Reds. A single pen of White Wyandottes which made an excellent record enabled that breed to lead all others in average production per hen per year.

Seven hens laid 300 eggs or more during the year. The high producer was a White Leghorn owned by H. A. Keister, Bangor. This bird produced 307 eggs.

The egg laying contests have been supervised by the poultry department at Michigan State college for the past six years. A new contest with 1,000 new birds entered began as soon as the sixth race ended.

Production of Sweet Clover Seed Smaller

Production of sweet clover seed is expected to be at least one-third smaller than a year ago, when it was much smaller than usual, according to information obtained from about 550 growers and shippers by the United States bureau of agricultural economics. Fewer acres were cut in the principal producing sections and yield per acre averaged smaller than a year ago. The quality of the seed is reported to be about the same as a year ago. Prices are lower.

Growers indicated low prices and damage by grasshoppers were the chief causes for their harvesting a reduced acreage. Grasshoppers were very destructive in some of the principal producing districts, particularly in the Dakotas and Minnesota, where they attacked the plants before the seed was ripe.

Growing conditions in general were rather unfavorable this year as well as last year and the year before. Because of dry weather, seedlings failed to catch or the resulting stands were left thin in many localities in the heavy producing districts. Extreme heat caused early ripening in many cases.

The carryover is believed to be slightly larger than last year, when it dropped to the lowest point in several years. Although the supply from the 1931 crop and from the carryover of preceding crops was relatively small, retail sales last spring showed a sharp decrease from those of the year before.

H. W. TAYLOR
SPECIAL SALE, OCT. 21, 22, 24

- 18 inch Stevens Linen Crash, bleached... 18c
- 36 inch Sheeting... 6c
- 36 inch bleached Muslin... 14c
- 36 inch fancy Flannels... 13c
- 81 x 96 Quilting Cotton... 50c
- Misses Flannel Pajamas, two piece... 59c
- House Dresses, fast colors... 59-69-75c
- \$3.50 all wool Sweaters, men's Coat Sweaters... \$1.98
- Children's silk and wool Sweaters... 95c
- Children's School hose... 10c
- Men's fancy Hose... 25c
- Silk and wool Suiting... 29c
- Boy's wool Knickers... \$1.19
- Boy's part wool Knickers... 89c
- Ladie's black kid Oxford... \$2.35
- Misses' Blue Oxford... \$2.10
- Men's blue Oxford... \$2.59
- Pitted Dates, per pkg... 10c
- Fresh roasted steel cut Coffee... 22c
- 2 lb Hekman's select Soda Crackers... 19c
- 24 1-2 lb sack Flour... 39c
- Large size Corn Flakes... 10c
- Bran Flakes... 10c
- Extra Specials on Groceries will be on window.

George Foulkes for Congress



The candidacy of Mr. Foulkes for Congress was not prompted by personal ambition. It is intensely interested in the plight of the farmer and home owner, both struggling under an unfair burden of taxation. To carry his battle for just taxation to a successful conclusion, to restore the farm and the home to their owners free from the menacing threat of confiscation by the tax collector, he became a candidate for Congress, in which assembly it is his belief that his work can be most effectively carried forward. Everywhere in the Fourth District he was most cordially received. His plea for fairness and equity in tax matters, and his ideas were rewarded by his nomination. His real interest is for the welfare of the people, particularly those interested in agriculture, whose problems he understands through his long and successful experience as a producer of agricultural products. He has a comprehensive knowledge of conditions throughout Southwestern Michigan that fit him to represent the district in the halls of Congress. In private life Mr. Foulkes is industrious and successful. His deliberations upon matters of public import are conservative and sound. His many and generous contributions to the needy have been quietly made and known only to those benefited by his charitable impulses. A vote for him as the Democratic candidate for Congress is a vote to rescue the farmer and home owner—the Average Citizen—from the clutches of a taxing power that has become tyrannical; a vote to end unnecessary governmental activities; a vote to REDUCE TAXES to a level where they can be paid; a vote to put an end to extravagance in public expenditures. Mr. Foulkes will talk at Waverly town hall, Glendale tomorrow, Friday, night. —Pd. Pol. Adv.

REIGLE'S
The Store of many bargains

The home of better bargains in quality Groceries
Thursday, Friday and Saturday Cash Specials

Wheat Grits A very fine breakfast food
MADE OF WHOLE WHEAT One pound package **6c**

3 pkgs Royal Gelatin 25c and Pancake Flour, 5 lb bags. Plain or 1. pkg Vanilla Pudding 1c with burk wheat. Per Bag **19c**

Hershey's Cocoa 1-2 pound Can **10c** 1-5 pound Can **5c**

Bitter Chocolate 1-2 lb bar **19c** Karo Syrup, 5 lb pail Blue Label **29c**

Warmer this Week but let's Stock up At these prices. We have any kind of a canvas glove or a leather faced glove that you want at a very low price. School supplies, we have them THURS., FRIDAY and SAT. SPECIALS

- Good Bread Flour 24 1-2 pound sack... 39c
- 1 Bbl Flour, (better stock up at this price) **\$3.00**
- 5 lb sack Pancake Flour. The very best, not a cheap one. **22c**
- 4 large cans... 25c 7 small cans **25c**
- MILK... **10c**
- Bacon Square, pound One pound package **10c**
- Seedless Raisins... **10c**
- 5 lb. can Blue Label Syrup, Special **29c**
- 10 bars P&G or Kirks Flake Soap **29c**
- Large Chippo or Oxydol **19c**
- 1 pound Japan Green Tea... **25c**
- Work Sox, good grade, pair **10c**

MALT, all kinds. All kinds of Pancake Flour and Syrups.

Call Phone 66 and we will deliver Let's cooperate and keep our little town going **Paying Top Prices on Eggs and Cream** Full line of Fresh Fruits and Vegetables **WATCH OUR WINDOW FOR PRICES**

Ruell's INDEPENDENT Store
Open Evenings and All Day Sundays

HUDSON & SON
IT PAYS TO PAY CASH

- Armour Beans, per can... 5c
- Two pounds lard in one pound packages... 15c
- Ten pounds sugar... 48c
- Five pounds brown sugar... 24c
- Bacon Squares, pound... 10c
- Six bars Big Ben soap... 25c
- Half pound Nibs Tea... 20c
- Bloomington Flour... 40c
- Five pound sack Self-raising pancake flour... 19c
- Canvass gloves... 10c
- Jersey gloves... 10c
- Boy's Jerseys... 10c
- Yard wide bleached muslin... 7c
- Yard wide unbleached muslin... 7c
- Men's bib overalls... 69c
- Boys bib overalls... 50c
- Salt Pork... 13c

We will pay the top price for eggs

Why shout the fact that the price of fat gives you such a pain. When the price of feed is all you need to show you're on the gain. Why rant and rave and misbelieve and make your neighbor sick. Facts and figures can be had at

The Square Deal Cash Cream Station
The best year around cream market in Michigan. VAN. V. RYNO, Prop.

FAY CROZIER Beauty Shop
Specials for October
\$5 Waves Now \$3.
Steamed oil, ringlet ends. Croquignole only. No Spiral waves given.
\$1 Children Waves are given with the \$5 wave lotion.
Guaranteed for Satisfaction
No Ammonia. Best solution obtainable used for these waves.
Reline Permanents 25c per curl.
Fay Osman's Barber Shop

Time to put your Radio in condition to enjoy the long evenings. New tubes and batteries may help it may be cheaper to trade in for a new one or one already rebuilt. All electrical appliances sold at a small margin. Time to make your Christmas selections. See the new Philco at \$36.50.

Gobles Electric & Radio Shop
ADRIAN RYNO, Prop. Sign Painting Wiring Repairing Service

Saturday Specials

- 1 dozen Fried Cakes... 15c
- 1 dozen Cinnamon Rolls... 15c
- Flour sacks, each... 10c
- Saturday only, 50 cents per dozen

Quality is Our Slogan
Herman the Baker
GOBLES, MICH.
32 years in the baking business

PHIL'S DIXIE SERVICE
Larger Line of Tires. FISK price and quality. Ready to deal.

ALL DIXIE PRODUCTS Meet Phil Face to Face

Gobles Egg Producer

Laying Mash. 20 per cent Protein Low Fiber
\$1.35 Per Cwt.

Why pay exorbitant prices for egg mash? He is a real egg producing egg mash that will make you money and keep your birds in good laying condition. Made right here of the best feeds money can buy. No filler used. No oat hulls in this mash. Check the ingredients and you too will become a user of GOBLES EGG PRODUCER (State Licensed) Laying Mash. Formula: Corn Meal, Oat Flour (not ground oats with the hulls in), flour middlings, 40 per cent corn gluten meal, dried milk, Pea Green Alfalfa Leaf Meal, 40 per cent Soy Bean Meal, Darlings Meat Scraps, Bone Meal, Charcoal, Salt and Calcium Carbonate. Put your birds over on GOBLES EGG PRODUCER Laying mash and cash in on a high egg production this fall. SCRATCH FEED \$1.05

The Gobleville Milling Co.
W. J. Davis, Mgr. Both Phones Gobles, Michigan

Patronize our Advertisers

STOP IN THE LOOP HOTEL
Majestic
QUINCY AT STATE STREET
Accommodations of exceptional value
ROOMS WITH PRIVATE BATH \$2.
Beautiful meeting room for 300 people
NEW GARAGE NEXT DOOR
WALTER E. HEDMANISH Manager
JUST AROUND THE CORNER FROM EVERYTHING

Advertising SPACE FOR SALE
The News

OIL OK
TIRES OK
BATTERY OK
DIXIE OILS GASOLINE
WATER OK
GREASE OK
LIGHTS OK
A DIXIE "OK" IS MONEY IN THE BANK
When the Dixie Minute-Man checks your car he tries to do it so efficiently and so thoroughly that you'll want to come back again and again. He wants you to feel that the Dixie check-up is good service — and good business!
Let the Dixie Minute-Man check your car today. You'll get more driving pleasure — and you'll save money!

THEISEN-CLEMENS CO.
Home Office: St. Joseph, Michigan
FOR SALE BY THE FOLLOWING DEALERS:
Dixie Gobles Station DeCrocker Electric Co., Bloomington
Allen Store, Glendale F. Farley, Breedsville
G. A. Schoolcraft, Kendall R. B. Fox Store, Berlambont

TIME TO FIX YOUR BUILDINGS
for winter. A few boards or shingles now may save dollars on your buildings later and
WARM BARN'S SAVE FEED

J. L. Clement & Sons
Friends and Neighbors
Our most valued possession is your friendship and good will.
Your confidence in our ability to render complete service is the keynote of our success.
Our interest in this community is not confined to the conduct of our business. We approve of any movement which will result in progress and prosperity for the community and its people.
We are here because of your faith in the strength and security of our organization and we are giving our greatest efforts to be worthy of that faith.
THE FIRST STATE BANK
GOBLES, MICHIGAN
"BANKING FRIENDSHIPS THAT ENIRCLE THE COMMUNITY."

Special Week-End Prices on Pillow and Feather Mattress Renovating
Have Your Pillows Renovated by Our New Process, Where Feathers Are Renovated from Pillows-Thoroughly by Washed-Dried and Fluffed in Individual Containers.
Tickings Are Washed Separately and Re-Sown
Pillows Are Returned To You With Their Original Freshness
Price Per Single Pillow-40c Per Pair 75c
Lots of Four or More Pillows 25c each
NEW TICKINGS FURNISHED ON REQUEST
Feather Mattress up to 10 lb wt. \$1.; 20 lb \$1.50; 30 lb \$2.
South Haven Family Laundry
Call our Agent, RUELL'S STORE Phone 66 Phone South Haven 374. We pay toll charges.

CABBAGE
ALL YOU WANT
5c per head 50c per doz. 3 to 8 pounds
In Truck Loads \$10.00 per Ton
With Sinclair Gas Stepped up and Sinclair or Valvoline
Oils in your motor you are sure of good mileage and safe driving at all times. You get them at
A. M. Todd Company
Mentha
W. J. Richards
Kendall
Wolverine Stations
Clarence Grauman, attendant
Walter Grauman
Complete One-Stop Service Station

PRINTING
OF ALL KINDS
Letter Heads Envelopes Invitations
Business and Calling Cards
The News

» Magazines! «
New Price list is here
Ask for one
Prices on Many advance November 1.
ORDER YOURS NOW and Save
THE NEWS

Red and White Store
Al Machin, Owner
FRIDAY AND SATURDAY
Grapputs... 17c
Minute Tapioca... 2 for 25c
Calumet Baking Powder... 27c
R & W Marshmallow... 19c
Pancake Flour... 5 pounds 20c
R & W Macaroni or Spaghetti... 3 for 19c
R & W Noodles... 16c
B & W Sweet Peas... 3 for 41
Grisco, 1 pound can... 19c
Sugar, Pure Cane... 10 lbs 48c
R & W Coffee... 39c
G & W Coffee... 22c
R & W Soap Chips... 15c
Rinso, large package 19c Small package 9c
Life Buoy Soap... 3 for 19c
Sweet Potatoes... 10 for 25c
FRESH MEATS
Sausage Fresh Side Pork Frankforts
Chops Fresh Hams Bacon Squares
OPEN EVERY NIGHT