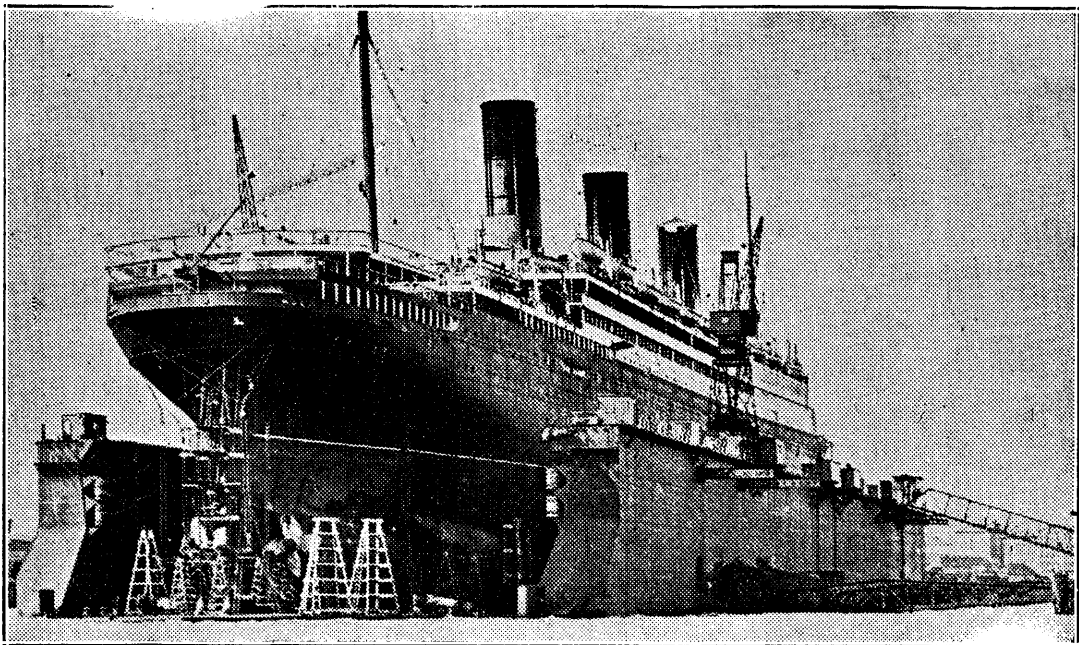


CAMERA NEWS

A Rudderless Giant Floats High Above the Water Line



Here is a most unusual view of the giant transatlantic liner Berengaria, pictured in the floating drydock at Southampton, England, as she awaited the return of her, 5-ton rudder from Darlington, where it was being repaired.

Famous Chief of Crow Indians Crosses the Great Divide



The body of Plenty Coos, 85-year-old chief of the Crow Indian tribe, is seen being carried to its grave in Pryor, Mont., with fellow tribesmen forming the funeral procession. Plenty Coos had great political influence among the Indians and long led the movement for friendliness with the white men.

Babe Ruth Gets Another Cup



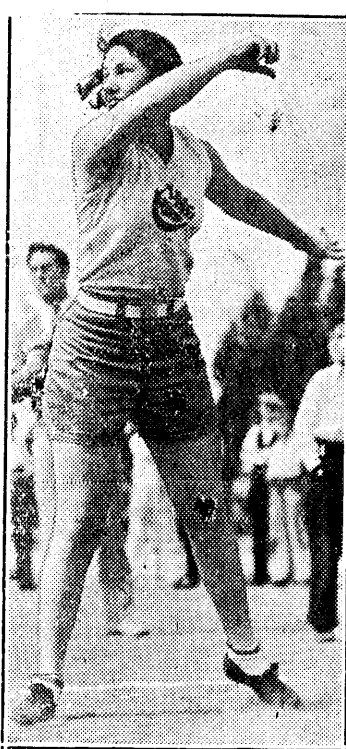
Babe Ruth is seen at the Northeast High school in Philadelphia, Pa., when he addressed the schoolboys amid wild acclaim and was presented with a loving cup. Left to right are Morris Sharupsky, Mrs. Ruth, Babe Ruth and John V. Bosch, president of the school community.

Play Ping-Pong for Sweet Charity



Two of New York's popular debutantes, Betty Schuster (left) and Mary King-Smith, are shown attired in the latest sport styles created for the game of ping-pong, as they prepared for a society tournament in this game held for the benefit of children in a hospital.

Well Balanced



Maybelle Reichardt of the Los Angeles A. C., holder of the American record for women in the discus throw is caught in action at the end of a toss during recent practice for the Olympics. Miss Reichardt is seeking to better her mark of 1166 feet 9/4 inches in the Olympic tryouts.

Chief of Y. W. C. A.



Above is Miss Cornelia M. Van Asch Wyck of Utrecht, Holland, president of the world organization of the Y. W. C. A., seen in New York shortly after her arrival there to start a tour of the branches of the Y. W. C. A. in the United States and Canada.

USE CHEMICALS TO KILL WEEDS

Troublesome patches of quackgrass, Canada thistles, poison ivy or other noxious weeds which are growing in places where it is difficult to dig them up can be killed by the application of sodium chlorate or with commercial killers made from that chemical, according to the farm crops department at Michigan State College.

The sodium chlorate is used as a spray which is prepared by adding one pound of the chlorate to one gallon of water. This spray is applied with a small, hand pressure sprayer. If commercial preparations of sodium chlorate are used they should be applied according to the manufacturer's directions.

Clothing which becomes moistened with the chlorate spray becomes inflammable when the spray dries and may be ignited by friction, so any clothes which become wet with the spray should be thoroughly washed before they dry. Dry sodium chlorate which becomes mixed with any other dry substance should be immediately discarded.

The spray is applied two or three times and the first application should be made about the time the plants are ready to bloom. The second application should be made when the plant has made new top growth and the third when growth begins again. Many plants are killed by two applications.

This method of weed eradication is not recommended for large areas. Any county agricultural agent will give residents of his county advice about this weed killing method so it may be safely used.

Increase Feed Crops

Farmers are continuing crop adjustments begun last year and are reducing acreages of those crops selling at low prices or that necessitate heavy cash expenses. At the same time they are increasing crops needed on their own farms for food and feed, says the United States Department of Agriculture in its March 1 report on crop planting intentions.

An increase in the intended acreage of spring wheat is 53.3 per cent over the acreage harvested last year. The intended acreage, however, is only 5 per cent greater than that seeded last year.

The intended increase in the corn acreage is 2.2 per cent larger than the acreage harvested last year. Oats shows an increase of 8.4 per cent over that harvested in 1931. An increase of about 21 per cent in the barley acreage is intended this year. Potato growers express an intention to increase their acreage about 2 per cent.

In general the report indicates that unless weather conditions at planting time are unusually favorable a slight decrease in the total acreage devoted to crops may be expected but with no more than average losses during the season the total acreage harvested is likely to exceed that harvested last year.

Milk Test Is Apt to Vary

Variations in butterfat tests of cream or milk which sometimes astonish the owners of dairy cows are often the result of real changes in fat content and not always the result of improper testing, according to the dairy department at Michigan State College.

The milk from individual cows, of course, varies considerably even when the cows are of the same breed and are fed the same ration. Cows which are fat at calving time will give richer milk for a short time than the same cows will give if they are thin when they freshen. The milk from each cow increases in fat content as the period of lactation progresses after the fourth or fifth month.

A cow usually gives richer milk in the winter than in the summer. Dairy men who do not milk their cows dry lose considerable fat as the first milk is lower in fat content than the portion drawn last. Cows milked often give richer milk than if the intervals between the milkings are long.

Excitement or fright usually results in lowering the quantity of milk which the cow produces and also lowers the butterfat content of the amount given. Moderate exercise after a long period of confinement in the barn often increases the fat test but the quantity of milk is often less.

The speed at which the milk separator is operated and the rate at which the milk is allowed to run into the separator affect the richness of cream. High separator speed and slow feeding of the milk into the separator both increase that fat content in cream.

Attractive Lawns

An attractive lawn is within the reach of anyone willing to follow certain fundamental rules in preparing the ground, in seeding it and in caring for the grass, once it has made its growth, according to the United States Department of Agriculture. All of the important steps in planting and caring for a lawn are described in a new bulletin—Planting and Care of Lawns, Farmers' Bulletin 1677-F—just issued by the United States Department of Agriculture.

Potash Food for Quality Vegetables

Potash is the fertilizer for quality in vegetables, particularly in those vegetables whose fruits or roots are used for food.

Wood ashes form the best potash fertilizer for the garden but wood ashes are not always available. However, hardwood ashes, which contain the highest percentage of potash of the various wood ashes are sold by all the larger seed houses. Ashes from wood fires in the grate and from bonfires should be saved carefully and spread over the garden.

Some plant experts are now inclined to view plant diseases as due to deficiencies in the diet of the plants much as some human diseases are ascribed to the same cause. Plant troubles, particularly in tomatoes, are blamed on lack of potash.

A balanced plant ration produces stocky, sturdy growth. An oversupply of nitrogen produces a heavy, sappy growth of foliage and delays maturity. The excessive use of nitrogen and phosphates without a proper proportion of potash will defeat its own end. It is therefore best in buying chemical fertilizers to buy the so-called complete or balanced fertilizers, the chemical formulae of which are indicated by figures showing the percentage of nitrogen, phosphates and potash. They are manufactured with a due regard to proper proportions and also are made up of both quick and slow acting fertilizers, so that their effect is fairly lasting.

It is safer to use these balanced fertilizers than to use too much nitrate. A little nitrate goes a long way and it should be applied only when it is desired to speed up the growth of leaf and stem. Muriate and sulphate of potash are commercial forms and they are applied by sprinkling lightly around the plants in the same manner that nitrate is applied. They are especially good for bulb and root crops.

Get Best Potatoes When Planted Early

Larger yields of better potatoes were obtained on 39 plots in Michigan last year when the potatoes were planted during the early part of the proper planting period than when planting was delayed in tests made by the farm crops department at Michigan State College.

Correct dates for planting in Michigan of course vary in different sections of the state and potatoes should be planted 20 days later in the southern part of the state than in the northern part but the importance of putting the seed in the ground relatively early holds good for all areas.

The past two years had unusual weather conditions during the growing season and early planted potatoes had an extended period in which the growth was dormant but the tubers in only one plot showed a greater degree of brown spots than those planted later and all other factors which improve potato quality were present to a greater degree in the early plantings.

Frost injury and immature stock upon which the skin becomes roughened in handling are apt to be present in stock from late plantings. Immature potatoes also cook poorly and discourage consumers from purchasing similar potatoes.

Seed in the southern part of the state should be planted early in June, a period ten days earlier should be selected for that part of the state up to the Cadillac area and from there north plantings should be 20 days earlier than in the southern three tiers of counties.

Predicts Increase In Cows on Farms

There probably will be more cows on farms in the United States on Jan. 1, 1933, just as there were more cows Jan. 1, 1932, than ever before, H. A. Ross, representative of a large dairy manufacturing corporation, predicted today.

"Farmers find it unprofitable," he said, "to remove cows from their herds so long as the price received for cows is low and so long as feed prices also remain low. While the drought reduced the milk flow of each cow in 1930 and 1931 high milk production has returned each time because of cheap feed. We can hardly expect a drought for a third year, hence we can predict an even greater supply of milk and a consequent lowering of the price to the farmer."

PREVENT BLACKLEG

Blackleg usually breaks out in the spring and the best method of controlling the disease lies in preventing it by immunizing the animals, says the Iowa State College.

The disease most frequently attacks young cattle although it may occur in swine, sheep and goats. Cattle six to eight months of age are most susceptible. The common symptom of the disease is the development of enlargements beneath the skin, usually in the region of the thigh or shoulder. Gas forms in the muscles and tissues beneath the skin in these areas and causes a peculiar crackling sound when the skin is stroked.

Grocer: Well, Jones, I can tell you're married all right. No holes in your socks now."

Salesman: "No. One of the first things my wife taught me was how to darn 'em."

POULTRY

FEATHER PICKING

"What causes feather picking and how can it be stopped?" is a frequent question, especially after large groups of chicks are well along toward frying size.

This cannot reasonably be charged to hunger for certain food elements, in flocks fed on well-balanced rations kept constantly before them; hence we must concede that it must be due, in the beginning, to an inherent inclination in little chicks to pick at something bright, and later, to the taste for blood which, once acquired, may lead to destructive cannibalism.

A few old fowls seem to acquire a habit of picking and eating mature feathers, but chiefly the habit is directed to pin feathers which carry the taste of blood. "The pinfeather" stage when chicks are getting their second coat of feathers, excites the attention of these chicks that must always be picking at something and so the habit leads to the "bareback" condition of so many chickens at broiler age.

The same thing often prevails when yarded hens are molting. "Tail picking" and "vent picking" also appear to go back to the taste for blood acquired by innocent picking at something bright or something that stands out. Chicks will stand and pick and pick at the shiny clips with which boxes or pasteboard brooder fences are fastened, or at particles of dried excrement sticking to walls about them.

The simplest cure seems to be the application of tar or something equally sticky and distasteful to the parts of the body attacked by "pickers." Cutting off the tip of the upper mandible also prevents feather picking to a large extent.

POULTRY STILL PAYS

According to figures given out at a farm conference in January poultry and poultry products stood pre-eminent among farm animals in the returns they were bringing the producer. On the basis that 100 pounds of digestible feedstuff will produce approximately the pounds of weight enumerated below the price of the finished products were compared: 100 pounds of feed will produce:

Fat hogs, live weight, 30 pounds; fat steers, 20 pounds; heavy broilers, 29 pounds; heavy hens, 20 pounds; shell eggs, 20 pounds, and butterfat, 6 pounds.

Even though eggs have declined in price fully half and hens about a third the price of eggs from good layers is still returning actual cost of feed while hens and broilers are bringing a reasonable profit. The obvious thing to do at the present time is to market all hens not laying heavily and just to hold on until things adjust themselves. There have always been periods when eggs did not pay, but they have always been followed by periods when they did. When a lot of people quit is a good time to hold on and keep on.

DISINFECT WITH FIRE

It has long been known that a high degree of heat will kill germs and that fire will utterly destroy them.

Someone discovered that a blow torch with which a high degree of heat could be applied for a moment or so without setting the poultry equipment afire would kill mites and disease germs. A blow torch especially devised for use in a large way is now available or one may use the ordinary blow torch with very good results. Always have at hand some means of extinguishing the small flames which may result from leaving the flame on one spot too long.

The blow torch is especially valuable in disinfecting after coccidiosis, the germs of oocysts of which are not easily destroyed by disinfectants. The frequent use of the "fire gun" in the brooder house is a most efficient means of destroying infection on floors, feeders and fountains.

STOP FLOOR LAYING

Many of the badly soiled eggs picked up during the fall and winter came from the habit of some pullets or on the floors under the roosts seeming a favored place, where there are of dropping their eggs from the roosts no dropping boards. The best way to train these pullets is to place clean nest boxes on the floors where the eggs are most frequently dropped. The pullets soon take to the floor nests, which can be raised by degrees, or may even be left there, if the hens seem to prefer them.

Another source of soiled eggs is the habit of some hens roosting in nests in preference to roosts. If taking these hens from the nests nightly for a week or so and placing them on the roosts does not break them of nest-roosting, better sell or eat them and get rid of that annoyance. Hanging burlap curtains one-half or two-thirds of the way across the front of nests tends to discourage nest roosting without deterring hens from entering to lay. There will be few offensively dirty eggs if these precautions are observed.

We've got to go out and win boys,
No matter what the cost,
And keep that faith unbroken—
That faith which we might have lost.

A man that goes down and can come up

Is the best man of them all;
For how do we know what is in us
If we never have a fall?—Mirror.



WEEK OF MAY 8

The rainy weather we predicted for the end of last week will finish up in Michigan at the very beginning of the week of May 8.

From about Monday to Thursday of this week we do not look for much if any storminess.

By the middle of the week temperatures will be rising in most parts of Michigan due to the slow approaching storm center from the west.

Frosts after the 18th The general trend of the temperatures will be upward and above the seasonal normal until about the middle of next week.

Annual Transition Period There is expected to be more or less sluggishness in the atmosphere as far as storm movements are concerned during this week.

The action of the sun on the air currents of the earth may be likened to a tub of water that has been set into whirling motion by means of a paddle.

We are now at the time when the winter currents are dying out and the summer motions are gaining headway.

Dinner Stories

"H?X! NO! JUST THE GAS!" "Five gallons, please." "Okay. How's your oil?"

Extra Police

A man city-bound on a tramcar the "morning after" was accosted by the conductor as follows: "Well, sir, I hope you arrived home safe last night."

A LITTLE TEASER

Quite innocent like a man stepped into a company of people and inquired in a well feigned manner: "How can five persons divide five eggs so that each will receive one and still one remain in the dish?"

THE BRIDGE OF SIGHTS

"Doctor, my eyes are bothering me a bit; see what you can do for me in the way of glasses."

MAD LAUGHTER

A THRILLING MYSTERY STORY by MILES BURTON

He had taken the train, not only because it was quicker, but because he had suspicions of Inspector Pollard and his ways.

On the way down, he amused himself by trying to impart substance to the shadow known as the Funny Toff.

He passed them in review idly through his mind, until he came to the name of Ibbotson.

CHAPTER XXXIX

Could Ibbotson and the Funny Toff be one and the same man? Now that Dick came to think of it, there was no reason against this supposition.

By the time the train arrived at Wells, Dick had convinced himself of the correctness of his theory.

Dick found the landlord of the Anchor and Hope waiting for him at the station.

ardour slightly, and they reached the inn without mishap.

"We've put you in the same room as you had before, sir," remarked the landlord.

"I'm sure I shall," replied Dick. "Unfortunately I can't stay very long this time.

As soon as the bar opened, Dick took up his position by the fire, hoping that the old man whom he had seen on his previous visit might come in.

"Last time I was here, I rode over and had a look at those workings out Nordrach way, that you told me about," Dick remarked after a while.

and was now blowing in great gusts from the southwest, as though trying to drive him from his path.

Dick rather welcomed the gale. It was exhilarating to battle with it, to keep one's course in spite of all its efforts.

He came boldly down the hill, and walked up to the gate of the yard.



To his astonishment, the door was unlocked

"No, sir, them London chaps have given up, by the looks of it," replied the old man.

"What made him think that?" Dick asked. "Have any of them been down to the place lately?"

But the latter part of the old man's speech was lost on Dick. Surely this bore out what he had suspected when he identified the fragments of mud in the packing-case!

Next morning Dick breakfasted early, and announced to the landlord his intention of walking across the moor until it was time to return and catch his train.

The sky was dark and lowering when he set out, in marked contrast to the brightness of the previous days.

erected above it, to which was attached a pulley. Over this ran a cable, disappearing in one direction down the shaft, and in the other through a hole in the wall of the building.

"Don't go down the mine, daddy," quoted Dick to himself. "Well, I don't know that I want to, particularly, though I suppose there's a cage of some sort at the bottom end of that cable, and a winding engine at the other, inside the building.

The door leading from the building into the yard was as solid-looking as the gate had been, and was fitted with a latch and a formidable-looking lock.

To his astonishment, the door was unlocked.

"That's queer," muttered Dick, as he walked through the door.

It took a few seconds for his eyes to become accustomed to the comparative gloom of the interior, lighted as it was by a single window set high in the wall.

Dick looked at these things with interest. The old man at the Anchor and Hope had been wrong, then, in his conjecture.

It seemed pretty clear that this must be the case, and that the place had merely been retained by the gang as one of its depots.

The wind had increased to gale force, roaring angrily about the deserted building.

In an attempt to avert the causeless panic which he felt closing round him, Dick endeavored to reconstruct the scene.

"By gad, I wouldn't tackle that again for a fortune," he muttered breathlessly.

CHAPTER XL

Dick's search of the yard did not reveal anything of moment. The place was littered with fragments of disused machinery.

Then, when he least expected, he had been assailed by superior force, his feet and hands bound, and lowered into the shaft.

This would never do. Dick repressed with a supreme effort, the overwhelming instinct which urged him to escape from the place.

The room in which he stood occupied, Dick reckoned, about half of the building.

So much Dick perceived before his eyes fell upon a small pile of timber, sacked away in a corner.

This was yet another fact confirming what was now practically a certainty. The furnace in the outer room had evidently been delivered in these two cases.

Dick felt a thrill of satisfaction at this new discovery. Nobody could doubt now that this was where Brooks had been done to death.

(To be continued)

Mystery of Beach Pea Laid Before Badger Scientists

The mystery of the beach pea, a plant which, although its usual home is along the eastern coast of the United States, has been found along the shores of the Great Lakes.

Although the beach pea was known to exist along the shores of Lakes Michigan and Superior for some time, it had never been known to grow in the interior of Wisconsin.

The Ontario variety varied slightly from that found on the Great Lakes and on the eastern coast, however, which is important in that it upholds one of the theories of Darwin.

U. W. No. 1045-5-2-1932

KC Baking Powder advertisement with circular logo and text: 'Same Price for 25 cents', 'Millions of Pounds Used by the Government', 'For over 40 years', 'Pure and Efficient'.

H. W. TAYLOR

Greatest Values in Years

Friday, Saturday and Monday

Bed Spreads, Rayon, at	\$1.49	Note Book Covers, at	7c
Sofa Pillows, at	49c	Grocery Specials	
Luncheon Sets, at	89c	American Family Soap, 3 for	19c
Dinnerware for six, at	\$3.98	3 bars Palmolive Soap, for	20c
Milk Bloomers, at	29c	8 lbs Rolled Oats, for	22c
Silk Hose, at	25c	Pint jar best Baking Powder, at	16c
Children's Anklets, at	10c	Quart can mixed Pickles, at	32c
Men's Dress Shirts, 2 for	\$1	1 carton Matches, at	19c
Boy's Waists, at	39c	10 lbs Sugar, at	45c
Men's best grade Overalls, at	69c	Fresh Peanuts, 1 lb	10c
Boys Overalls, at	50c	5 lb pail White Karo Syrup, at	25c

ALL SHOES GREATLY REDUCED

Sales **CHEVROLET** Service

OILS AND GAS

No free gifts, but a dollar's worth for every dollar you spend

SERVICE

None better, day or night

REPAIRS

obtained in shortest possible time for all makes of cars at low expense

New Chevrolets
Firestone Tires and Tubes

L. & C. CHEVROLET SALES
ESTUS LEVERSEE, Owner
GOBLES, MICH.

REIGLE'S

The Store of many bargains

Now is the time to get your Garden Seeds, both bulk and package

Thursday, Friday and Saturday Cash Specials

Hunt's Supreme Royal Anne Cherries, they're delicious, tall can	15c	Sani Flush for closet bowls, per can	21c
Corn Meal, 5 lb bags, fancy yellow per bag	15c	Ivory Soap Flakes, large packages, for finest silks and woolens	20c
Old Master Coffee, vacuum packed 1 lb cans	35c	Shredded Wheat, 12 biscuits to a package. Per pkg	10c
Wheat Pops breakfast food, tid bits of health. Per pkg	10c	Rice Pops, per pkg	12c

Full Line Garden and Flower Seeds

Bulk and package

CASH PRICES ONLY--Special 3 Days Only

Pure Lard, 3 lbs	20c	1 quart jar Mustard, at	15c
Bulk Coffee, a real good one, special, at	15c	3 rolls best Toilet Paper, at	19c
24 1/2 lb sack Flour, a real bread flour, at	45c	MALT, all kinds at the right prices	
1 quart jar very good Dill Pickles, at	15c	We Have Installed a Meat Display Counter	
8 oz. Vanilla, some buy, at	25c	cooled by electric refrigeration, so that we can give you the best of meats. We carry nothing but the best Meats and Groceries.	
8 bars P G Soap, at	23c	Don't forget our New Premiums on our Coffee	
2 lbs Cocoa, at	25c	Try our Home Town Bread, its hot from the oven every morning. Be careful, keep the home fires burning	
Climax Wall Paper Cleaner, 3 cans	25c	We have a new stock of premiums for our Kenny's Coffee. Come and see	

Paying Top Prices on Eggs and Cream
Full line of Fresh Fruits and Vegetables WATCH OUR WINDOW FOR PRICES
Ruell's INDEPENDENT Store
Open Evenings and All Day Sundays

HUDSON & SON

IT PAYS TO PAY CASH

Saturday, May 7th
1 Nice Water Tumbler Free
With each 50c in trade except sugar

If you trade \$3 you get a set of six tumblers free

SATURDAY ONLY

Oil Cloth, per yard	19c
New line House Dresses	89c
Best full fashioned Silk Hose	89c
Large Gold Dust	19c
Large Rinse	21c
Beans, per lb	3c
Rice, whole, per lb	5c
Good Tissue Toilet Paper, per roll	5c

1 tumbler free with each batch of eggs traded out

Many a guy has filled up on rye, and went and joined the goners; You can have your chance in an ambulance, so be careful on the corners. John Barley Corn and September Morn are a pair that of times lead us from the narrow lane to where shame and pain are waiting there to greet us.

BUT
The Square Deal Cash Cream Station
The Best Year Around Cream Market in Michigan
VAN. V. RYNO, Prop.
LEADS YOU TO GREATER PROFITS

ROLLER SKATING

At Paw Paw Roller Rink
Every Wednesday, Friday and Saturday Nights
8 to 11 p.m. Admission and Skates 25c
A whole evening's fun (3 hours) for only a quarter

SKATE FOR HEALTH
Private parties can be arranged at special rates, for clubs, churches, boy or girl scouts, etc. for any Monday, Tuesday or Thursday nights or any week day afternoon. See managers. Drop us a line or phone 2753

Paw Paw Roller Rink Company
Decker & Fenton, Mgrs. Paw Paw, Michigan

Farmers Feed Store

Good Seed Oats

Come in and look them over
Do Your Baby Chicks Die
because of improper feed. Don't take chances on your baby chicks, use

Arcady Best Bet Starting Mash & Arcady Baby Chick Grains

Dairy Feeds	Chicken Feeds
Wander, 24 per cent	Bone Meal
RKD, 16 per cent	Meat Scraps
RKD, 32 per cent	Scratch Feed
Brn	Charcoal
Middlings	Buttermilk
Cottensed Meal	RKD Besbet Laying Mash
Linsed Oil Meal	Oyster Shells
Salt, sack or block	

Wheat, Oats, Cracked and Shelled Corn, Ear Corn
SOUTHARD BUILDING
Gobles, Michigan

Custom Hatching
3c Per Egg
Turkey or Duck Eggs 4c
Bring your eggs on Tuesdays
Al Wauchek

3 Mighty Good Baby Chick Starters and Growers

Purina Protena Starting and Growing Mash \$2.10 per cwt. Nothing any better

Gobles "Makes 'Em Grow" Starter and Grower
Containing dried milk, soy bean meal, powdered yeast, coccidi-osis preventative, Nopeo Cod Liver Oil, \$1.85 per cwt.

Spartan Starter and Grower
Here is your Michigan State Poultry School Starter Mash. Mixed with our power mixer while you wait. \$1.60 per 100 without cod liver oil. \$1.70 per 100 with cod liver oil.

M. A. C. Growing Mash Ration \$1.50 per 100

See us before you buy your Clover and Alfalfa Seed. It will pay you to.

Seed Oats Going Fast
The Gobleville Milling Co.
W. J. Davis, Mgr.
Both Phones Gobles, Michigan

INSURANCE
WINDSTORM AND
AUTOMOBILE
The Travis Agency

Larger Leghorn Chicks 9c each after May 10th



AL WAUCHEK

FISK TIRES (Repair Service) SERVICE

DIXIE GAS (All Grades)
PENN-OILS REAL SERVICE (with a smile)
Big Oil Sale Closes May 14th

Wiring and Other Electric Work of all kinds
Radio Inspection and Adjustments
Will secure repairs and materials at low cost
See me about new LOW labor price
CHARLES HOWARD
Gobles Pioneer Electrician



Home Nursery, Gobles
Apples, asparagus roots, berries, bulbs, cherry, evergreens, grapes, peach, pear, plum, quince, roses, shrubs, vines, etc.
Open Sundays and Evenings
Very Seldom Undersold
4000 Dunlaps \$7

Just unloading a car of Lumber
Some Present Prices are as Follows:

No. 1 2x4, 2x6 and 2x8, 10 to 16 feet	\$30	Asphalt Shingles	\$5.25
No. 2, 8 inch Shiplap	\$27	Roof Paint, 5 gallons	\$2.50
XXXXX Red Cedar	\$3.60	Masonite, 4x4, per 1000 ft.	\$30
Shingles at	\$3.60	Clear yellow pine flooring	\$40
Lath, per 1000	\$7.50	Select yellow pine flooring	\$33
		Fir edge grain flooring	\$45

J. L. Clement & Sons

Important Announcement

Starting June 1st, 1932, our interest rate on Savings Accounts will be changed to 3 per cent

This action is in accord with changes made by other banking institutions throughout the country and is dictated by sound and conservative banking policies.

All investments are worth less and yield less than a few years ago. Naturally this reduces the income of a bank just as it reduces that of an individual. To meet these conditions, the only logical step is to keep our interest rate in line with our income.

THE FIRST STATE BANK
GOBLES, MICHIGAN
"BANKING FRIENDSHIPS THAT ENRIQUE THE COMMUNITY"

A Few Boxes Left of Fine Candy for Mothers' Day
CROTOX
The sure fire protector for Planted Seeds. Saves loss of seed from birds and animals. Aids germination and makes larger yields.
60c and \$1 Sizes

LEAVE FILMS HERE FOR DEVELOPING

McDonald's Drug Store
GOBLES, MICHIGAN
The Best of Everything in Drugs

Alfalfa Seed is the Cheapest IN Years

Farm Bureau Seeds are best year after year
Certified "Hardigan," Hardy Michigan
You can raise certified seed

Fancy Grade	\$17.50 bushel
Choice Grade	\$16.50 bushel
Utah-Montana Grimm	\$14 bushel
Michigan Variegated	\$13 bushel
Utah-Montana Common	\$12.50 bushel

There are cheaper seeds but none that are better

A. M. Todd Company
Mentha
W. J. Richards
Kendall

Heavier Grease and Oils
are needed at this season. Better change today.

New Sinclair Gas
stepped up 70% to advance in price
Many Ethyl users are now using this new gas.

Walter Grauman
Complete One-Stop Service Station

MODERN MACHINERY

Skilled Workmen in both CUTTING and DESIGNING, low overhead and a Fine Line of Better

Monuments and Markers
are our reasons for soliciting the continuance of your patronage of us when in need of anything in

Monumental Work

Our Experience is at your service
See us at once for Decoration Day Setting

Gobles Marble and Granite Works

PUBLIC DANCE

Every Saturday Night
Odd Fellow Hall
Gobles, Michigan
5 cents PARK PLAN

Round and square dances
Good music Good management
Everybody come
Music starts at eight

JIM WARD, Manager

« printing »

ATTRACTIVE, UP-TO-DATE, PRINTED MATTER IS AN ASSET TO ANY BUSINESS . . . THAT'S THE SORT OF WORK WE DO HERE, AND YOU'LL BE SURPRISED AT HOW LOW OUR PRICES ARE.

The Gobles News