



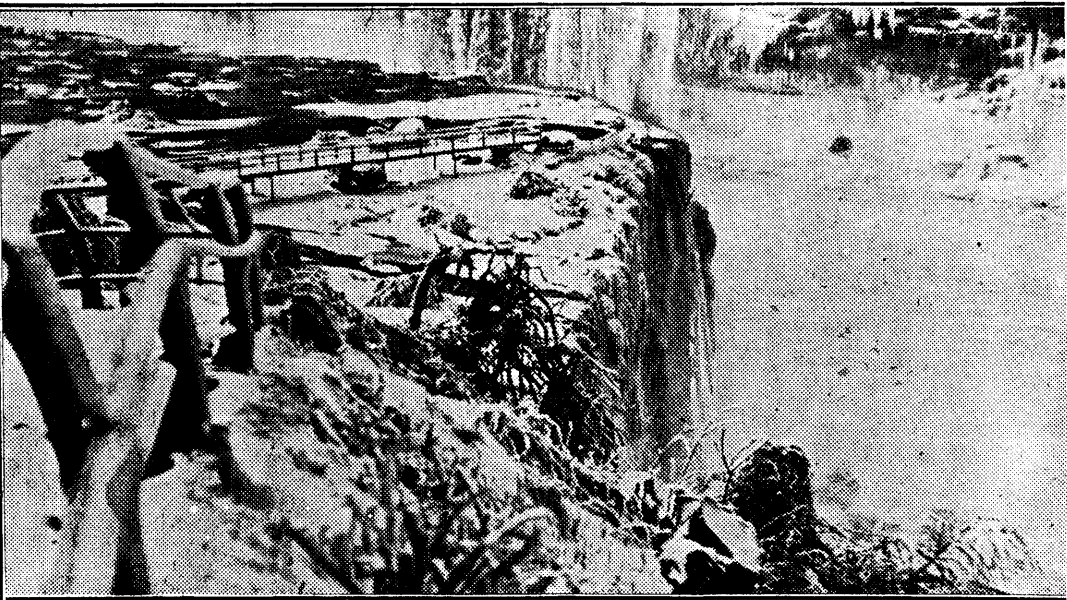
# CAMERA NEWS

## If the Parachute Fails to Pass So Does the Student



Since parachutes must be folded with great exactness if they are not to fail at the crucial moment, there is now a school in the art of parachute packing at Rantoul, Ill. Graduates are required to make a parachute jump with one of their own chutes before being given their diplomas, and here we see one of them taking his final examination. It would be terrible if he flunked!

## King Winter Stills the Mighty Roar of Niagara Falls



The roar of New York state's mighty Niagara Falls is temporarily silenced, as seen in this picture of the famous cataract, almost completely frozen over by the zero weather which followed in the wake of the fierce storms that recently swept over the North Atlantic states.

## Town to Be Governed by Women



After July 1 the municipal affairs of Duvall, Wash., will be completely in the hands of women, since the recent elections put in office a feminine mayor and three women members of the council, leaving only two men in the government. Mrs. A. S. Bourke (right), is the mayor, and Mrs. Cora L. M. Roney (left) one of the councilwomen.

## A Prodigal Prince and His Mother



Prince Lennart of Sweden is pictured greeting his mother, Grand Duchess Marie of Russia for the first time in 18 years, when she arrived in London for his marriage to Karin Nissvandt, which took place, although the prince became plain Mr. Bernadotte and was forced to give up his royal claims.

## Seeks Jump Record



Above is Smaranda Sraescu, Rumanian girl parachute jumper and holder of the European altitude record for this feat, who is at Sacramento, Calif., attempting to better the present world's record of 21,827 feet. Bad weather balked the first attempts of her pilot to fly to the requisite height.

## To Study Rays



Dr. Arthur Compton, famous professor of physics at the University of Chicago, is pictured in that city shortly before he left for a tour of mountain ranges in Panama, Peru, New Zealand, Australia, Hawaii and Alaska, where he will measure the intensity of the mysterious cosmic rays with his newly invented apparatus.

## SEED LOANS TOTAL \$598,971

More than 3,500 loans totalling \$598,971 have already been made to farmers for crop production this year from the \$50,000,000 fund allocated to Secretary Hyde by the Reconstruction Finance Corporation Act for 1932 crop production loans, Henry S. Clarke, National Director of the 1932 Crop Production Loan Office said.

The figures represent business done by the seven regional offices of the organization up to Friday night (March 18). The average loan is slightly over \$170. Loans are being made from every regional office. These offices are located at Washington, Memphis, St. Louis, Minneapolis, Spokane, Salt Lake City, and Dallas. Although detailed figures were not announced on the regional offices, C. L. Cobb, manager of the Washington office reported that his office had loaned \$231,351 to 1,698 farmers, an average of \$136 to each farmer. The loans from the Washington office have been made to four states. There were 925 for South Carolina, 516 for Georgia, 228 for North Carolina and 29 for Florida.

More than 20,000 applications for loans have been received at the Washington office and an emergency force of 250 people are at work on them. The office expects to handle 5,000 loans a day next week, Mr. Cobb says.

## Start Lawns Early

Lawns started in the spring should be seeded as early as possible, according to J. C. Russell of the Nebraska College of Agriculture. As soon as the soil is ready to work it should be spaded, leveled and packed. Manure and bone meal worked into clay soils will improve the chances for obtaining a good stand of grass. Black soil may be improved by working a lawn fertilizer, rich in phosphorus, into it at the rate of 2 pounds for every 100 square feet.

Phosphorus fertilizers contribute to root development and early growth. They make soil factors more favorable for deep rooting which is essential for the grass to withstand drought.

Pure bluegrass seed with a sprinkling of white clover makes a good mixture for spring seeding. The white clover helps to keep weeds in check. Bluegrass seeded at the rate of 45 or 50 pounds per acre is not too much. Satisfactory weed control lies largely in getting a weed-free stand of grass.

Proper fertilization and frequent watering enable the grass to make sufficient growth to keep the weeds in check.

Topdressing the lawn with nitrogen fertilizers such as ammonium sulphate and blood meal will stimulate growth. A mixture of one-half pound each of ammonium sulphate and blood meal may be applied to each 100 square feet of lawn space. Ammonium sulphate will give immediate results and the blood meal will stimulate growth later in the summer.

## Good Corn Crop Likely This Year

With average weather this year Michigan farms should harvest a good corn crop next fall. With much of the land already plowed farmers are in position to plant the crop early.

Early planted corn usually gives the best yields. This has been observed repeatedly in farm and experiment station tests.

A 10-year test by the Ohio agricultural experiment station shows a loss of one bushel of corn per acre for each day of delay in planting corn after May 15.

## Wolves Were Not Exactly Charmed

The age-old belief that the music of a violin hath power to charm the savage beast of a wolf and send it slinking away in shame may have to be modified insofar as it concerns the wolf's emotions, remarks a bulletin of the American Game Association. According to a science letter from London, a musician playing a violin out of sight behind the wolf cages at the London Zoological Gardens caused the animals within to tremble and put their tails between their legs, but when he stepped in front of the cages the wolves lunged at him in violent anger.

## Duck Among Turkeys Is Afraid of Water

That inherited instincts may not be as powerful in the lives of wild creatures as "home training" was demonstrated on a game farm in Pennsylvania this year when a duck, hatched and reared among turkeys, persisted in roosting in trees and being afraid of water, says a bulletin of the American Game Association. The duck had to be forced to swim. The experiment was reported by Charles A. Hiller, superintendent of game propagation of the Pennsylvania game commission.

## So Did She

New Stenog: "Sharpleigh called about his account this morning." Dunn-Brown: "And you told him I'd just left for Europe?" New Stenog: "Yes, and that you wouldn't be back till this afternoon."

## Government Beef Grading Service In Growing Demand

The "truth-in-beef" movement is growing, the U. S. Department of Agriculture reports. From July to December, 1931, representatives of the department graded and stamped 80,831,045 pounds of beef, or an increase of 46,190,568 pounds as compared with the same period in 1930. In January this year, 13,642,303 pounds of beef was graded and stamped, which is 71.4 per cent more than the quantity thus certified in January 1931.

The greatest gains in January were made in Chicago, Detroit, Buffalo, Kansas City, St. Louis, Washington, Philadelphia and New York, where an increasing number of consumers are demanding of retailers the authoritative certification of their beef for quality. The department reports that with Government beef graders stationed at Boston, New York, Philadelphia, Washington, Buffalo, Erie, Detroit, Chicago, Sioux City, Omaha, Kansas City, St. Louis, and National Stock Yards, government graded and stamped beef is available on demand through local meat distributors to practically every retail meat dealer east of the Rocky Mountains.

The department has developed a new roller stamp much smaller in size than the one now used, for use by all official graders in imposing upon the beef the official designation of quality. The sides of beef are stamped in such manner that the U. S. grade appears on each retail cut. The service is aimed also at improving the economic position of the livestock industry through stimulating a demand for high quality products. Many packers who consistently use the department's service declare that it has opened up to them larger selling areas where they were formerly unable to compete satisfactorily with established beef selling agencies.

## Poor Forage Causes Paralysis of Sheep

The open winter, which has permitted farmers to run sheep on pastures much of the time, has resulted in the animals consuming so much low quality roughage that digestive disturbances followed in many cases by partial paralysis has been reported as affecting many ewes, according to the animal husbandry department at Michigan State college.

The same troubles may occur when the sheep are fed non-leguminous roughages, although they are not allowed to forage in the fields. Liberal feeding of good alfalfa or clover hay will prevent the digestive disturbances which culminate in paralysis. Flocks which contain some affected individuals should immediately be put on a grain ration in addition to a good roughage. Each ewe should receive a pound of grain daily, and a mixture of two-thirds oats and one-third bran is especially good.

The symptoms shown by animals affected by too great quantities of poor roughages are sluggish appetite, partial blindness, head turned to the side and animal turning in circles and partial paralysis, usually of the hind-quarters.

Animals showing paralysis should be given four ounces of Epsom Salts in a pint of water. This treatment helps animals which are not too seriously paralyzed.

All breeding flocks of ewes should receive a grain ration for at least 30 days before lambing. The grain mentioned is ideal for this purpose. A ration of corn alone, in large amounts, frequently results in weak lambs.

## Bees Work So Hard They Cheat Owners

Honey bees are so ambitious that their restlessness may lead them to form habits which are injurious to the owners of Michigan orchards who place bees among their fruit trees to secure pollination of the fruit blossoms, according to members of the horticultural department at Michigan State College.

Bees placed in the orchards before the fruit blossoms open are apt to start work on other flowers and, if these furnish a desirable source of nectar, the bees may continue to work on them and neglect the fruit blossoms when these are ready. Some varieties of fruit set very light crops unless bees are used to secure the pollination of the blossoms.

To avoid the danger of bees forming the habit of working outside the orchard the hives should be placed among the trees only a short time before the blossoms are ready. Dandelions are the chief competitors in Michigan, of the fruit blossoms, and the latter furnish a more liberal supply of nectar.

The policy of using bees in Michigan orchards has become so well established that many horticulturists now own enough hives of bees to perform the work of transferring pollen. Other fruit growers rent bees from commercial apiaries and hives of the insects are placed in the orchards during the blossoming season.

In orchards which have large blocks of self-sterile varieties of fruits, branches carrying blossoms of other fruit varieties may be placed in the trees to provide the bees with pollen for cross pollination.

## POULTRY

### FARMERS HOLDING MORE HENS BUT EGG PRODUCTION DECLINES

Farmers have been getting low prices for eggs, but the number of hens on farms March 1 was 2 1/2 per cent less than on March 1, 1931, according to the Bureau of Agricultural Economics. Reports from principal consuming markets show receipts of poultry in January and February from 10 to 30 per cent smaller this year than last year.

The hens in farm flocks are laying fewer eggs, and the total production of eggs laid by farm flocks on March 1 this year was 5 per cent less than on March 1 a year ago. The number of eggs laid per farm flock on March 1 was 34.1 eggs, compared with 35.7 eggs a year ago, and 38.6 eggs in 1930. Computing it another way, the bureau says that the number of eggs laid per 100 hens in farm flocks on March 1 was 41 eggs, compared with 42.6 eggs a year ago, and a five-year average of 37 eggs on that date.

Egg production per hen on March 1 fell off in the West North Central and Far Western States compared with a year ago, on account of unfavorable weather and short feed supplies in portions of these areas. In the south and east, however, production per hen was higher than on March 1 a year ago, and was almost equal to the record high layings of March, 1930.

### CROSSING BREEDS

We often receive inquiries as to the advisability of crossing Leghorns with one or another of the general purpose breeds with a view to increasing the size of the progeny so that they will be better market fowls and still keep the laying tendencies of the Leghorns. On the surface, this sounds like a perfectly reasonable and feasible project, and it would be but for the facts that market buyers are not generally inclined to be "reasonable" about the appearance of Leghorn characteristics in market fowls and that fancy egg markets penalize "mixed" eggs.

Therefore, while the mixed chicken may present a fine plump carcass of the size desired, the evidence presented by the comb and legs may throw it into the "Leghorn" classification at a reduced price. Likewise, the eggs which are usually the color known as creamy or "no color" are never admitted to eastern fancy grades, no matter how large, clean and fresh, but suffer a penalty of from 5 to 10 cents per dozen according to market supply.

Cross-breeding between two brown-egg breeds may have certain advantages if the birds are to be used for market purposes only. The eggs retain their brown color and quality for a fancy brown egg market, while the carcasses, well finished, bring top prices. A special advantage in some cases is that certain crosses show color characteristics in the chicks that enables separation of the sexes at hatching time. The cross between Barred Rock females and Rhode Island Red male is an especially desirable one for market purposes.

### FACTORS AFFECTING FERTILITY

Poultry keepers are often puzzled as to why there should be a high percentage of infertile eggs in a flock where there is an ample number of males to bring about complete fertility, so far as can be rated by average visibility. There are various factors to be considered. The physical condition of both males and females, housing and ventilation conditions, which affect physical comfort, internal parasites and by no means least, the kind and quality of feed. Strong livable germs in eggs cannot be produced from feeds lacking vitamins—those mysterious life-giving forces emanating from the ultra violet rays of the sun and coming either direct from the sunshine itself or through feeds impregnated with them, or coming from other sources in nature. The fertility vitamin is known as vitamin E and is stored richly in alfalfa and, in varying degrees, in all green feeds.

Until fowls can get succulent green feed outdoors, laying hens should have at least 10 per cent of alfalfa or alfalfa leaf meal to contribute to fertility in hatching. Milk is also highly contributory of these life-giving forces so may profitably be fed either in the form of the fresh or dried product. Even with all suitable feeds, the value of the direct mid-day sunshine should not be overlooked, or its equivalent in cod liver oil, about 1 per cent or the mash.

With everything else taken care of, a few small matted feathers drooping across the vent may affect the fertilization of eggs, which is a factor seldom realized.

### LOW-GRADE CHICKS HIGH AT ANY PRICE

Purchase of an inferior grade of baby chicks to save money in the spring is an expensive economy move when the birds reach maturity, the poultry department at Michigan State college warns.

In a majority of cases where chicks are bought at low prices they do not possess laying qualities found in accredited fowls. The difference in price between good chicks and mediocre ones is usually but a few cents, but ultimate results are usually losses, the department pointed out.









## H. W. TAYLOR Friday and Saturday Specials

5 lbs pale white Karo Syrup, at .....	32c	Extra quality Sheets, at .....	59c
½ lb best grade Green Tea, at .....	24c	Pillow Cases, 42-36 at .....	15c
Santos Coffee, at .....	23c	Hand embroidered Night Gowns, at .....	39c
10 bars P G Soap, at .....	32c	Silk Crepe Slips, at .....	79c
3 cans Corn, at .....	25c	Non run Bloomers, at .....	49c
5 lbs Soap Chips, think of it, at .....	33c	Rayon Bed Spreads .....	\$1.49
Large Flakes or Toasties, at .....	11c	Sateen Pillows .....	49c
5 cans Pork and Beans, at .....	24c	Ladies' all silk Hose .....	50c
6 boxes Blue Tip Matches, at .....	25c	\$1 Ladies' Silk Hose .....	39c
3 rolls Toilet Paper, regular 10c grade for .....	19c	Rayon Hose .....	23c
		Men's Dress Shirts up to \$2.50 .....	98c
		Men's genuine broadcloth Shirts .....	49c
		Men's Coat Sweaters .....	98c
		Boys Tweed Pants .....	98c
		Billy Boy Overall Suits .....	50c
		Ladies' Gingham Aprons .....	39c
		Best grade fast color House Dresses .....	98c

**BRING YOUR EGGS**

Sales  Service

## Be Sure to Get THE NEW LOW PRICES On Chevrolets

Drive one and you'll buy no other. Immediate delivery

### \$445 and Up

The Chevrolet Six is NOW, MORE THAN EVER--THE GREAT AMERICAN VALUE

**L. & C. CHEVROLET SALES**  
ESTUS LEVERSEE, Owner  
GOBLES, MICH.

## REIGLE'S

The Store of many bargains

Don't forget your Garden Seeds for outdoor planting

### Thursday, Friday and Saturday Cash Specials

Corn, white or Golden Bantam, No. 2 can  
Peas, extra sifted, early June peas, No. 2 can  
Hart brand Red Kidney Beans, No. 2 can  
Pride of Michigan or Butter Cup Wax beans, No. 2 can  
Defiance Tomatoes, No. 2 can  
Defiance Pumpkin, No. 2 ½ can  
VanCamp Kraut

All of exceptionally high quality will not last long at these prices  
**3 CANS FOR 25c**

Post Whole Bran, 2 green dishes free with each 2 pkgs. 2 pkgs for 25c  
Cookies, Hekman's, a fine molasses flavored cookie, rich and crispy. 2 lbs for 25c  
4X Sugar, powdered, per lb 6c

Hershey's Cocoa, kiddies all like it. 1 lb can for 11c  
Peaches, 8 oz tin, packed in rich syrup. Will not be in until Friday. Per can 5c  
San Marto Coffee, a pleasing coffee for particular coffee drinkers. Per lb 29c

BUTTER,  
PER POUND,  
21c

## Full Line GARDEN and FLOWER SEEDS

Bulk and package

### CASH PRICES ONLY

No. 2 ½ can Pumpkin, 3 ½ oz regular price .....	10c	3 cans Milk, at .....	20c
1 carton Matches, at .....	15c	5 lbs Pancake Flour, at .....	19c
8 bars P G Soap, at .....	25c	Quart Salad Dressing, at .....	25c
10 bars Kirks Flake Soap, at .....	35c	6 pounds hand picked Beans, at .....	20c
Pure Lard, 3 lbs .....	25c	We have all kinds of Meats: Side Pork, Pork Chops, Pork Loin Roast, Pork Shoulder, Round Steak, T-Bone Steak, Ham, Burg and Sausage, Bacon Squares, Canadian Bacon, Pork Liver and Veal	
Good bulk Coffee, special, at .....	19c		

Paying Top Prices on Eggs and Cream  
Full line of Fresh Fruit and Vegetables WATCH OUR WINDOW FOR PRICES  
**Ruell's INDEPENDENT Store**  
Open Evenings and All Day Sundays

## Red and White Store

Al Machin, Owner

THURS., FRIDAY, SATURDAY

R & W Marshmallows, 1 lb .....	19c
10 lbs pure Cane Sugar .....	47c
Sunshine Cookies, 1 lb .....	19c
R & W Soap Chips, large size .....	15c
Swansdown Cake Flour .....	25c
2 lbs 4X Sugar .....	17c
Mazola Oil, per pint .....	23c
Mazola Oil, per quart .....	39c
P G, Kirk's Flake or R & W Soap, 3 for .....	10c

### We Have a Deal on Coffee

1 lb R & W Coffee and a 6 cup Clear Drip .....	98c
2 lbs G & W Coffee and a Clear Dip, at .....	98c

Meats, a Special for Saturday

OPEN EVERY NIGHT

On resurrection morn, won't we all look cute  
When Gabriel toots his horn, and tells us to loop the loop;  
We won't pull no boner as the wise old sages say,  
We will just knock a homer, on that glad and glorious day.

and

### The Square Deal Cash Cream Station

The Best Year Around Cream Market in Michigan  
VAN. V. RYNO, Prop.  
will guarantee to run the bases every time we go to bat

## Special Announcement!

the  
**South Haven Family Laundry Co.**  
take pleasure in announcing a  
**48 Hour Laundry Service**  
to be rendered to you through  
**Ruell's Independent Store**  
our authorized representative  
All work called for TUESDAY will be returned THURSDAY  
**Watch Ruell's Ad for Specials**

## Farmers Feed Store

We have a good line of Feeds that satisfy and are  
**Priced Within the Reach of All**  
**Do Your Baby Chicks Die**  
because of improper feed. Don't take chances on your baby chicks, use  
Arcady Best Bet Starting Mash & Arcady Baby Chick Grains

Dairy Feeds	Chicken Feeds
Wonder, 24 per cent	Bone Meal
RKD, 16 per cent	Meat Scraps
RKD, 32 per cent	Scratch Feed
Bran	Charcoal
Middlings	Buttermilk
Cottonseed Meal	RKD Besbet Laying Mash
Linseed Oil Meal	Oyster Shells
Salt, sack or block	
Wheat, Oats, Cracked and Shelled Corn, Ear Corn	

Vern Thayer Bill Lamphere  
**SOUTHARD BUILDING**  
Gobles, Michigan

**FISSK TIRES** (Repair Service) **DIXIE GAS** (All Grades)  
**SERVICE**  
  
**PENN-OILS** (and others) **REAL SERVICE** (with a smile)  
**DIXIE SERVICE STATION**

## 3 Mighty Good Baby Chick Starters and Growers

Purina Protena Starting and Growing Mash \$2.10 per cwt. Nothing any better  
Gobles "Makes 'Em Grow" Starter and Grower  
Containing dried milk, soy bean meal, powdered yeast, coccidiosis preventative, Nopco Cod Liver Oil, \$1.85 per cwt.  
Spartan Starter and Grower  
Here is your Michigan State Poultry School Starter Mash. Mixed with our power mixer while you wait. \$1.60 per 100 with cod liver oil. \$1.70 per 100 with cod liver oil.  
See us before you buy your Clover and Alfalfa Seed. It will pay you to.  
**Seed Oats Going Fast**  
The Gobleville Milling Co.  
W. J. Davis, Mgr.  
Both Phones Gobles, Michigan

## INSURANCE WINDSTORM AND AUTOMOBILE

The Travis Agency

## You Need Not Hunger

with good bread only 5c a loaf  
**Salt Rising Bread Every Thursday**  
Our Saturday Specials  
went over big last week. Don't miss them this week.  
Will appreciate special orders for baking for special occasions  
**GOBLES BAKERY**  
Hod Geiger T. Walters

March Chicks all Sold  
**Only a Few April Chicks Unsold at 12c each**  
**AL WAUCHEK**


## HOME KILLED

Beef, Pork, Veal and Lamb  
**Fresh Fish Fridays**  
**Chickens Saturdays**  
BEST OF EVERYTHING IN MEATS  
**VERNE STEPHENSON**  
Gobles, Michigan  
**Custom Hatching**  
**3c per Egg**  
Turkey or Duck Eggs 4c  
Bring your eggs on Tuesdays  
**Al Wauchek**

## READY TO CONTINUE

servicing you with

**Everything in Building Materials**  
AT LOWEST POSSIBLE MARGINS  
GOBLES LUMBER DEALER  
**J. L. Clement & Sons**

"My Savings Shall Start With Tomorrow"  
"My savings shall start with tomorrow," Is what nearly all of us say; But the man who really gets somewhere, Is he who begins them today.  
**Safe Deposit Boxes**  
Space in our vault costs but \$2 a year. Our services are free.  
**THE FIRST STATE BANK**  
GOBLES, MICHIGAN  
"BANKING FRIENDSHIPS THAT ENIRCLE THE COMMUNITY"  


## Dr. West's Tooth Brush 50c

## Colgate's Tooth Paste 25c

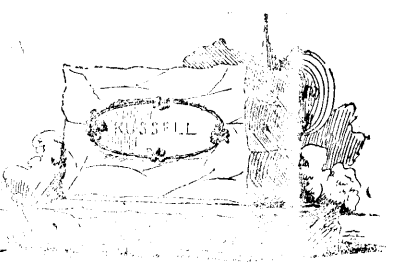
## Both Only 32c

While they last  
LEAVE FILMS HERE FOR DEVELOPING  
**McDonald's Drug Store**  
GOBLES, MICHIGAN  
The Best of Everything in Drugs

Eddie Cantor sings: "Tomatoes are cheaper--Potatoes are cheaper."  
**WE ALL KNOW THIS TO BE TRUE**  
BUT, alfalfa hay is a good price and alfalfa seed is CHEAPER--and now's the time to plant alfalfa. We handle ONLY Farm Bureau Seeds and this year we are able to offer MICHIGAN GROWN VARIETATED and also CERTIFIED GRIMM and HARDIGAN at the lowest prices in years. This is the first time that there has been enough Michigan grown seed to go around and Michigan Grown Seed is the BEST for our conditions.  
Mermash for your chickens Prices again reduced  
Our 16 per cent Mermash was formerly \$1.99 per 100 lbs and is now \$1.75. Eggs are low but the leading egg men are using Mermash and we know of one whose production is over 65 per cent. Use just one feed from the time the chicks are hatched until they are laying--that's Mermash. No use of using two or three feeds.  
**A. M. Todd Company**  
Mentha  
**W. J. Richards**  
Kendall

**Farm Bureau Products**  
Handled by  
W. J. Richards, Kendall  
Stanley Styles, Gobles  
The Mill, Bloomingdale  
A. M. Todd Co., Mentha  
L. Adsit, Otsego

Sinclair Regular Gasoline  
**Stepped Up**  
70 per cent higher test  
More mileage  
**Price Down**  
Walter Grauman  
Complete One-Stop Service Station

  
**Not Two Months to Decoration Day**  
Not too early to make your selections in Monumental Work and place your order  
**Prices Lowest in Years**  
Glad to have you call and see our stock  
Everything on the floor at big discounts for cash  
**Gobles Marble and Granite Works**

## THANK YOU

for real Responses to Last Week's Ad  
**THE NEWS**