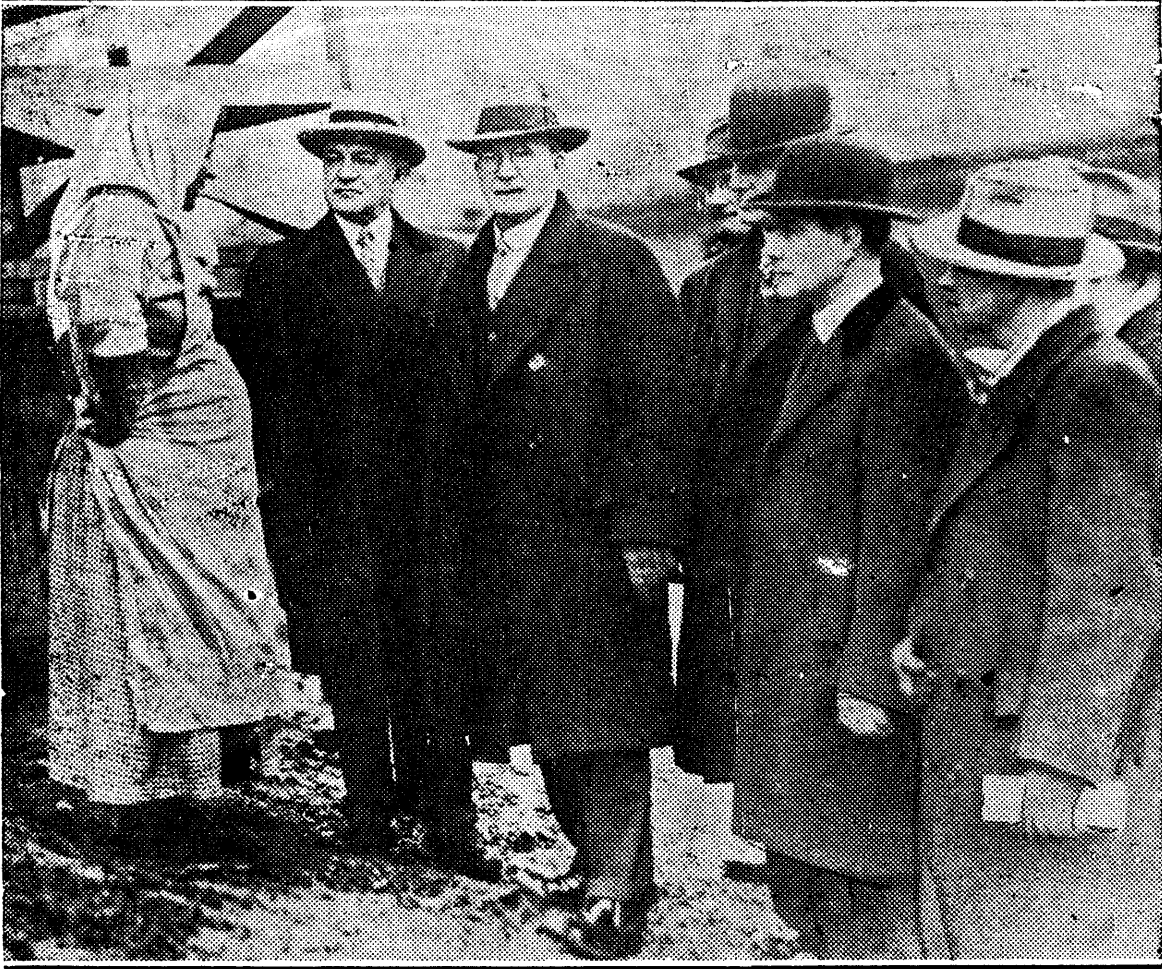


CAMERA NEWS

Senators View Conditions in Mine Strike Zone



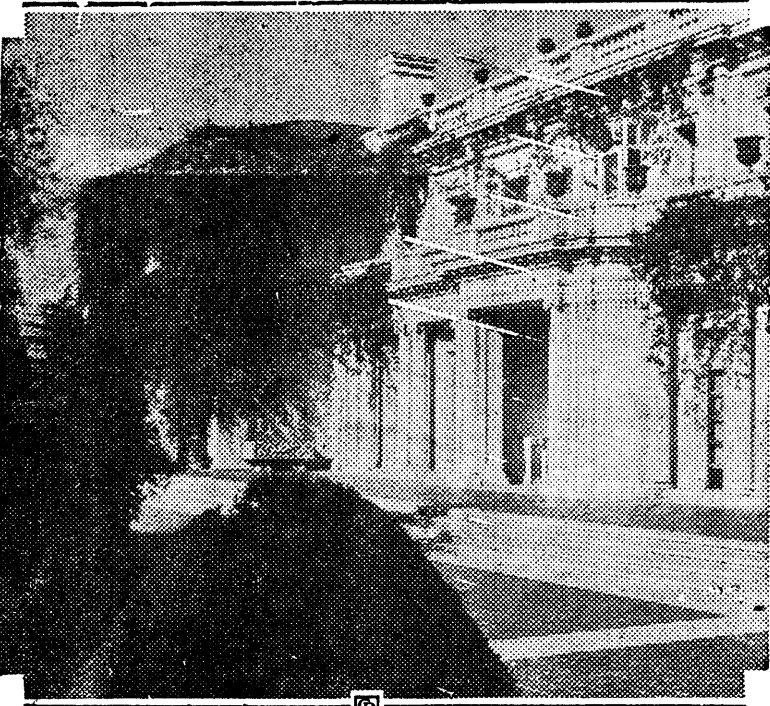
Members of the senate investigating committee, escorted by representatives of the United Mine Workers of America, are shown making a personal visit to the strike zone in the Pittsburgh district—questioning the wife of a strikebreaker. Left to right are Senators Robert F. Wagner of New York, Frank R. Gooding of Idaho, Burton K. Wheeler of Montana and W. B. Pine of Oklahoma.

Mary Astor and Director Wed



Mary Astor, noted film star, and Kenneth Hawkes, equally noted director, are shown at Hollywood, Cal., immediately after their wedding ceremony. The bridal gown sets something of a record for quantity of material.

Pioneer's Gift to Posterity



The opening of the Huntington library and art gallery at Pasadena, Cal., has consummated the wish of the late Henry E. Huntington, millionaire California pioneer and railroad builder, that his priceless collection of books, historical documents, manuscripts, art objects and famous paintings be forever held intact as his gift to posterity. The surrounding grounds of the Huntington estate will become a public botanical garden. Above, the front of Mr. Huntington's former home, which now is the art gallery.

MARKETING BY PARCEL POST DOES NOT COME UP TO EXPECTATIONS

The benefits and limitations of parcel post marketing of farm products as disclosed in a study of the operation of this form of selling over a period of 14 years are set forth by the bureau of agricultural economics in a publication, "Marketing Farm Products by Parcel Post," just issued by the United States Department of Agriculture.

When the parcel post law went into effect in 1913, says the author, Lewis B. Flohr, there were many and varied ideas as to the part it might play in marketing farm produce. Some persons declared that it would solve the farm marketing problem. There has been a continued and slowly increasing volume of marketing by this method, he says, but the quantity of farm products passing through the postal service has not reached the proportions expected by the enthusiasts, and is a relatively small part of the total marketings of farm products.

The department's new bulletin includes information on the parcel post regulations and requirements, the ways and means of making contact between producers and customers, the necessary business attitude and management of the business and the factors limiting parcel post marketing. The possibilities of parcel post marketing are discussed in detail for a long list of commodities, including fruits and vegetables, poultry, eggs, meats, butter, cheese, cream and milk, mushrooms, nuts and nut meats, syrups, honey, plants and other farm products.

Copies of the publication, which is designated as Farmers' Bulletin No. 1551, may be obtained from the Department of Agriculture, Washington, D. C.

54 Pair of Partridge From Czecho-Slovakia On Way to Game Farm

The state will experiment with Hungarian partridge in the hope that climatic and feeding conditions will permit planting the birds in Michigan.

P. S. Lovejoy, head of the game division of the conservation department, announced that 54 pairs are en route from New York. They were captured in Czecho-Slovakia and cost the state \$13 a pair. They will be placed on the Mason game farm.

Conservation officials were encouraged to make the experiment by the fact that birds planted in Ohio made their way north into Michigan.

How to Sample Soil

The proper method to sample soils for an acidity test is not to take a lot of small samples from a field and have each one tested separately. The method recommended by soil workers is to take a spade and bucket and sample the field in eight to twelve different places, depending upon the size of the field, advises R. P. Bartholomew, assistant agronomist, College of Agriculture, University of Arkansas. The sampling should be done in the following manner:

The spade should be pushed into the ground as far as possible and the first spadeful discarded. This leaves an almost perpendicular soil profile. Now take the spade and cut a 2-inch slice from the profile. Cut away the sides of the piece on the spade and put the center column in the bucket. Do this for eight to twelve locations.

After the samples have all been placed in the bucket, mix the soil thoroughly and take a good-sized handful for the acidity test and take it to your county agent or send it to the Department of Agronomy of your State Agricultural College, which will test it.

The reason a large number of small samples are not tested separately is because it would be impossible to apply the lime in the amount indicated for each location. The average amount needed by the whole field is what should be applied. This amount will be indicated correctly by the acidity test made on samples taken as directed. If there is a distinct variation in the soil in a field, a sample should be taken from each kind of soil.

Many dairy cows are undersized and are low producers because they did not get enough of the right kind of feed when they were young and growing. After a heifer has freshened and is producing milk it is difficult for her to make up the growth she failed to get as a younger animal because of poor feeding.

Michigan Cutover Land Load Heavy

An idea of the weight of Michigan's idle cutover land burden is revealed in the fact that 43 of the 83 counties in the state are receiving more money from the state for their support than they are giving the state in taxes.

"Every one of these counties contains a large percentage of cutover timber land, a part of which is tax delinquent," says Albert Stoll, Jr., writing in the Detroit News. He goes on to say:

"At the present time the state owns and controls 1,073,523 acres of land in Michigan, made up principally of denuded forest areas. There is approximately 5,000,000 acres in process of revision and more looms on the horizon. This is not a pretty picture, and it concerns every taxpayer in the state.

"It is the more prosperous industrial and agricultural counties that are asked to support these delinquent counties. They make possible their schools, their good roads, and in many cases, the maintenance of their township and county governments. No one has any desire to deprive these communities of these advantages nor to hold them responsible for past timber wastes and land abuses, but the situation cannot go on forever. Industry finds little use for these counties. Agriculture is not warranted from an economic standpoint, even if soils conditions were found acceptable.

"The tourist traffic will not prosper where lands lie idle, bleak and stripped of their trees or blackened by fire. It looks like forestry or nothing, and the sooner the state comes to this realization the better off it will be. Or perhaps it would be a good move to consolidate several of these bankrupt counties and cut down administrative costs and maintenance. This is perfectly feasible and offers one way out of the present dilemma."

State College Stops Legume Cultures Sale

Rapid increase in the number of cultures used for the inoculation of legume seeds by Michigan farmers has made a change necessary in the Michigan State College policy of manufacture and sale of these cultures, according to a statement by the bacteriological department at the college.

Expansion of the acreage of alfalfa and sweet clover in Michigan has been a contributory cause to the increased use of the cultures, and the laboratory facilities available at the college for the preparation of the cultures are now inadequate to supply the demand.

This year the cultures will be prepared by S. F. Edwards, in charge of legume cultures for the college, at his laboratory in Lansing. Mr. Edwards is a graduate of Michigan State College and will work under the supervision of the bacteriology department.

Unsterile dairy utensils is one of the chief means by which fresh milk is contaminated by bacteria. For this reason each piece of apparatus with which milk comes in contact may be an additional source of contamination. If dairy utensils are washed and sterilized properly, all well and good; but those not properly cared for are the direct cause of large numbers of bacteria in milk.

\$50 Reward

\$50 will be paid if R. V. Turner's Quick Relief Salve fails to relieve croup, head colds, catarrh, sore throat, headache, earache, eczema, itch, burns, risings, bruises, cuts, sores, rheumatic pains or piles. It is one of the most powerful, penetrating, germ-killing, pain-relieving and healing salves known to science. Removes corns in a few hours without pain; also seed warts. Large box by mail 60c. Agents wanted. Write for special terms. R. V. Turner, Box 1122, Montgomery, Ala.

WET BASEMENTS

Avoid illness from stagnant dampness.

We tell you how to fix them. No obligations. Write.

U. S. Waterproofing Co. Detroit, Mich.

FARM TENANT WANTED FOR Eaton County Farm

RENT or SHARES
Do not apply unless you know your business.
80 acres Fertile A No. 1 Farm Land.
Good 8-room house, big basement barn, on M-50 State Road near Eaton Rapids.

Write
GRACE HARPER, Florist
3948 John R. Street
Detroit, Mich.

We Teach STEAM ENGINEERING ELECTRICAL POWER and HOUSE WIRING

Detroit Practical School
23 East Jefferson, Detroit
W. B. MacDonald, M. E. I. C., M. I. E. S.
Gus Lender, M. A. I. E. E.; U. C. C. of E., N. A. S. E.

Record for Service



Crawling on his hands and knees to look under the dressing table or the bed for a fumbled collar button is not the experience of Charles Colbrunn, St. Louis, Mo. Colbrunn claims the record for the oldest collar button. He bought a pair of gold ones 41 years ago, and has been using them every day since.

Cautious Poet



ASBESTOS EDITION
SPECIALLY PRINTED FOR THE University Chicago Library

THE EARNEST JESTER IN LEWIS MCKENZIE TURNER

INSURED AGAINST ANTI-BRITISH BOOK BURNERS

The Salt House Press BALTIMORE, MARYLAND

Lewis McKenzie Turner, poet-jester of Baltimore, is a cautious man, you'll have to admit. After writing a poem caricaturing "Big Bill" Thompson, anti-British mayor of Chicago, he included it in an asbestos-bound collection to insure it against destruction.

Mecosta Farmers Get \$691,435 from Co-op For Cream Last Year

The Farmers' Co-operative Creamery at Big Rapids, one of the most prosperous creameries in this section, has elected the following directors: H. R. Derby, Langworthy, and David Leenhouts, Woodville, to succeed themselves. Five other directors, who hold over until next year, are John Noud of Stanwood, chairman of the board; J. D. Mitchell, Starwood; Arthur Jernstadt, Green township; Arthur Sullivan, Colfax township, and Edward Hammer of Reed City. B. A. McGill is the manager.

The creamery paid \$691,435 for cream in 1927 to dairy farmers to the number of 1,659 in this and adjoining counties. The manager's annual report shows they received \$75,000 more than the previous year.

The plant produced 1,682,572 pounds of butter the past year which sold for \$748,649.96, it is stated. Buttermilk powder net is also a source of revenue and cans are sold. The association's total income from all sources in 1927 came to \$766,166.98.

Much money for new equipment was spent, the largest single expenditure being \$7,405.19 for a milk drying machine. Three new trucks were purchased and a tile garage was built. The co-op has 300 or more members.

Ample sunlight in dairy barns, together with dryness and ample ventilation are potent agencies in preventing tuberculosis in the dairy herd—and other diseases as well. Another element of prevention lies in building up vitality and resistance to disease. Animals whose bodies are in a vigorous active condition throw off many infections which might otherwise cause serious illness.

See That Your Stock Is Consigned to

The Michigan Live Stock Exchange
Co-operative Commission Merchants
Detroit Stock Yards

Unusual Opportunity Wanted:

Man to work for our concern in this County, preferably with own car.

We have a Monopoly in which we invite you to participate that you may earn as high as THIRTY DOLLARS A DAY and own a share in this business.

Long time job all the year around. Full co-operation, given our men working in each County.

Our product sells on sight to every owner of an automobile. It is not an accessory but a new principle, and takes the place of article that is repeater, the consumption of which amounts to over 260,000,000 yearly.

Our product is unconditionally guaranteed for five years, but it is built to outlast the car.

Send full particulars about yourself in first letter to

321 Transportation Building, Detroit

All Bank and Trust Company Stocks Bought—Sold—Quoted

BANK STOCKS

We maintain good bids and offerings for all Michigan Bank and Trust Company Stocks.

Richman Phipps & Co.

Investment Bankers
936-9 Dime Bank Bldg.
Detroit, Mich.
Cadillac 532

Please send me list of stocks you are in the market for and stocks for sale. This places no obligation on me.

NAME
ADDRESS

Annual Township Election

Notice is hereby given that the next Annual Township Election for the Township of Bloomingdale, Precinct No. 2, County of Van Buren, State of Michigan at Gobles Opera House with in said township, on Monday, April 2, A. D., 1928

For the purpose of voting for the election of the following officers, viz:

Township—One Supervisor; one Township Clerk; one Township Treasurer; one Highway Commissioner; one Justice of the Peace, full one Member Board of Review, full term; Justice of the Peace, to fill vacancy, year; Justice of the Peace, to fill vacancy, year; term; Member of Board of Review, to fill vacancy year; Overseer of Highways, District No. Four Constables;

Relative to Opening and Closing of Polls

Act. 351—Part IV—Chapter VIII, Public Acts of 1925.

Section 1. On the day of any election the polls shall be opened at seven o'clock in the forenoon, or as soon thereafter as may be, and shall be continued open until five o'clock in the afternoon and no longer; Provided, that in townships the board of inspectors of election may, in its discretion, adjourn the polls at twelve o'clock noon, for one hour, and that the township board in townships and the legislative body in cities and villages may, by resolution adopted fifteen days prior to the election and published with the notice of the election, provide that the polls shall be opened at six o'clock in the forenoon, and may also provide that the polls shall be kept open not later than eight o'clock in the evening of the same day.

The polls of said election will be open at 7 o'clock a. m. and will remain open until 5 o'clock p. m. of said day of election, unless the Board of Election Inspectors shall, in their discretion, adjourn the Polls at 12 o'clock, noon for one hour.

A. V. Groves,
Clerk of said Township.

Dated March 1, A. D. 1927.

Annual Township Election and Presidential Primary Election

To the qualified electors of the Township of Pine Grove, Precincts No. 1 and 2 County of Van Buren, State of Michigan.

Notice is hereby given that the next ensuing Annual Township Election will be held at the Town Hall, Kendall, precinct No. 1 and Village Hall, Gobles, precinct No. 2, within said Township, on **Monday, April 2, A. D. 1928**

For the purpose of voting for the election of the following officers, viz:

Township—One Supervisor; one Township Clerk; one Township Treasurer; one Highway Commissioner; one Justice of the Peace, full term; Constables not to exceed four, member Board of Review, Overseer of Highways.

Also at which election the qualified voters of the several political parties shall have the opportunity on separate ballots provided for that purpose to express their preference for the office of President of the United States.

The name of any candidate for the office of President of the United States shall be printed on the official primary ballot solely upon the petition of their political supporters in Michigan, which petition shall be signed by not less than five thousand of the qualified voters of such political party, and said petition shall be filed with the Secretary of State on or before 12 o'clock noon, March First, nineteen hundred and twenty eight.

The nominating ballots as herein provided for shall be counted, canvassed and returned in the same manner as the names and petitions of the aspirants for

AUCTION!

To settle the estate of the late Mrs. Dr. Mann will sell 3 miles southeast of Gobles or 3 miles southwest of Kendall or follow main road south of Pine Grove

THURSDAY, MARCH 22

Commencing at 12:30 o'clock sharp, the following described property:

- | | | |
|---------------------------------------|-------------------------|--------------------------|
| 12 leather chairs | 3 stands | China closet |
| 2 leather arm chairs | 2 bookcases | Piano |
| 2 cushioned chairs | Lace curtains | Sideboard |
| Armed cushion chair | Kitchen cabinet | |
| 3 overstuffed chairs | Carpets and rugs | 4 antique bureaus |
| 2 sofas | Base burner | Victrola |
| 2 library tables | Oil stove | 2 kitchen tables |
| Medicine chest | 2 kitchen chairs | Morris chair |
| 3 cane seat chairs | Pier glass | Glass case |
| 3 single beds, springs and mattresses | Gold leaf antique clock | |
| 3 double beds and springs | Lamps | Dishes |
| 3 dressers | Chiffonier | Cooking utensils |
| Navajo rug | Wardrobe | |
| 2 writing desks | 2 commodes | |
| Filing cabinet | Office chair | |
| | | Also many other articles |

TERMS: All sums of \$10 and under, cash. Over that amount 6 months time will be given on good bankable notes with interest at 7 per cent. No property to be removed until settled for.

MANN. ESTATE

Col. J. R. VanVoorhees, Auct.

L. O. Graham, Clerk

the party nomination for the office of Governor are now required to be marked, filed, counted, canvassed and returned.

The Secretary of State shall furnish a copy of the official ballot to be provided for at such election, which shall have printed thereon the names of all candidates for the office of President of the United States as ascertained by nominating petitions on file with him; said names to be alternated on said ballot in accordance with the provisions of the law relating to Primary Elections.

Official Primary Election Ballot

Party
April 19, 1928
INSTRUCTIONS TO VOTERS
To vote for a person, whose name appears on the ballot mark an (X) in the square in front of the name of the person for whom you desire to vote. To vote for a person whose name is not on the ballot, write his name in the blank space provided for.

Vote for not more than one (1) person.
PRESIDENT OF THE UNITED STATES

- John Jones
- William Smith
- Thomas Ryan
- _____

SEPARATE BALLOTS for EACH POLITICAL PARTY are to be provided. The Candidate receiving the highest number of votes in the state at said election shall be declared to be the candidate and the choice of such political party for this state.

Relative to Opening and Closing of Polls

Act 351—Part IV—Chapter VIII, Public Acts of 1925

Section 1. On the day of any election the polls shall be opened at seven o'clock in the forenoon, or as soon thereafter as may be, and shall be continued open until five o'clock in the afternoon and no longer; Provided, that in townships the board of inspectors of election may, in its discretion, adjourn the polls at twelve o'clock noon, for one hour, and that the township board in townships and the legislative body in cities and villages may by resolution adopted fifteen days prior to the election and published with the notice of the election, provide that the polls shall be kept open not later than eight o'clock in the evening of the same day.

THE POLLS of said election will open at 7 o'clock a. m. or as soon thereafter as may be, and will remain open until 5 o'clock p. m. on said day of election,
H. G. KNOWLES,
Clerk of said Township
Dated Feb. 20, A. D. 1928.

Order for Publication

STATE OF MICHIGAN—The Probate Court for the County of Van Buren.

At a session of said Court, held at the Probate Office in the Village of Paw Paw in said County on the 1st day of March A. D. 1928.

Present: Hon. Wm. Killefer, Judge of Probate.

In the Matter of the Estate of Ruhama Corey, Deceased.

Mark Henion, executor of said estate, having filed in said court his petition, praying for license to mortgage the interest of said estate in certain real estate therein described.

It is Ordered That the 3rd day of April, A. D. 1928, at ten o'clock in the forenoon, at said probate office be and is hereby appointed for hearing said petition, and that all persons interested in said estate appear before said court, at said time and place, to show cause why a license to mortgage the interest of said estate in said real estate should not be granted;

It is Further Ordered, That public notice thereof be given by publication of a copy of this order for three successive weeks previous to said day of hearing, in the Gobles News, a newspaper printed and circulated in said county.

WM. KILLEFER, Judge of Probate.

A true copy. Mamie L. Shaefer, Register of Probate.

DAVID ANDERSON

ATTORNEY-AT-LAW

PAW PAW, MICHIGAN

Office in Longwell Block

DR. S. B. GRAVES

VETERINARIAN

Phone 77 / Allegan, Mich.

Mark every grave

Patronize our advertisers

Registration Notice for All Elections

Monday, April 2, A. D. 1928

To the Qualified Electors of the Township of Pine Grove, precincts No. 1 and 2, County of Van Buren, State of Michigan:

Notice is hereby given that in conformity with the "Michigan Election Law," I, the undersigned township clerk, will, upon any day, except Sunday and a legal holiday, the day of any regular or special election or primary election, receive for registration the name of any legal voter in said township not already registered who may apply to me personally for such registration. Provided, however, that I can receive no names for registration during the time intervening between the second Saturday before any regular, special or official primary election and the day of such election.

The last day for general registration does not apply to persons who vote under the absent voter's law.

MARCH 24, 1928, LAST DAY

for General Registration for this election I will be at Postoffice, Kendall, March 10 and at Fay Osmun's barber shop in Gobles on March 17, 1928 from eight o'clock a. m. until five o'clock p. m. on each said day for the purpose of reviewing the registration and registering such of the qualified electors in said township as shall properly apply therefor.

Dated Feb. 20, A. D. 1928.

H. G. KNOWLES,
Township Clerk.

REGISTRATION NOTICE FOR ALL ELECTIONS

MONDAY, April 2, A. D. 1928

To the qualified electors of the township of Bloomingdale, Precinct No. 2, County of Van Buren, State of Michigan.

Notice is hereby given that in conformity with the "Michigan Election Law", I, the undersigned Township Clerk, will, upon any day, except Sunday and a legal holiday, the day of any regular or special election or primary election, receive for registration the name of any legal voter in said Township not already registered who may **Apply To Me Personally** for such registration. Provided, however, that I can receive no names for registration during the time intervening between the Second Saturday before any regular, special, or official primary election and the day of such election.

The last day for General Registration does not apply to persons who vote under the Absent Voters Law. (See Registration by Affidavit.)

March 24, 1928 — LAST DAY For General Registration by personal application for said election.

Notice is further hereby given that I will be at my office on

MAR. 10 AND MAR. 17, 1928

From 8 o'clock a. m. until 8 o'clock p. m. on each said day for the purpose of **Reviewing the Registration and Registering** such of the qualified electors in said Township as shall properly apply therefor.

The name of no person but an **Actual Resident** of the precinct at the time of registration and entitled under the constitution, if remaining such resident, to vote at the next election, shall be entered in the registration book.

Registration by Affidavit

Sec. 10—Registering of Electors: Regular Session of 1925—Any absent voter, as defined in this act, whose name is not registered and who shall claim the right to vote by absent voter's ballot at any election or primary election, may at the time of

AUCTION!

Of Household Goods

As am working in Battle Creek will sell at first house north of Reigle's store in Gobles

SATURDAY, MARCH 17, 1928

Commencing at 12:30 sharp, the following described property:

- 3 nice beds with springs and mattress
- Feather beds
- Large quantity of quilts
- Large quantity of sheets
- 2 dressers and commodes
- Bookcase
- Nice dining table
- Oak center table
- 2 large leather rockers
- 2 wooden rockers
- 6 nice dining chairs
- 9x12 rug
- Several smaller rugs
- Silvertone phonograph and a quantity of records

- Couch
- Telephone
- Kalamazoo range
- Several lace curtains
- 4-burner oil stove
- Drop leaf table
- Kitchen cabinet
- Wardrobe, good as new
- New oil heater
- Plenty of dishes, jars, cans
- Several lamps, clocks, brooms, oil cans, looking glasses, pictures, vases
- Milk safes
- Saws
- Several pillows
- Couch cover
- Half tree
- Several lamps
- Some garden tools
- Many other articles too numerous to mention

TERMS: All sums of \$10 and under, cash. Over that amount 6 months time will be given on good bankable notes with interest at 7 per cent. No property to be removed until settled for.

JOHN BANKER, Prop.

J. R. VanVoorhees, Auct.

L. O. Graham, Clerk

making application for absent voter's ballot, present to the township clerk an affidavit for registration which shall be in substantially the following form:

Affidavit for Registration
State of Michigan, County of _____
_____ ss. I, _____
being duly sworn, depose and say that I am a citizen and duly qualified elector of _____ Precinct of the Township of _____ in said County of _____ and State of Michigan; that my postoffice address is No. _____ Street (or R. F. D. No. _____) P. O. _____, that I am not now registered as an elector therein, and that I am voting by absent voter's ballot at the election (or primary election) to be held upon the _____ day of _____, 18____, the application for which ballot accompanies this application; that I make this affidavit for the purpose of procuring my registration as an elector in accordance with the statute; that I make the following statements in compliance with the Michigan Election Law: Age _____ Race: _____ Birth place _____ date of Naturalization _____ I further swear or affirm that the answers given to the questions concerning my qualifications as an elector are true and correct to the best of my knowledge and belief.

Signature _____
Taken, subscribed and sworn to before me, this _____ day of _____ A. D. 192____

Notary
My Commission expires _____
Note—If this acknowledgement is taken outside of the State, the Certificate of the Court that the person taking the acknowledgment is a notary must be attached.
Registration of Absentee by Oath
Section 9.

If any person whose name is not registered shall offer and claim the right to vote at any election or primary election, and shall under oath state that he or she is a resident of such precinct and has resided in the **Township Twenty Days** next preceding such election or primary election, designating particularly the place of his or her residence that he or she possesses the other qualifications of an elector under the constitution; and that owing to the sickness or bodily infirmity of himself or herself or some member of his or her family, or owing to his or her absence from the Township on public business or his or her own business, and without intent to avoid or delay his or her registration, he or she was unable to make application for registration on the last day provided by law for the registering of electors preceding such election or primary election, then the

name of such person shall be registered, and he or she shall then be permitted to vote at such election or primary election. If such applicant shall in said matter willfully make any false statement, he or she shall be deemed guilty of perjury, and upon conviction, be subject to the pains and penalties thereof.
Provision in Case of Removal to Another Precinct
Section 11.

Any registered and qualified voter who has **Removed from One Election Precinct of a Township** to another election precinct of the same Township shall have the right, on any day previous to election, or primary election day, on application to Township Clerk, to have his or her name transferred from the registration book of the precinct from which he or she has removed to the registration book of the precinct in which he or she then resides. Such elector shall have the right to have such transfer made on any Election, or Primary election day by obtaining from the board of inspectors of such election or primary election of the precinct from which he or she has removed a **Certificate of Transfer** and presenting the said certificate to the **Board of Election Inspectors of the Precinct** in which he or she then resides.

H. W. TAYLOR, Justice

Dated Feb. 20, A. D. 1928.

Good News! Big News! Joyful News!

**Butterfield's 22 Anniversary in Michigan Week--
March 18 to 24**

Make Arrangements Now to Celebrate in Kalamazoo

STATE

One great week of stage and screen entertainment
A mammoth augmented bill of
Keith-Filbee Vaudeville
and
SUPER PHOTO PLAY ATTRACTIONS
plus other added State novelties
"The State welcomes its suburban friends and neighbors to this gala week of celebration."

CAPITOL

Two extraordinary photo-play productions for this week of exceptional entertainment.
Sun., Mon., Tues., Wed.
The "it" girl at it again,
Clara Bow
in
"RED HAIR"
By ELINOR GLYN
Thur., Fri., Sat.
Richard Barthlemess
in Broadway's most famous drama of the underworld
"THE NOOSE"
Also extra added attractions

Regent

THE
Wright Players
will celebrate the Butterfield 22nd Anniversary in Michigan Week with
"SPOOKS"
The mystery thriller

Special Anniversary FEATURES AUGMENTED PROGRAMS

Easter Lily Chapter No. 230, O.E.S.
Meetings First Tuesday of Each Month
Visiting members always welcome
LAURA WAUCHEK, W. M.
Elizabeth Upham, Sec.

Hudson Lodge No. 326, F. & A. M.
Meetings the First Thursday evening of each month
Visiting Brothers Always Welcome
EARL NEWCOMB, W. M.
Chester H. Merrifield, Sec.

Presidential Primary Election
Notice is hereby given that a Presidential Primary Election will be held on **Monday, April 2, A. D. 1928** at the place of holding the Annual Township Election in the township of Bloomingdale (Precinct No. 2).

At which election the qualified voters of the several political parties shall have the opportunity on separate ballots provided for that purpose to express their preference for the office of President of the United States.

The name of any candidate for the office of President of the United States shall be printed on the official primary ballot solely upon the petition of their political supporters in Michigan, which petition shall be signed by not less than five thousand of the qualified voters of such political party, and said petition shall be filed with the Secretary of State on or before twelve o'clock noon, March First, nineteen hundred and twenty eight.

The nominating ballots as herein provided for shall be counted, canvassed and returned in the same manner as the names and petitions of the aspirants for the party nominations for the office of Governor are now required to be marked filed, counted, canvassed and returned.

The Secretary of State shall furnish a copy of the official ballot to be provided for at such election, which shall have printed there in the names of all candidates for the office of President of the United States as ascertained by nominating petitions on file with him; said names to be alternated on said ballot in accordance with the provisions of the law relating to Primary Elections

Official Primary Election Ballot

Party
April 19...
INSTRUCTIONS TO VOTERS
To vote for a person whose name appears on the ballot mark an (X) in the square in front of the name of the person for whom you wish to vote. To vote for a person whose name is not on the ballot, write his name in the blank space provided for.
Vote for not more than one (1) person.
PRESIDENT OF THE UNITED STATES

- John Jones
- William Smith
- Thomas Ryan
-

Separate Ballots for Each Political Party are to be provided. The Candidate receiving the highest number of votes in the state at said election shall be declared to be the candidate and the choice of such political party for this state.
The polls of said election will be open at 7 o'clock a. m. and will remain open until 5 o'clock p. m. of said day of election, unless the Board of Election Inspectors shall, in their discretion, adjourn the Polls at 12 o'clock, noon for one hour.
H. W. TAYLOR, Justice
Dated Feb. 20, A. D. 1928.

SUBSCRIPTION PRICE \$1.50 A YEAR
ADVANCE IN CANADA, \$2.00.
2 months, in advance50
4 months, in advance 1.00
6 months, in advance 1.50

MY POROUS KNIT
This is not an advertisement,
It's a bit of mother wit;
It's a workman's conception
Of how things had ought to fit.
I am speaking of my underwear
That helps me do my bit,
And those forty thousand air holes
In my Porous Knit.

I wear them in the summer time
When coming through the rye;
I wore them in the engine room,
Where the temperature was high;
I wear them in the berry patch
Where everything is wet:
And those forty thousand air holes
In each one a drop of sweat.
Oh! the Knit, the Knit,
The Porous Knit,
Those airable, non-tearable
Porous Knit.
Now the Venus De Milo
Has always made a hit;
But she'd look a darn sight better
In a suit of Porous Knit.
Arthur Nash.

Methodist Church
Sunday School, 10:00 o'clock.
Morning Worship, 11:00
Epworth League, 6:00
Evening Services, 7:00
Prayer meeting Thursday eve at 7:00
You are invited to each of these services.
Rev. S. W. Hayes.

Regent Theater Allegan

Good roads lead to Allegan. We show the best moving pictures made. Always up-to-date. Vaudeville Saturday and Sunday. Matinee Saturday. Look over our program. Evenings 7 and 9 o'clock
COMEDY NEWS CARTOONS

Thurs. and Fri., March 15-16
George Bancroft in
Showroom
COUNTRY STORE FRIDAY

Sunday, March 18
Estelle Taylor and Lowell Sherman in
The Whip Women
ALSO VAUDEVILLE

Mon., Tues., March 19-20
The community players presentation
The Haunted House
Matinee Monday

Saturday, March 17
Milton Sills in
The Valley of Giants
Serial No. 3 MASKED MENACE
Matinee only
VAUDEVILLE

Wed., Thurs. March 21-22
Bebe Daniels in
Feel my Pulse

Let Us Help You Buy More Groceries

with our prices. Starting Thursday we are going to give you something that you need with every cash purchase of one dollar or more.

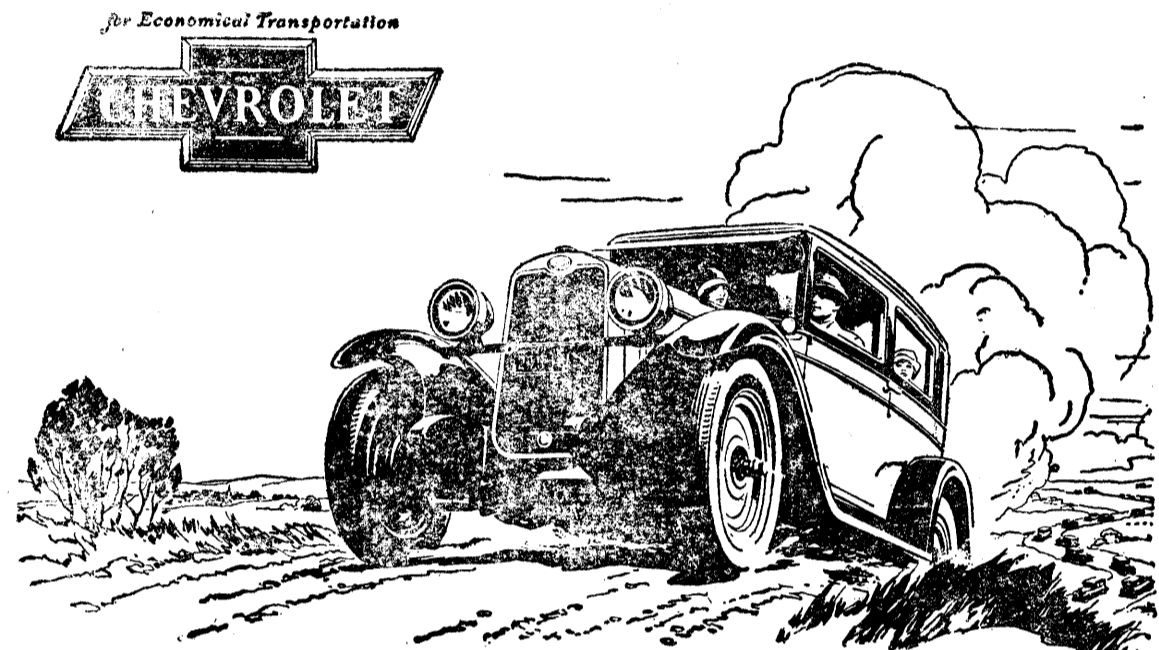
BRING YOUR CREAM TO THE SERVICE CREAM STATION FOR SATISFACTION
You know we always pay the best prices for eggs, cream and butter
RUELL'S CORNER STORE

Report of the Condition of the First State Bank

at Gobles, Michigan, at the close of business Feb. 28, 1928, as called for by the Commissioner of the Banking Department.

RESOURCES		LIABILITIES	
Loans and Discounts, viz:	Commercial \$92,421.84	Savings \$30,638.91	
d Items in transit	2068.15		
a Real Estate Mortgages	48,641.74		
g Other Bonds	47,637.72	50,737.50	
Totals	142,133.71	130,018.15	272,151.86
Reserves, viz:			
Due from Federal Reserve Bank			
Cash and due from banks in reserve cities	18,170.65	5,000	
U. S. Bonds and Certificates of indebtedness carried as legal reserve in Savings Dept. only		12,950	
Totals	18,170.65	17,950	36,120.65
Combined Accounts, viz:			
Overdrafts			117.25
Banking House			4,965.63
Furniture and Fixtures			9,000.00
Other Real Estate			2,688.74
Customer's Bonds Deposited with Bank for Safekeeping			10,200.00
TOTALS			335,224.13
Capital Stock paid in			\$ 20,000
Surplus Fund			12,000
Undivided Profits, net			7,566.50
Dividends Unpaid			
Reserved for taxes, interest, depreciation, etc.			
Bond Adjustment			
Commercial Deposits, viz:			
Commercial deposits subject to check	68,113.22		
Demand Certificates of Deposit	73,192.06		
State Moneys on Deposit			
Totals	141,305.28		141,305.28
Savings Deposits, viz:			
Book Accounts, subject to Savings by laws	76,213		
Certificates of Deposit, subject to Savings by laws	67,939.35		
Totals	144,152.35		144,152.35
Customers' bonds deposited with Bank for Safekeeping			10,200
Other liabilities, dividends			
TOTAL			\$335,224.13

State of Michigan, County of Van Buren, ss.
I, L. O. Graham, Cashier of the above named bank do solemnly swear, that the above statement is true to the best of my knowledge and belief and correctly represents the true state of the several matters therein contained, as shown by the books of the bank.
L. O. GRAHAM, Cashier.
Subscribed and sworn to before me this 10th day of March 1928.
Edna L. Davis, Notary Public.
My commission expires April 23, 1928.
Correct Attest: H. B. ALLEN,
ANSON D. PEASE,
M. L. WILMOT,
Directors.



**Overwhelming Endorsement -
a Quarter Million
New Chevrolets on the
Road since Jan. 1st**

Nine million people saw the Bigger and Better Chevrolet the first three days following its public presentation! Thousands have been delivered to buyers every day since! There are a quarter million now on the road! And its popularity is increasing every day because it is smoother, more powerful and more beautiful - easier to drive and more comfortable - and lower in price! Never in history has any new Chevrolet model been so enthusiastically received - because no new model has ever represented a more amazing revelation in beauty, performance and quality! Come in - drive this sensational new car. Learn why it is everywhere hailed as the world's most luxurious low-priced automobile.

Harrelson Auto Sales Co.
GOBLES, MICHIGAN

QUALITY AT LOW COST

New Paw Paw THEATER PROGRAM

Thursday, March 15
Special Benefit for Boy Scouts
Fred Thompson in
Don Mike

Friday, March 16
Corinne Griffith in
Classified
ALSO NEWS AND COMEDY

Saturday, March 17
Tom Tyler in
Red Hot Hoofs
Also Cartoon and Comedy

Sunday, March 18
Cheaters
ALSO NEWS AND COMEDY

Mon. Tues., March 19-20
Her Honor the Governor
With Pauline Frederick

Wednesday, March 21
Kid McCoy in California

Big Special Attraction
Ben Hur - March 26, 27, 28

ALBERT J. FOELSCH, M. D.
Physician and Surgeon.
Office at residence across from Baptist church
Both phones GOBLES, MICH

G. M. RILEY, M. D.
PHYSICIAN AND SURGEON
Office Hours: 1 to 3 p. m.
Except Sundays
Office at residence Call either phone
Gobles, Michigan

DR. R. E. ALLEN
Dentist
GOBLES, MICHIGAN
Hours: 8 to 12 and 1 to 5 p. m. except
Thursday afternoons
Or by appointment

Gobles and Atamo Nurseries
Were both inspected June 29 and Sept 30.
H. E. Powell, State Com'r

Bloomingdale School Carnival

March 16 and 17
Featuring
Style Show 1865-1928
Dwight Hewitt Famous Shooting Act
Special Motion Picture Comedy
Musical Comedy
Boxing and Wrestling

17 OTHER CONCESSIONS
Including One-Armed Fiddler
who will play all request numbers

This carnival promises to be the best ever seen

Hudson & Son

IT PAYS TO PAY CASH

NEW SILK DRESSES

A new shipment just in. Only 15 in the lot, so they will go fast. Get yours today.

NEW SPRING GOODS

are coming in fast. We do not overstock so better watch our store close for values

Ask About Bread Boxes for Wrappers from Gobles Bread

SATURDAY SPECIAL

10 POUNDS SUGAR... 58c
With every cash purchase of \$2 in our Dry Goods, China and Shoe Departments

"The Store of New Things"

INSIST ON HUDSON QUALITY
IN ALL GOODS IN OUR LINES

In Taking Over Our Business in Gobles

we took no USED CARS and we must have some. If you are considering changing cars later do it NOW as your car will never bring as much in trade as now.

Chevrolets and Oldsmobiles
Our Specialties

HARRELSON AUTOSALES CO.
BUY HERE EASY TERMS SATISFACTION

OPEN WEDNESDAY AND SATURDAY EVENINGS



REIGLE'S The Store of many bargains GARDEN SEEDS

It will soon be time to plant gardens. Better get your seeds now while we have a full selection

Thursday, Friday and Saturday Cash Specials

Bulk Peanut Butter, best of quality per pound	20c	KELLOGGS CORN FLAKES	
6 boxes Diamond Matches, full count, best of quality, per carton	21c	Large size for.....	11c
2 pkgs Mince-meat, Armour's Very-best, for.....	25c	Small size for.....	8c
Kellogg's All Bran, best as a cereal, best for cooking	21c	Cream of Wheat, an excellent breakfast food. Per pkg	24c
4 bars Palmolive Toilet Soap, best for the complexion	27c	Shredded Wheat, the original all wheat biscuit. Per pkg	10c
		2 lb. package Seedless Raisins for	20c

Not the CHOICE but the BEST Fresh Fruits and Vegetables at all times. THERE'S A DIFFERENCE

TRACTOR SCHOOL

Cash Supply Store

Friday, March 23

Come in and see a

JOHN DEERE TRACTOR

in all its parts so that you may know just how to use it to get the best possible results with the least expense

Don't Miss This Event

whether you are in the market for one or not, or if you already have one.

CASH SUPPLY STORE

H. W. TAYLOR

Assorted Crepe Dresses

Big shipment of beautiful patterns just received. Popular designs from \$6.60 to \$9.95

We are Showing the New Paradise and Queen Marie Hats

New Straws, Silks, Felts and Combinations in the novel and interesting styles of the moment, from \$3.95 up.
Big bargains in Blazers, Overcoats, Wool Pants and All Winter Goods.

BIG WEEK OF SPECIAL BARGAINS STARTING TODAY

Good bulk coffee.....	30c	Gingham Aprons.....	79c
Matches.....	4c	New Ruffle Curtains, pair.....	85c
Pop corn.....	8c	Rayon Silk Bed Spread.....	\$2.98
3 pkgs Macaroni.....	23c	Good Overalls.....	\$1.19
Small Milk 5c. Large.....	10c	2 pair Canvas Gloves.....	25c
Raisins.....	13c	Large Climaine.....	24c

Ask Us About Egg Prices

Fresh Fish Today

The good kind you like so well

Try Our New Cottage Cheese

LOHRBERG BROS.

Meat Market

Do Not Take Chances on Your Seed This Spring

The Michigan Farm Bureau has no axe to grind...they are simply a farmers organization trying to get you the best seed in the world for your conditions. Why Not Use Farm Bureau Seed?

There is no better seed.
We carry a full line of Farm Bureau Poultry Feeds...they are likewise the very best to be had. The Farm Bureau works with the College at Lansing to produce the best feeds obtainable and you get the benefit.
We have all kinds of feed for laying hens and for starting little chicks, also a full line of Dairy Feeds...Milk-maker and also HEXITE, the Kellogg wonder feed.
See us for feed of all kinds...we carry COLUMBUS OAL—the cream of soft coals.
Have you calves to raise and do you want to sell your milk? Then use JERSEE, the complete food for calves and you do not need to use ANY cows milk with it either.

W. J. RICHARDS, Kendall
Feed Grinding Every Saturday

Steel Canopy to Fit 3-Burner Stove FOR SALE
FAVORITE ICE CREAM
Better than ever. Gallons, quarts, pints and bricks. Large orders, short notice.
LUNCHES AND MEALS
WHITE LUNCH

Another Car of Ground Barley and Oats Just In \$2 PER CWT.

Start Your Chickens in on PURINA STARTENA
You cannot give them a better start

The Gobleville Milling Co.

"The Mill With the Checkerboard Front"

W. J. Davis, Mgr.

Both Phones

Gobles, Michigan

for a Square Deal---

The Square Deal Cash Cream Station
Van Ryno

Gobles Opera House
Friday Evening, March 23

The Senior Class of Gobles High School presents

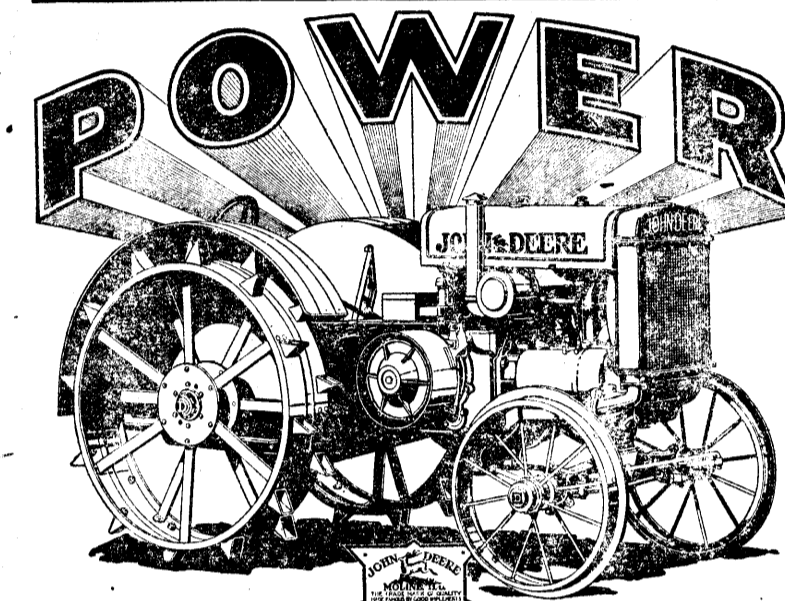
"Getting Rid of Eppie"

A Comedy in three acts

CAST OF CHARACTERS
Mrs. Elizabeth Featherby
Jean, her daughter
Katherine (Kay), her daughter
Miss Eppie Perkins, cousin of Featherby's
Mrs. Templeton-Tweed
Mr. Peter Crosby
Sir Harry Gwen
Thomas, a footman
Lucy, a maid
Elsie, a maid
Faith Winters
Marion Tyehsen
Maybert Camfield
Madge Coffinger
Ruby Graves
Lloyd Hoffman
J. Arthur MacGregor
Thomas Way
Alberta Sage
Marguerite Nash

SYNOPSIS

Time—The present
Act I. The Featherby's morning room.
Act II. The same.
Act III. A room at Mrs. Templeton-Tweed's.
SPECIAL NUMBERS BETWEEN EACH ACT



Farmers who know the sturdy John Deere marvel at its great power. They see this compact, light weight tractor—hundreds of pounds lighter—out-performing larger, heavier tractors in difficult conditions in the field and at the belt.

Here's the Reason:

This 15-27 H. P. tractor weighs only 4,000 pounds—hundreds of pounds lighter than other tractors of the same rating; power ordinarily wasted in moving excess weight in the field is applied to the drawbar of the John Deere.
The John Deere is hundreds of parts simpler—it's the tractor of fewer and sturdier parts. Fewer moving parts reduce friction, one of the biggest power thieves in many other tractors. Belt pulley is mounted directly on crankshaft—no power loss.
All operating parts of the John Deere are automatically oiled and completely housed in a dust-proof case—oil is positive, dust and sand cannot get in to cause friction, loss of power, and undue wear.
John Deere one-piece frame holds all units in permanent alignment.
The great power of the John Deere will surprise you. Drop in and see this sturdy tractor next time you are in town. Let us arrange a demonstration.

Cash Supply Store



At this Store You Get QUALITY AND SERVICE

Why Buy a 1927 Tire in 1928?

Don't be old-fashioned in tire buying? The Goodyear Balloon with the new-type All-Weather Tread specially-designed for balloon tire performance is the popular choice for 1928.

This tire—"The Greatest Tire in the World"—will revise all your ideas about balloon tires

Its tread insures slow, even wear—no more cupping, "pot-holing" and such troubles. It gives positive, gripping traction. It is a real non-skid tread.

You won't be satisfied with an out-of-date tire, when you see this one!

Come in and see it—Now!

J. C. Gamboe, Inc.

Gobles

Michigan

Open Wednesday and Saturday evenings

Fence Posts Roll Roofing

SASH AND DOORS
General Lumber and Building Material
ESTIMATES FURNISHED

J. L. Clement & Sons

You Get Two Kinds of Interest Here

They are: Interest on your deposits and our personal, helpful interest in your every transaction.

THE FIRST STATE BANK

GOBLES, MICHIGAN

"BANKING FRIENDSHIPS THAT ENIRCLE THE COMMUNITY"

Tally cards

Bridge pads

Bridge Sets

Playing cards

New ones

McDonald's Drug Store

GOBLES, MICHIGAN

The Best of Everything in Drugs

3 Loaves

Good Bread

25c

Why Pay More?

Quality Bakery

Herman R. Schowe

Dairymen Attention!

Do you want the best feed for your DOLLAR?

If you have plenty of Alfalfa hay and are not using much home-grown grain, then use the wonder feed—Kellogg's HEXITE.

We have sold three carloads of this feed in the past month and more ordered. We believe that it is an honest fact that more HEXITE is being sold than all other dairy feeds in this territory. It contains:

Linseed Meal Malt Feed Hominy Feed Wheat Bran
Cooked Bran Feed Cottonseed Meal Molasses Salt
Oatmeal Mill By-Products

The State of Michigan tested 4 samples of this feed at 4 different towns and it tested 16.4, 18.2 and two samples 16.8 although you pay for only 16 per cent.

It is selling for \$2.25 or less per 100 lbs. You may obtain it at Mrs. Phillips at Alamo, at Mentha, at W. J. Richards, Kendall, at Mrs. Beals at Gobles and at the Mill at Bloomingdale.

All these dealers report that the sales are greater than all other dairy feed combined. There MUST be something to it.

Remember it is made by KELLOGG of Battle Creek...one of the largest concerns in the country.

It is a most excellent feed for ewes after lambing and for pigs. We have even fed it to our own horses this winter with good results.

A. M. Todd Company, Mentha

CAR LOT, WHOLESALE AND RETAIL DISTRIBUTORS

Bishop Feed Line Retail Store

Located at W. H. Ferguson's Residence in Gobles

Watch this space for a list of our new low feed prices

Baby Chicks

Let us supply your wants in this line. Low prices. Quality stock and satisfactory service

Far ahead Low-slung

... yet Buick clears the ruts and gives head-room as well



SEDANS \$1195 to \$1995
SPORT MODELS \$1195 to \$1525
All prices f. o. b. Flint, Mich., government tax to be added. The G.M.A.C. finance plan, the most desirable, is available.

Buick's remarkable combination of modish, graceful beauty—maximum head-room—and ability to clear the ruts—is the direct result of the Buick double-drop frame.

This brilliant advancement, pioneered by Buick months ago, places Buick far ahead of other cars in beauty, safety and all-around adaptability.

Forburger Bros. Paw Paw, Mich.

Farm Implements

Harrows Disc Harrows Walking Plows
Sulky Plows Cultipackers Mowers
Hay Loaders Rakes
Cultivators, Walkers Cultivators, Riders

In fact anything you want. Buy now and be ready when she opens

Wood! Wood! Wood! Wood!

Beach and Maple Body, \$4.50 per cord

R. M. CURTISS & CO.