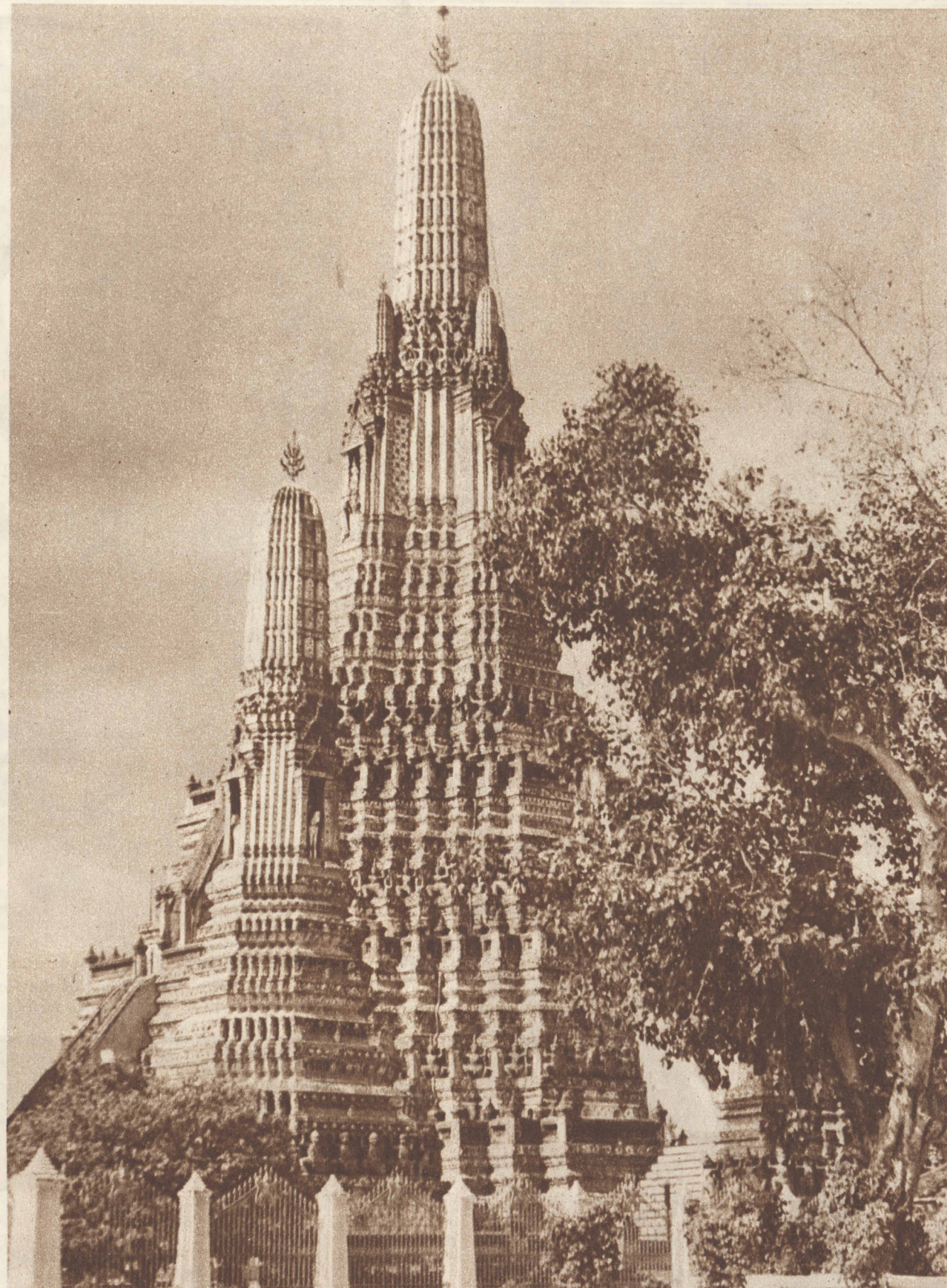




LIFE IN THE TREE TOPS—The sons of the British artist, G. K. Thompson, build a playhouse on their father's estate near Chalfont St. Peter, Bucks, England.

(Photo from the Chicago Tribune's London bureau.)

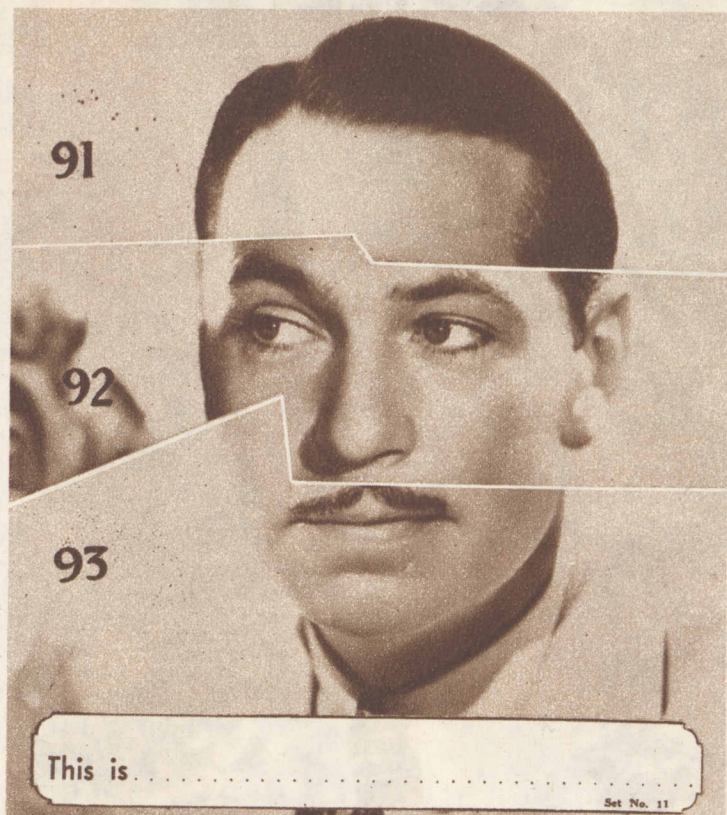


BUDDHIST TEMPLE IN BANGKOK, SIAM.

(Associated Press photo.)

\$10,000 IN CASH PRIZES *for solving* MISPLACED FACES *OF* MOVIE STARS

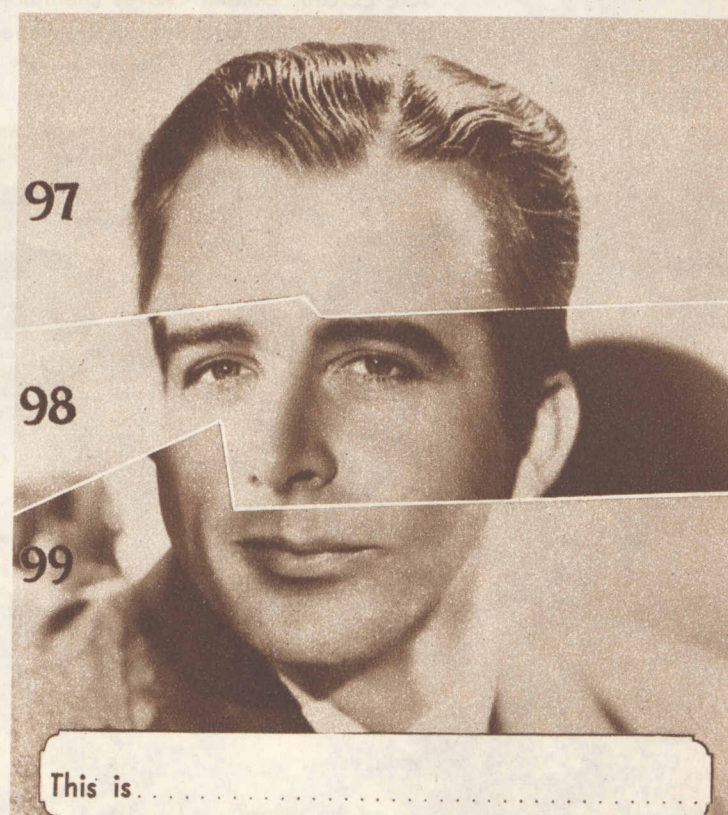
Set No. 11



CLUE: The forehead is that of an actor who has appeared opposite a famous child star. The eyes and nose are those of an actor who is over six feet tall. The mouth and chin are those of an actor greatly admired by the ladies. (Chicagoans can see him this week at outlying Balaban & Katz Theatres.)



CLUE: The forehead is that of a star whose first and last names contain the same number of consonants. The eyes and nose are those of a star who has been cast in many romantic roles. The mouth and chin are those of a tall, handsome actor. (Chicagoans can see him this week at outlying Balaban & Katz Theatres.)



CLUE: The forehead is that of an actor who has starred in many pictures. These eyes have thrilled many a feminine heart. The mouth and chin are those of an actor of versatile ability. (Chicagoans have seen him recently at a loop Balaban & Katz Theatre.)

THE PRIZES:

1st Prize.....	\$2,000.00
2nd Prize.....	1,000.00
3rd Prize.....	500.00
Next 5 Prizes \$200 ea....	1,000.00
Next 10 Prizes 100 ea....	1,000.00
Next 20 Prizes 50 ea....	1,000.00
Next 40 Prizes 25 ea....	1,000.00
Next 150 Prizes 10 ea....	1,500.00
Next 200 Prizes 5 ea....	1,000.00
428 PRIZES	
TOTALING.....	\$10,000.00

★ ★
GET SET NO. 12
IN NEXT
SUNDAY'S TRIBUNE

★ ★
THE STARS WHOSE
PHOTOGRAPHS ARE
USED IN THIS CONTEST
APPEAR REGULARLY IN
PICTURES AT BALABAN
& KATZ THEATERS!...
SEE
THEM THERE!

THE RULES

WHO CAN ENTER: Every man, woman, boy and girl is eligible, regardless of residence, excepting employees of the Chicago Tribune, employees of Balaban & Katz theaters and members of their families.
WHAT TO DO: The pictures must be cut apart, assembled and pasted together. Below each picture must be written the name of the star. You may trim off rough edges if you wish to make perfect rectangular pictures. Three pictures will appear each Sunday in the Chicago Sunday Tribune until 36 pictures have appeared. Each set of three pictures, when cut apart and assembled properly, will make complete portraits.

WHERE TO SEND ENTRIES: DO NOT send in pictures one at a time. Hold all pictures until you have the complete set of 36. Then send them to "Misplaced Faces," Chicago Tribune, Post Office Box 1539, Chicago, Illinois. No entry will be returned. All entries must be in by midnight 15 days after Set No. 12 is published. Each entry must be sent by first class mail, postage prepaid. Entries with insufficient postage will be returned by the Post Office Department.

THE PRIZES: The Chicago Tribune will pay 428 cash prizes totaling \$10,000 to the persons who send in the nearest correctly solved and nearest complete sets of pictures in accordance with these rules. See prize list above. You do not necessarily have to solve each of

the 36 pictures correctly to win. Prizes will be paid to the persons whose entries rank highest. Elaborate entries are not necessary. Just make your entry simple and neat.

JUDGING: Entries will be judged by a committee appointed by the Chicago Tribune. Entrants agree to accept this committee's decision as final. Accuracy in assembling and naming the pictures, and neatness of entry will be the sole determining factors. In case of ties, duplicate awards will be paid.

NOTHING TO BUY: It is not necessary to buy the Chicago Tribune to compete. You may copy or trace the pictures. The Tribune may be examined at any of its offices or at public libraries free of charge.

For Back Copies Containing Previously Published Sets of Pictures in This Contest See Your Newsdealer or the Tribune.