

Dolls

10c to \$50

Toyland—The Home of Santa Claus

The Store of To-day and To-morrow

THE FAIR

Established by E.J. Lehmann
State, Adams and Dearborn Streets

Dolls

10c to \$50



Baby Marie
No. 4-1. Any little girl would be the happiest girl in the world if somebody surprised her with this sweet dolly. She has a beautiful white dress, lace trimmed with a lace trimmed hood. The feet are covered with knitted booties. Body is stuffed with cotton head and hands are made of composition height 20 inches—a very life-like doll.



No. 4-2. Tiss-me-grie—Novelty composition doll, smiling face with painted features gives it a please-please expression.



No. 4-3. The Splash-me—Novelty composition doll in a painted bathing costume; assorted colors, with painted features and hair. Fancy silk cap.



No. 4-4. Baby Bobbie has wig, bisque head, composition body, is jointed at neck, shoulders and hips. Wears white slip. Height, 7 1/2 in.



No. 4-13. My Darling—This cute little dolly will make many a little girl's heart happy. Has bisque head, moving eyes, composition body, jointed neck, shoulders, and hips. Height 13 inches.



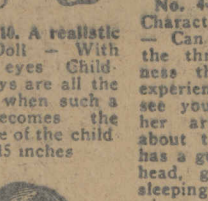
No. 4-14. Baby Rose—Would look good to any little girl; blue eyes; tiny ears would listen joyfully to the sound of its voice. The head is made of bisque with moving eyes and has a good quality wig, jointed neck, shoulders, and hips. Dressed in lace trimmed slip. Height 16 inches.



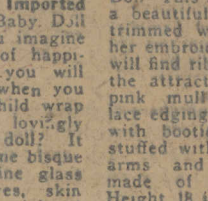
No. 4-18. Baby Helen—Has pretty organy dress hood trimmed with ribbon rosettes; knitted jacket, leather slipper, and hair wig. Dressed in lace trimmed slip. Height 12 inches.



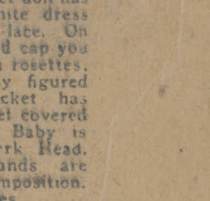
No. 4-3. Celluloid baby doll. Oh, mamma, please give me something to make a pretty dress for this doll. The doll is of celluloid, jointed at shoulders and hips. Height 10 1/2 inches.



No. 4-7. Celluloid baby doll—its mischievous eyes always make a hit, made of celluloid, painted in flesh color. Height 8 in.



No. 4-19. Baby Anne is a very charming doll. It's pretty dressed in a dress and cap has captured the hearts of many little girls. Special composition head and hands, moving eyes, and short wig. Height 17 inches.



No. 4-20. Miss Lena, handsomely dressed, has fully jointed composition body and head, beautifully curled real hair wig dressed in a handsome velvet dress, lace trimmed with silk ribbon sash, and slippers. Height 17 inches.



No. 4-26. Baby Agnes—The belle of them all. This wonderful doll is beautifully dressed in a fine white lawn dress with lace trimmed red. Blue poke bonnets, trimmed with flowers; composition head and body fully jointed. Sleeping eyes, natural hair wig. Height 20 inches.



No. 4-22. My Darling—Large size doll, all of unusual loveliness. The paper mache body makes her extremely light and strong. You can hug and squeeze her as hard as you wish. The head is a perfect dream. Eye lashes, drooping eyes, pretty white teeth and hair wig. Height 24 inches.



No. 4-23. Baby Gertrude—The girl who is lucky enough to be presented with one of these splendid baby dolls will be envied by all her playmates. Baby Gertrude is a really lovely girl, gowned in a beautiful blue lawn dress, ready for a late afternoon walk. She has a kerchief and bag to match. Pink bonnet with white in allusion, trimmed in blue, stockings and slippers; with composition head. Height 20 inches.



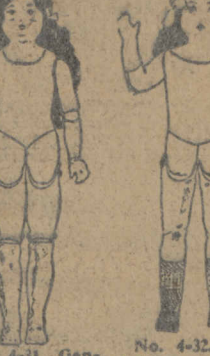
No. 4-29. Miss Anabelle is waiting to be adopted by some girl who will always keep her looking nice. She is charmingly dressed in a blue organy dress with white in allusion, full jointed, sleeping eyes; natural hair wig; dressed in a dainty white slip. Height 22 inches.



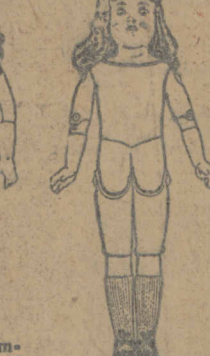
No. 4-30. Miss Ruth—This little lady will be a good chum to any girl. Made of composition, full jointed, sleeping eyes; natural hair wig; dressed in a dainty white slip. Height 22 inches.



No. 4-31. Gertrude—This doll has real hair and real eyes, natural hair slippers. Height 20 in. high.



No. 4-32. Miss Ruth—This doll has real hair and real eyes, natural hair slippers. Height 20 in. high.



No. 4-34. Baby Jane—Real bisque head and hands, moving eyes, natural hair wig, full jointed imitation kid body, has socks and slippers. Height 15 1/2 in.



No. 4-35. Miss Edna—A doll with sleeping eyes, natural hair wig, composition body and limbs. Height 17 inches high.



No. 4-39. Kewpie—beautifully dressed, natural hair wig, regular little vamp. Height 15 inches high.



No. 4-38. Miss Betty—This beautiful imported doll is so proud of her charmingly harmonized attire that she wants every little girl to see her; she wears a dress of finest organy with that to match. Also vestee of contrasting color. Lace trimmed slippers. Has real bisque head, sleeping eyes, mohair wig, paper mache body and limbs, modeled on life-like lines. Height 8 inches.



No. 4-43. Kewpie—This doll is made of bisque, we have in it every day in the week. Height 5 1/2 in.



No. 4-42. Miss Betty—This beautiful imported doll is so proud of her charmingly harmonized attire that she wants every little girl to see her; she wears a dress of finest organy with that to match. Also vestee of contrasting color. Lace trimmed slippers. Has real bisque head, sleeping eyes, mohair wig, paper mache body and limbs, modeled on life-like lines. Height 8 inches.



No. 4-45. Baby Nellie—A little dolly, cotton stuffed head, body and limbs, hand painted face, nicely dressed in a dotted Swiss dress with hood and tied with ties. Height 15 inches.



No. 4-47. Raggedy Ann—This famous character rag doll has stuffed body and painted face. Height 15 inches.



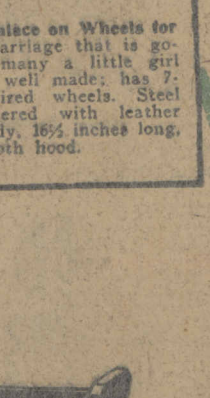
No. 4-47. Raggedy Ann—This famous character rag doll has stuffed body and painted face. Height 15 inches.



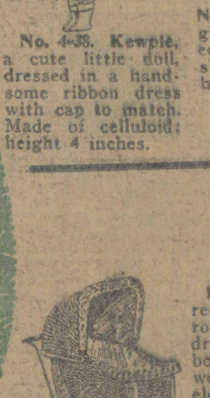
No. 4-47. Raggedy Ann—This famous character rag doll has stuffed body and painted face. Height 15 inches.



No. 4-47. Raggedy Ann—This famous character rag doll has stuffed body and painted face. Height 15 inches.



No. 4-47. Raggedy Ann—This famous character rag doll has stuffed body and painted face. Height 15 inches.



No. 4-47. Raggedy Ann—This famous character rag doll has stuffed body and painted face. Height 15 inches.



No. 4-47. Raggedy Ann—This famous character rag doll has stuffed body and painted face. Height 15 inches.



No. 4-47. Raggedy Ann—This famous character rag doll has stuffed body and painted face. Height 15 inches.



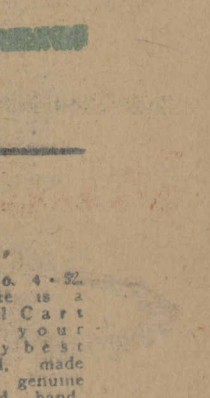
No. 4-47. Raggedy Ann—This famous character rag doll has stuffed body and painted face. Height 15 inches.



No. 4-47. Raggedy Ann—This famous character rag doll has stuffed body and painted face. Height 15 inches.



No. 4-47. Raggedy Ann—This famous character rag doll has stuffed body and painted face. Height 15 inches.



No. 4-47. Raggedy Ann—This famous character rag doll has stuffed body and painted face. Height 15 inches.



No. 4-46. A Palace on Wheels for Baby—A doll carriage that is going to make many a little girl's day. Extra well made; has 7 inch rubber tired wheels. Steel axles; upholstered cloth, wood body, 19 1/2 inches long and leather cloth hood.

When Dolly takes a ride

Doll Carriages, \$1.25 to \$29



No. 4-49. Doll Carriage—Genuine red body and hood, velvet corduroy lining in hood, on adjustable drop back and sides of seat. Embossed leather safety straps; hard wood turned handle. Black enameled running gear, spring and brake. 12 inch black enameled double spoke wheels, with nickel-plated hub caps; 3/4 inch rubber tires. Height over all 24 1/2 inches. Measures 25 1/2 x 13 1/2 inches.



No. 4-50. Collapsible Doll Cart—Well made of iron. Has auto top, size 6 3/8 x 14 1/2. It has a continuous steel pusher handle, 5-inch wheels with all steel spokes. Height to handle 21 inches; the seat is made of black leatherette.



No. 4-51. Reed Doll Carriage—This beautiful doll carriage is a beautiful day to ride your dolly about in. It is upholstered in velvet corduroy.



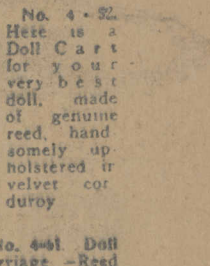
No. 4-52. Doll Carriage—Reed body and hood, velvet corduroy lining; especially well made; handsome finished hand-embossed leatherette. Hard wood turned handle, 5-inch wheels with all steel spokes. Height to handle 21 inches; the seat is made of black leatherette.



No. 4-53. Doll Carriage—Reed body and hood, velvet corduroy lining; especially well made; handsome finished hand-embossed leatherette. Hard wood turned handle, 5-inch wheels with all steel spokes. Height to handle 21 inches; the seat is made of black leatherette.



No. 4-54. Doll Carriage—Reed body and hood, velvet corduroy lining; especially well made; handsome finished hand-embossed leatherette. Hard wood turned handle, 5-inch wheels with all steel spokes. Height to handle 21 inches; the seat is made of black leatherette.



No. 4-55. Doll Carriage—Reed body and hood, velvet corduroy lining; especially well made; handsome finished hand-embossed leatherette. Hard wood turned handle, 5-inch wheels with all steel spokes. Height to handle 21 inches; the seat is made of black leatherette.

Furnishings for Dolly

19c to \$4.49



No. 4-72. Doll Dress—Outfit—Complete with dress, coat and pants.



No. 4-73. Doll's Checked Outfit—Complete with dress, coat and pants.



No. 4-74. Dolly's Kimono—Made of attractive figured flannel. In blue and pink.



No. 4-75. Red Riding Hood Cape—Nicely made of flannel, comes in assorted colors.



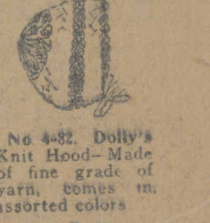
No. 4-76. Dolly's Sweater Set—Made of good quality yarn; with cap to match. Assorted colors.



No. 4-77. Dolly's Sweater Set—Made of good quality yarn; with cap to match. Assorted colors.



No. 4-78. Dolly's Sweater Set—Made of good quality yarn; with cap to match. Assorted colors.



No. 4-79. Dolly's Sweater Set—Made of good quality yarn; with cap to match. Assorted colors.



No. 4-80. Red Doll—Especially nice for the little kiddies. Head, body and limbs covered in a blue wool dress with hood to match. Height 13 inches.



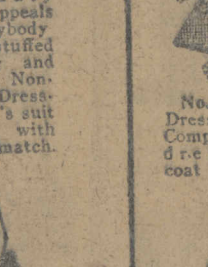
No. 4-81. Baby Milled—This smiling little baby doll at the left. Has a real bisque head, sleeping eyes, natural wig, short composition, including arms and limbs. Jointed at neck, shoulders and hips. Dress and bonnet of lawn, trimmed with lace and ribbons. Height 17 inches.



No. 4-82. Chinese Walking Doll—This walking doll has composition head and arms. Body and limbs of wood. Dressed in Chinese costume. Mercerized satin hat to match. Comes in assorted colors. Height 16 inches.



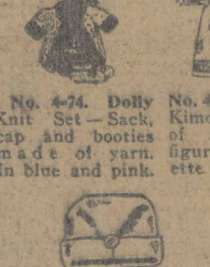
No. 4-83. American Beauty—Appeals to every body. Cork stuffed body and limbs. Non-breakable. Dressed in clown's suit of yellow, with blue hat to match.



No. 4-84. Snow happy—Made of wool for doll that is made of fine straw, trimmed with tassels and comes in blue, pink and red.



No. 4-85. Dolly's Hat—Made of good quality wool, nicely finished with tassels and comes in blue, pink and red.



No. 4-86. Dolly's Slippers—Made of good quality wool, with tassels and comes in blue, pink and red.



No. 4-87. Dolly's Slippers—Made of good quality wool, with tassels and comes in blue, pink and red.



No. 4-88. Dolly's Slippers—Made of good quality wool, with tassels and comes in blue, pink and red.



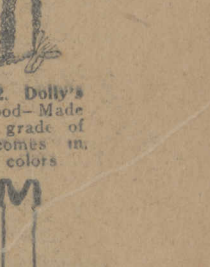
No. 4-89. Dolly's Slippers—Made of good quality wool, with tassels and comes in blue, pink and red.



No. 4-90. Dolly's Slippers—Made of good quality wool, with tassels and comes in blue, pink and red.



No. 4-91. Dolly's Slippers—Made of good quality wool, with tassels and comes in blue, pink and red.



No. 4-92. Dolly's Slippers—Made of good quality wool, with tassels and comes in blue, pink and red.



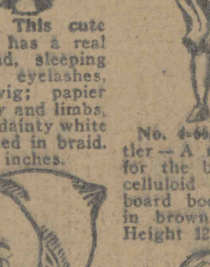
No. 4-93. Peterkin Baby—A saucy little chap who attracts the kiddies. Made of composition with jointed shoulders and limbs. Height 16 in.



No. 4-94. Sunshine Baby—A toy for the baby. Has celluloid head, stuffed body, dressed in very soft, woolly cloth with hood to match. Height 7 inches.



No. 4-95. This cute little baby has a real bisque head, sleeping eyes with eyelashes, sewed wig, paper mache body and limbs, dressed in dainty white slip, trimmed in blue. Height 9 1/2 inches.



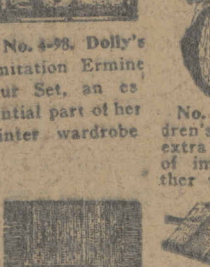
No. 4-96. Doll Rattler—A musical toy for the baby. Has celluloid face, cardboard body, dressed in brown and blue. Height 12 inches.



No. 4-97. Dolly's Diaper, assorted sizes.



No. 4-98. Dolly's Bath Towel—Nicely made with scalloped edges.



No. 4-99. A rug for your doll's house is necessary if you want it properly furnished.



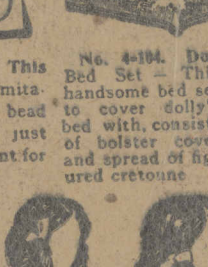
No. 4-100. Dolly's Bath Towel—Nicely made with scalloped edges.



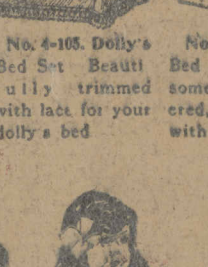
No. 4-101. Dolly's Bath Towel—Nicely made with scalloped edges.



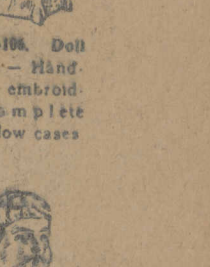
No. 4-102. Dolly's Bath Towel—Nicely made with scalloped edges.



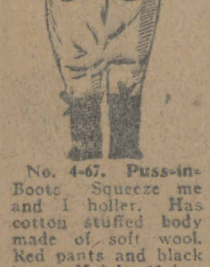
No. 4-103. Dolly's Bath Towel—Nicely made with scalloped edges.



No. 4-104. Dolly's Bath Towel—Nicely made with scalloped edges.



No. 4-105. Dolly's Bath Towel—Nicely made with scalloped edges.



No. 4-106. Puss-in-Boots—Squeeze me the doll has a voice and a holler. Has cotton stuffed body maker. Has celluloid made of soft wool. Head, dressed in red. Height 12 in.



No. 4-107. This little doll has a voice and a holler. Has cotton stuffed body maker. Has celluloid made of soft wool. Head, dressed in red. Height 5 1/2 inches.



No. 4-108. Kewpie Doll—Will make any child happy. Made of composition. Height 2 1/2 inches.



No. 4-109. Bisque Girl—A dainty little doll made of bisque and dressed in lace. Height 4 1/2 inches.



No. 4-110. Bisque Girl—A dainty little doll made of bisque and dressed in lace. Height 4 1/2 inches.



No. 4-111. Bisque Girl—A dainty little doll made of bisque and dressed in lace. Height 4 1/2 inches.



No. 4-112. This handsome piece of Doll Furniture, scroll design, finished in natural color; each piece folds up.



No. 4-113. This beautiful Doll Set, mahogany finished, has cretonne upholstering.



No. 4-114. This Doll Rocking Chair, mahogany finished, upholstered in figured cretonne.



No. 4-115. This Doll Rocking Chair, mahogany finished, upholstered in figured cretonne.



No. 4-116. This Doll Rocking Chair, mahogany finished, upholstered in figured cretonne.



No. 4-117. This Doll Rocking Chair, mahogany finished, upholstered in figured cretonne.



No. 4-118. This Doll Rocking Chair, mahogany finished, upholstered in figured cretonne.