

FIELD'S IS HEADQUARTERS FOR GIFTS

Because

PRACTICALLY ALL THE SMART GIFTS IN THE COUNTRY ARE HERE

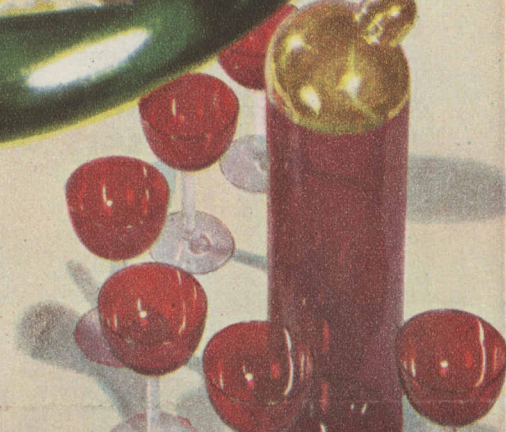
We know what we are talking about because we have just checked up in the principal fashion centers. A thorough last-minute survey of the New York market proved that we already had in stock at least 95% of the smartest and most novel things shown there. We added many of the most interesting gifts which we saw then, for the first time. SO NOW WE SAY WITH FULL CONFIDENCE THAT OUR CHRISTMAS STOCKS ARE COMPLETE. Here are a few of the thousands of gifts.

Don't miss Field's at Christmas time. It is a festive fairyland of color and shopping interest. Pictures cannot tell the whole story. But if you cannot possibly come in, address your mail orders to the Personal Shopping Bureau. They will receive immediate attention.

It's a grand idea to bring your Christmas list straight to the Gift Court on the second floor. Here you will find more than 7,000 gifts from all over the store displayed in one room. There's the Answer Shop, too, on the fifth floor of The Store for Men, to aid you in finding the very gifts that a man would choose for himself.

With all these aids to successful (and easy) Christmas shopping, is it any wonder that the gay Field Christmas boxes are almost always among the first ones opened when gifts are brought out on Christmas day?

A GIFT FROM FIELD'S—WHATEVER IT MAY COST —POSSESSES UNMISTAKABLE DISTINCTION



1. A cocktail set consists of a 14" tray, 8 plates, 8 glasses, a 1-qt. shaker, a box of colored cocktail toothpicks. Crystal with ruby, blue or frost. \$8.50 Glass, 2nd floor. Set,

2. A cocktail basket with jiggers spoon contains appetizer paste, olives, anchovies, appetizer puffs, artichokes, all put up in cellophane wrapping. Candy, 3rd floor. \$4.50

3. An oriental cocktail set that got its finish by many applications of lacquer has a tray 13" by 10", 6 cups. Red or black with gold. Artwares, \$6.50 2nd floor. The set,

4. The nut bowl set has red and gold oriental decorations on black lacquer, 6 nut cups, ladle to match. Use it, too, as a fruit container. Artwares, 2nd floor. The set, \$2

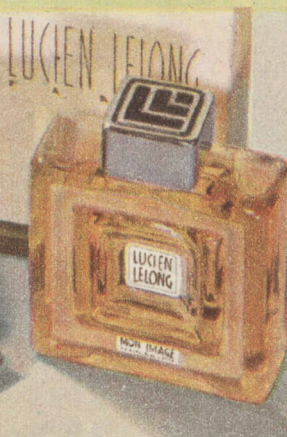
5. This cocktail set serves six. It consists of a 1½-quart shaker with a metal top, 6 stemmed glasses. Ruby, blue or crystal and frosted glass combined. Glass, 2nd floor. \$7.50



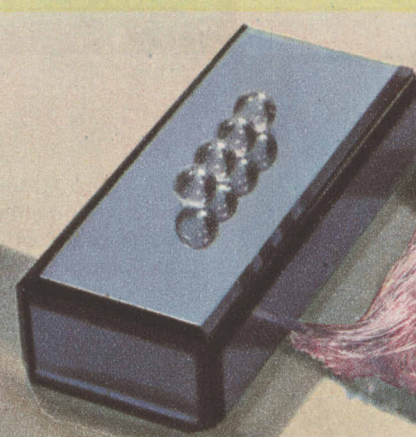
6. This suede jacket is light in weight yet it is very warm, for it is lined with wool kasha. Well-tailored, but smartly casual. Brown, green, \$10.95 rust. 34 to 46. Sports Room, 6th floor.



7. The ball with a knob on it is a manicure set! It contains enamel, cuticle and enamel remover, nail white and cotton. Comes in black, white or green bakelite. \$1 1st floor, State. The set,



8. The triple vanity in enamel is one of Bourjois' contributions to the season. Loose or compact powder, rouge and lipstick. Black, red, green, white. \$2.75 1st floor, State.



9. Eau de toilette in the famous Lelong perfume, Mon Image, is a distinguished gift. In a delightful, four-square flacon with indented design. \$5 8-oz. 1st floor, State.



10. A cigarette box of plate mirrors is very handsome. Large enough to hold 3 packs of cigarettes and lined with mirror. Beveled edges. Crystal or blue. \$8 Glass, 2nd floor.



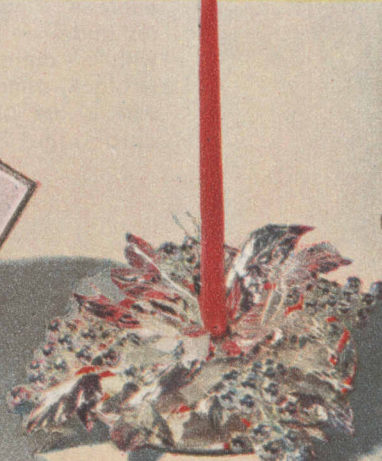
11. Zibeline's sashet tassel is a pleasing luxury. Hanging in your closet, it imparts fragrance to your clothes. Orchid, white, blue, pink, maize. \$3.75 1st floor, State.



13. A 14" case has 2 jars, 2 bottles, easel-back mirror and comb. Leathers of alligator or crushed morocco grains in black or colors, with fittings to harmonize. 1st floor, Wabash. \$12.50



14. A chocolate box inspired by the architecture of today contains chocolates and bonbons no less appealing to a modern taste. The trays are accessible. \$4.50 3rd floor. 2-lb. box,



15. A gay centerpiece has silver leaves, bunches of grapes and a 16" candle on a 10" mirrored plateau. All silver or silver with blue or green. 2nd floor, Wabash. Complete, \$2.95



16. Commode lamps, 18½" high, have silk shades, metal bases. Green enamel base with beige shade, gold lacquer with gold, ivory enamel with ivory. 2nd floor, Wabash. Each, \$7.50



17. The carafe set has a vacuum jug, tray, glass and ash tray. Chromium, or black, red or green enamel with chromium. With pt.-size jug, \$12.50. 1st floor, Wabash. 17a. With qt.-size jug, \$15



18. A delicious glace fruit cake keeps indefinitely. To serve as plum pudding, just slice and steam. By the lb. plain cake, 85c 18a. With the glace fruit decoration, \$1.25. 7th floor.

THE
STORE OF THE
CHRISTMAS
SPIRIT

All of these gifts, and many more, are to be found in the Evanston and Oak Park Stores.

MARSHALL FIELD & COMPANY