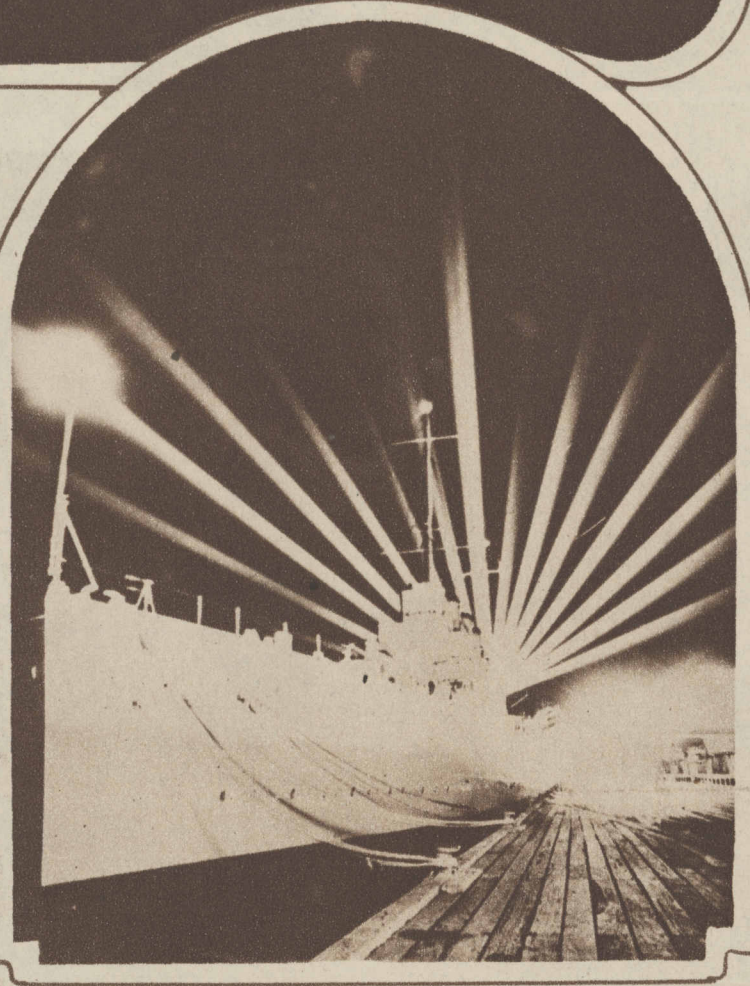


"MOONLIGHTED"—A new development in flood-lighting, simulating the soft effulgence of moonbeams, is carried into effect in illumination of Cleveland's new museum of fine arts. The effect is achieved by unequal lighting from two batteries of floodlight projectors, mounted atop 35-foot bronze standards.



A LECTURING COUSIN OF THE CZAR, Grand Duke Alexander of Russia, opened an exhibition of pictures in New York shortly after his arrival in the states for his newest speaking tour. The grand duke, whose home is in Paris, was a lecturer in Chicago last January. (Photograph from Wide World.)



FULL DRESS—Flooded with brilliance and crowned with a dazzling aigret by powerful searchlights, the new British warship Australia presented this shining spectacle at Melbourne. (Photograph from International.)



## Beauty demands Clean Skin

The first essential to complexion beauty is a clean, white skin.

The modern woman, whose skin is constantly exposed to dust and dirt, knows this means more than soap-and-water cleanliness. She uses Plough's Cleansing Cream before or after using skin soap, depending upon whether her skin is oily or dry.

This pure, dainty cream frees the pores of impurities which cause blackheads and blemishes and keeps the skin radiantly clear and smooth. Three sizes, popularly-priced at all dealers!

**Plough's**  
BLACK AND WHITE  
CLEANSING CREAM



Plough, Inc.  
NEW YORK, MEMPHIS, SAN FRANCISCO



## "JUST WHAT I WANTED" an Amerith Toilet Set

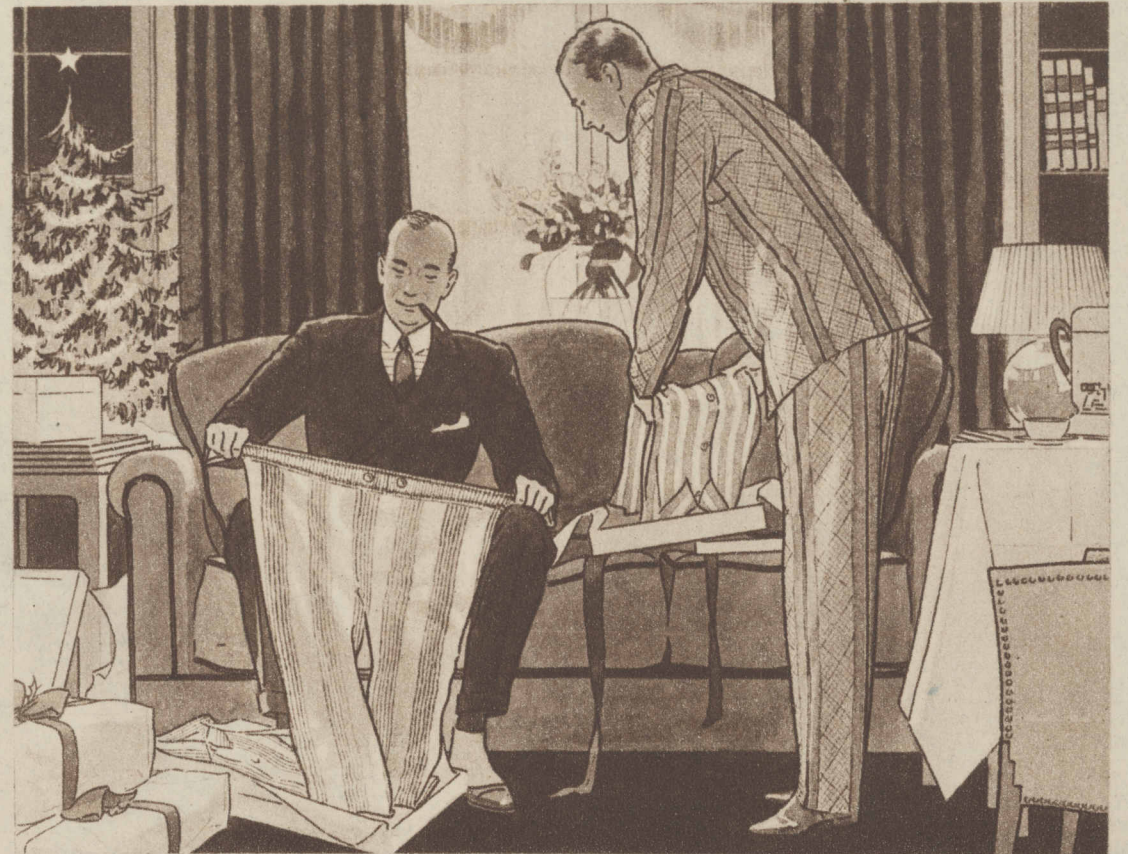


An Amerith set in peach, green or maize pearl is just what she'll need to accent the newest color schemes for bedroom decoration. Any good department, drug or jewelry store has Amerith sets in colors to please you.



Who would think of going to bed bound round and round with an inflexible rope? Yet some men still do that every night . . . with old-fashioned pajama draw-strings knotted around their middles.

# Simplify your list of gifts for men with Faultless Nobelt Pajamas ...unusual...stylish...



THOSE who will give Faultless Nobelt Pajamas to the men on their list this year can yet "do their shopping early" . . . and . . . what is most important . . . really give gifts that will bring lasting pleasure.

Faultless Nobelts are Christmassy gifts. Their splendor of colors, designs, and materials would rival that of the merchandise carried by the ancient oriental trading caravans. They come in many models; low-cut neck, high collars, or the smart English convertible collar on beautifully tailored coat models; collegiate, convenient slip-on models; models for lounging, with gay sashes. The patterns range from plain solid colors for those whose tastes are simple, to brightly colored striped, checked and figured designs, many of which are exclusive to Faultless. Madras, percale, silk and broadcloth are some of the materials that can be obtained.

Each pajama is equipped with the patented Nobelt waistband, soft, flat and resilient. It contains no ordinary garter elastic to cut into the flesh—its resilience is woven into the very fabric of which it is made. It brings real sleeping comfort, expanding and contracting with the slightest body movements—even breathing with the wearer.



They  
stay up  
without  
noticeable  
waistline  
pressure

Here in Chicago's haberdasher shops and men's wear departments are gifts the finest that you can purchase for men—gifts the beauty and the comfort of which will long delight those who receive them. You will enjoy examining the brilliant variety of design, the skilful workmanship in fine materials. Tomorrow, fill out your Christmas list with Faultless Nobelt Pajamas. The Faultless Manufacturing Company, Baltimore, Maryland. Chicago Sales Office, Republic Building, 209 South State Street; New York Sales Office, 452 Fifth Avenue (at 40th Street).

# Faultless Nobelt Pajamas

REG. U. S. PAT. OFF.

PAT. RE. NO. 16641

"The nightwear of a nation" since 1881



The Nobelt waistband is guaranteed to stay resilient. It can be laundered without fear. A tag is attached to every pair of Faultless pajamas insuring replacement of the entire garment if the waistband loses its resilience.