



# MARSHALL FIELD & COMPANY

## A truly amazing selling of ORIENTAL RUGS

- **HAMADAN RUGS** . . . they are very heavy and have that deep pile which denotes a rug that is of real worth, and also one that will prove to be durable under hard wear. In soft colors . . . size, approximately, 2' x 4' priced at only **\$11**
- **DARDEZINES** . . . these rich, silky Persians are about as beautiful as Orientals could be, with a heavy lustrous pile and a sturdy weave that will take hard use. Approximate size, 2'6" x 5'; priced **\$1750** at only
- **LILAHANS** . . . the pile is deep and rich and the weave is exceptionally close. The designs of these rugs are among the favorites of connoisseurs who love Orientals for their beauty of pattern as well as for their glowing colors. Approximate size 3'x5', **\$2450** priced at . . .
- **HAMADAN RUGS** . . . made from long wearing wools, selected for their sturdiness, for their durability and for the readiness with which they take and keep smart color. Approximate size, 3'x6" x 6'; **\$2125** priced at . . .
- **CHINESE RUGS** . . . they are very durable, and these are very specially priced, representing some of the finest values we have had in our section. With red, blue and taupe grounds. Size 1'x3'x2", priced at **\$1**

THIRD FLOOR, SOUTH, WABASH

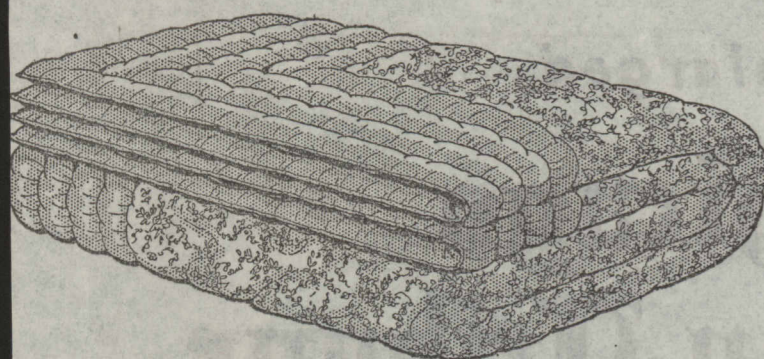
## Selling of plain or figured, 27-inch CARPETS—\$1 yard

These are for the most part roll ends or short lengths, but the sizes include pieces not only suitable for small corners but for fairly sizable spaces, such as dinettes, stairs or halls. Velvets, Wiltons and Axminsters included. We suggest that you bring in the measurements of the spaces to be covered.

## Values that are amazing JACQUARD WILTONS 9x12, each \$27<sup>50</sup>

In design, all that is lovely in a fine Oriental, reproduced in soft colors, on rose, taupe, rust or tan grounds. And there are 12 patterns from which to choose. Of course, the famous lasting qualities of Wiltons have helped to make them as popular as they are.

THIRD FLOOR, MIDDLE, WABASH



## An excellent value . . . COMFORTER \$4<sup>95</sup>

It's all-wool filled, and that's why it's so nice and warm . . . and it is covered with sateen in a very smart design with a figured center and a plain border and back . . . the pattern is the floral type that is so attractive for bedding. In rose, blue, orchid or green, cut size 72 x 84.

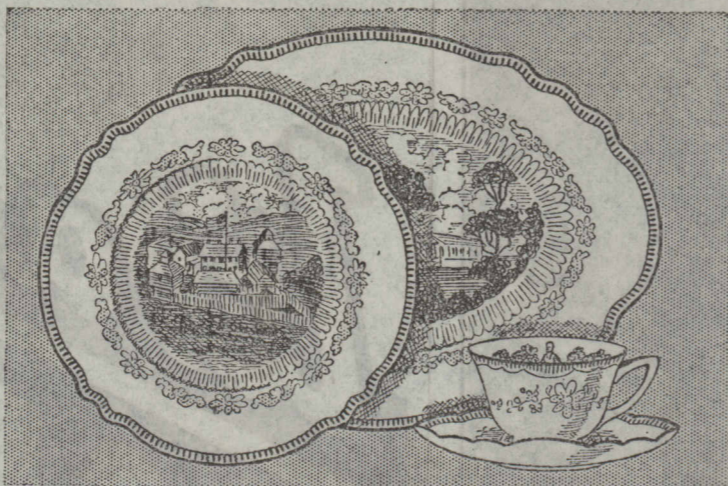
SECOND FLOOR



## Hand-tufted BEDSPREAD \$2<sup>75</sup>

Featured at this price for today only . . . twin or double size in two different patterns on a white ground. Rose, green, blue, lavender, peach, red or all-white.

SECOND FLOOR, NORTH, STATE



## It Tells Chicago's History BREAKFAST SET \$5

It was produced in commemoration of A Century of Progress, and we feel that there could not be a more appropriate time to offer this set at a special price than during Chicago Week. Decorated with six different engravings, representing six important events in our civic history. In pink, mulberry or blue; 32 pieces.

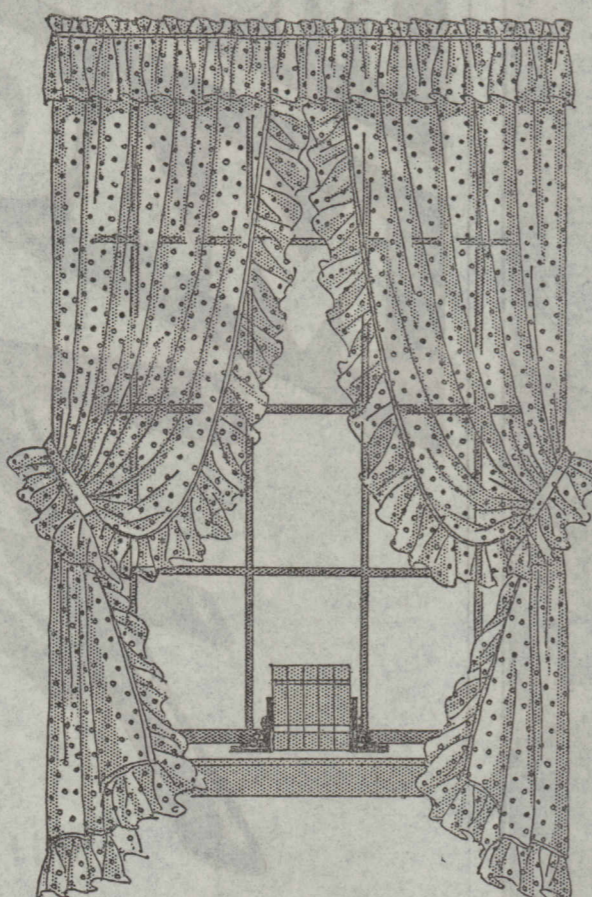
SECOND FLOOR, NORTH, WABASH



## Exquisitely cut . . . CRYSTAL STEMWARE each 25c

A very special selling which includes two lovely patterns . . . a wide and varied assortment of pieces in each. Now is the time for those who love beautiful stemware to stock up with goblets, sherbets, wines, cocktails, cordials, plates or any other pieces which may be needed. These items are also very appropriate for Christmas gifts.

SECOND FLOOR, MIDDLE, WABASH



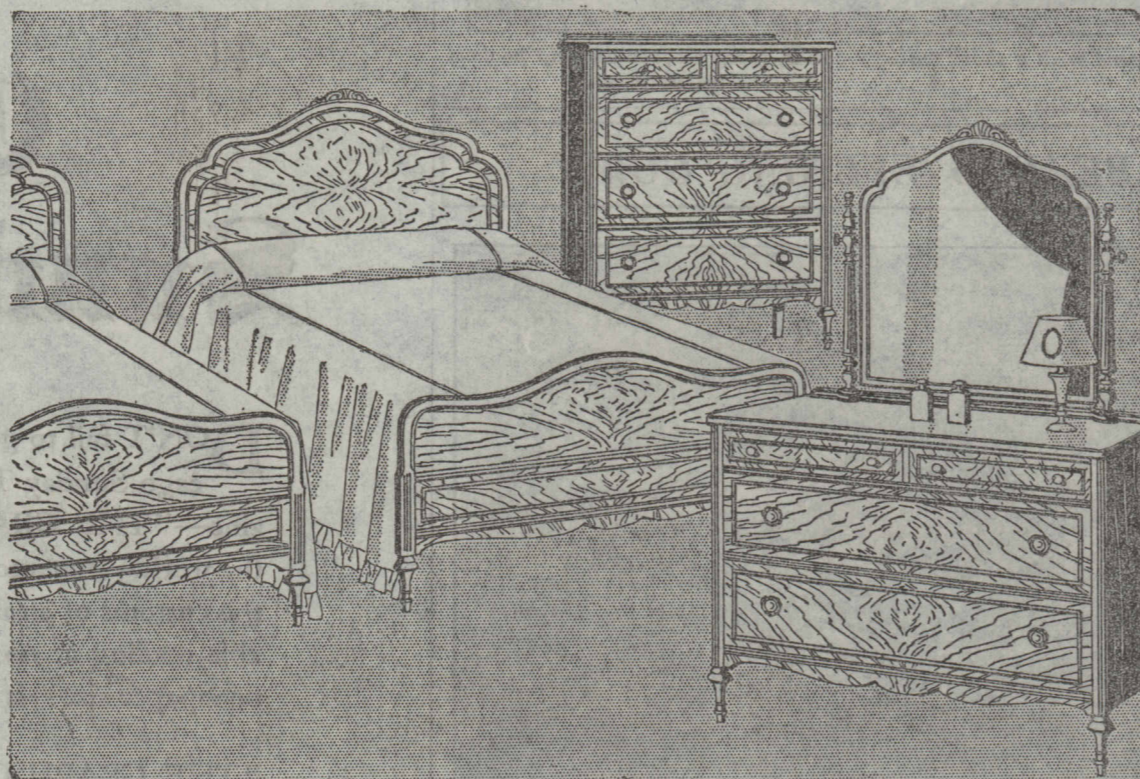
## Choose them ruffled or very, very plain CURTAINS

go from one extreme to the other . . . never have we been more intrigued by all things early American and naive, and never more pre-occupied with the modern movement. Choose according to your own tastes, and choose from values such as these on our ninth floor.

*At Left*  
The ruffled curtains come in ivory or ecru, both very acceptable shades that harmonize well with a wide variety of colors. They are 2 1/4 yards by 42 inches, and are exceptional values at \$2.50 a pair.

*At Right*  
Tailored marquisette, irreproachably finished, and in that lovely shade of ecru that is typical of French marquisette. Notice the weave for it is a novelty type of open mesh, and very smart. \$2.50 a pair.

NINTH FLOOR, MIDDLE, WABASH



## A marvelous value and so well styled 4-PIECE BEDROOM SUITE \$79<sup>50</sup>

Of course the price is amazing for such a group of bedroom furniture, but we hardly thought of that, for we were so intrigued with the smart designs. Of walnut and gumwood. Matching pieces at proportionately low prices.

EIGHTH FLOOR



## Perfect combination Direct and Indirect Lamps

Nothing could be more convenient than a lamp equipped for both direct and indirect lighting, and when you find a lamp as attractive as this, at this price, then you have something to write home about. All-silk in rust, green or gold. Complete with 300-watt bulb at only . . . \$12.50

SECOND FLOOR



## Varied collection in our Selling of Beds \$9<sup>85</sup>

An assortment of styles . . . the popular types that you have been very much interested in . . . both twin and full sizes are included in this unique selling. In combinations of maple, mahogany and walnut with gumwood, and all well constructed and nicely finished. Needless to say they are very special.

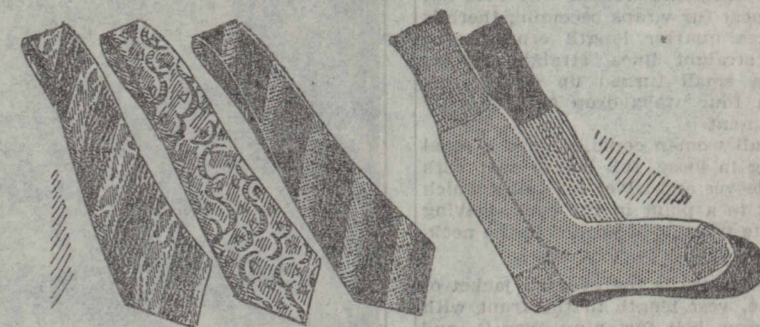
EIGHTH FLOOR

## Scoops from THE STORE FOR MEN



## Flannel Robe, \$8<sup>50</sup> with 3 initials

A smart, solid color robe in either a smart maroon or a good-looking blue. And you may have a clever, three-initial monogram put on the pocket while you wait. A very special value for State Street Day. FIFTH FLOOR

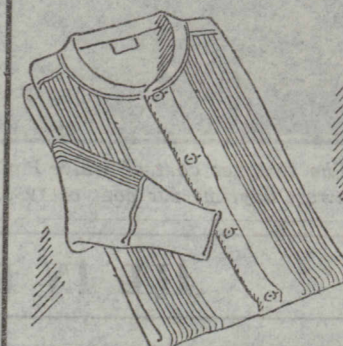


## NEW! TIES worth more than \$1<sup>15</sup> each

Bought to go into stock at a higher price. Marked at this special price today to demonstrate the outstanding leadership of this department. All-over patterns, neat, smart, good-looking. Some irregular striped effects. Hand-made.

## Real Values in SILK OR LISLE HOSE 60c

Blacks. Grays. Greens. Browns. Vertical stripes. Clocks. Small Figures. Sizes from 9 1/2 to 12—and many of the hose in this event are full-fashioned. Buy a half a dozen pair at this price.



## Combed Cotton UNION SUITS Special, \$1<sup>25</sup>

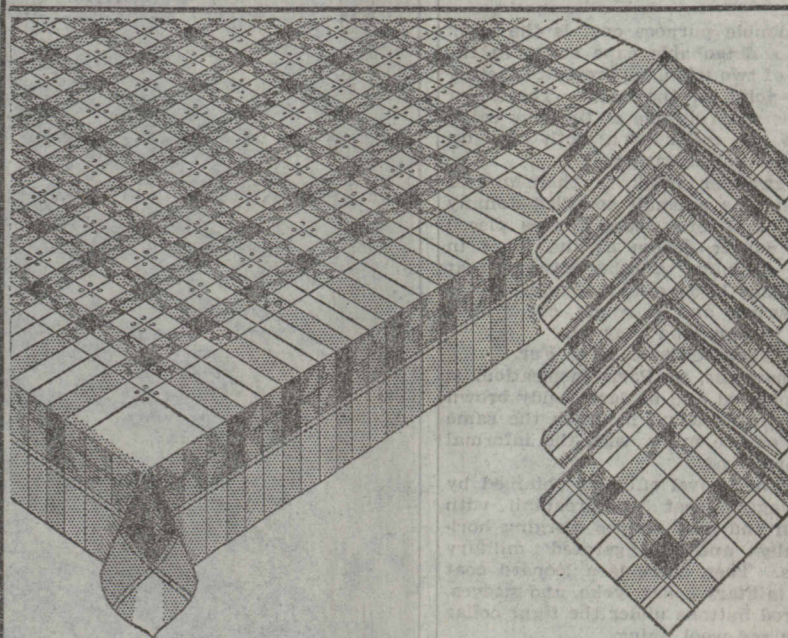
In a medium weight that is perfect for Fall wear; made with a panel front and in either short or long sleeves with ankle legs. One of the best values in months.



## Solid Color BROADCLOTH PAJAMAS, \$2<sup>15</sup>

Trimmed with contrasting piping; tailored of a superb quality fabric; available in smart, plain shades. Three styles—middy, collarless, convertible collar.

FIRST FLOOR



## Stunning colored damask LUNCHEON SETS SEVEN PIECES—SET \$3<sup>95</sup>

SEVEN PIECES—SET \$3<sup>95</sup>

The cloth is size 54x54 inches and the six napkins are 13 inches square. When you see this set you will realize that only because we were in the market in time to buy at pre-advance price levels are we able to offer such a remarkable value as this. In white with green and gold, or helio and blue.

SECOND FLOOR, NORTH, STATE