

**SUPPORT 4,500 ON RELIEF FOR \$36,000 MONTH**

**Faulty Handling Charged in Whiteside County.**

BY GEORGE TAGGE. (Chicago Tribune Press Service.) Stealing, Ill., Sept. 29.—(Special.)—In Whiteside, one of the Rock river counties at the western border of the state, an estimated \$36,233 is being spent this month to support 4,500 persons on relief. It was found in the course of a study today. This is nearly four times the February expenditures and far more than was spent in an entire year before the Illinois Emergency Relief commission took charge two years ago.

Although the cost of administration has doubled in recent months, so that 38 persons are employed in an elaborate setup, even the commissions, "clients" are far from being satisfied. Charges of faulty handling of relief were made today in their behalf, but were promptly denied by Administrator Walter Baus.

Interviews 200 Families. Harvey L. Shawver, publisher of the Whiteside County News, made the charges at his home at Morrison, the county seat, 14 miles west of here. The great number of letters of complaint sent to the paper led him to interview 200 relief families over several months, he said.

"The uniformity of the stories I heard convinced me they were true, and it got under my skin," Shawver declared. "A common complaint is that when the food truck comes around the clients are required to sign a receipt for a long list of items before distribution begins.

"Then the short changing on food takes place. The first item might call for a bag of flour, and the client is told there is no flour. When he is charged up with five pounds of lard he may only get a pound, and so on down the line."

Organize to Make Protest. Administrator Baus said that no such incident had ever taken place, but the idle nevertheless are organizing to make their protest.

Shawver also said that relief families in his vicinity were unable to obtain their allotment of potatoes, although they heard that a carload had been received in the county. Finally, he discovered that the potatoes marked "for relief purposes only," were being used at the county poor farm.

Administrator Baus denied that relief families had not been supplied, but admitted that some of the potatoes had been used at the poor farm. He said that any inference of graft would be false, because the potatoes, shipped here by the federal surplus relief corporation, had not taken the place of regular purchases.

Drouth Causes Shortage. There are no funds for potatoes at the poor farm, he said, because these are usually produced there. The drouth caused a shortage this year.

"Any food given to the county poor farm by us is only with the pledge that it will not supplant the usual amount," said the administrator. "For instance, if they had been served potatoes once a day ordinarily, the \$36,233 potatoes would have to be served as an addition."

Shawver also told of complaints based on the "inequitable" refusal of the commission staff here to pay any rent, although rent is paid in other counties. The administrator said that because of an agreement with the township supervisors, who formerly handled all relief, that only they should pay rent.

As to local administrative expense Baus said that it ran only 8 per cent of relief expenditures, exclusive of a share of the Chicago headquarters' overhead. The total averaged \$2,013 for May and June, or 9.8 per cent, which still is less than the average for the state.

Many Staff Employed on Relief. However, an explanation of the staff was learned. Three-fourths of the staff employees are on work relief, and their salaries are not included in the overhead cost at all. If their pay is included the administrative cost is shown to be at least 13 per cent.

Also, this relief office is not charged with any rent for space in the Collins building, which was constructed for public use by means of an insurance subscription plan a few years ago. The county in addition furnishes heat, light and water without charge, further explaining the comparatively reasonable overhead figure.

Mrs. John Boles' Ermine Coat Is Stolen at Fair (Picture on page 18.) World's Fair police revealed yesterday that Mrs. John Boles, wife of the movie star, had reported the loss of a \$1,500 ermine coat. The coat, she said, was stolen Friday from the courtesy automobile in which she had been touring the grounds with her husband. They were dining at the Streets of Paris at the time of the theft.

'Taint the Humidity, Say Californians, It's the Heat San Francisco, Cal., Sept. 29.—(AP)—Humidity in San Francisco and vicinity went down and the temperature went up to 88 degrees. At Los Angeles the temperature shot up to 96 degrees at noon.

**URBAN LEAGUE TO ASK THAT NEGROES SIT ON U. S. HOUSING BOARDS**

The inclusion of Negro representatives on federal commissions for housing projects will be urged by the Chicago Urban League, according to an announcement yesterday at the annual meeting of the directors, officers, and staff personnel of the league in the Abraham Lincoln center, 700 Oakwood boulevard.

A. T. Foster, executive secretary, asserted that the Negroes must not be overlooked in the housing projects. He said that Negro architects should be members of the commissions approving the projects and that Negro laborers should be among those employed in the construction.

The Urban League is an organization to improve the condition of colored people. Its expansion to include branches in Evanston, the near north side, and the far south side, was proposed by several officers. The Chicago unit was founded in 1915 by five Negro leaders, one of whom, Dr. Horace J. Bridges, spoke yesterday.

**TAG TOMORROW FOR CHILDREN'S BENEFIT FUND**

Members of League Hope for \$50,000.

Star-shaped tags will be exchanged for dimes and dollars throughout Chicago tomorrow as women volunteer workers for the Chicago Children's Benefit League appeal to the public in behalf of youngsters who are benefited by the league's 50 charities.

The league, which is nonsectarian, has held an annual tag day for 26 years. Officers hope the public will be generous tomorrow and make tag donations amounting to \$50,000, which was the amount raised last year.

All agencies, Mrs. Wilfred S. Reynolds, head of the league, explained, bear the stamp of approval of the Association of Commerce. They include children's wards in hospitals, orphan asylums, schools for the deaf, children's homes and nurseries.

List of Beneficiaries. The institution whose representatives will tag today are: St. Vincent's hospital and Maternity home. St. Bernard's hospital, children. John B. Murphy hospital, children's ward. St. Mary's Home for Children. Ashland Avenue St. Elizabeth's Day nursery.

Aurustana nursery. Bethesda Day nursery. Bethlehem Orphan. Bohemian Orphan asylum. Catholic Social Center nursery. Central Baptist Children's home. Charity alliance. Chase House Day nursery. Chicago Foundling's home. Children's Receiving Home of the Lutheran Women's League. Danish Lutheran Children's home. De Paul Day nursery. Emerson House Kindergarten and Day nursery.

Englewood hospital's children's ward. Eppheia School for Deaf. Eric Chapel Institute. Garibaldi Institute auxiliary. Howell Neighborhood house. Illinois Children's Home and Aid society (aid department). Illinois Technical School for Colored Girls. La Rabida, Jackson park sanitarium. Lutheran Home Finding Society of Illinois. Madonna Center and Day nursery. Margaret Ritter Crèche. Mabel Day nursery. Mercy hospital children's ward. Methodist Deaconess orphanage. National Park Seminary Day nursery. Norwegian Lutheran Children's Home society. Olivet Institute.

Outing Association for Crippled Children. Paulist Day nursery. Provident hospital, children's ward. Restriction nursery. Sarah Hackett Stevenson Memorial nursery. St. Anne's Day nursery. St. Elizabeth's Day nursery. St. Elizabeth's hospital, children's ward. St. Juliana's Day nursery. St. Mary of Nazareth hospital, children's ward. St. Mary Settlement Day nursery. Wesley Memorial hospital, children's ward. West End Catholic Women's Club Day nursery. Women's board, Presbyterian hospital. Women and Children's hospital, children's ward.

HARRISBURG BOY SHOT; SUSPECT IS SAVED FROM MOB Harrisburg, Ill., Sept. 29.—(U. P.)—Several hundred persons who had threatened a lynching dispersed to-night when they learned that Norman Tavender, 24, suspected of a shooting in renewal of southern Illinois mine violence, had been taken to the county jail secretly.

After Harry Newkirk, 20, had been wounded critically by a pistol shot on a busy downtown corner a group began to surround the Trust and Savings Bank building, where Tavender's father runs a small printing business. As the gathering grew, stones were thrown and threats hurled.

Tia Choiser, brother of County Sheriff Eugene Choiser, said the officers decided to let the crowd mill about to take the pressure off somewhere else. All left when they found out Tavender had been taken to jail.

WANTED: MASTER SALES EXECUTIVES Do you know a fast talking—hard hitting—positive pressure "SERVICE SALESMAN" for the man who can "click" on first call. If he has said infatigably, he can earn liberal commissions week after week on this legitimate new sales building idea that is "hot" right now. ADDRESS: B F 138, TRIBUNE



**NOW BEFORE SNOW FLIES!**

**MAKE NEEDED HOME REPAIRS At today's low prices for HINES Quality Materials**



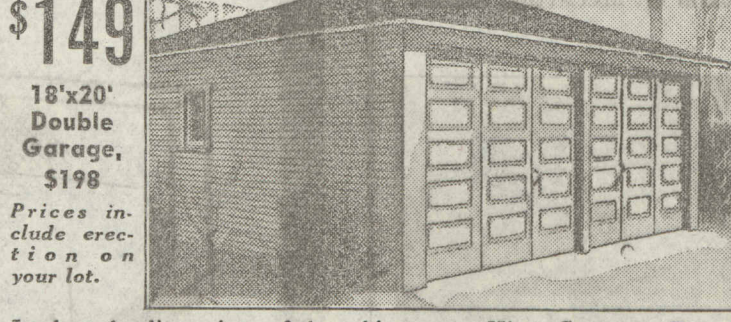
**Have Your ROOF CHECKED BY HINES**

Last summer's sweltering heat dried out and ruined thousands of Chicago roofs. Don't take chances. Have yours checked by Hines at once. Remember, it will be too late after snow flies.

For Repairs—Roof Cement, per 5 lb. can, 39c. The ideal material for repairing small roof leaks. Genuine asphalt and asbestos fiber black roof cement at a record low price. Finest black quality—will not harden or crack under cold like cheap brands. Maximum covering capacity.

IDEAS FOR OUTSIDE WALLS Asbestos Shingles in either Dutch Lap or American method are ideal for exterior walls because they are colorful, fireproof, weatherproof and durable. Dutch Lap to cover 100 sq. ft. \$7.33 only

Beveled Siding—the standard for years. 4" C Ponderosa Pine, per 100 board feet \$3.40 6" C Ponderosa Pine, per 100 board feet \$3.75 8" Clear Redwood, 5/8" thick, per 100 sq. ft. \$4.35 cover 100 sq. ft.



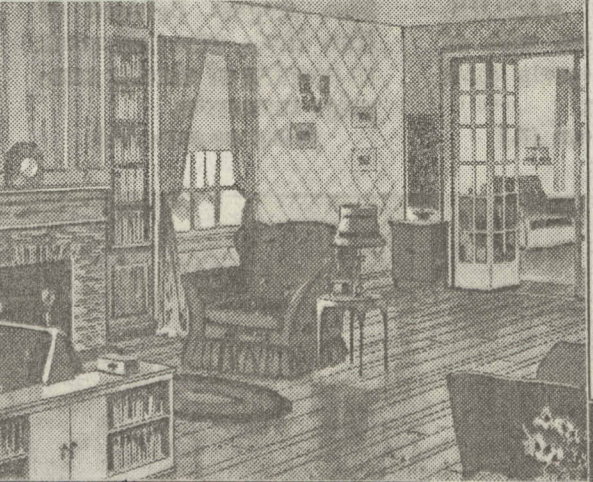
Look at the dimensions of these big, roomy Hines Garages. Remember, too, that they are of permanent construction, built by competent carpenters recommended by us, with milled fold-away doors and 85-lb. heavy slate-surfaced roofing. Then compare prices. Other sizes and styles at similar savings. PROTECT QUALITY LUMBER WITH PURE PAINT Complete Stocks at Lowest Prices

**SAVE MONEY ON HARDWARE**

Storm Sash Hardware—Storm sash hangers, cadmium 9c finish, per set. Storm sash adjusters, cadmium finish, per set. Mortise or rim combination door latches, dull 49c brass, per set. One-tumbler lock set, dull 49c brass, complete, set. Three-tumbler lock set, 98c dull brass, complete, set. We carry a complete stock of building hardware and glass at amazingly low prices. Compare!

**A Few Dollars Can Make Amazing Living Room Changes**

You should have seen this living room before Hines remodeling experts worked this miracle! By ripping out a partition, laying a new hardwood floor, and by the judicious use of knotty pine, a very attractive, inviting, livable room was created. And how much do you think it cost? \$193 Only. Knotty Pine, the new paneling now so popular. Carefully selected boards, Ponderosa pine from our own mills, beautifully finished, in all lengths and widths up to 10", per 100 board ft. \$8.20



**A Joy Room for the ENTIRE FAMILY**

Chicago has discovered the pleasures of a basement or attic recreation room. Today it's the smart place to entertain guests. And what a wonderful place it is for the children to play. Saves work for mothers, too. The cost will be a happy surprise. Ask for an estimate.

Table Tennis Plywood 2-piece 5-ply top, 5'x9'x3/4". Suitable as regulation tennis table or as cutting table, \$6.15 etc. Only

**It Costs No More to Use HINES GUARANTEED MILLWORK**

All Hines doors and millwork are built of the best kiln-dried lumber. As Chicago's largest lumber yards, we buy and sell in enormous quantities. That means larger and more varied stocks plus worthwhile savings on guaranteed quality millwork. Get our prices before you buy.

COTTAGE CUPBOARD—Clear Douglas Fir, 24" wide, 84" high, delivered K. D. without hardware, carton packed \$6.95 in the white, each

IN-THE-WALL IRONING BOARD—Complete with paneled door, wide ironing surface and extra sleeve board. Sturdily made of clear white pine, easily installed, each \$2.95

PORCH SASH—All standard sizes, 1 3/4" thick pine, 5-light, at surprisingly low prices. Typical, 1'6"x4'5 3/4" \$1.28

FRENCH DOORS, 1 3/4" thick Douglas Fir, glazed with 10 lights, clear glass. Ideal for openings between rooms, sun porch, etc. All popular sizes at remarkable savings. Example, 2'0"x6'8", \$3.79 per door

Winter's coming! Soon those wintry blasts will be moaning about your home—searching for weak spots and doing costly damage. Don't neglect these needed repairs. Have them made now while construction prices are so low. The Federal Housing Plan offers you a more liberal financing plan than ever before—NOTHING DOWN!

**Get Expert Advice on Use of PLYWOOD, WALLBOARD AND INSULATION**

We carry in stock all types of wallboard and insulation. Choice depends largely upon the purpose for which they are to be used. Let our experts save you money by selecting the best material for you. On one job they may recommend Plywood because its super-strength, finishing beauty and low cost make it ideal for your need; while on another, they may find that the cheapest fiber board answers the purpose. In other cases, they may recommend insulating materials offering double savings to you. Depend upon it: they will save you money wherever possible.

Plywood—The new, improved 3-ply wallboard of real wood with amazing strength and beauty. Compare this very low price on 3/4" sheets up to 4'x8", per 100 sq. ft., only \$3.80

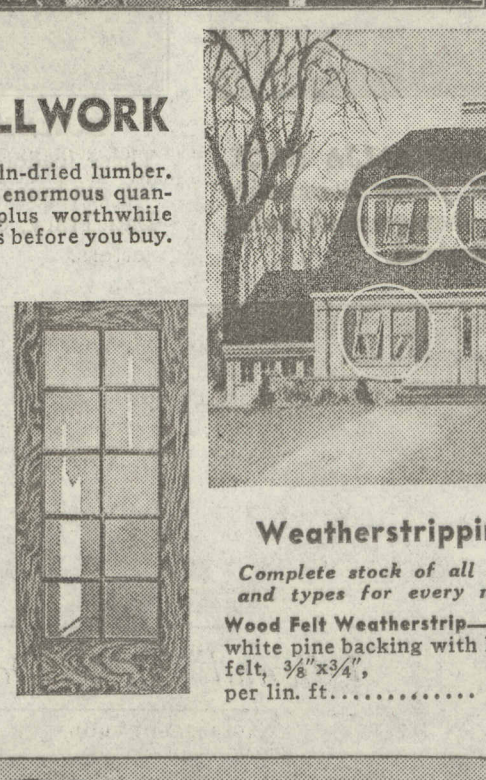
Fiber Wallboard—48" per 100 sq. ft. \$2.80

Balsam Wool—1 inch thick, one roll will insulate the ceiling of a 10x12 1/2 ft. bedroom for only \$5.37 Same quantity 3/4" thick insulation is available at \$4.94

Insulating Wallboard—A special lot, full 1/2 inch thick, in sizes still available, while it lasts, per 100 sq. ft. \$4.35

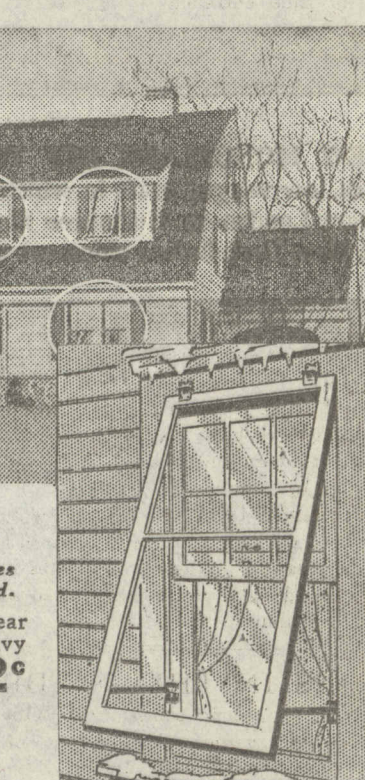
**31% SAVING**

Sounds Impossible—But University Tests Prove It Illinois University Bulletin 223 states that well made, snug fitting storm sash and doors can save 31% on fuel bills. Don't sacrifice this big saving for the few cents saved by using cheap materials. Hines Quality storm sash glazed with well known Lustra glass can be had in 119 standard sizes at prices surprisingly low. Let a Hines expert measure your windows and give you a free estimate.



**Weatherstripping**

Complete stock of all sizes and types for every need. Wood Felt Weatherstrip—Clear white pine backing with heavy felt, 3/4"x3/4", per lin. ft. 2c



**Combination Storm and Screen Door**

No tool needed to convert this year-round door from screen to storm door. Clear pine 1 1/2 inches thick, raised panels, glazed with six-light clear glass, in all sizes at big savings. Example: 2'8 1/2" x 6'9" only \$5.05

**Regular \$2.50 Value Steam Oil Permanent Wave 1.95** Complete with Shampoo and Finger Wave. An unusually smart and lasting wave with ringlet ends at a very moderate price. All waves are guaranteed. Mon., Tues., Wed. Shampoo and Fingerwave. 45c SEARS, ROEBUCK AND CO.

**EDWARD HINES LUMBER CO.** ESTABLISHED 1892. RETAIL YARDS—A YARD IN YOUR NEIGHBORHOOD. WEST: AUSTIN YARD, MELROSE PARK, GARFIELD YARD, CICERO YARD. MAYWOOD YARD, MELROSE PARK, VILLA PARK, PARK RIDGE. NORTHWEST: PARK RIDGE. SOUTH: ARCHER AVENUE. LINCOLN STREET, IRVING PARK, INDEPENDENCE YARD. NORTH: HIGHLAND PARK, GLENVIEW YARD. EVANSTON YARD, ROGERS PARK YARD, EDGEWATER YARD.