

UNCLE SAM PAYS GENEROUSLY FOR SHOVELING DIRT

Cost at Mounds CCC Camp
More than Cent a Toss.

Mound City, Ill., Sept. 22.—(Special)—Uncle Sam is paying generously for the moving of dirt in CCC camps, according to the figures recently made public by the unit at the Mounds camp. It is costing Uncle Sam about a penny and two-tenths every time one of these young men moves a shovel of dirt, and it is costing him some six and three-tenths cents every time a cubic foot is moved, and by cubic yards it would be just 27 times that amount.

The figures given out by the camp after three weeks of work do not go into details. They say that 19,380 square yards of earth were moved and 110 dams, and 33 yards of diversion ditch were built. This was the work of 200 men for three weeks.

No Costs Given. The government is seemingly not sending out cost sheets to the press these days.

But facts lead to other things. The 200 men got \$2 per day for 2 days. On top of this, a crew is kept in camp and there are officers, engineers, parties out locating projects, trucks, clothes, equipment, and such things. The cost per man will easily run \$2 per day, and one can add in an extra crew of 50 for cooks and officers at a higher salary, so that the cost of 200 men for 21 days at \$2 per day is three weeks is \$8,400. Then add about \$2,600 for officers, engineers and other things, even compensation, and there is \$11,000 cost for three weeks.

One might add the transportation cost, home and back, to the list of costs and the cost of the overhead departments which go all the way back to Washington.

19,380 Square Yards Moved.

The boys moved 19,380 square yards of earth in this time. This, roughly, is about four acres of ground. The earth is moved in this manner: On farms, which are badly washed and gullied, and which for the most part are not worth much over \$10 per acre, the boys start in by stopping these gullies. They shovel in the sides of the gully and then begin edging back, making a wide and shallow ditch. The earth moved will not be a foot deep over the entire surface.

The cost of moving this earth and building the dams was \$11,000. The cost per cubic foot of earth was 6.3 cents. The cost Uncle Sam paid per shovelful was a little over 1.2 cents.

A man working seven hours per day "tosses out" a space of 58.1 cubic feet. That is, a space about 5 feet wide, 12 feet long and 1 foot deep.

Dams Are of Woven Wire.

The 113 dams are constructed of woven wire and are not hard to build. Probably five men in five days could do this with ease, while the 33 yards of diversion ditch is really but a task for two men for more than two days.

This means that 200 men in 15 days, working 40 hours in all, actually shoveled a foot of earth off of a field less than four acres in size at a cost of \$2.750 per acre. They did not shovel it off. They merely moved it about two to five feet to one side or the other.

Figuring it another way: It is highly improbable that this ditch work was done on areas that drained over 3,000 acres of poor land. The work done, then, exceeded the value of the land.

This work was done on land privately owned and the benefits of this \$11,000 expenditure in three weeks, whatever they may be, go to the land owner. The man who has neglected his soil and farm is helped.

At a fraction over a penny per shovelful, a working man could earn \$5 per hour, or \$45 per day, working eight hours; and Uncle Sam is paying at the rate of \$6 per hour for moving dirt.

PAROLE DOCTOR AFTER 22 YEARS; SLEW HIS BRIDE

Twenty-two years after entering the state penitentiary at Joliet for the murder of his bride in a bigamous marriage, Dr. Harry Elgin Webster, 52 years old, received word of his parole yesterday. He was sentenced in 1912 for stabbing to death his wife, Webster, a young girl whom he married on Jan. 14 of that year, ten days after his first bride went to visit her family.

Throughout the years in prison Webster was known as a model prisoner. He kept up his studies in medicine and was allowed to use the prison X-ray machine. Twice when epidemics threatened the inmates he was called on to assist the prison doctors.

Dr. Webster also learned the trade of automobile mechanic. He was eager yesterday to return to his home at Dixon and to make an effort to rehabilitate himself. Until two years ago, when ill health caused her to stop, his 82 year old mother visited him frequently.

Dr. Webster was a graduate of the University of Wisconsin and of Rush Medical College. He was attached to the Polyclinic hospital at the time of his conviction.

DRINKS CLEANING ACID; DIES. Andrew Cherris, 55 years old, 1008 East 83d street, a porter, died in the County hospital yesterday after swallowing cleaning acid.

A Talent Development Course IN DANCING for Babies—Ages 3½ to 6 12 One-Hour Lessons \$3.00

Lessons are given either 2 mornings or 2 afternoons weekly. Only 3 Days to Enroll Sept. 24, 25, 26

Students of Stage Arts School Are Not Eligible. All Other Classes Now \$7.50 for 8 ONE-HOUR LESSONS excepting BAL-ROOM, which is \$5.00 for 12 hours.

STAGE ARTS SCHOOL 64 E. Jackson St. Harrison 4782 Room 617, Lyon & Healy Bldg.

LAWYER RETURNS



Miss Fanny Holtzman, woman lawyer who won motion picture libel suit and huge settlement for Princess Irena Alexandrovna Yousouf, returns to the United States.

(Acme Photo.)

BARUCH ATTACKS LLOYD GEORGE'S 'SLUR' ON WILSON

Says President Did Try Hard to Win War.

BY CHESLEY MANLY.

(Chicago Tribune Press Service.)

Hyde Park, N. Y., Sept. 22.—(Special)—A sharp retort to the recent charges of David Lloyd George, war time prime minister of Great Britain, that Woodrow Wilson failed to throw his heart and soul into the winning of the world war, was delivered here today by Bernard M. Baruch after he had conferred with President Roosevelt.

Mr. Baruch, who is one of President Roosevelt's closest unofficial advisers, said that Wilson was the most brilliant statesman in the world, and that he had conferred with President Roosevelt.

Baruch said that Wilson was the most brilliant statesman in the world, and that he had conferred with President Roosevelt.

Baruch said that Wilson was the most brilliant statesman in the world, and that he had conferred with President Roosevelt.

Baruch said that Wilson was the most brilliant statesman in the world, and that he had conferred with President Roosevelt.

Baruch said that Wilson was the most brilliant statesman in the world, and that he had conferred with President Roosevelt.

Baruch said that Wilson was the most brilliant statesman in the world, and that he had conferred with President Roosevelt.

Baruch said that Wilson was the most brilliant statesman in the world, and that he had conferred with President Roosevelt.

Baruch said that Wilson was the most brilliant statesman in the world, and that he had conferred with President Roosevelt.

Baruch said that Wilson was the most brilliant statesman in the world, and that he had conferred with President Roosevelt.

Baruch said that Wilson was the most brilliant statesman in the world, and that he had conferred with President Roosevelt.

Baruch said that Wilson was the most brilliant statesman in the world, and that he had conferred with President Roosevelt.

Baruch said that Wilson was the most brilliant statesman in the world, and that he had conferred with President Roosevelt.

Baruch said that Wilson was the most brilliant statesman in the world, and that he had conferred with President Roosevelt.

Baruch said that Wilson was the most brilliant statesman in the world, and that he had conferred with President Roosevelt.

Baruch said that Wilson was the most brilliant statesman in the world, and that he had conferred with President Roosevelt.

Baruch said that Wilson was the most brilliant statesman in the world, and that he had conferred with President Roosevelt.

Baruch said that Wilson was the most brilliant statesman in the world, and that he had conferred with President Roosevelt.

Baruch said that Wilson was the most brilliant statesman in the world, and that he had conferred with President Roosevelt.

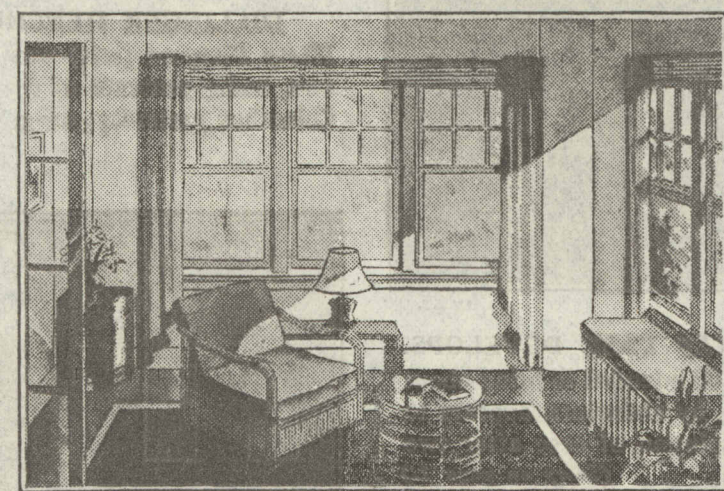
Baruch said that Wilson was the most brilliant statesman in the world, and that he had conferred with President Roosevelt.

Baruch said that Wilson was the most brilliant statesman in the world, and that he had conferred with President Roosevelt.

Baruch said that Wilson was the most brilliant statesman in the world, and that he had conferred with President Roosevelt.

Baruch said that Wilson was the most brilliant statesman in the world, and that he had conferred with President Roosevelt.

WHERE CAN YOU MATCH HINES QUALITY — at these low prices?



Your Open Porch Will Make an ENCHANTING SUN ROOM

A remarkable improvement in the appearance and comfort of a home or apartment can be made by enclosing the porch. By finishing the interior, the old public porch becomes a charming extra room. Have this improvement made at today's low costs. Let us give you an estimate.

For Porch Interiors

PLYWOOD AND WALLBOARD

Plywood—The new, improved 3-ply wallboard of real wood with amazing strength and beauty. Takes a beautiful finish. Recommended for permanent wall construction. Compare this \$4.25 very low price on 1/4" sheets up to 4'x9', per 100 sq. ft., only

Plaster Board—32"x48" 27¢ Fiber Wallboard—48"x96" 28¢

Sheets, while they last, ea. 27¢ Fiber Wallboard—48"x96" 28¢

Don't Put Off Having Your ROOF CHECKED

The roof is the most important part of any home. No home owner can afford to neglect it, for one small leak can do more damage than the entire cost of a new roof. Last summer's heat damaged many roofs. Don't take chances. Have yours checked now—before snow flies. Hines offers free roof inspection service.

Smooth Roll Roofing—Light weight, per roll to cover 100 sq. ft. \$1.06

Slate surfaced, 85 lb. standard, per roll to cover 100 sq. ft. \$2.01

Prices quoted on plain colors. Blends and safety shingles at similar savings.

Roof Cement, per 5 lb. Can, 39¢

The ideal material for repairing small roof leaks. Genuine asphalt and asbestos fiber black roof cement at a record low price. Finest black quality—will not harden or crack under cold like cheap brands. Maximum covering capacity.

Double Savings on MILLWORK

When you buy millwork, remember that you expect it to serve you for years to come. Only millwork built from properly kiln-dried lumber to quality standards which assure sturdiness will do this. Hines sells no other kind—yet, our prices are no higher. Compare them.

Service Doors, suitable for inside or outside use. Five-panel Douglas Fir 1 1/2 in. thick. A remarkable value at our money-saving price for all popular \$2.75 sizes.

Hardware Values

One-tumbler lock set, complete, dull brass, 49¢

Three-tumbler lock set, complete, dull brass, 98¢

Porch Sash—All standard sizes, 1 1/2" thick Pine, 5-light, at surprisingly low prices. Typical—1'6"x4'5 1/2" \$1.28

Fence Specials

Wire Fence—Special this week. All stock on hand at greatly reduced prices. For example—galvanized single loop, 42" high, the standard height for homes, per ft. 9¢

Fence Pickets

1"x4" Gothic head, clear Douglas Fir, each, 6¢

Fence Posts, White cedar, 7" long, each, 25¢

Think of Hines as the department store for your home. No matter whether it is lumber materials for a complete new home or for the smallest repair job, you can buy all of them here at ONE place as ONE unit. The responsibility is concentrated in one company with a forty-year reputation for quality materials. Today they are available at lowest prices. Hines' unparalleled service also includes, when desired, placing you in contact with reliable contractors, painters, roofers, etc. We make NO profit on the work of these contractors, but DO guarantee their work. Free 24-hour delivery is assured by our big fleet of 63 trucks.

Get full information on new Federal Housing Act from Hines



She: "WE WERE SURPRISED TO FIND HINES PRICES SO LOW."

Carpenter: "YES—AND YOU ALWAYS CAN DEPEND UPON THEIR MATERIALS, TOO."

SPECIAL! WHILE THEY LAST!

30 Kitchen Cupboards Reduced from \$28.95 to

\$19.95

Extra large size—48 inches wide, 7 ft. high, kiln-dried clear pine, glass doors, hardware included. Carton packed ready to put together. A truly startling value at \$19.95.

394 Chairs... \$1.23

Ideal for Recreation Room in Winter and Lawn in Summer. In Green or Brown Stain.

A clear Douglas Fir—a big comfortable chair with wide arms. Carton packed ready to put together. No telephone orders or deliveries \$1.23 at this special price of.....

Rent Money More Than Pays for It!

12'x20' GARAGE \$149

18'x20' Double Garage.....\$198

Prices include erection on your lot. Look at the dimensions of these big, roomy Hines Garages. Remember, too, that they are of permanent construction, built by competent carpenters recommended by us, with milled fold-away doors and 85-lb. heavy slate-surfaced roofing. Then compare prices. Other sizes and styles at similar savings.

Hardware Values

One-tumbler lock set, complete, dull brass, 49¢

Three-tumbler lock set, complete, dull brass, 98¢

Porch Sash—All standard sizes, 1 1/2" thick Pine, 5-light, at surprisingly low prices. Typical—1'6"x4'5 1/2" \$1.28

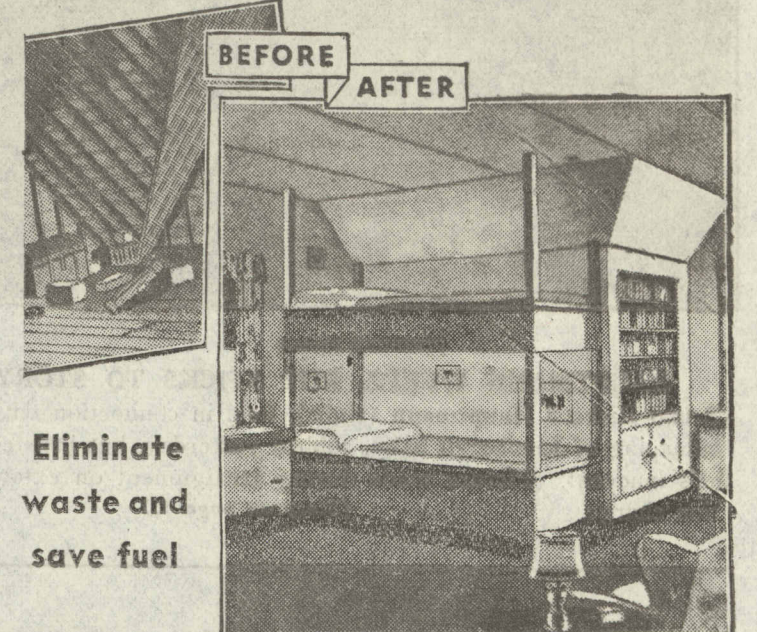
Fence Specials

Wire Fence—Special this week. All stock on hand at greatly reduced prices. For example—galvanized single loop, 42" high, the standard height for homes, per ft. 9¢

Fence Pickets

1"x4" Gothic head, clear Douglas Fir, each, 6¢

Fence Posts, White cedar, 7" long, each, 25¢



Eliminate waste and save fuel

An Extra Room Gained PLUS INSULATION

Transforming waste attic space into a cozy bedroom or playroom can be done at a cost amazingly low. The illustrated change above, for instance, can be made from \$125 to \$175, depending upon size. By insulating at the same time, the improvement can be made to pay for itself in fuel savings.

Insulating Wool Batts, 3 1/2 inches thick, will keep a room up to 12 degrees cooler in the summer and effect fuel savings up to 25%. Yet the cost of insulating the ceiling of a bedroom 10x12 feet with 3 1/2 inch batts (10 cartons) is \$11.40 only.....

Balsam Wool—1 inch thick, one roll will insulate the ceiling of a 10x12 1/2 ft. bedroom \$7.37 for only.....

Same quantity 1/2" thick insulation is available \$4.94 at.....

Insulating Wallboard—A special lot, full 1/2 inch thick—in all standard sizes—while \$4.35 it lasts, per 100 sq. ft.

A 31% Saving Possible with HINES Storm Sash and Storm Doors

If you would read the University of Illinois Bulletin No. 223, giving results of storm sash and door tests, you would hustle right over to the nearest Hines yard and place your order at once. This bulletin states that high-grade storm sash and doors—the only kind Hines sells—cut fuel cost 31%. Don't wait until cold weather arrives to have your home fitted. Have it measured and obtain an estimate now. Our stock includes all standard sizes at lowest prices. Glazed with well-known Lustral Glass.

Combination Storm and Screen Door No tool needed to convert this year-round door from screen to storm door. Clear pine 1 1/2 inches thick, raised panels, glazed with six-light clear glass, in all sizes at big savings. \$5.05 Example: 26 1/2"x69" only.....

This same size with 12-light glazed for \$5.60 only.....

Storm Sash Hardware Storm sash hangers, cadmium finish, 9¢ per set.....

Storm sash adjusters, cadmium finish, 18¢ per set.....

Mortise or rim combination door latches, dull brass, 49¢ per set.....

All types of weather-stripping at lowest prices

TABLE TENNIS PLYWOOD Regulation Size

2-piece 5-ply top, 5'x9'x3/4". Suitable as regulation tennis table or \$6.15 as cutting table, etc. Only

EDWARD HINES LUMBER CO.

ESTABLISHED 1892

RETAIL YARDS... A YARD IN YOUR NEIGHBORHOOD

WEST AUSTIN YARD, 265 N. Laverne Avenue, Austin 0222, Euclid 2441. GARFIELD YARD, 4535 W. Roosevelt Road, Austin 0470, Cicero 1933. CINCINNATI YARD, 4901 W. 28th Place, Crawford 8400, Cicero 5400. RIVER FOREST, 7820 Madison St. For. 2320.

MAYWOOD YARD, 900 S. 5th Ave., May. 7400. MELROSE PARK, 2000 Main Street, Melrose Park 780. VILLAGE PARK, 127 Monterey Avenue, Villa Park 1144. NORTHWEST PARK RIDGE, 612 W. Center Street, Park Ridge 15.

JEFFERSON PARK, 5140 Milwaukee Avenue, Pensacola 8300. IRVING PARK, 3839 Milwaukee Avenue, Kildare 3272. INDEPENDENCE YARD, 3900 N. Crawford, Pensacola 0300. SOUTH ARCHER AVENUE, 3245 Archer Avenue, Lafayette 7820.

LINCOLN STREET, 2431 S. Lincoln Street, Canal 6345. 63rd STREET, 4625 W. 63rd Street, Hickory 8400. NORTH HIGHLAND PARK, Highland Park 3720. GLENVIEW YARD, Glenview 4.

EVANSTON YARD, 1618 Church St., R. P. 741. UNIVERSITY PARK, University 0941. ROGERS PARK YARD, Clark and Howard Sts., Rogers Park 8270. UNIVERSITY PARK, 1832 Balmoral Avenue, Longbeach 4212. NORTH SIDE, Lincoln Ave. and Grace, Lake View 0926.