



DOES YOUR NAIL POLISH
CRACK?
PEEL?
CHIP?
FADE?

TRY
La Cross
Crema Nail Polish
IT STAYS ON!

Buy a bottle today and use it. A week from today—two weeks from today—you'll be convinced—forever!

The creme element keeps nails smooth, brilliant, unmarred. Lastingly lustrous colors, even if you do housework. If ever dissatisfied, return bottle to us for 50c refund plus postage. Or try it this way:

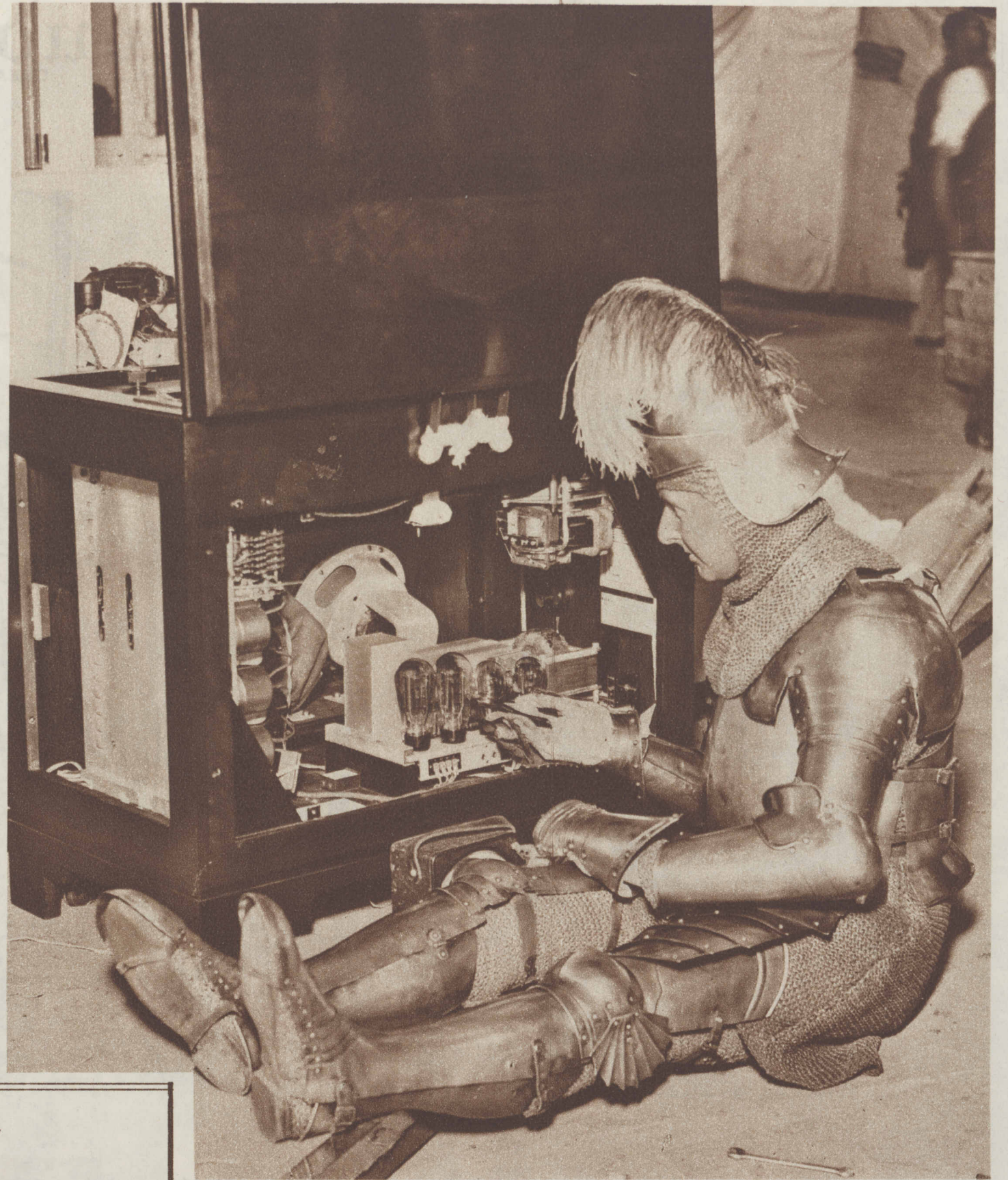
TRIAL Natural, Rose, Coral, Cardinal, Garnet, Colorless. For trial size, send this advertisement and a 3c stamp to La Cross, Newark, N. J.

OFFER

La Cross
CREMA NAIL POLISH
the latest sensation
at WIEBOLDT'S FIVE STORES

G-9-B

THE OKAPI APPEARS AT THE LONDON ZOO—"Congo," a cross between a giraffe, a deer, and a zebra, was given by the king of the Belgians to the prince of Wales, and by the latter to the zoological gardens.
 (Photo from John Steele, chief of The Chicago Tribune's London bureau.)

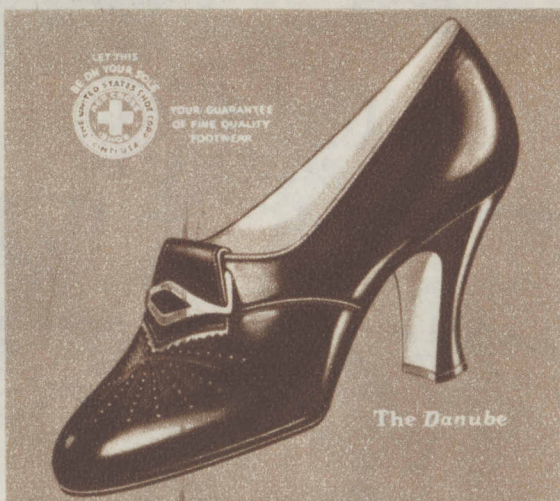


A KNIGHT LEARNS ABOUT RADIO—An anachronistic episode at a London exhibition.
 (Photo from John Steele, chief of The Chicago Tribune's London bureau.)

bringing your feet *Back to Beauty*

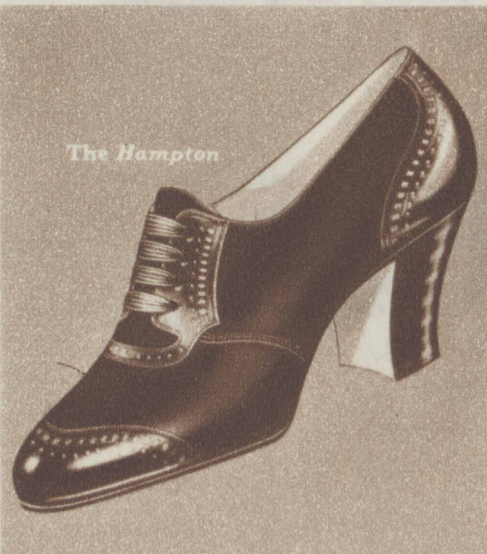
MEANS STEPPING INTO
RED CROSS SHOES

Today it's an easy matter to bring your feet back to beauty. Simply step into a pair of gorgeously-styled Red Cross Shoes and watch a transformation take place. For Red Cross Shoes act as a "beauty treatment"—help your feet achieve loveliness and shapeliness with every step.



Fascinating Jean Parker
 Metro-Goldwyn-Mayer
 featured player

Looking toward fall, visit your Red Cross Shoe dealer's right away. See the many entrancing styles he has on display—as evidenced by the ones illustrated here. Let the expert fitters help you select the last that's most becoming. Price now only \$6.50. The Red Cross Shoe Co., Cincinnati, Ohio.



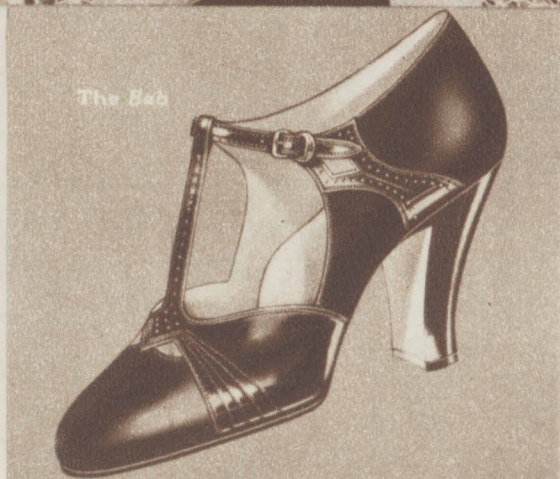
The Hampton



The Binet



The Vogue



The Bab



The Cobble Coed

\$6.50
 \$6.85 DENVER WEST



JUST OFF THE SOUND STAGE—Dolores del Rio plays table tennis.
 (Acme photo.)

Residence Elevators

Safe
 Simple
 Satisfactory
 Service for Homes

Ride THE STAIRS

INCLINATOR...Easily installed without defacing stairs, floors or walls. Folds against wall when not operated and does not interfere with customary use of stairs. Car finished to harmonize with woodwork. Electrically operated.

"ELEVETTE"...Readily installed in stairwell, hall, closet, or convenient room. Neither overhead construction nor shaft required. Car made up to wheelchair capacity.

Ask for folder and name of local representative.
INCLINATOR COMPANY OF AMERICA
 1413 Vernon Street, Harrisburg, Pa.
 Originators and Manufacturers of
SIMPLIFIED PASSENGER LIFTS FOR THE HOME

"ELEVETTE"