

## FRANCO'S ARMY PUSHES AHEAD ON VALENCIA FRONT

Battle Rages on Highway  
Leading to Port.

HENDAYE, France (at the Spanish frontier), July 3.—(AP)—Insurgent forces today pushed forward for a general four mile advance along the fifty mile battlefield in eastern Spain where government troops are attempting to stem a battering drive on Valencia.

Heavy fighting raged all day on both sides of the government held Teruel-Sagunto highway which is the easiest approach to the seaport of Valencia.

Generalissimo Francisco Franco's rebel troops advanced four miles farther into the vicinity of Cuba from Aldehuela, which was captured yesterday. Aldehuela is located only three miles south of the highway to the coast.

Batter Loyalist Trenches. Government dispatches reported particularly fierce fighting near the Mediterranean coast end of the curving front where the insurgents battered government trenches in the foothills of the Sierra de Espadan range, about thirty miles north of Valencia.

Two parallel lines spearing south from the Bechi-Artana sector, about thirty miles north of Valencia, apparently were aimed at Segorbe, on the Teruel-Sagunto road. Segorbe, a flourishing town about eighteen miles inland from Sagunto, may hold the key to Valencia. In insurgent hands it would create a junction point for armies converging from the north and west and would gravely weaken the defense of Sagunto, sixteen miles north of Valencia.

Planes Blast Rebels. Capture of Aldehuela, six miles south of Teruel, carried Franco's eastward offensive to the extreme east of the isolated Puebla de Valverde sector and broadened his salient south of Teruel.

Insurgent bombers roared over government lines, blasting Gen. Jose Miaja's redoubts and strafing the hard pressed defense forces, stripped to their waists in torrid heat. After the planes came tanks.

Insurgent advances said the charge was carried out so swiftly government militiamen were caught off guard and were unable to bring up reinforcements. They said government losses were high and reported the capture of hundreds of prisoners and much equipment.

## BRAZIL REVEALS PLOT TO MURDER DICTATOR VARGAS

(Copyright: 1938: By the New York Times.)

RIO DE JANEIRO, July 3.—The assassination of President Getulio Vargas was the main motive for the assault on Guanabara palace, Vargas' private residence, on May 11 by Fascist elements. This was disclosed today when the police handed the security tribunal the results of their inquiry.

Indictments against thirty odd direct assassins have been voted, but Prince d'Orleans Braganca, pretender to the extinct Brazilian imperial throne, was cleared of any participation in the plot or assault.

Guanabara palace was attacked and surrounded by Integralista elements. Disguised as marines, they entered the palace grounds unmolested. Investigation showed the assassins were instructed not to let Dictator Vargas escape.

### License Totals Up

Passenger Car	Truck
1926 1,020,449	151,564
1927 1,185,708	167,118
1928 1,163,722	168,436
1929 1,232,313	180,221
1930 1,317,378	186,801
1931 1,236,354	177,351
1932 1,203,720	158,620
1933 1,112,055	150,307
1934 1,176,996	158,635
1935 1,227,404	171,161
1936 1,344,196	187,905
1937 1,432,819	199,947
1938 1,459,093	195,185

Truck and automobile registrations in Illinois for the first six months of each year since 1926.

Springfield, Ill., July 3.—[Special.]—Secretary of State Edward J. Hughes announced today that 1,459,093 passenger cars had been registered in Illinois during the first half of 1938, approximately the same number as were registered in the state during all of last year. In all of 1937, 1,459,195 cars were registered. Truck registrations totaled 195,185 for the first six months of this year as compared to 199,947 for the same period of 1937. Since 1926 passenger car and truck registrations for the first half of each year steadily increased except for the years of 1931, 1932, and 1933 during which there were successive decreases.

## GERMAN FORGETS AND WHISTLES RED SONG; JAILED

(Chicago Tribune Press Service.)

BERLIN, July 3.—Workers on one of Berlin's new construction projects lifted their heads in shocked surprise when they heard a fellow worker whistling the once familiar strains of the "Internationale." His thoughts far away while laying bricks the worker was unconsciously whistling the tune which is the anthem of high treason in Germany. He woke up with a start, however, when he was haled to court and sentenced to six weeks in jail.



Frequently, you are urged and taught to buy cheaply. But MANOR HOUSE costs MORE!

There isn't any way to get the rich and perfect, appetizing fragrance of MANOR HOUSE except to pay the little more it costs: one penny, two pennies, three pennies more. It costs you more because it costs us more, because it's the finest blend that can be made, because it gives you gorgeous steaming cups of the most delicious coffee made.

Life begins at breakfast with McLAUGHLIN'S MANOR HOUSE Coffee

# MANDEL'S AIR-COOLED SUBWAY STORES

Store Closed Monday, July 4th... These Sales for Tuesday

## "After-the-Fourth" Fashion-at-a-Price Hits!

### Sale! WOOL TOPPERS!

Formerly Sold at \$5.95! Now Only

**\$1.95**

Your all around Summer coat! Newest fabrics in Dressmaker, Tuxedo or Box styles in Wool Crepe and many other fabrics. Samples in Summer shades, black or navy. Sizes 12-18.

### Man-Tailored Summer SUITS

**\$2.95**

\$5.95-\$7.95 Values!

Expensive looking fabrics in plain or action back models! White, brown, nude, or navy. Sizes 12-20.

Lower Subway, Coats



## 2,500 Swim Suits

In 3 Smashing Low-Price Groups! You Save!

PURE WOOLS AND DRESSMAKER SUITS

A swim suit sensation at 79c! Assorted 100% wool and cotton printed dressmaker suits.

**79c**

1000, \$1.98-\$4.98 Suits, Now

Rayon satin latest! 100% pure wool! Shirred latest! 1,000 suits in 20 styles! Many patterns! Many colors to choose from.

**\$1.79**

Sport Shop, Lower Subway

HURRY! WHILE 1,000 SUITS LAST!

You'll find many delightful styles to choose from. Broken sizes and color assortment.

500 Suits, \$2.98-\$5.98 Values!

500 better Rayon Satin Latest cotton dressmaker suits! They're completely lined with jersey. Sizes 34 to 42.

**\$2.79**

### New Dirndl Coat DRESS

Inspired by the Vogue for Swedish Fashions

**\$1.09**

For Street, Home, Vacation, Sports!

Just the thing for all summer long. Dirndl waist for perfect fit. New stripe pattern on fine fast color Poplin. Predominating colors of navy, brown or duobonnet. Sizes 12 to 18.



Mail, Phone Orders Filled

Call State 1500, local 33. Give size and color. Allow 5 days delivery. Upper Subway, Wabash.

## In WHITE! Only at Mandel's in Chicago! New "Kool-Fabric" Nurses' Oxfords

Look! With the Metatarsal Arch Support!

**\$1.99**

Black or White Kid, Too! Save!

Smartly styled nurses' shoes with new Metatarsal support that insures comfort. Sizes 4 to 9, AA to E.

Upper Subway, Center.

## Clearance! Spreads

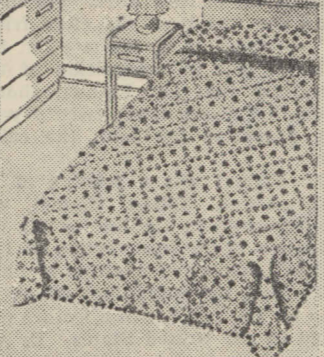
Candlewicks! Chenilles!

LIMITED QUANTITIES **\$2 ea.**

Large assortment of candlewick, all-over patterns, heavily tufted on quality sheeting. Reg. \$3.98 to \$5.49! Full or twin sizes. Also 80 heavy chenille spreads!

Sorry, No Mail or Phone Orders

Upper Subway, State.



Again the Most Famous Sale of Them All!

## SALE! 2,500 New Summer Dresses!

For Street, Business, Afternoon, Evening!

1000 Made to Sell for \$3.95  
925 Made to Sell for \$4.95  
225 Made to Sell for \$5.95  
240 Made to Sell for \$6.95  
110 Made to Sell for \$7.95

**\$2**

SIZES FOR MISSES! WOMEN! LARGER WOMEN! JUNIORS!

• Pure Silk Twin Print Suits • Genuine Rayon Frost-Lin  
• All-Over Embroidered Rayon Chiffons • Evening Dresses  
• Ice Cool Rayon Satins and Jerseys • Lace  
• Smart Crisaline-type Spun Rayon Print Dresses  
• Black Silk Chiffon and Rayon Marquise Ensembles

All Sales Final.

Lower Subway, Fashion Center.

One of the Largest Textile Manufacturers  
Reorganized! They Sacrificed These Fabrics!

## Sale! 25,000 Yds. DRESS Fabrics!

FABRICS YOU'VE SEEN AT 50c AND \$1 YARD

Brand New Summer Stocks Sacrificed at Usual Cost! YOU SAVE!

**37c** Yd.

• White and Colored Rayon Sharkskins in the Lot  
• White Rayon Pigskins • White Rayon Trifolia  
• Moon-Glo Rayon Crepes • All-over Laces  
• Printed Verifirm Rayon Crepes in New Patterns  
• Also a Grand Assortment of Black Novelty Nets

50-in. Chifonese Rayon **37c** Just 2,800 Yards of New Summer Cottons... **17c** Ninon, Reg. 88c... Yd.

Upper Subway, State.

## Boys' Wash SLACKS

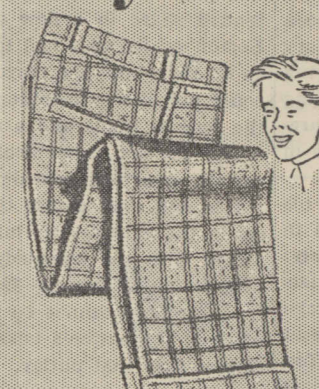
Regular \$1.29 Values!

**88c** STURDY FABRICS

Checks, plaids, stripes and novelty weaves in cool printed and woven fabrics. Dark or light backgrounds. Attractive colors for summer wear. Sizes 10 to 16.

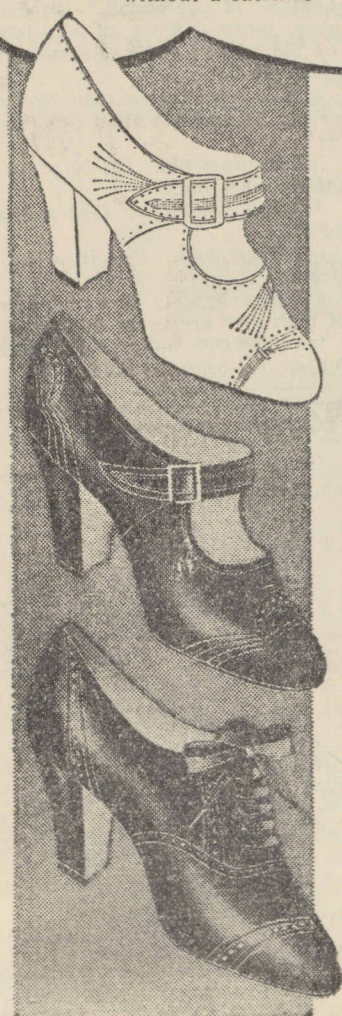
Mail and Phone Orders Filled

Upper Subway, Wabash.



## Half-Yearly Sale

Your opportunity to learn why Adapto Shoes are the choice of thousands of school teachers, professional women, housewives... women must be on their feet the greater part of their busy days... Designed on scientific comfort-assuring principles... of matching finest leathers with the skill of master shoemakers—these ADAPTO SHOES are for those who can no longer be tempted with "bargain shoes"! SO... this is not just another shoe sale... but an EVENT IN SHOES for you who appreciate a saving without a sacrifice



Up to **\$12.95**  
ADAPTO SHOES

Now at—  
**\$6.95**

Original Prices \$8.95, \$10.95, \$11.95, \$12.95

Oxford ties, strap pumps, step-in pumps in immaculate white, black, brown or blue kidskin... sizes 4 to 11 in widths AAA to EE... not all sizes in every style.

AIR COOLED—  
**Lane Bryant**  
101 N. WABASH AVE.

## Brassiere-Top SLIPS

Rayon and Silk Satin

"MAGIC-FIT" Uplift Bandeau Feature!

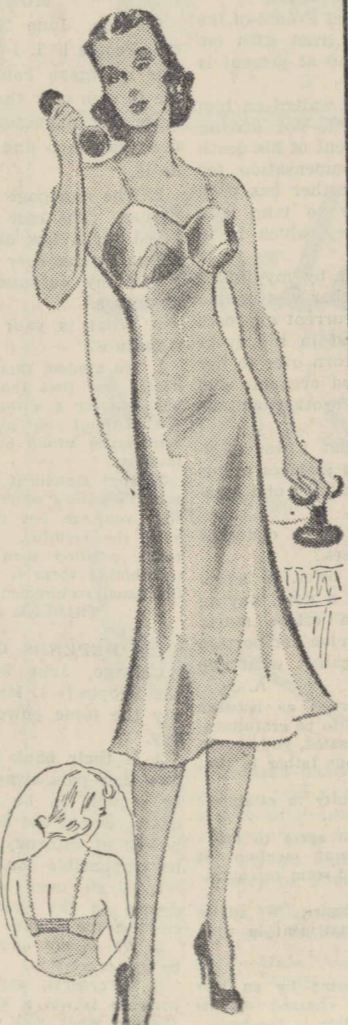
**\$1.09**

Guaranteed Seams

Tearose and White

Especially tailored with elastic in back to mold a perfect figure. 50% Bemberg rayon and 50% silk. Sizes 32 to 40.

Also "Magic-Fit" rayon crepe slips with shadow-proof panel.



Men! Your Chance to Stock Up and Save! Sale! 6,000

## Utica Shirts! Shorts

Even 600 Snap Style Shorts of Another Brand!

The Shorts... 5 for \$1

• Fast color good quality broadcloth  
• Lastest insert in waistband for fit  
• Cut full, balloon seat for leg room  
• Stripes, plaids and small figures  
• Blue, grey, tan or green, 30 to 44

**5 FOR \$1**

The Shirts... 5 for \$1

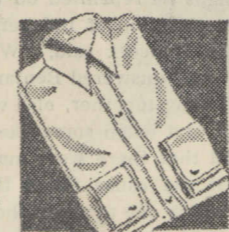
• Snug fitting... plenty of stretch  
• Popular swiss ribbed styles  
• Taped armholes, hemmed bottoms  
• Fine combed yarn. Full cut  
• Sizes 34 to 46. PHONE ORDERS

1200 White Shirts

**88c**

Reg. \$1.19 to \$1.59

To make way for our new Fall stock we are reducing all odd lots and soiled groups. Non-wilt collar attached, 14 to 17.

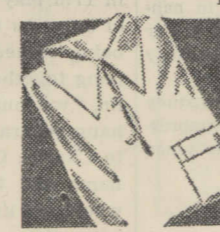


1500 Sports Shirts

**59c**

Reg. 79c to \$1 Values!

Crew neck, eyelet, Gaucho or 3-button styles, in knit, rayon and woven fabrics. White, natural, blue, oyster patterns. Sizes S, M or L.



Upper Subway, Wabash.

## Clearance! Men's SUITS

Reg. \$15.90-\$22.50 Values  
NOW AT

**\$11**

For Year 'Round Wear

Look! Even Tropicals!

Light colored all wool twists, dark shades in tropicals, light and dark tweedy mixtures. Regulars, longs or shorts in the group. Even Prep styles!

Upper Subway, Wabash.

