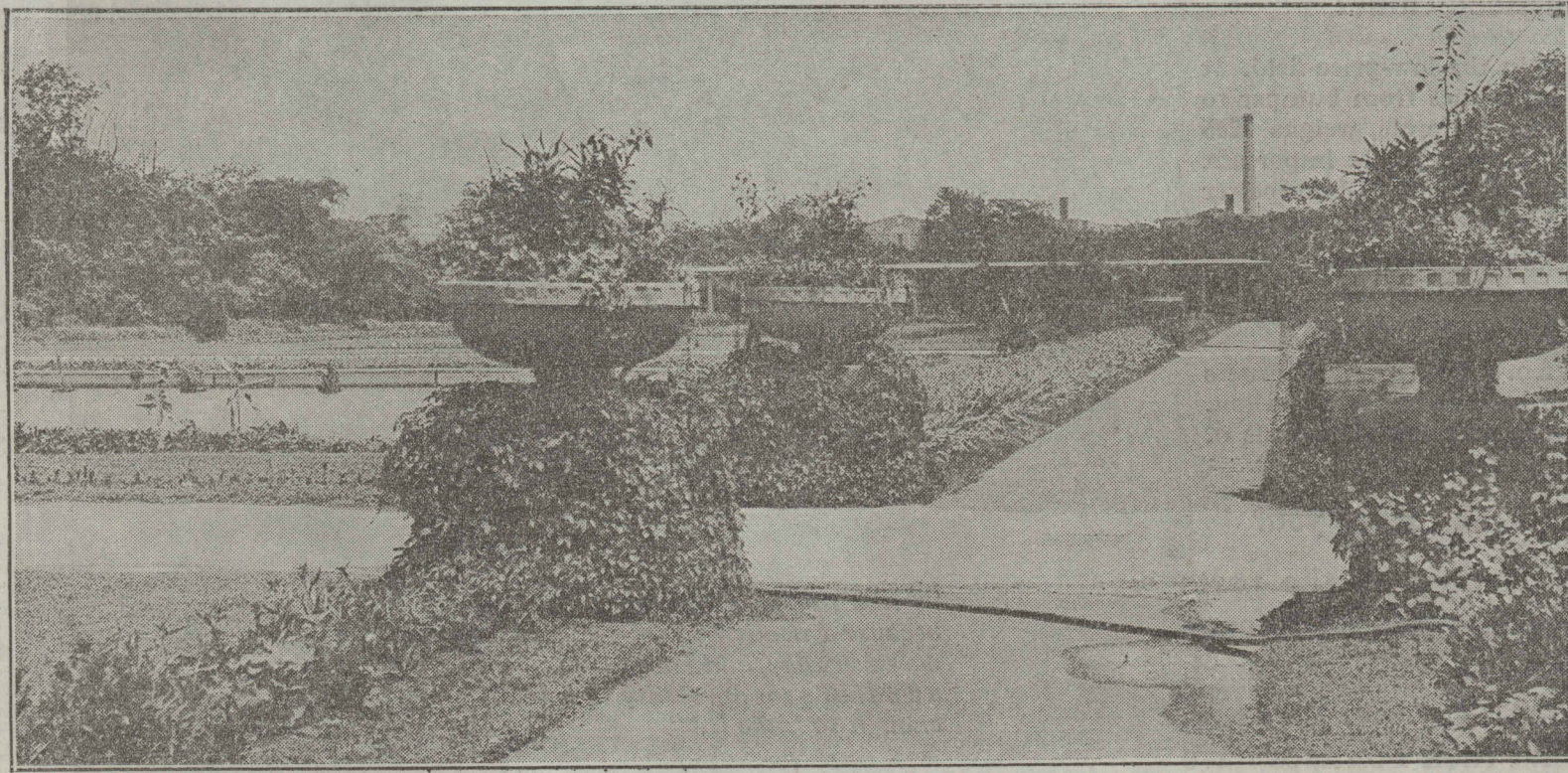


Chicago Invites Visitors to A Century of Progress to Enjoy Its Beautiful System of Parks



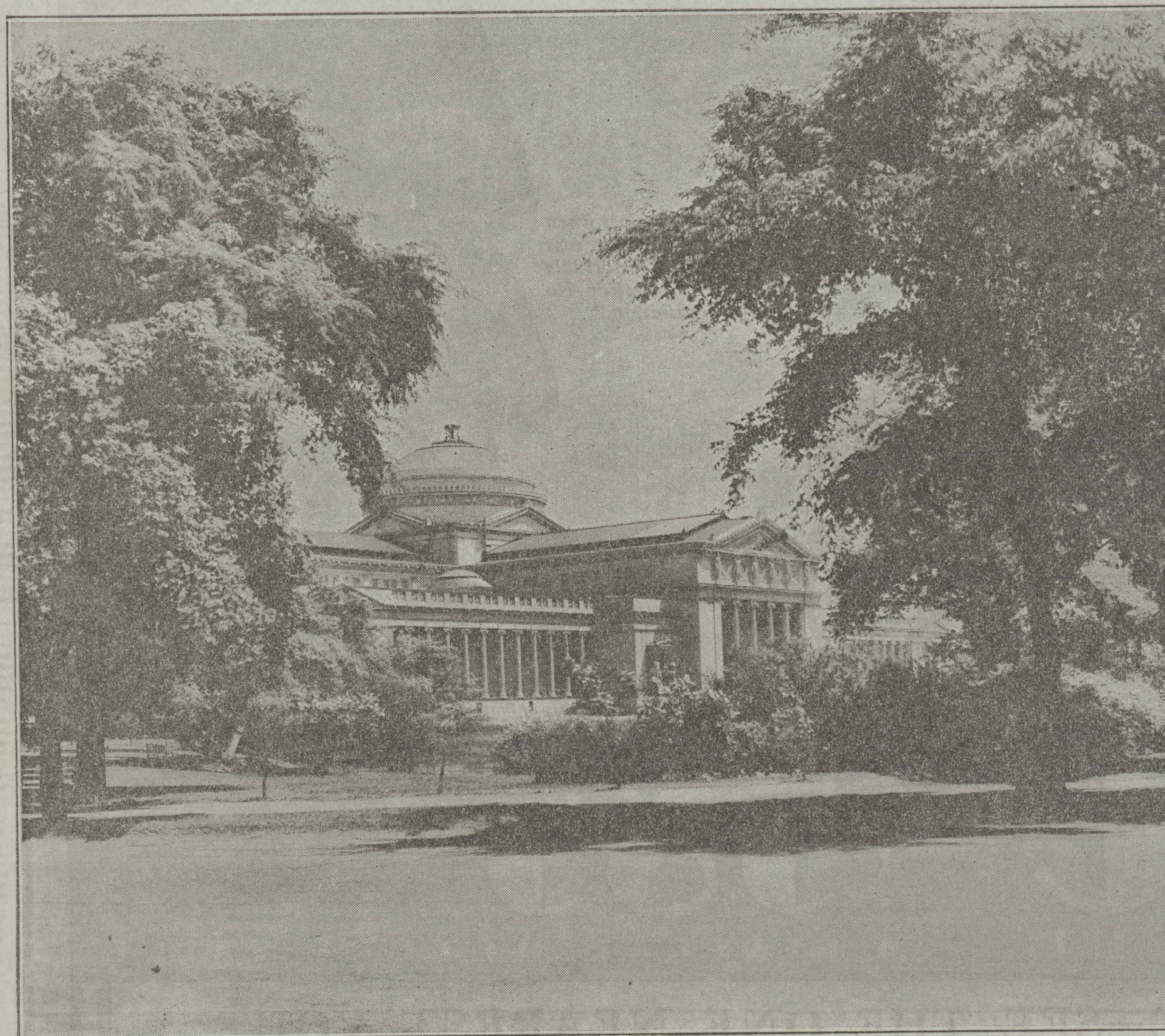
[TRIBUNE Photo.]

GARFIELD PARK ON WEST SIDE OF CHICAGO IS HEADQUARTERS OF VAST SYSTEM; NOTED FOR ITS FAMOUS CONSERVATORY AND TREE LINED BOULEVARDS. World's Fair visitors can enjoy this view looking west across the east lagoon in Garfield park toward the administration building, constructed at cost of \$650,000. Garfield park itself contains 187 acres and was acquired in 1869. The west park system, of which it is part, is 35.5 square miles in extent and includes 32 miles of boulevards. The other principal parks of this district, each an attractive center for visitors, are Humboldt, Douglas, Union, and Jefferson.



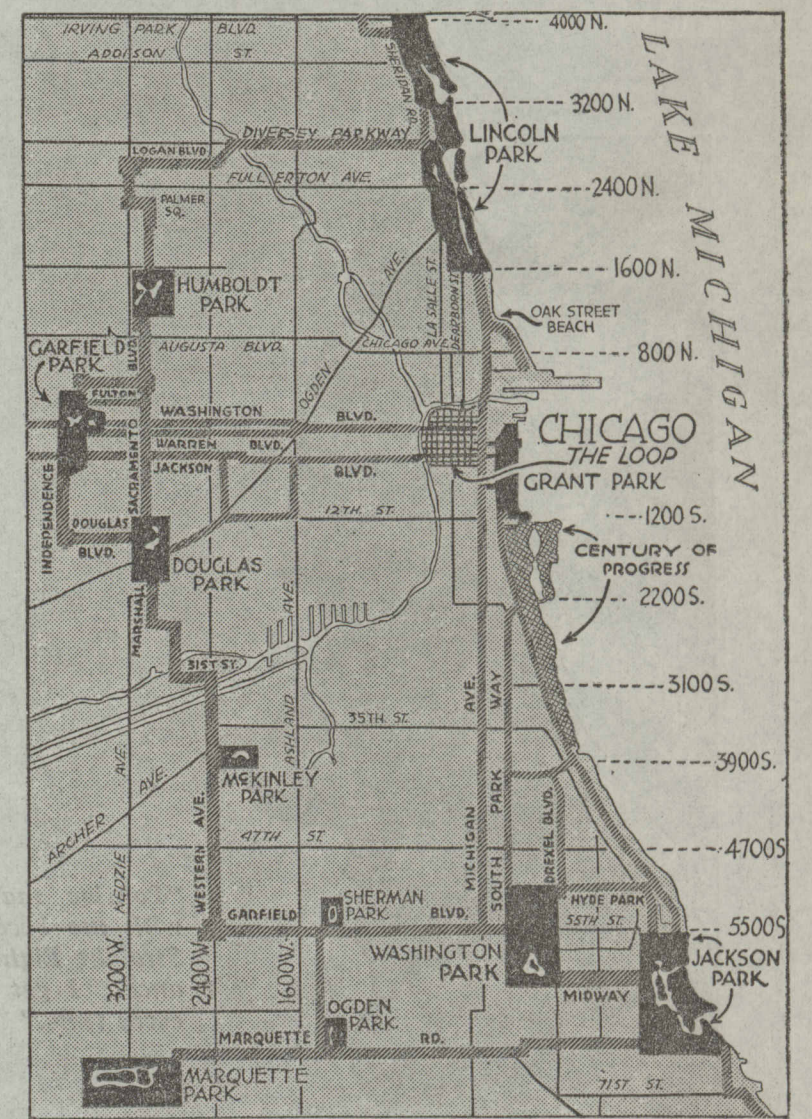
[TRIBUNE Photo.]

OUTDOOR GARDENS ATTRACT THOUSANDS OF VISITORS TO GARFIELD PARK; ABOUND IN FLOWERS. A view of the outdoor gardens in the west side park, which are an attraction in addition to the big conservatory. The conservatory and gardens, with their periodic flower shows open free to the public, are well worth the time World Fair visitors would spend in inspecting them. All the parks of Chicago are easily accessible by various public carrier routes.

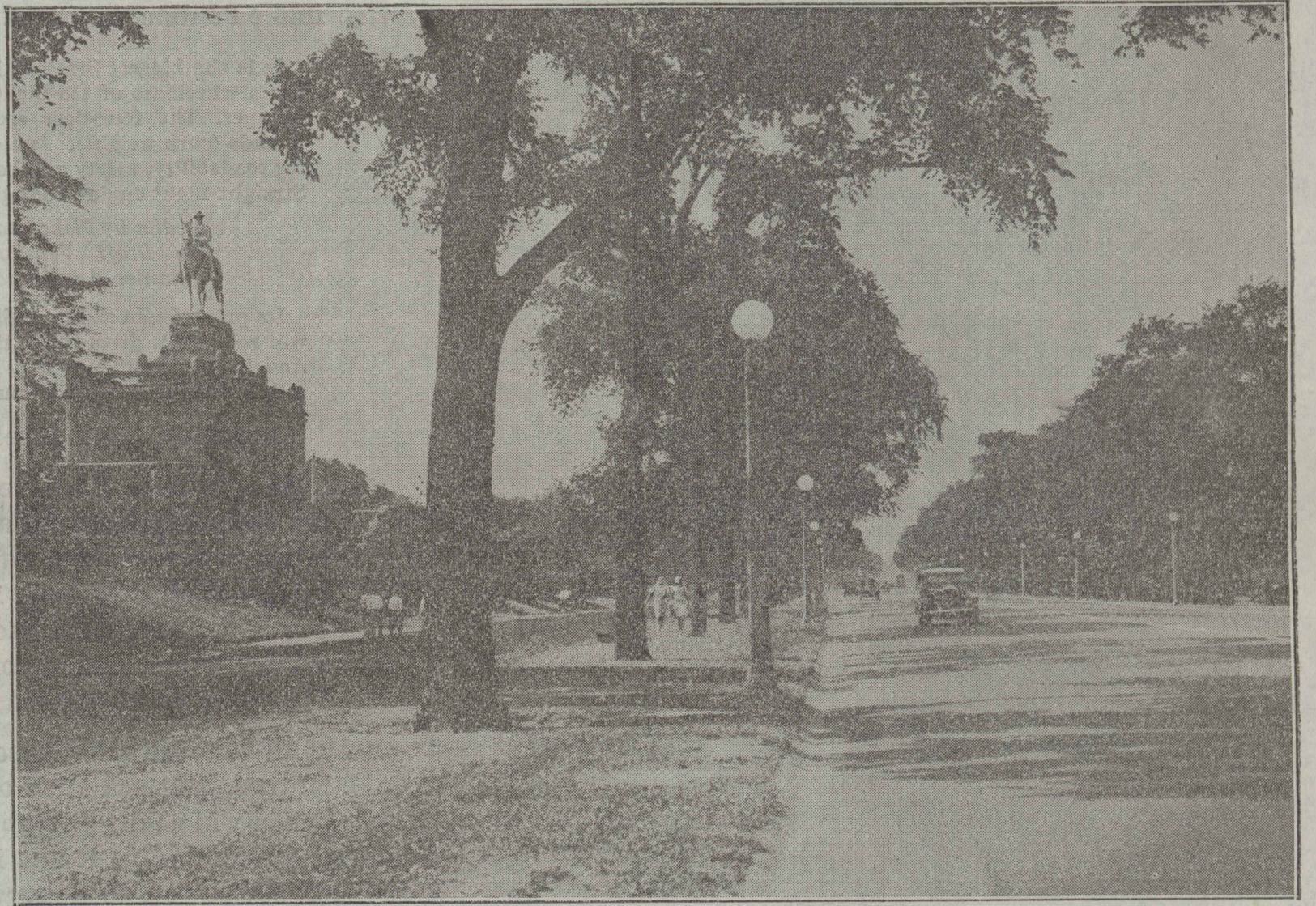


[TRIBUNE Photo.]

JACKSON PARK ON SOUTH SIDE A PLACE OF BEAUTY INCLUDING MUSEUM OF SCIENCE AND INDUSTRY. View looking east from the west drive in Jackson park showing part of museum, which is the rebuilt Fine Arts palace of the World's Columbian exposition, a structure known over the world for its beauty. Jackson park is part of the south park system and is the city's largest park, embracing 542 acres. Its golf courses and lagoons are ever popular spots.

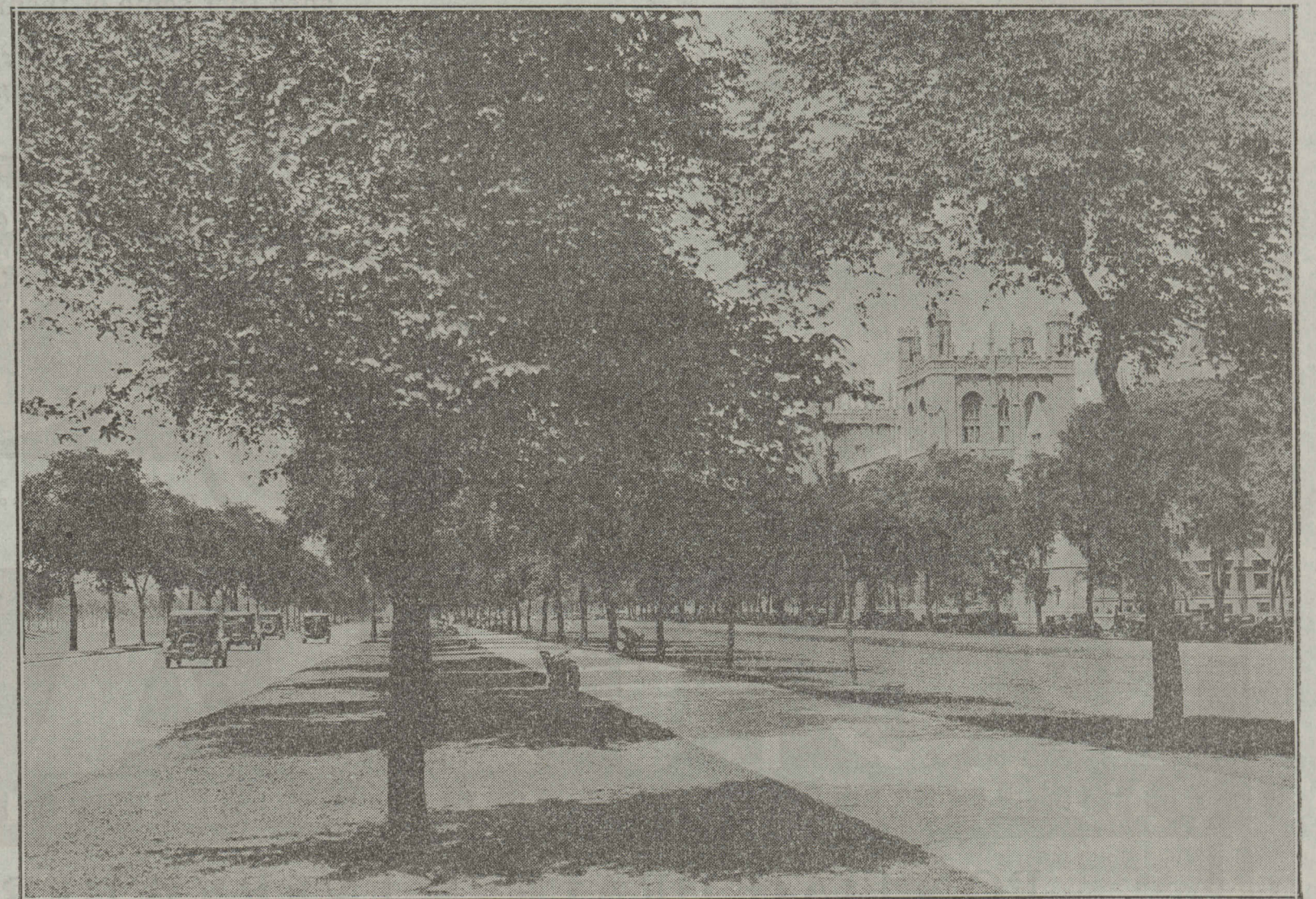


MAP SHOWS PARK SYSTEMS OF CHICAGO. The network of park systems and boulevards of Chicago shown on map. The principal systems are the Lincoln, south, and west; each, in addition to its major park, including many small ones.



[TRIBUNE Photo.]

LINCOLN PARK ON NORTH SIDE NOTED FOR ITS BEAUTIFUL DRIVES, BEACHES, ZOO, AND LAGOONS. The center drive in Lincoln park, looking north, with the Grant monument on the left. This park, like Jackson, borders on Lake Michigan and includes 323 acres of beautiful trees and lawns. It is part of a system including fourteen square miles and took its name under a resolution of the common council adopted on June 5, 1875.



MIDWAY PLAISANCE BETWEEN JACKSON AND WASHINGTON PARKS IS AN AVENUE OF VERDURE. Looking west on the Midway from Woodlawn avenue, with the Harper Memorial library of the University of Chicago on the right. The Midway connects Jackson and Washington parks, both part of the south park system. It takes its name from the part it played in the last Chicago World's Fair. It offers a drive which motorists visiting Chicago for the Fair should not miss.

[TRIBUNE Photo.]