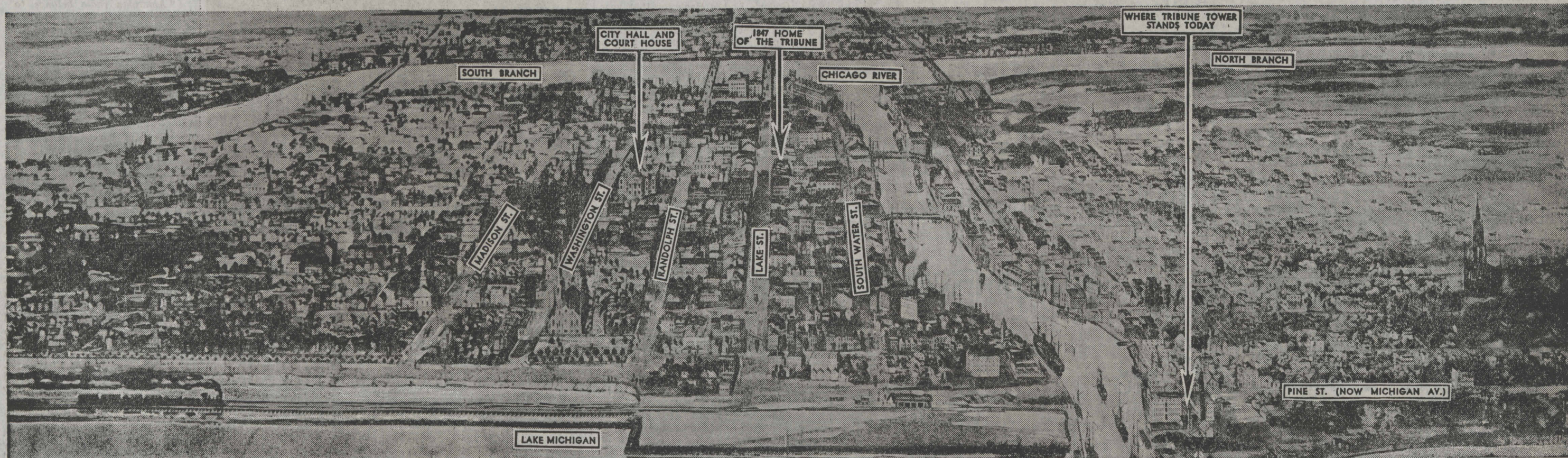
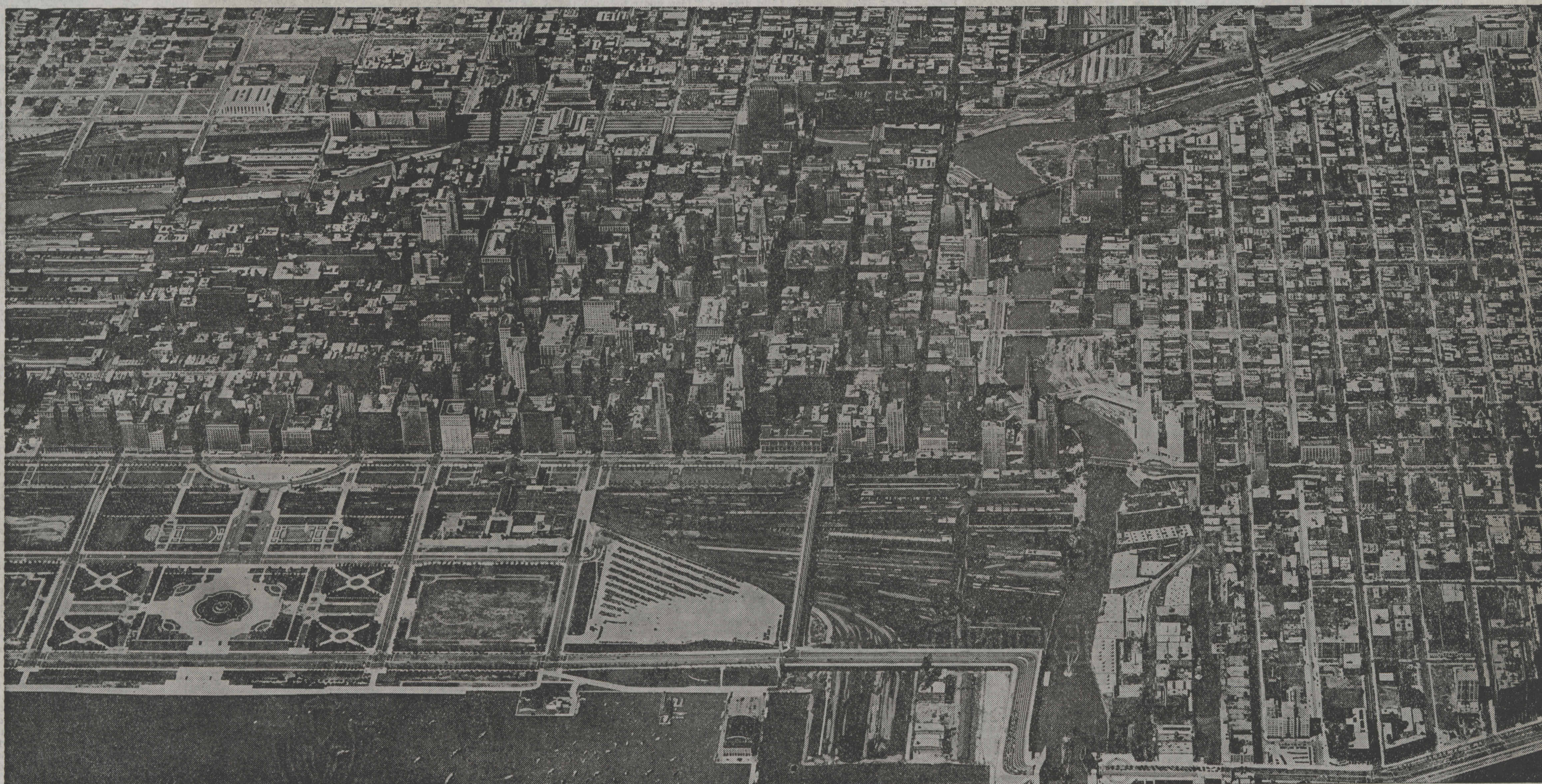


Two Views of Chicago, Less Than 100 Years Apart—Tribune Makes Own Paper in Canadian Woods

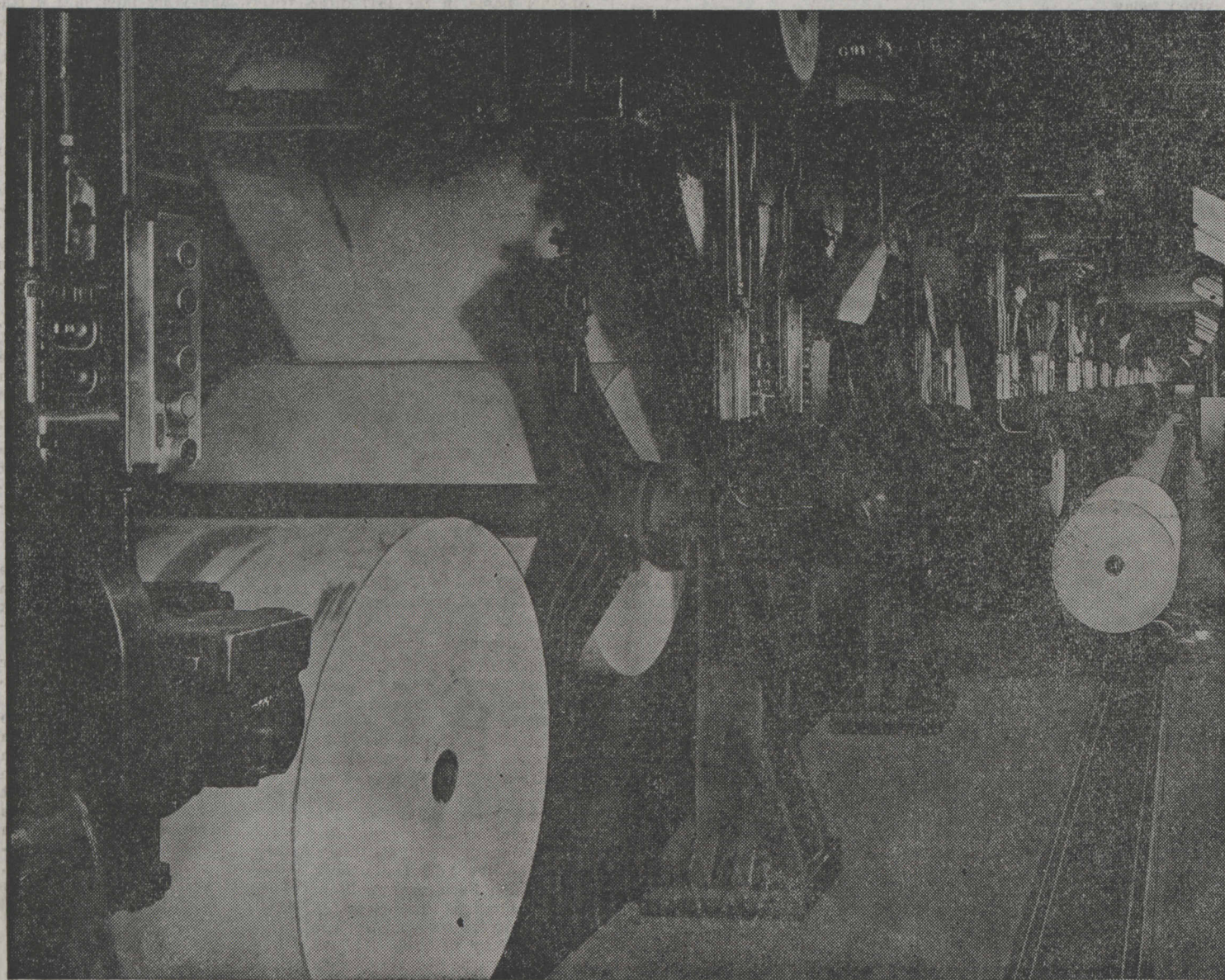


THIS VIEW OF CHICAGO, A BIRD'S-EYE VIEW FROM THE LAKE SHORE, SHOWS HOW THE CITY LOOKED IN 1853, SIX YEARS AFTER THE TRIBUNE WAS FOUNDED



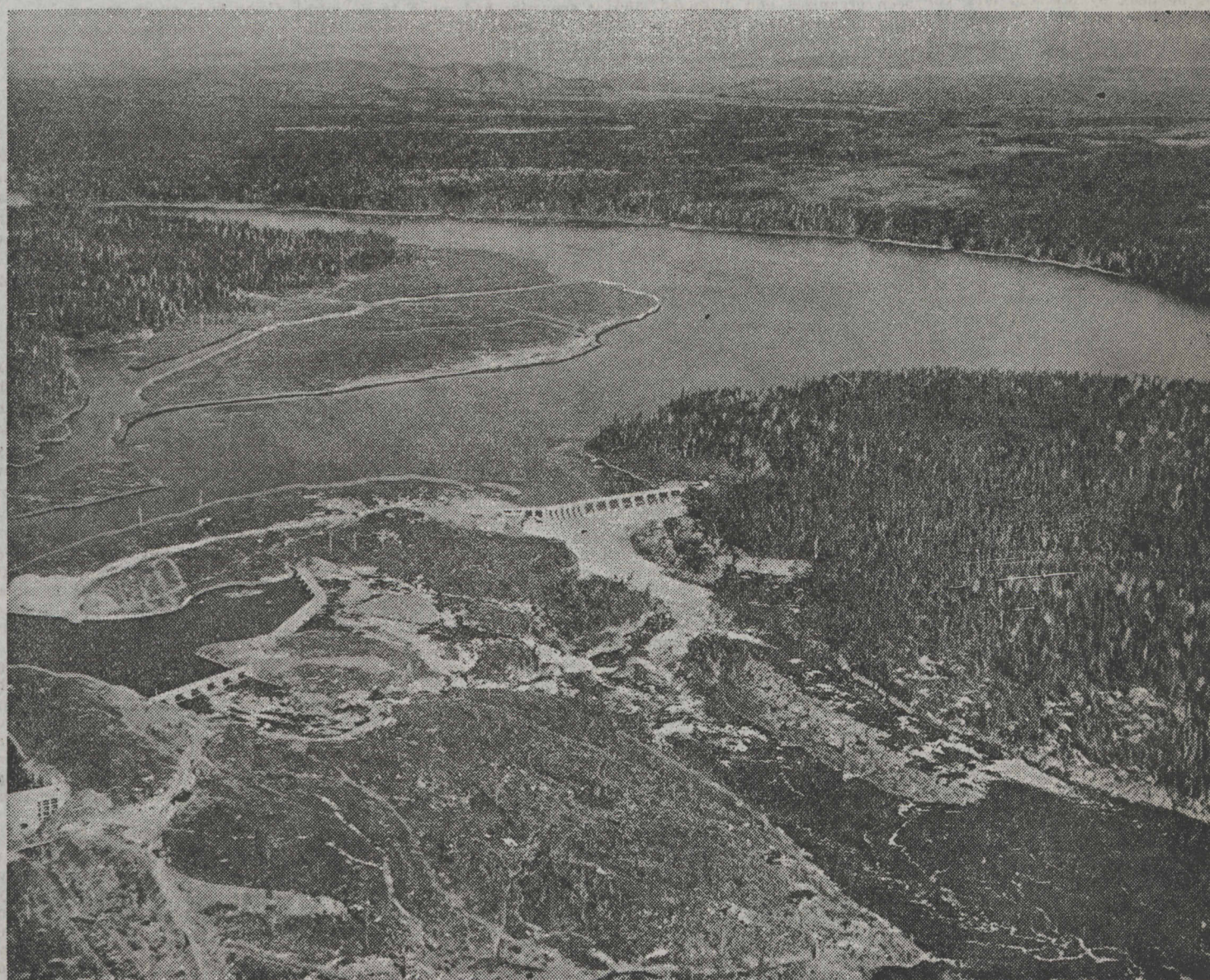
[Chicago Aerial Survey Photo.]

CHICAGO'S CENTRAL DISTRICT AS IT APPEARS TODAY. THE AREA IN THIS AERIAL VIEW INCLUDES APPROXIMATELY THE SAME AREA AS THAT IN THE 1853 VIEW



[TRIBUNE Studio Photo]

From long rows of rolls like these, paper is fed into Tribune presses, printing thousands upon thousands per hour, for the more than a million subscribers who buy each day's issue.



[TRIBUNE Photo.]

Keating dam on Outarde river in province of Quebec, built by The Tribune to supply power for its Baie Comeau, Que., paper mill. It stands 232 feet high in a Canadian forest wilderness.