

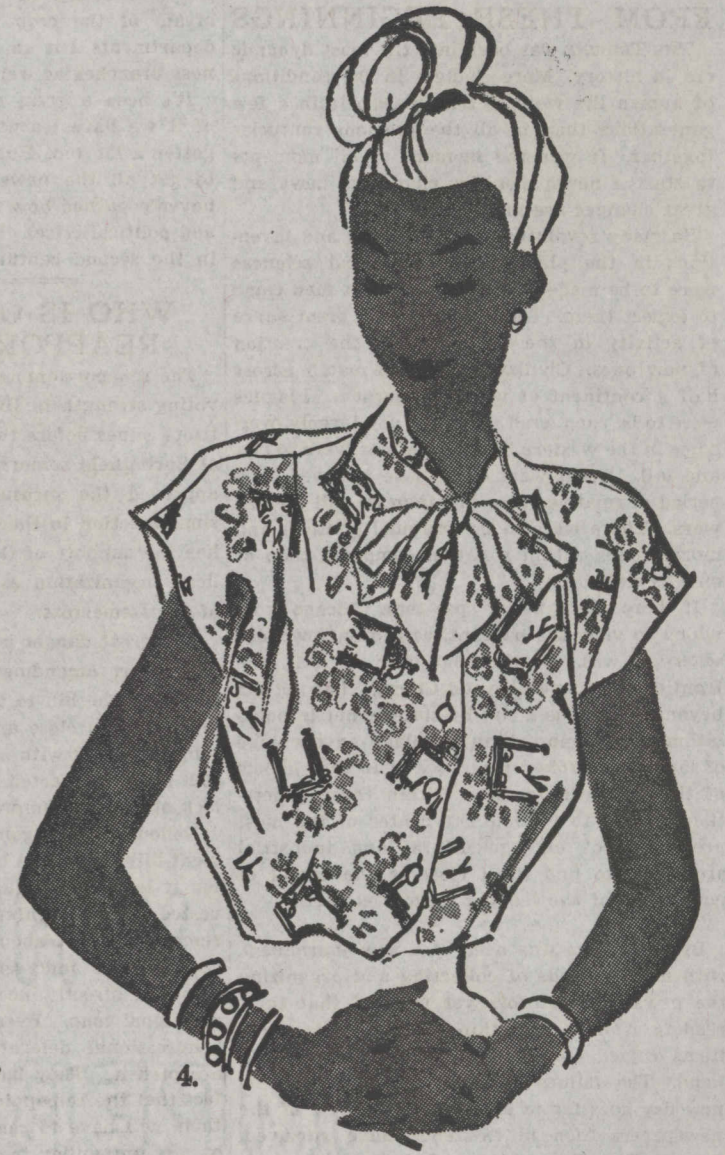
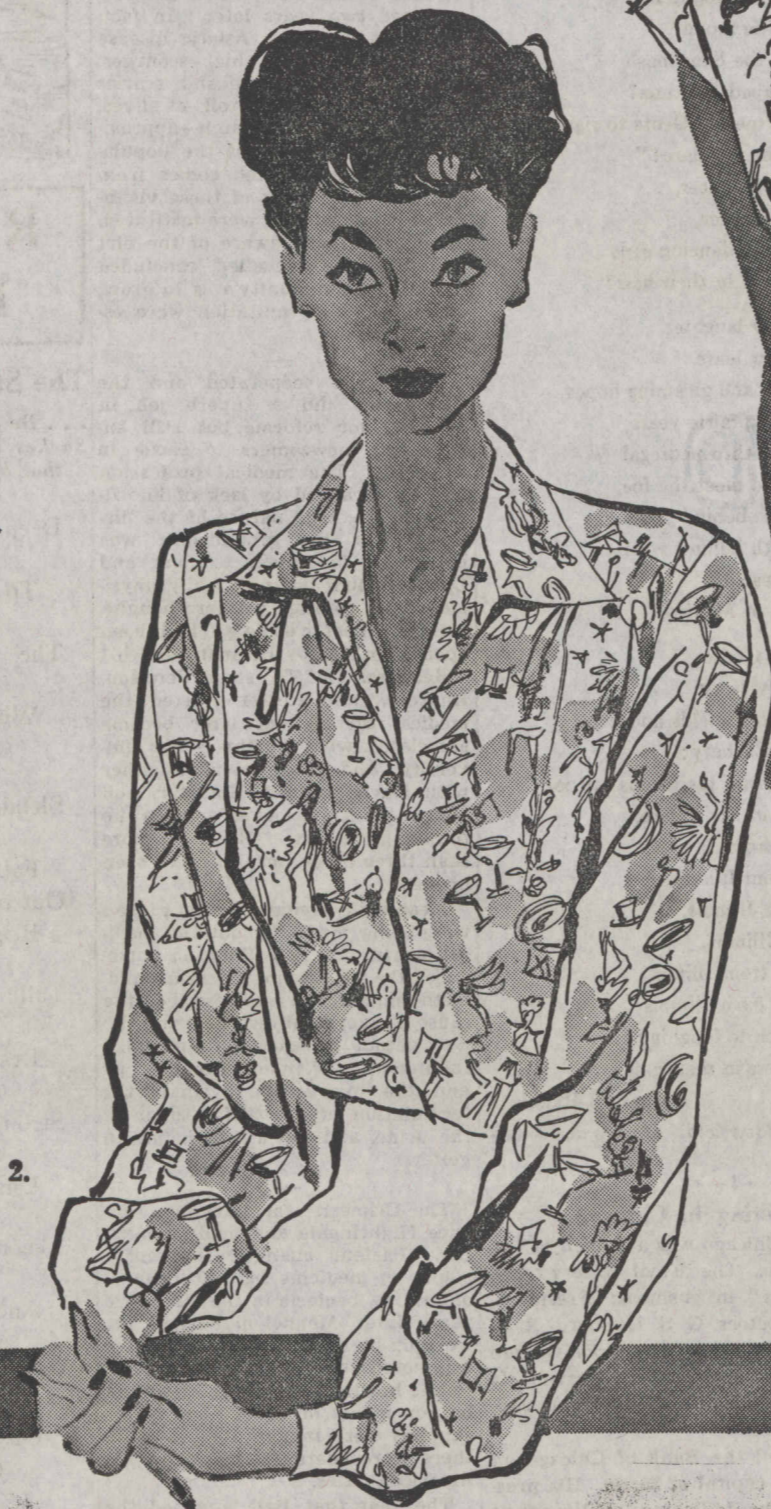
Store Hours, 9:15 to 5:45

Marshall Field & Company

They'll cause admiring comment wherever you go!

Judy Bond blouses in gay, conversational prints

All modestly priced at **\$3⁹⁵**



Such bright splashes of color to liven your summer suits and skirts. Easy-into, button-down-the-front styles with pretty imitation pearl buttons, and clever touches in styling. They're all nicely made in rayon crepe, all sizes 32 to 38—come in for yours today. *Blouses—*

First Floor, Middle, State. Also Evanston, Oak Park and Lake Forest

- 1. Peplum Front Effect! White, maize, pink or aqua.
- 2. Long-Sleeved Shirt! Pink, blue, gold or aqua.
- 3. Gay Horse Print! Blue, pink, maize, beige or aqua.
- 4. Bow Tie Neck! White, pink, aqua or beige.

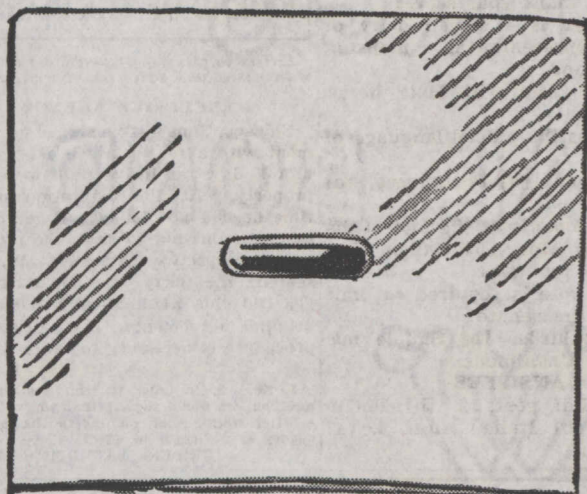
If you can't come in, write or phone **Personal Shopping Service** State 1000 from Chicago; Enterprise 4242, toll-free from most suburbs.



They're easy to keep looking spick and span

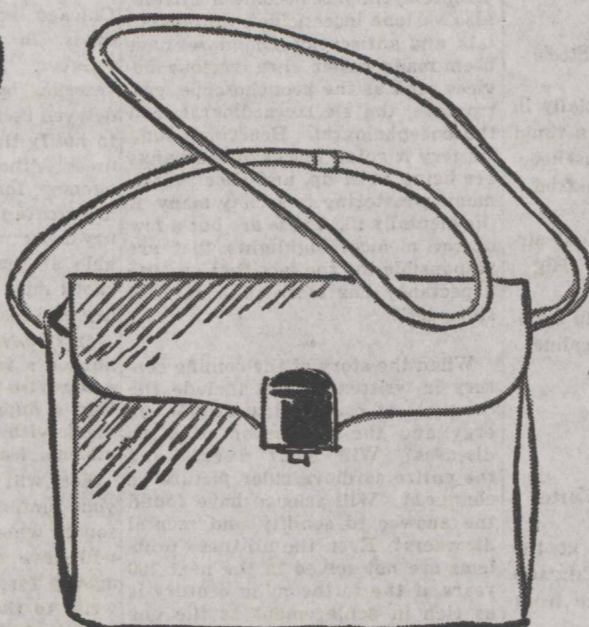
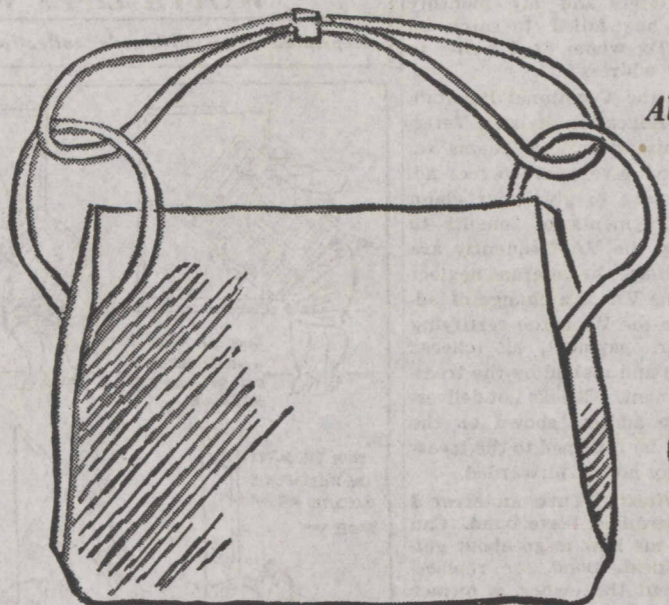
fresh white bags in washable pique plastic

specially priced at **\$5***



Under your arm, over your shoulder or in your hand, these bags will be a crisp, clean summer accent. Made to sell for more, they're a real find at this price—so choose your favorite style today. All are lined in black rayon faille.

*Handbags—First Floor, South, State
Also Evanston, Oak Park and Lake Forest*



*Plus Federal Excise Tax

They're patterns you've loved in dark colors.

becoming white Peacocks in kid and suede

\$12⁹⁵ and \$13⁹⁵

Now in white—these pretty styles that have been winter favorites, because of their smart lines, comfy Cuban heels, fine Peacock fit.

Choose yours today and enjoy their flattery through the summer, too.

Fashion Classic Shoes—

Fifth Floor, Middle, Wabash

