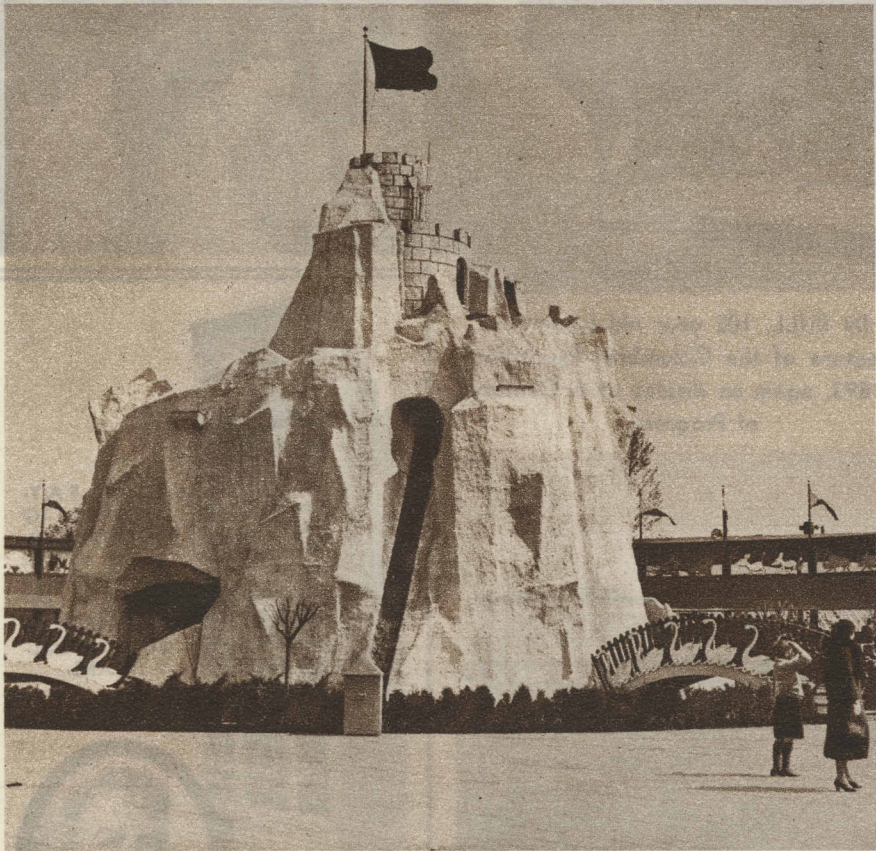


CHICAGO'S SKYLINE IN 1907



THE "MAGIC MOUNTAIN" on the Enchanted island at the World's Fair.  
(Associated Press photo.)



A CORNER of A Century of Progress Administration building.

**RATES:**

**\$2.50**  
Single

**\$4.00**  
Double

Ample Free  
Parking Space

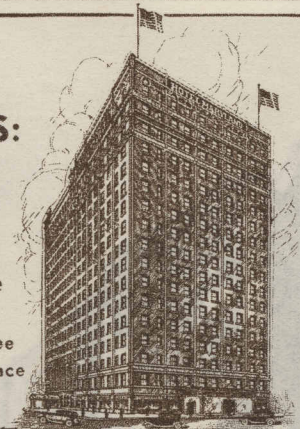
**400 ROOMS—400 BATHS**  
On the Gold Coast  
One Block West of Michigan

Convenient to Loop and World's Fair  
Excellent Restaurant Popular Prices

**HOTEL MARYLAND**

**900 Rush Street at Delaware.**

William S. Mitchell, Manager



*Go by* **STREET CAR**  
*Convenient*  
*Economical*



THE Century of Progress Exposition and any point in the City of Chicago can be reached conveniently by the Chicago Surface Lines.

The low fare of 7 cents with free transfer privileges makes Surface Lines transportation the most economical to be found anywhere.

The average ride of some 2 million passengers daily is more than 4 miles and it is possible to ride 37 miles for one fare.

Street cars take you anywhere.

*80 Per Cent*  
**Use STREET CARS**

The Chicago Surface Lines is the largest street car system in the world. It carries 80 per cent of the local transportation load of Chicago. Write for sight-seeing guide—it's free.

**THE CHICAGO SURFACE LINES**

Fifty-Six Years of Service to the Printing Industry

**SAM'L BINGHAM'S SON MFG. CO.**

—MANUFACTURERS OF—

**Printers' Inking Rollers**

*The Largest and Most Complete Establishment of the Kind in America.*

*Rollers Straight, True, and Free from Pin Holes. Special Rollers Adapted for Fast Newspaper Web Presses.*

OFFICE AND FACTORY:

**201-207 SOUTH CANAL STREET.**

**1877**

**1933**

Photographic Reprint of Our Advertisement in the Golden Jubilee Number of the Chicago Tribune June 10, 1897

**H. P. REGER & COMPANY**

Contractors of High-Class Installations of

**HEATING . . PLUMBING**  
**. . VENTILATING . .**

In Hotels, Office Buildings, Power Houses, Industrials, and other types of buildings Requiring High Class Plants.

Installations made Anywhere in the United States.

**1501 EAST 72ND PLACE, CHICAGO**

**TELEPHONES: Plaza 5700-1-2-3-4**