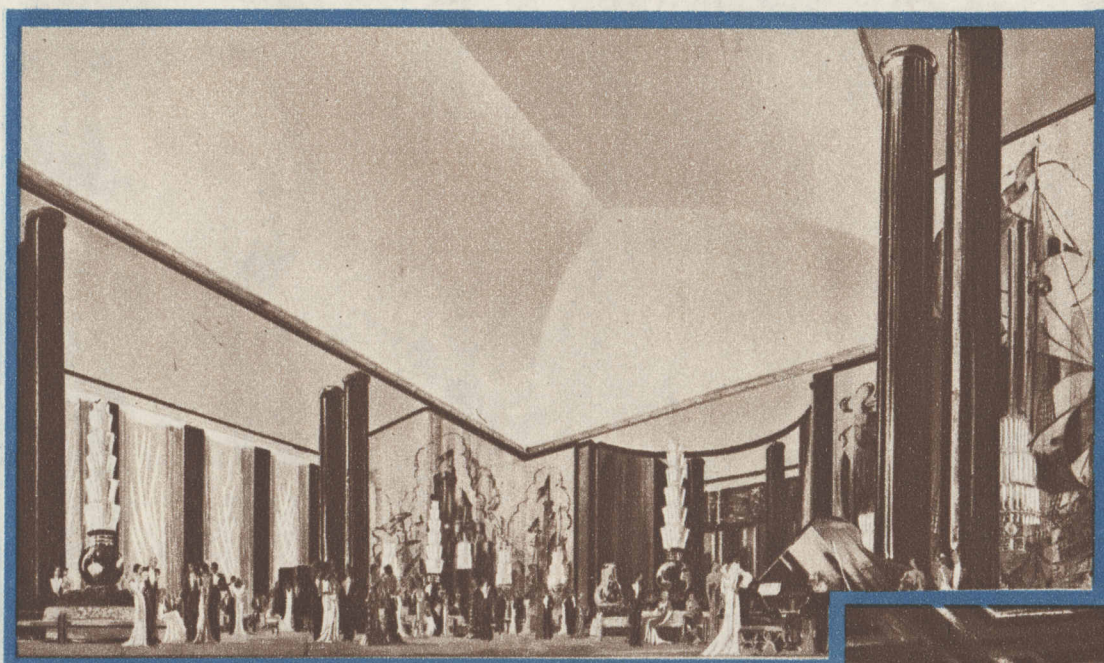


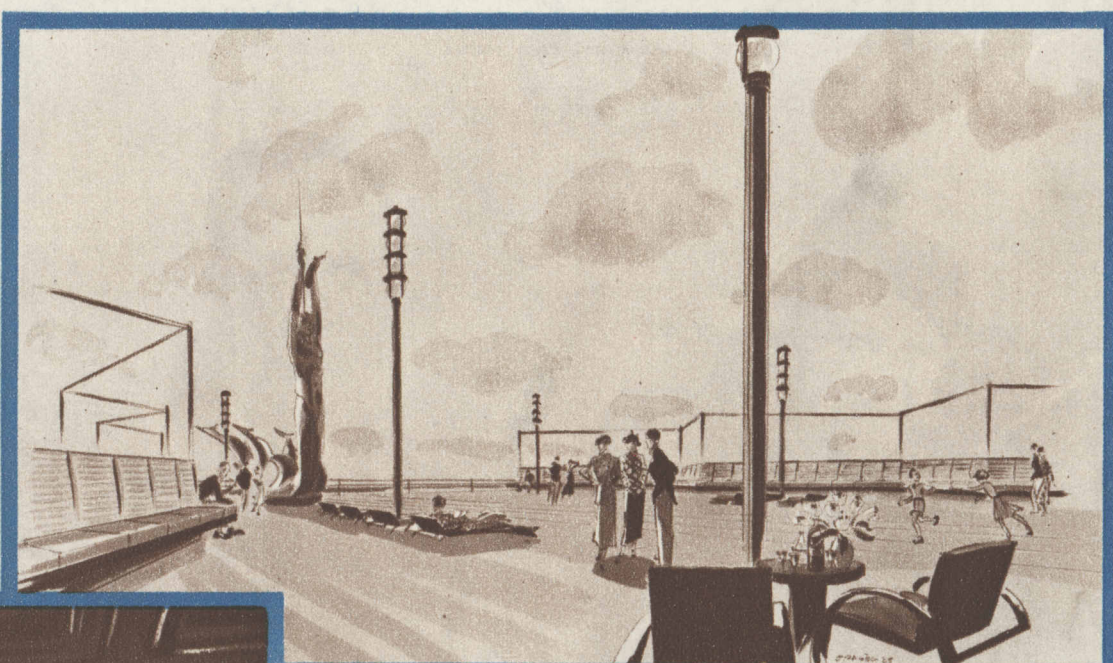
# THE "NORMANDIE"



**THE GRAND SALON**—A superb setting for the evenings "Normandie" passengers will spend between their departure from New York and their arrival at Plymouth or Le Havre.

**A DE LUXE CABIN**—Spacious, charming, luxurious—an example of the inventive genius of modern French decoration, in the use of brilliant color, rare woods and unusual fabrics.

★ Next month, the "Normandie" . . . by far the largest vessel afloat, luxurious . . . modern . . . beautiful . . . will arrive in New York for her American debut.

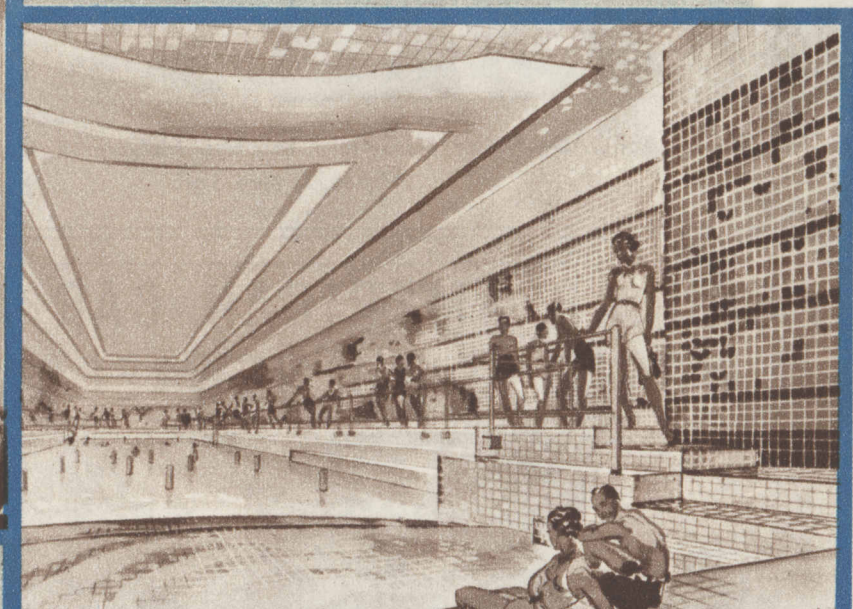


**THE BEACH DECK**—Keen salt air . . . open, unobstructed space . . . where you can lounge in the sun . . . read . . . or have your meals served. Or, at night, dance under the stars.

**THE SWIMMING POOL**—Over 80 feet in length, completely provided with dressing rooms, gymnasium, hydrotherapeutic steam baths, massage rooms, and a waterside cafe.



**THE DINING-SALON**—Majestic in its balanced beauty, completely air-conditioned, walled in molded glass. Eight private dining-rooms at your disposal whenever you wish.



THE arrival in New York harbor of the gigantic super-liner *Normandie* will inaugurate a new era in transatlantic travel. She will set new standards of luxury and speed, steadiness, comfort and safety. From keel to crow's-nest, she is different . . . not merely the largest liner afloat (79,280 tons) . . . but in almost every respect a *new kind of liner*.

Her enormous size does not mean that she will carry more passengers than any ship has ever carried. . . . It means that each passenger will have more space. The dimensions of her dining-salon . . . walled in molded glass . . . air-conditioned . . . and decorated by the foremost artists and craftsmen of France . . . are breath-taking. Her sun deck, clear of all obstructions, stretches two city blocks in length. She has a permanent theater, seating nearly 400, and a beautiful chapel. In every class, her

rates meet the requirements of a moderate budget. The size of her staterooms . . . virtually all have a luxurious bath or shower, with both fresh and salt water . . . will afford new scope for the kind of gracious living which French Line passengers have come to expect of our ships. Her cruiser bow and the turtleback extending over the foredeck enable her to take the roughest seas smoothly, without loss of speed. Her electric drive reduces vibration to an absolute minimum. Her radios are in constant touch at all times with both Europe and America.

Even to see this wonder-ship will be a thrilling experience. And you cannot see her without wanting to travel on her. Your Travel Agent will be glad to tell you more about the *Normandie*, and arrange for early reservations. . . . French Line, James F. Nolan, General Agent, 306 N. Michigan Boulevard.

**SOME FACTS ABOUT THE NEW "NORMANDIE"**

LENGTH . . . . . 1029 feet	PASSENGER CAPACITY . . . . . 2170
BEAM . . . . . 119 feet	OFFICERS AND CREW . . . . . over 1300
GROSS REGISTER 79,280 tons	TURBO-ELECTRIC DRIVE 160,000 h. p.

- She is completely fire-proof, and her safety is further assured by a double hull and by eleven radio and radio-telephonic systems, constantly in touch with both continents.
- She has an extraordinary number of cabins AT THE MINIMUM RATE. She is not an expensive ship to travel on, in spite of her luxury and speed. *In every class, rates meet the requirements of a modest budget.*
- She is equipped with twelve elevators. Practically all cabins have both fresh and salt running water in a tub or shower. Many have private decks.

Other sailings to England and France: ILE DE FRANCE, June 29, July 20, August 10. CHAMPLAIN, June 15, July 5 and 27, August 15. LAFAYETTE, June 1 and 20.



**S. S. "NORMANDIE"** First Arrival in New York, June 3. First Sailing from New York, June 7. Additional Sailings: June 22, July 10 and 31, August 21, September 4.