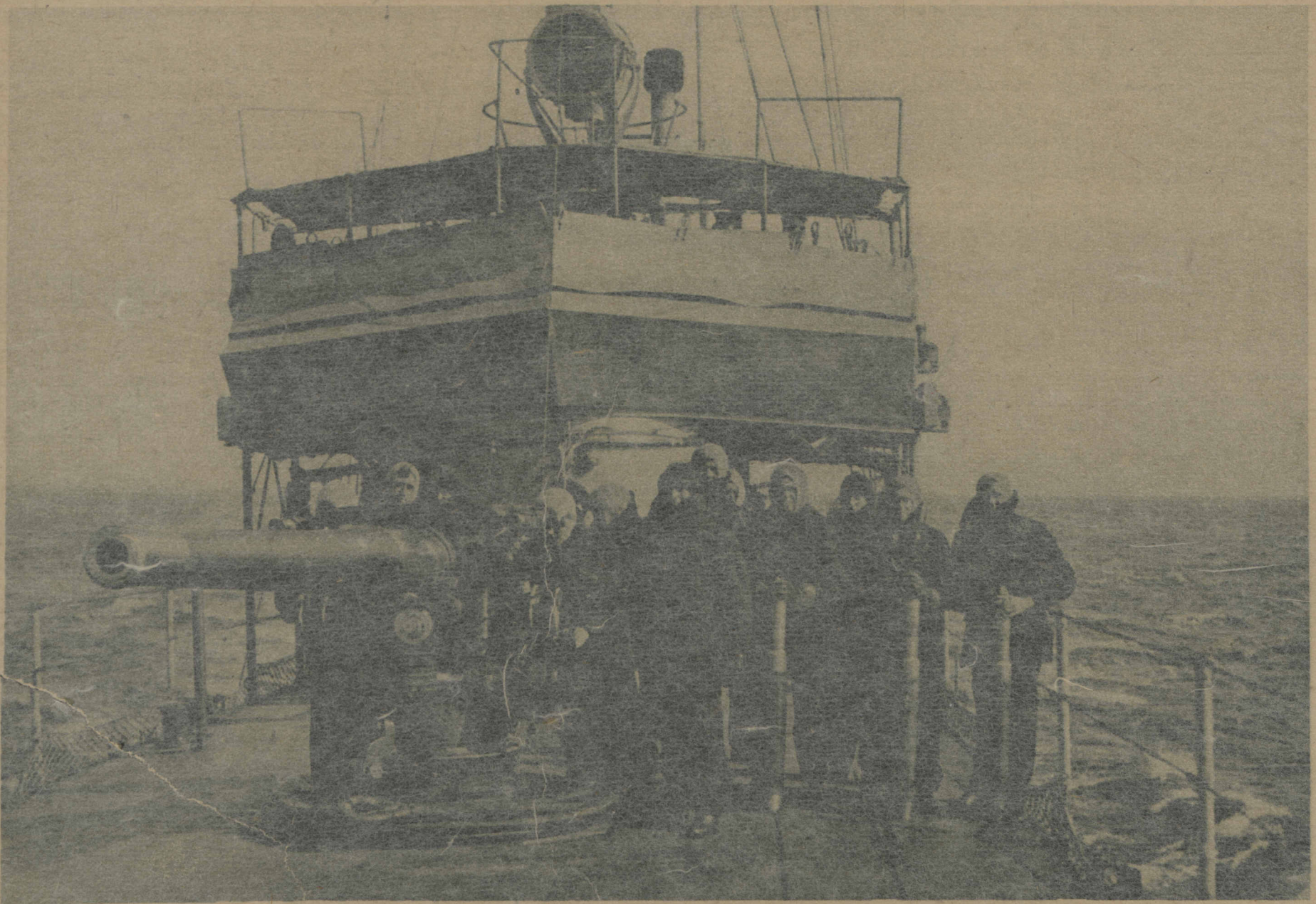


BUCKING A SOU'WESTER—The U. S. monitor Tallahassee, mother ship to a set of submarines, laboring through heavy seas during a squall in southern waters. When the vessel arrived at its destination traces of salt on the stack and decks were evidence of the severity of the weather it encountered.

(Photograph by Central News Photo service.)



"SOMEWHERE ON THE ATLANTIC COAST"—Part of the crew of a United States destroyer scouting for German submarines along the ocean lanes of traffic. They are gathered about a five inch rifle on the forward deck. The crew is equipped with the new mitten caps which have been issued for use in wintry weather in northern waters. (Photograph copyright by International Film Service.)