

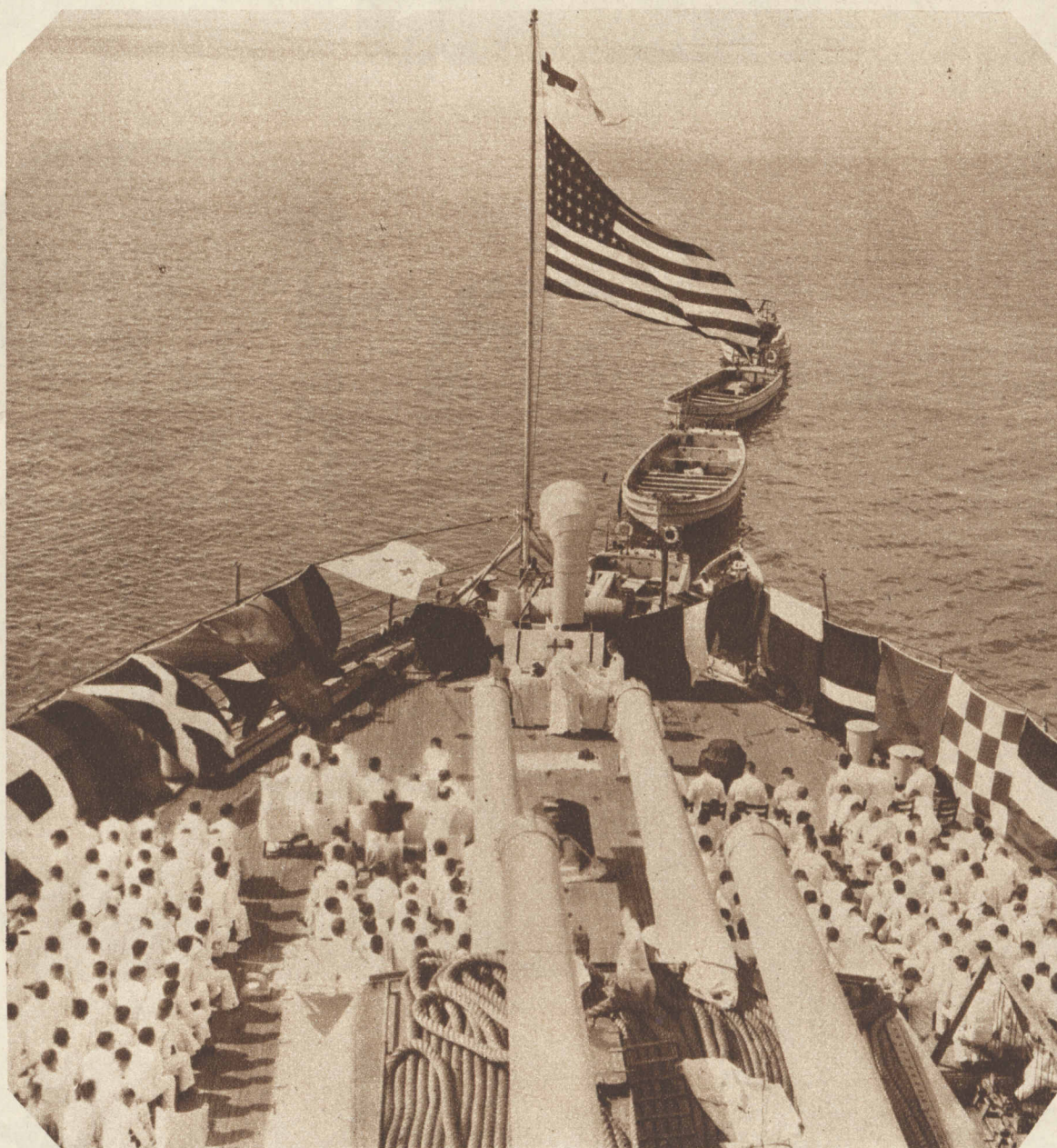
WAR GAMES IN THE PACIFIC: NEW PICTURES OF THE BATTLE FLEET



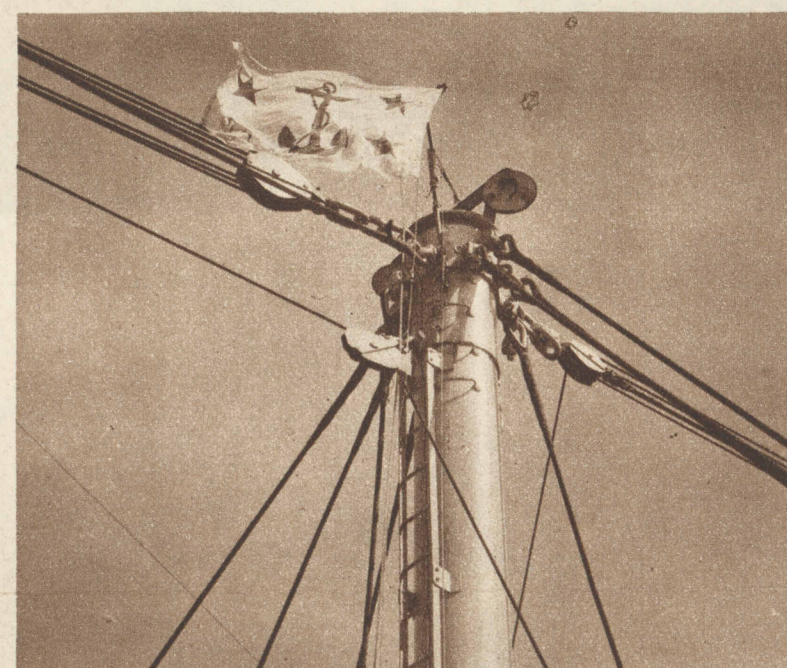
OUT OF THE SUNSET—An unusual silhouette of the battle fleet, which continued maneuvers in the Pacific after the close of the war games in which the defenses of the Panama canal were tested. In the van are the California, the New York, and the Maryland.
(Chicago Tribune Press Service photo.)



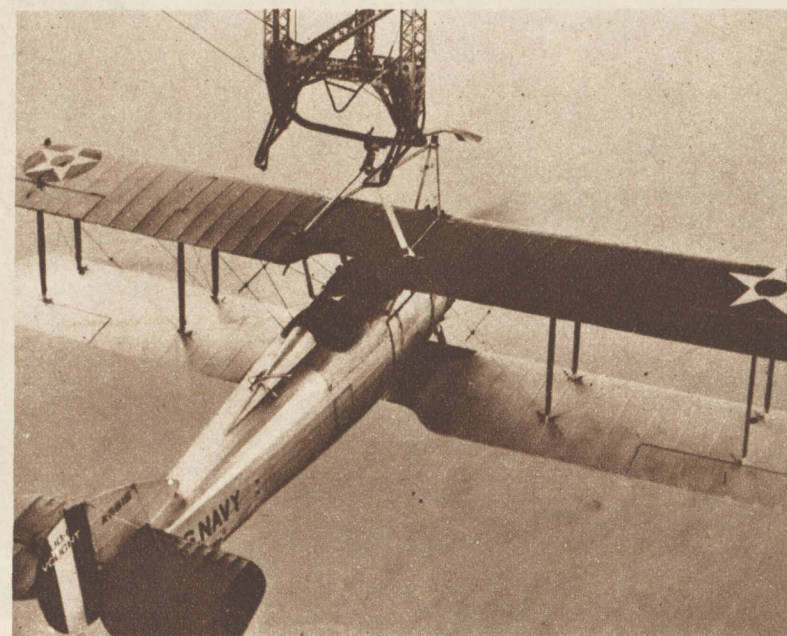
AN OPPORTUNE TARGET—One of several waterspouts sighted during Pacific maneuvers, as seen from the Texas. A shot from the ship put this specimen out of action.
(Chicago Tribune Press Service photo.)



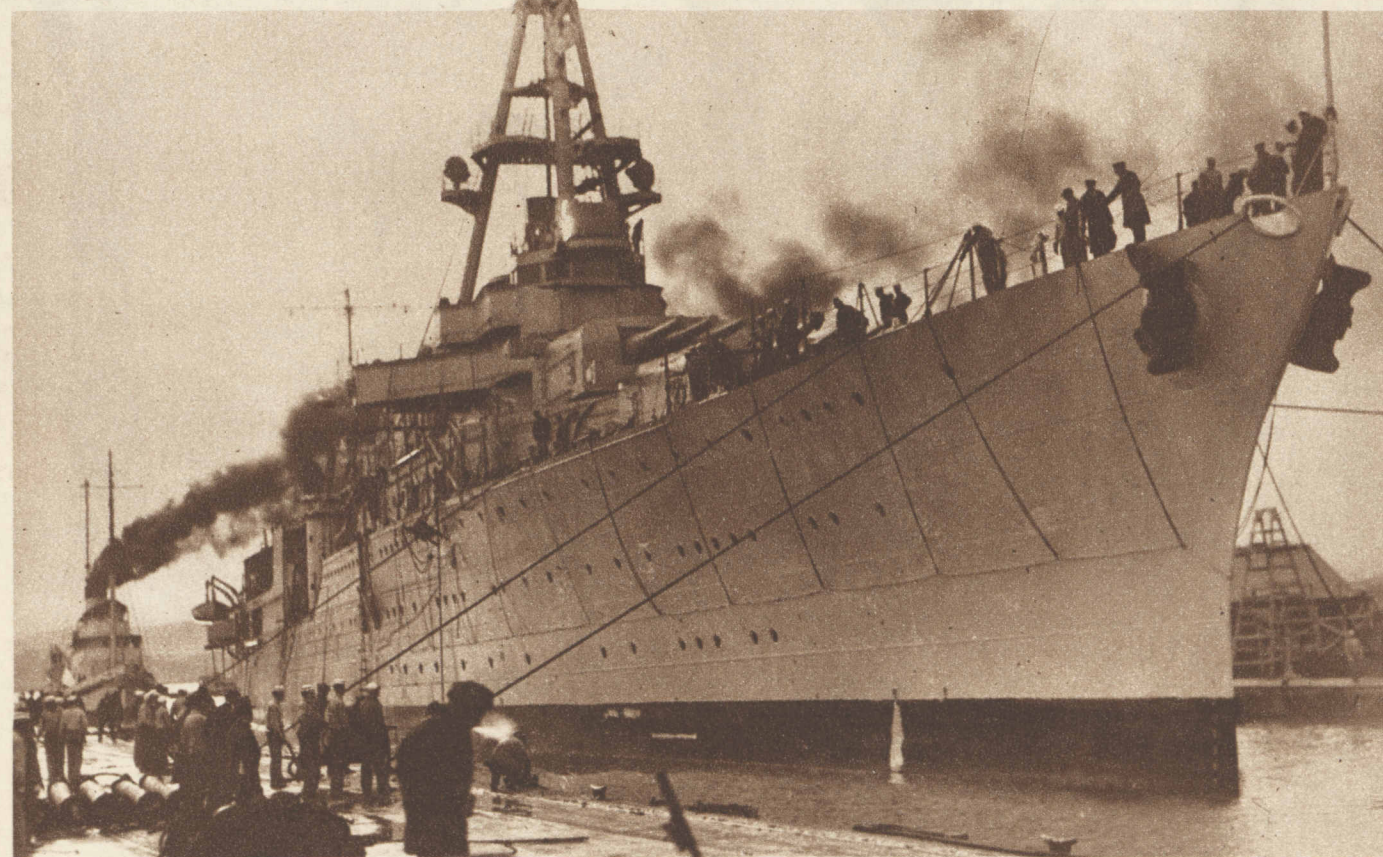
THE CHURCH FLAG FLIES ABOVE THE STARS AND STRIPES during services aboard the Texas in Panama bay. It would not fly there if it could be prevented by former Senator Heflin of Alabama, who waged and lost a fight against the practice in the late congress.
(Chicago Tribune Press Service photo.)



THE FLAG OF AN OFFICIAL WITNESS—The pennant of the assistant secretary of the navy for aviation, David Ingalls, flying above the mastship Patoka. (Acme photo.)



HOOKED—Somewhere in the Pacific a navy plane anchors itself to the Los Angeles, which itself made use of the Patoka's mooring mast during the maneuvers.
(Chicago Tribune Press Service photo.)



(Associated Press photo.)



(Acme photo.)

THE NEW CRUISER CHICAGO JOINS THE NAVY—Second American cruiser to bear the name Chicago and the last of the eight 10,000 ton cruisers authorized by congress in 1924, Admiral J. V. Chase's flagship is placed in commission at Mare Island navy yard. At the left, the cruiser lying alongside the dock in the navy yard. At the right, the formal delivery of the ship to Capt. Manley H. Simons, its commander, by Rear Admiral G. W. Laws.