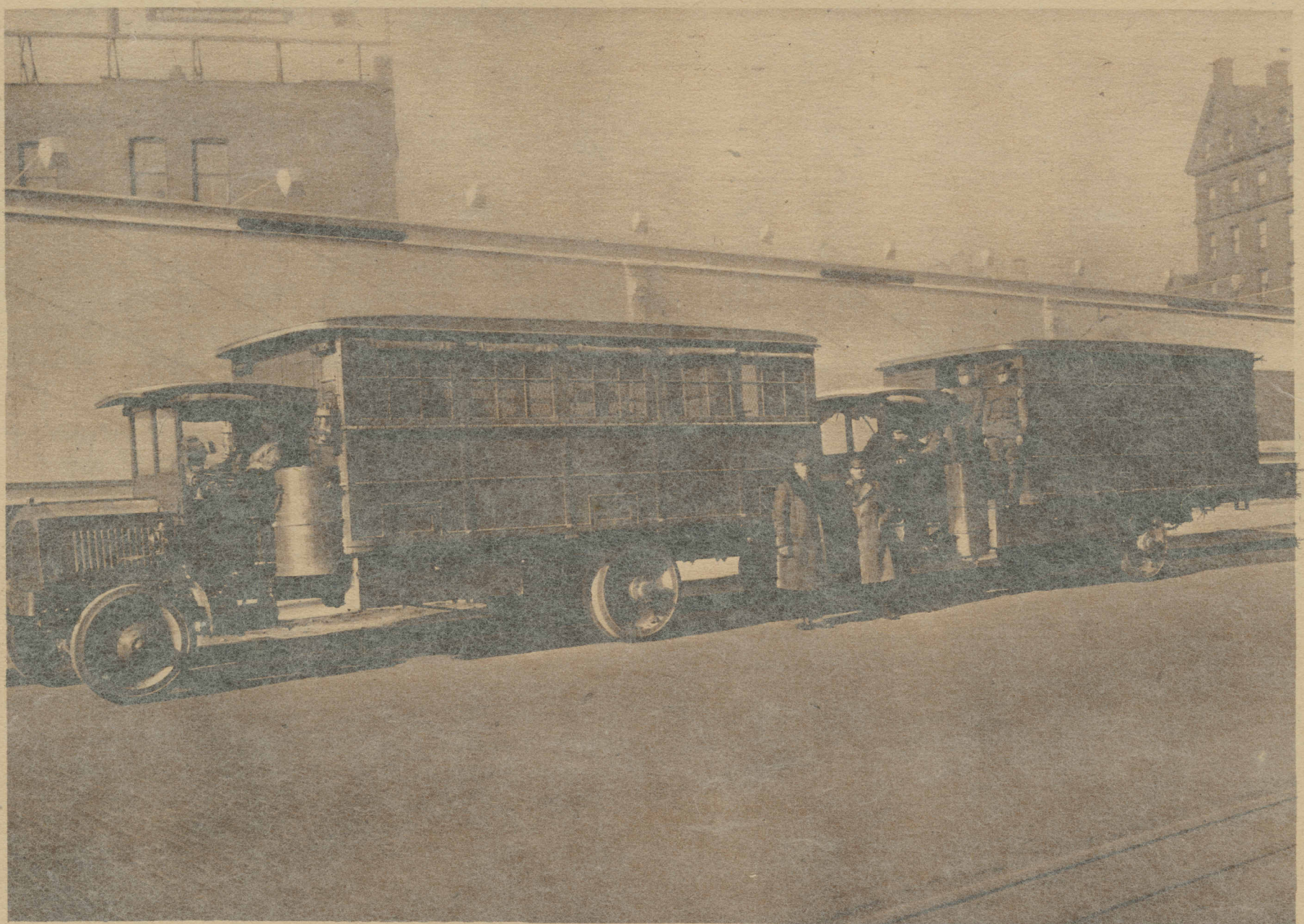


CUTTING ICE BY ELECTRICITY—A new and highly efficient type of sawing machine at its work of providing 60,000 tons of ice for the houses of a Boston ice concern at Wellesley, Mass. The ice reaches the machine in twenty-foot squares and four circular saws cut it into cakes of the regulation size.

(Photograph copyright by Underwood & Underwood.)



UNCLE SAM'S NEW COBBLER SHOP ON WHEELS—These two army trucks have been fitted up to transport a shoe repairing outfit which, with its crew of seven men working day and night, can tap 800 pairs of shoes a day. The truck at the left contains the machinery, while the other is used as a supply truck and has sleeping quarters for the men.

(Photograph copyright by Underwood & Underwood.)