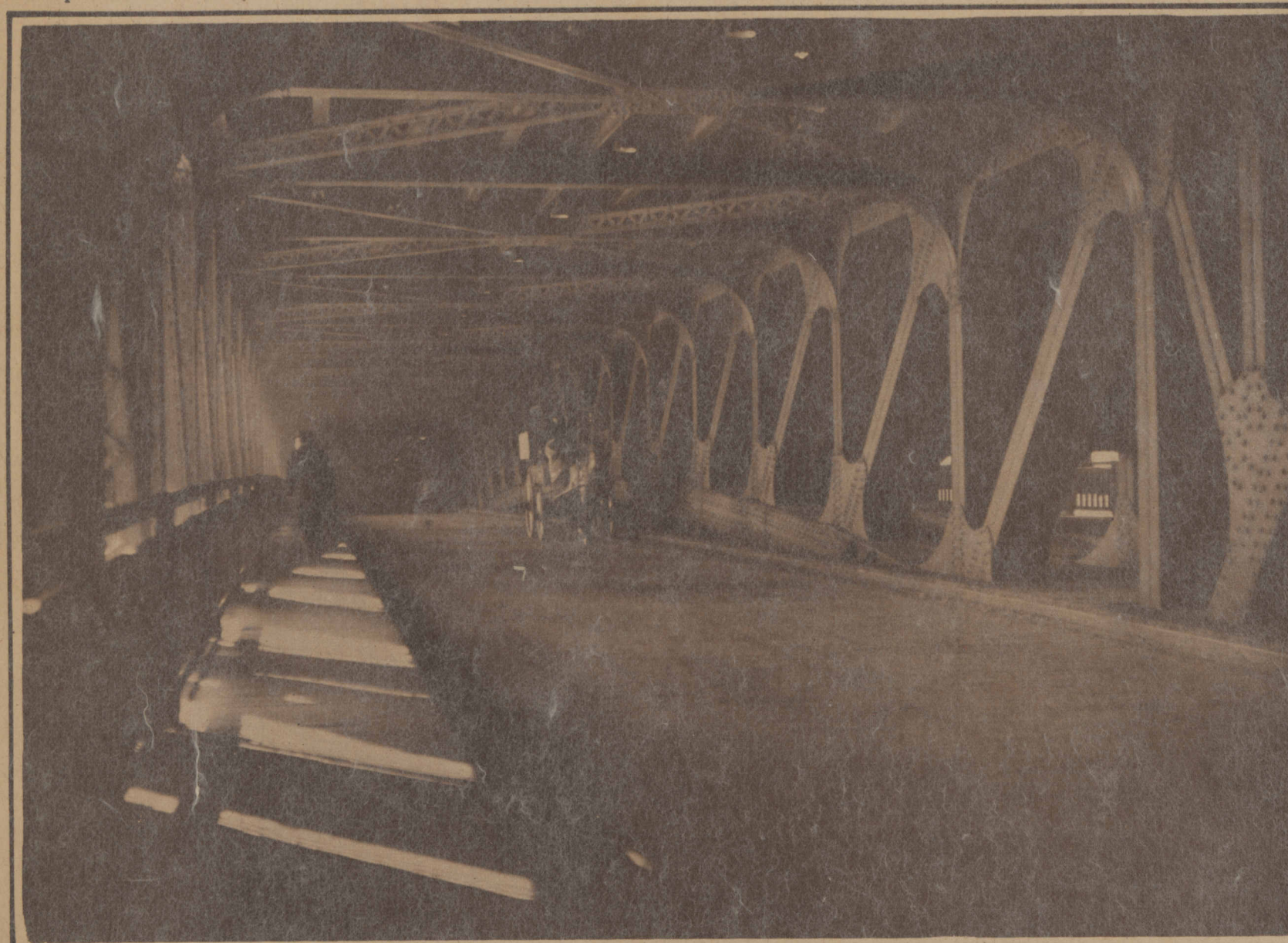


BENEATH CHICAGO ON WACKER DRIVE are wonders with which many Chicagoans are yet unacquainted. A few of them are reproduced here. Pictured above is the lower level of this great two-story esplanade, looking west from near State street. Daylight pouring into this covered street between the great columns limns the huge pillars and the massive roofing in a weird, fantastic light. Where these broad avenues now stretch once stood Chicago's old produce market, that teeming center of a vast trade which moved away to make way for progress.



LOOKING EAST AT STATE STREET, Wacker drive's lower level presents this appearance. Caissons driven to hardpan are the foundation for this colossus of concrete. A thousand carloads of timber were required for the forms that molded the forests of columns supporting the upper drive; and yet there is order and space and light on the ground level despite these intricacies.



DOWNSTAIRS ON THE LINK BRIDGE at Michigan avenue, which connects with both levels of the drive. One of Chicago's many traffic problems thus is solved by the esplanade, with its two surfaces and the ramps that open up to the motor tangles of the loop. In addition, the millions that were spent on this great undertaking bought a thing priceless—the transformation of the river front upon one bank from a hideous jumble into a vista of beauty. (All Tribune photographs)



JACK FROST COATS GRAY NIAGARA with his gorgeous brush, and every rush of its vaporous breath makes its winter wildness grander. Visible here are the ice bridge at the foot of the American falls and the crannied masses of the ice sheath, which paints its pictures on every form of shrub and steel and rock. (Photograph from Pacific and Atlantic)



MONSIEUR AND MADAME SACHA GUITRY are visible upon the New York stage in the enterprise called "Mozart." Madame Guitry, the feminine half of this famous French theatrical and matrimonial team, is otherwise Yvonne Printemps. (Photograph from Pacific and Atlantic)