

First Air Express Load from U. S. to South America



(Acme photo.)

THE first consignment of air express for the West Indies, Mexico, and Central and South America to be shipped under terms of the new airway bill is shown in this picture at the Newark, N. J., airport. The merchandise, shipped from all parts of the United States, was flown to Miami and there transferred to planes of the Pan-American Airways,

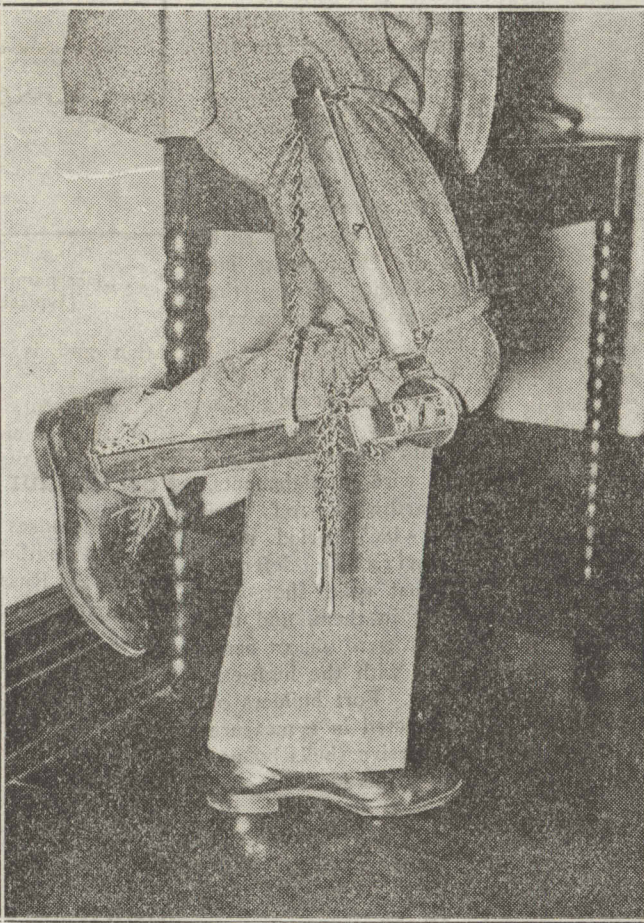
which took the packages to their ultimate destinations. The merchandise consisted of foods, machines, medicines, dry goods, and sundry articles of commerce. Officials of the air lines believe quick transportation of merchandise will increase the export trade of the United States to Central and South America.

To Prevent the Escape of Dangerous Criminals



(Acme photos.)

DESIGNED to prevent the escape of dangerous criminals, this new leg shackle was demonstrated recently before Attorney General Homer Cummings and other department of justice officials in Washington. This new type of leg iron, invented by Fred C. and Milton K. Nagle of Shreveport, La., permits a prisoner to walk slowly with comparative freedom of movement. If he attempts to run, however, the iron auto-



matically locks at an angle of twenty degrees, thus "crippling" the wearer. The shackle is made of reinforced steel. It is fastened to the leg and thigh with four automatic locking chains. A joint in the bar at the knee permits the leg to be bent only enough for walking. If the shackle locks automatically, only a special key working in what the inventors call a "pickproof" lock can straighten the iron.

Common Clay Yields Gold Lunch, But No Time Out



(Acme photo.)

CLAY recently excavated in the vicinity of Philadelphia city hall was found to contain gold. This picture shows Miss Virginia Campbell of the Academy of Natural Science with some of the clay, which she is forcing through a solution of mercury that catches the gold. About 3 cents' worth of the metal was found in every cubic foot of clay.



(Acme photo.)

DURING quiet periods at the recent international six-day bicycle races in London the riders slowed down enough to enjoy a meal or to read their mail. This picture shows Jules Audy of Canada eating lunch and riding at the same time. Riders representing nine nations competed at the races, held at Olympia, London.

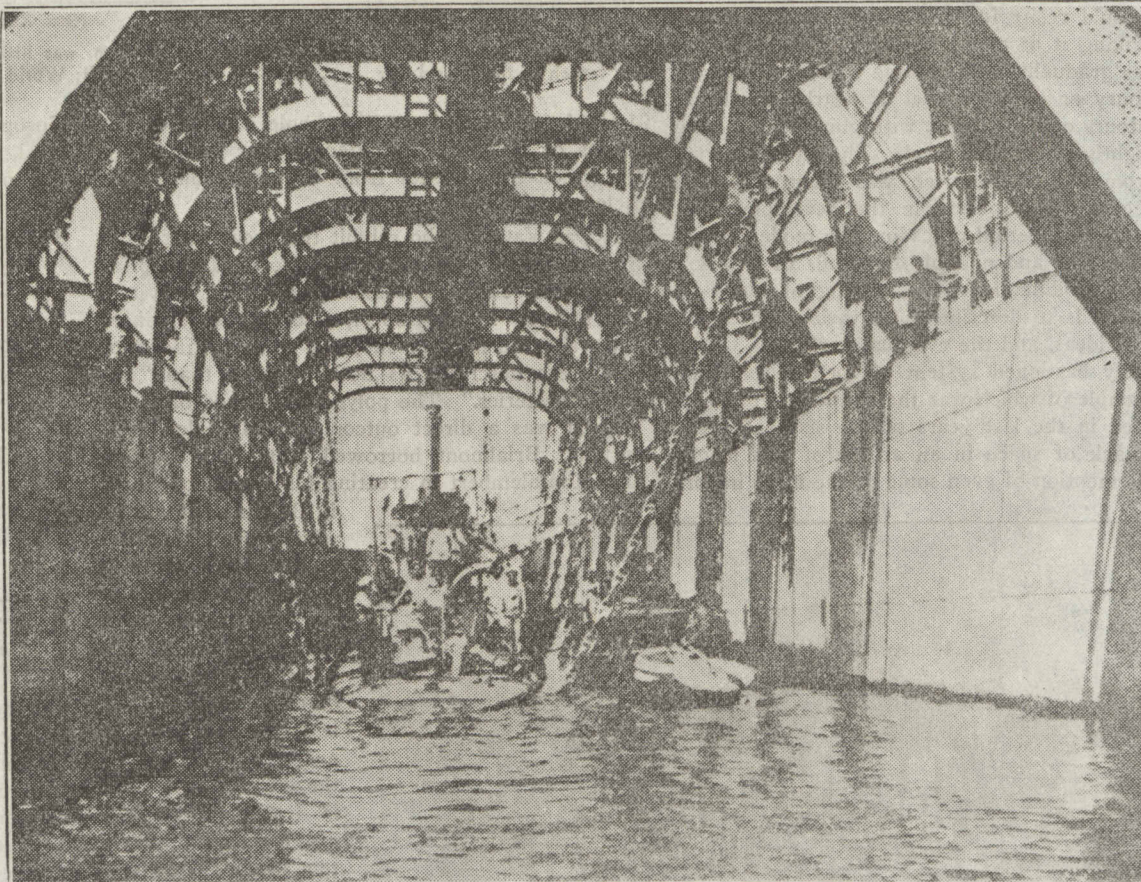
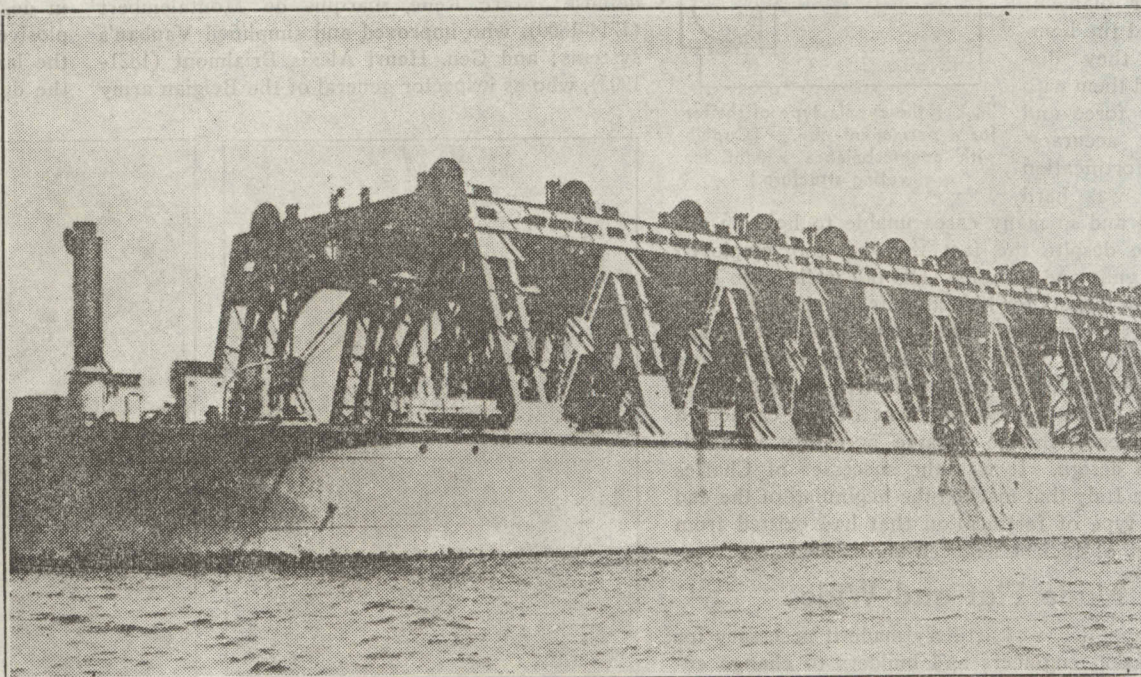
Reviving a Colonial Style



IN THE replica of Wakefield (birthplace of George Washington) at A Century of Progress Exposition, Mary Cameron greets visitors in this delectable colonial costume. The billowing organdy skirts, the quaint bodice and tiny pancake bonnet trimmed with rosebuds find a perfect background in the early

American setting. They have elicited a steady stream of admiring comment from both masculine and feminine callers. Miss Cameron adopted the style as best fitted to her duty of distributing gingerbread cookies, made in the old fashioned way from the original recipe of Mary Washington, mother of George.

French Submarine Salvage Dock



(Acme photos.)

TWO views are shown above of the newest French device for salvaging submarines. The salvage dock was tested successfully recently at the great base of the French navy at Toulon. The dock is so designed that it may submerge to a position close to a sunken submarine and then by a series of operations drag the foundered submarine into its hold. The dock is then raised to the surface and towed to port. The

top picture shows a broadside view of the dock, while the lower photo is of the interior, showing a submarine in the hold. Most of the navies of the world have spent much time and money in recent years in developing devices to lessen the dangers of submarine operation and to increase the facilities of salvaging foundered underwater craft, and the methods of rescue and salvage are highly varied.