



THREE PICTURES taken by U. S. naval photographers in the territory of Hawaii. Above at left is a view of the leper colony at Kaulaupapa, Molokai; at right, a Kauai cliff on the Napali coast.



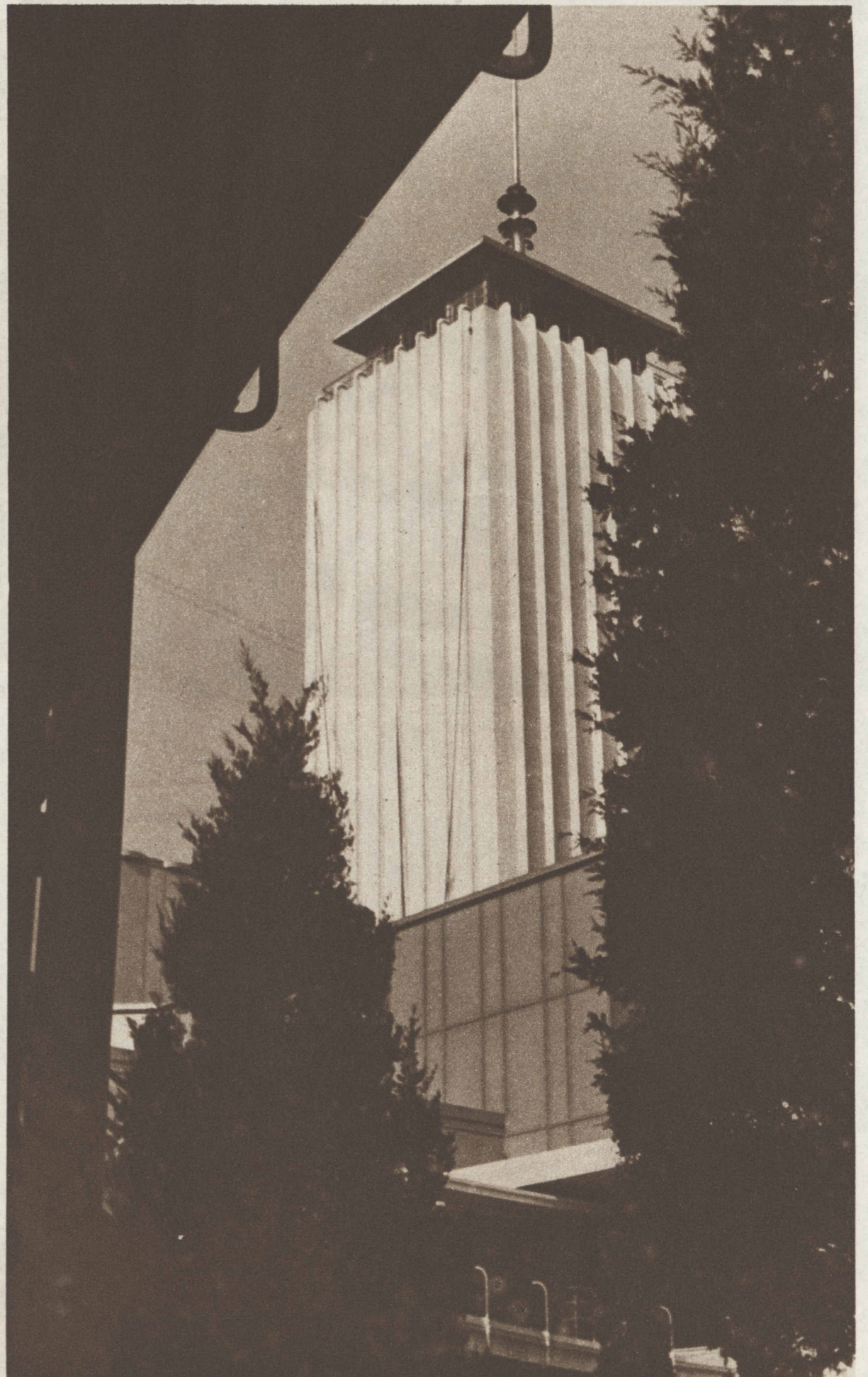
A NAVAL PLANE near one of Molokai's innumerable waterfalls.

(Photos reproduced through the courtesy of "Proceedings," published by the U. S. Naval institute at Annapolis, Md.)



LIEUT. GEN. SADAO ARAKI, Japanese minister of war, bows before the altar containing the ashes of 104 soldiers of the Nipponese empire who fell in the Chinese campaign.

(Associated Press photo.)



FOR THIS SNAPSHOT glimpse of the Hall of Science at A Century of Progress \$3 was paid to Oleta Thal of Chicago. The Tribune will pay this sum for each amateur snapshot of scenes and events at the World's Fair reproduced in this section. Address Roto Editor. No entries can be returned.