



MRS. GIFFORD PINCHOT II

MRS. ADRIAN ISBELIN II

MRS. ALLAN A. RYAN, JR.

THE MARCHIONESS OF QUEENSBERRY

MRS. ANTHONY J. DREXEL, JR.

MISS VIRGINIA CARTER RANDOLPH



THE COUNTESS HOWE



LADY ASHLEY



THE COUNTESS OF GALLOWAY



MRS. BIDDLE STEWART



MRS. ALISTER MCCORMICK



MRS. FRANKLIN MOTT GUNTHER



THE VISCOUNTESS WEYMOUTH



MRS. CORNELIUS VANDERBILT, JR.



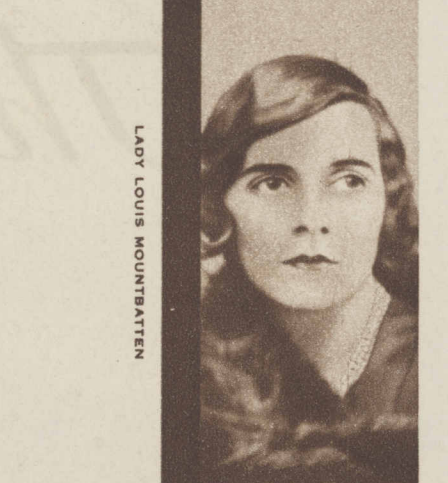
LA DUQUESA DE ALBA



MRS. JOHN DAVIS LODGE



LADY BUCHANAN-JARVIS



LADY LOUIS MOUNTBATTEN



MISS HELEN CHOATE



LADY VIOLET ASTOR



LA MARQUISE DE POLIGNAC

The Loveliest Women in the World... follow Pond's 4 steps to Beauty



TRAVEL round the world and you will find this to be true: The loveliest women follow Pond's 4 steps to beauty... It is the four delightful preparations that keep their skin always flower-like, radiant... Charming young Mrs. Cornelius Vanderbilt, Jr. declares, "I'm devoted to the marvelous Two Creams and the exquisite Tissues and invigorating Tonic"... Pretty Mrs. Gifford Pinchot II says, "Just the four steps of Pond's Method, faithfully followed every day and never omitted, will keep one's skin smooth, fresh and clear"... Your own experience will prove this... Swift, simple, scientific, Pond's Method assures the pore-deep cleansing, the gentle bracing and toning, the exquisite protection from wind and weather that are essential to preserve the youth and beauty of your skin.

POND'S METHOD: 1. For pore-deep cleansing, amply apply Pond's Cold Cream several times a day, always after exposure; pat in with upward, outward strokes. 2. Wipe away with Pond's Cleansing Tissues, soft, safe, super-absorbent—they come in the new Parisian peach color as well as white. 3. Pat cleansed skin briskly with Pond's Skin Freshener to banish oiliness, tighten, tone and firm. 4. Smooth on a dainty film of Pond's Vanishing Cream for powder base, protection, exquisite finish.

SEND 10¢ FOR POND'S 4 PRODUCTS

POND'S EXTRACT COMPANY, Dept. V 143 Hudson Street . . . New York City

Name \_\_\_\_\_

Street \_\_\_\_\_

City \_\_\_\_\_ State \_\_\_\_\_

Copyright, 1930, Pond's Extract Company