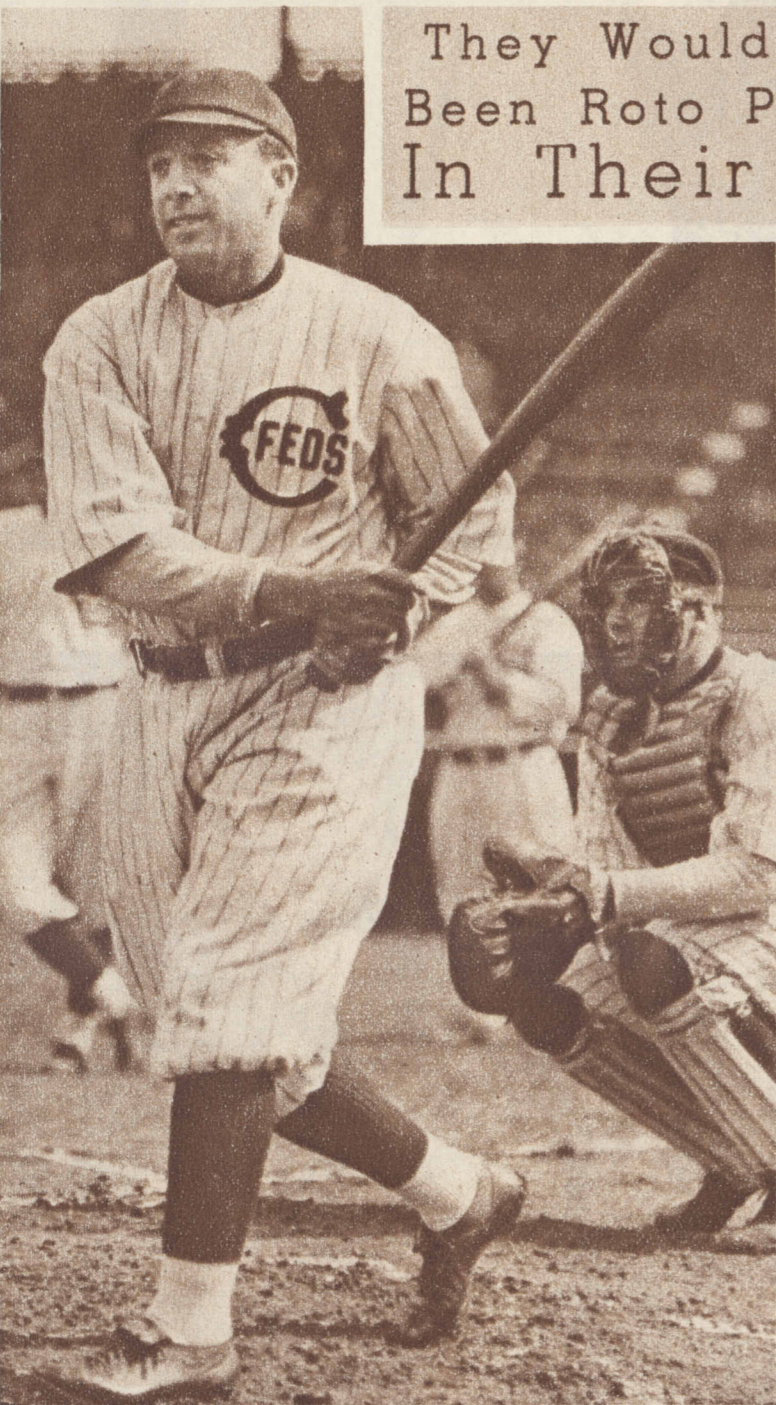


NEW IN U. S. AIR FORCES is this Northrop attack plane, photographed above Langley field, Virginia. Speed, over 200 miles per hour.

FOR THE TRANSATLANTIC SKY LINE, scheduled for inauguration tomorrow with the first flight from Ireland to Newfoundland, this plane was built to specifications of the British air ministry. Named the Albatross, it is powered with four twelve cylinder, super-charged motors, has a speed of 200 miles per hour, a range of more than 3,000 miles.

They Would Have
Been Roto Pictures
In Their Day



SPARK PLUG of baseball's most famous double play combination, Tinker to Evers to Chance, was Joe Tinker. The famous shortstop played his first season with the Cubs in 1902. In 1913 he went to the Cincinnati Reds as manager; the following year, became manager of the Chicago Feds.



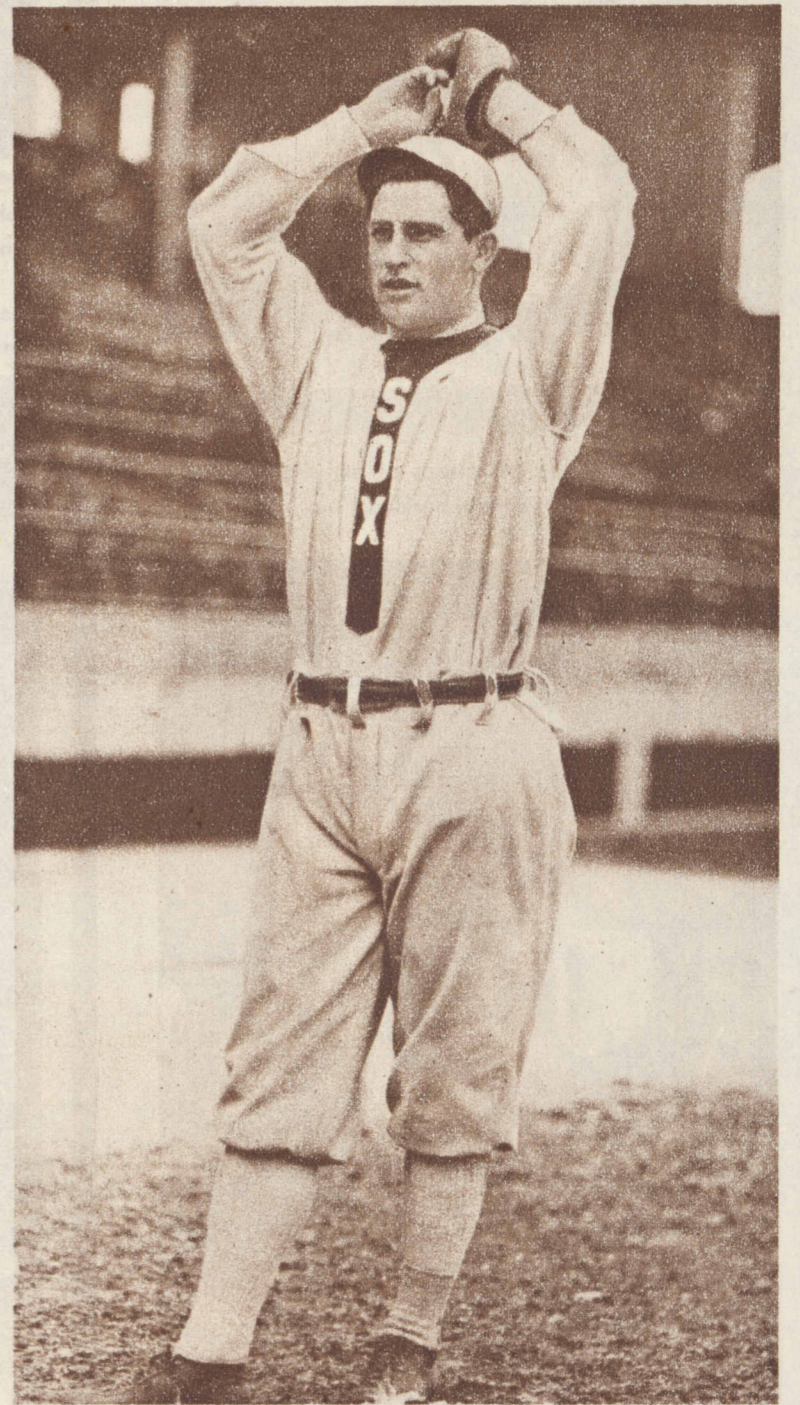
THE PEERLESS LEADER, Frank L. Chance (batting), was at the end of the Tinker-Evers-Chance receiving line on first base. As manager, he led the Cubs to four National league pennants and two world's championships. Great infielder, he also was a great batsman.



TAKING THE BALL FROM TINKER on second base was Johnny Evers, who joined the Cubs the same year as that celebrated teammate. Throughout 1907 and 1908, Evers and Tinker never spoke except when necessary on the field.



DR. G. HARRIS WHITE ("Doc" to baseball fans) was a colorful White Sox pitcher from 1902 to 1913. He was a D.D.S.; played the piano; wrote songs in collaboration with Ring Lardner.



EDWARD A. ("BIG ED") WALSH, king of spit-ballers, was the "greatest pitcher of them all," according to the late Charles A. Comiskey. In 1908, his big year, he was in sixty-six games; won forty, lost fifteen; pitched 464 innings, yielded only 343 hits, struck out 269. His iron man record never has been equaled since.