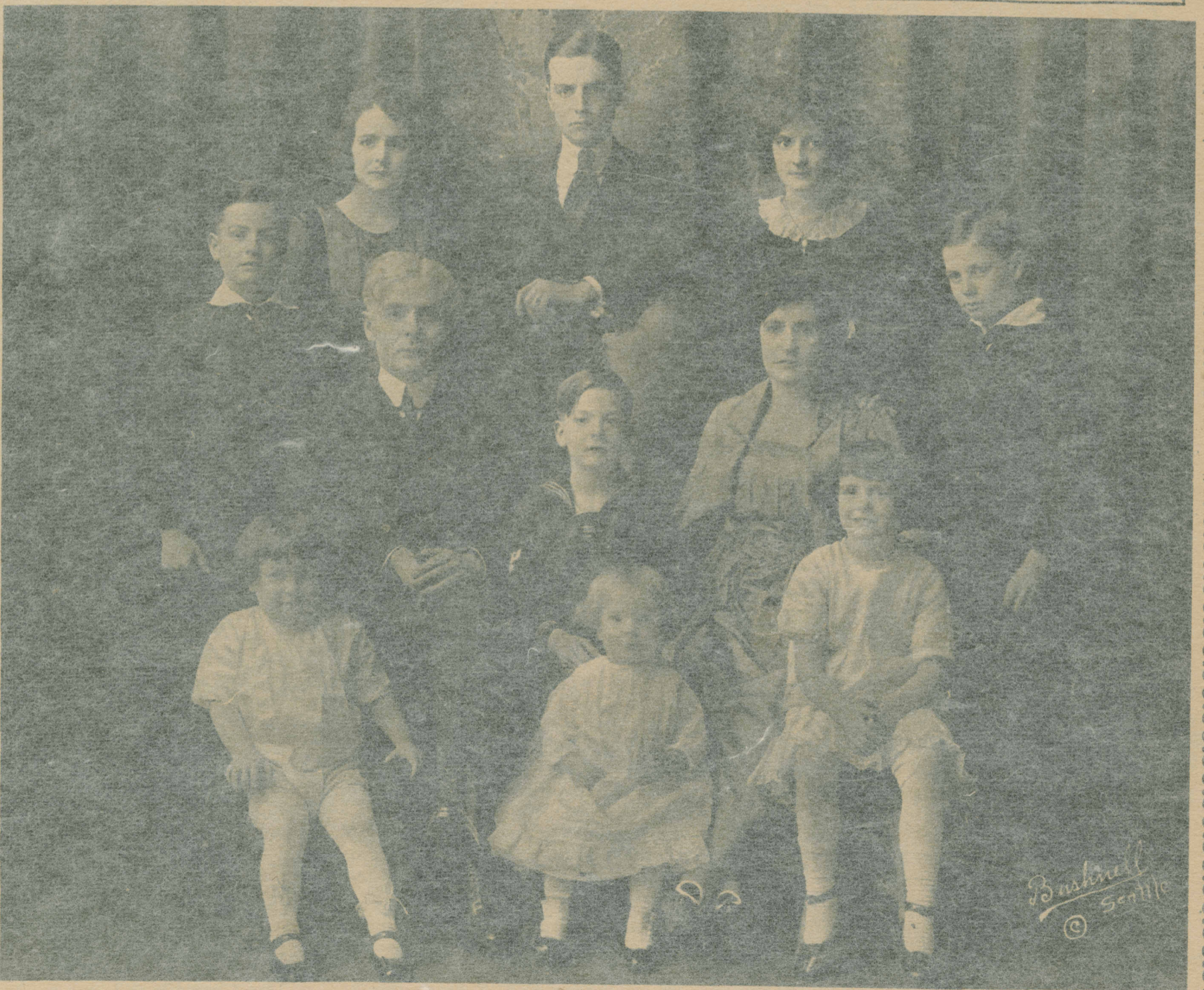


IN THE LIMELIGHT



NEW UNITED STATES AMBASSADOR TO FRANCE AND HIS WIFE AND SON—Hugh C. Wallace of Tacoma, a friend and adviser of President Wilson, has been appointed to succeed William G. Sharp, resigned, as ambassador of the United States to France. Shortly after our entry into the war Mr. Wallace went to London on a personal mission for the President. Mrs. Wallace was the daughter of the late Chief Justice Melville E. Fuller of the United States Supreme court. Their son, Capt. Melville Wallace, is with the A. E. F.

(Photograph copyright by Clinedinst.)



Bushnell
© Seattle

MAYOR OF SEATTLE AND HIS FAMILY—Mayor Ole Hanson of Seattle, Wash., has suddenly sprung into the limelight by ending the great strike in his city when there was a general walk-out. He took a firm stand against the bolshevist agitators and succeeded thus in preventing the spread of what threatened to end in an industrial calamity. Mayor Hanson was born in Racine county, Wis., on Jan. 6, 1874. When he was 17 he was hurt in a railroad wreck and partially paralyzed. He has been a member of the Washington legislature, and was a progressive candidate for the senate in 1914. He passed an anti-race track gambling law, an eight hour law for women and an eight hour law for miners in his state. He has nine children, is considered the best orator in the northwest, and is a good business man.

(Photograph copyright by Bushnell, Seattle.)