



② **TRIBUNE LUMBERJACKS.** French-Canadians all, four of the thousands of lumberjacks who start your morning Tribune on its way from the timberlands to your doorstep.

*On the Radio . . . Tonight!*

**QUIN RYAN** will amplify the story contained in these photographs, describing the life of a lumberjack, the thrill of a ride behind the dogs, and gripping story of this struggle with Nature for pulpwood.

Tonight at 9:45 o'clock!

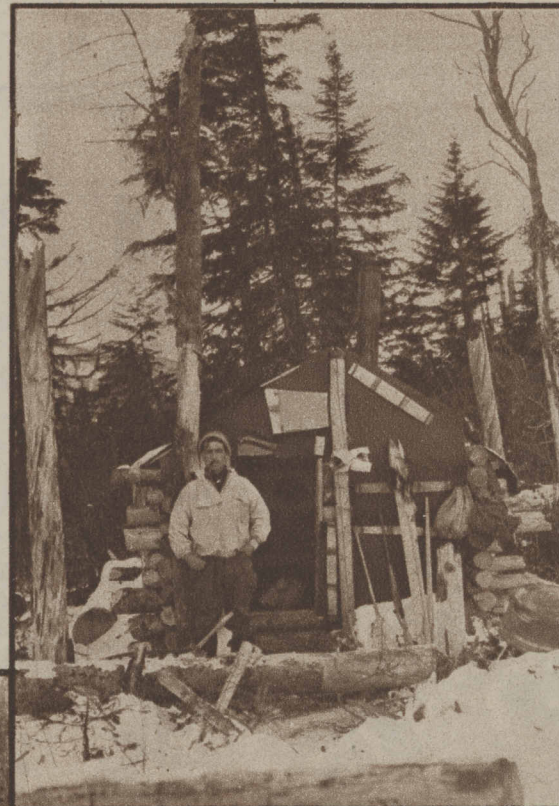
From trees to Tribunes! Follow the story of the Tribune on its way from northern forests to your breakfast table in these pages of pictures every Sunday!



③ **NORTHLAND LOCOMOTIVES.** A timberland "musher" with two of his speedsters. At the left is Brandy, a shaft dog, and to the right, Brownie, a lead-dog.



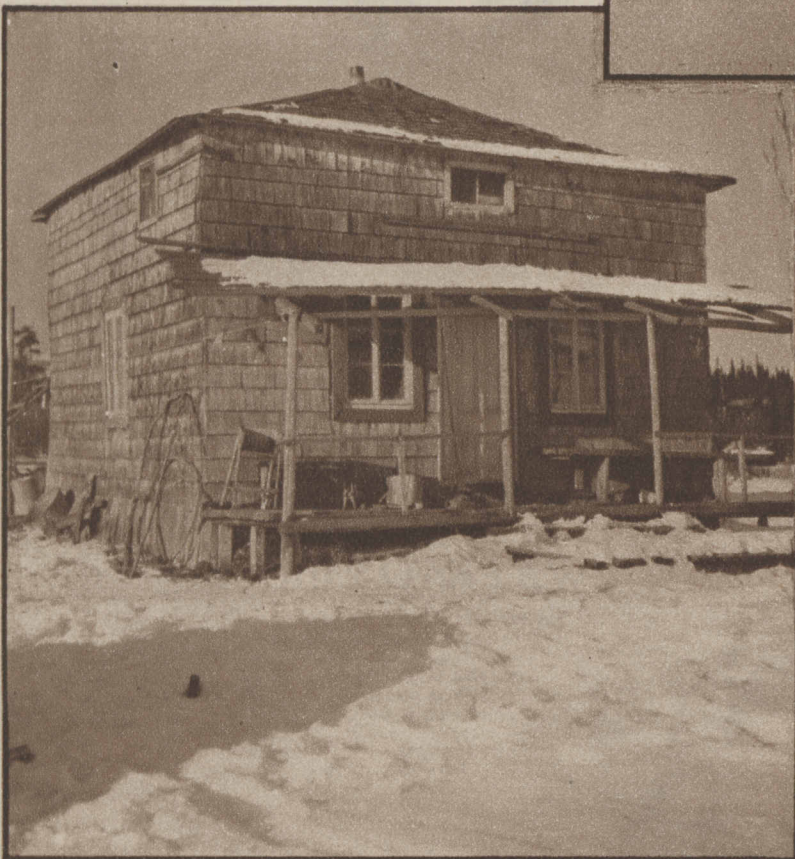
④ **WALKING COSTUME.** Here are two Tribune woodsmen ready for a cruise through the timberlands. They are wearing "cossacks," made of canvas, which break the icy blasts that blow down from the north.



⑤ **A NORTH SHORE TRAPPER.** Though the timber operations have driven most of the wild game farther north, trappers still find a pelt or two in the land where the axes ring. Here's the cozy retreat of a trapper on Thirty Mile Lake, with the host at home.

## "TREES TO TRIBUNES"

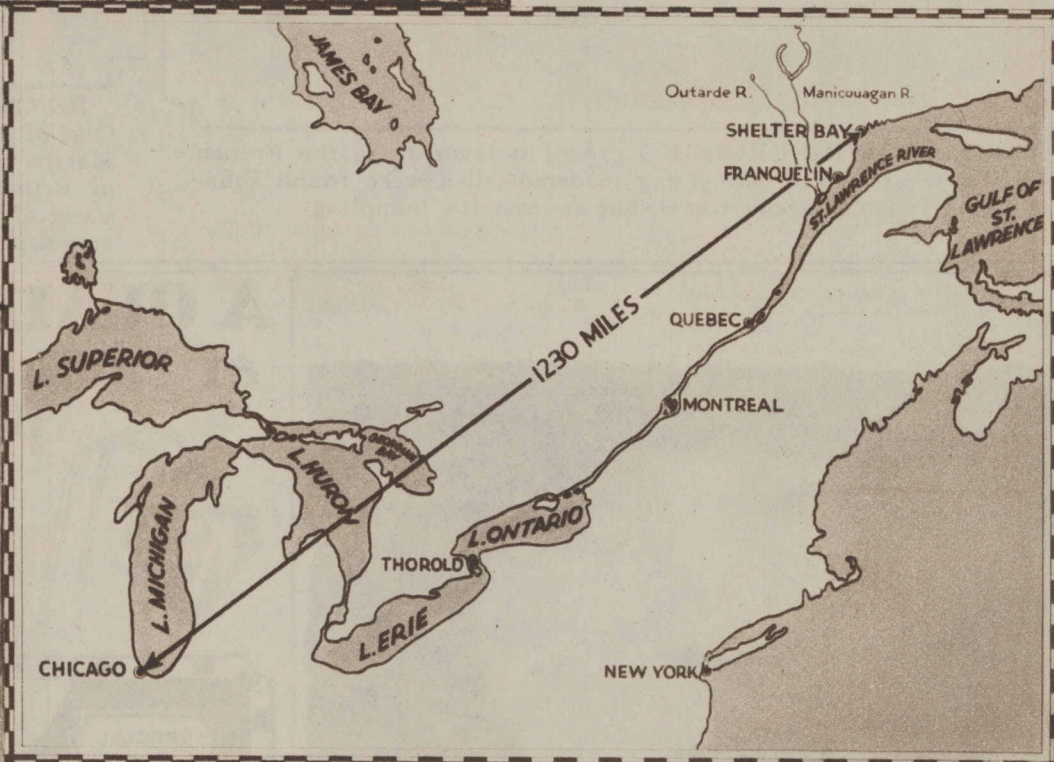
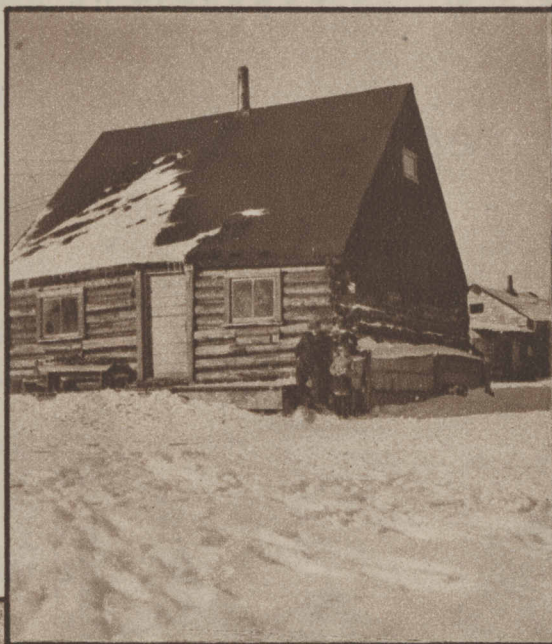
### *The Romance of Newspaper-Making!*



⑧ **THE HOME OF TIBASSE.** Where Shelter Bay's Indian patriarch makes his headquarters. Here is where Tribune men first set foot at Shelter Bay.

① **A TIMBER HIGHWAY.** The Franquelin river, flanked by timber-studded slopes, on its way to the St. Lawrence. At its mouth stands the village of Franquelin, base of supplies for timber operations along the river. Logs floated down the Franquelin are loaded on the pulpwood boats at this Tribune village.

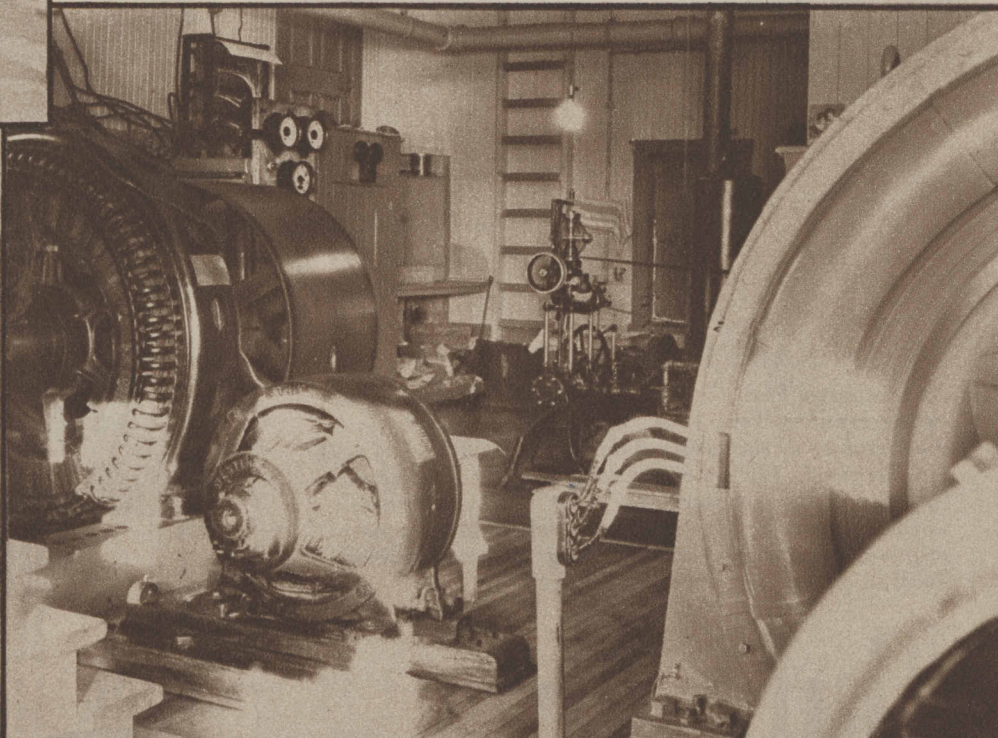
⑦ **CHANGING TIMES.** It's a far cry from the log-cabin at the right to the modern intricacies pictured in the Shelter Bay power house (lower right), but the change has taken place in eight years. The old cabin was one of the first buildings erected in Shelter Bay. Modern dwellings, steam heated and electrically lighted, have replaced the cabins.



⑨ **A CABANAGE.** Tibasse's relatives are numerous, and when Mrs. Tibasse hangs out the S. R. O. sign, this cabanage, or tepee, takes care of the overflow. Walled with canvas, and floored with balsam boughs, it provides a snug retreat.



⑩ **CURING A BEEF-HIDE.** Fur and shreds of skin have been carefully scraped off, and the hide will dry and toughen until next winter when it will make moccasins for the Tibasse brood.



⑪ **POWER.** Here is where the swift waters of the Rocky river are harnessed for the power that supplies Shelter Bay with light and power, operates the telephone lines, saws the wood in the slasher mill, and performs the other modern duties of electricity.

SEE YOU NEXT SUNDAY!