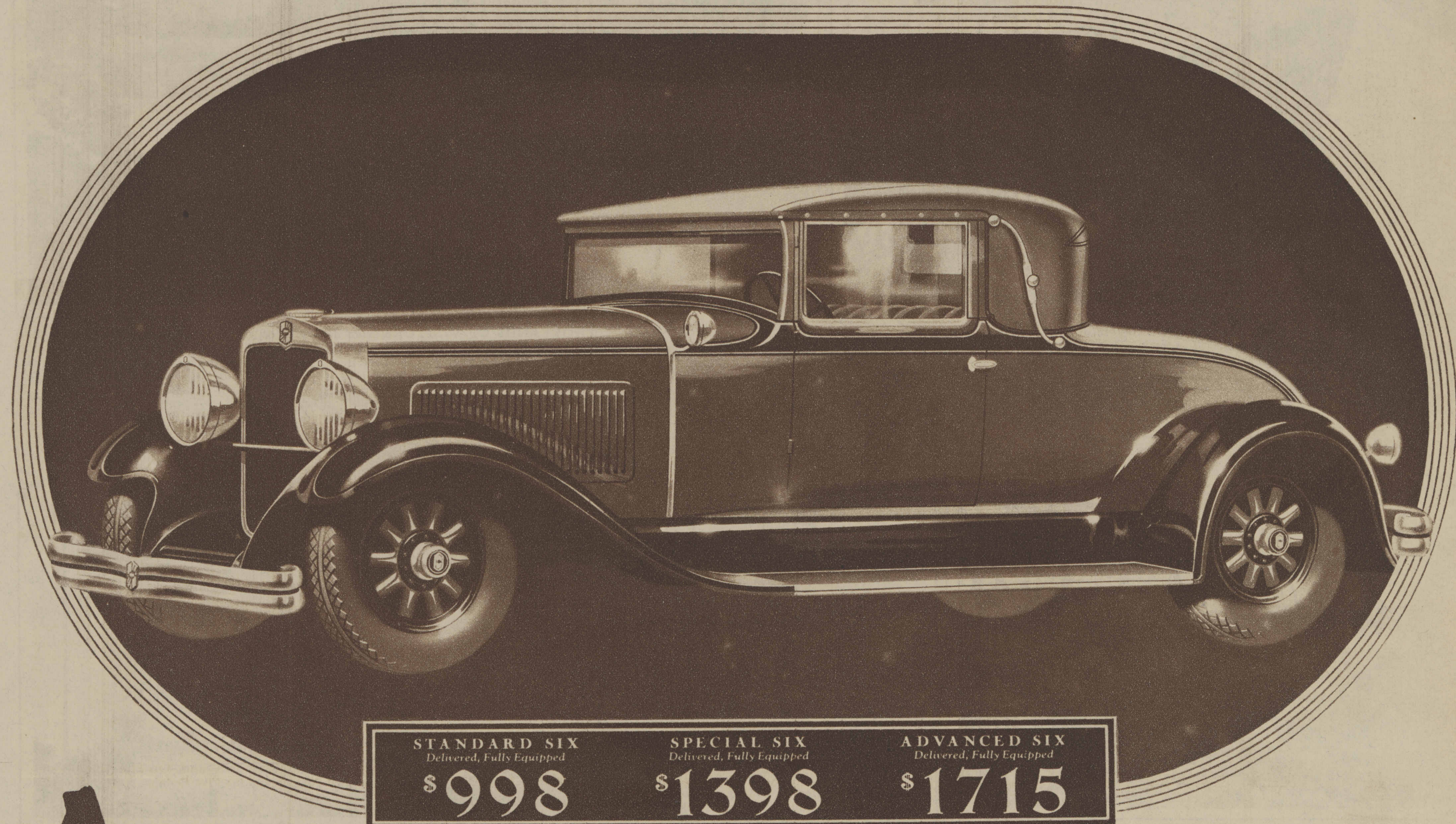


NASH '400'

LEADS THE WORLD IN MOTOR CAR VALUE

STANDARD SIX
Delivered, Fully Equipped

\$998

SPECIAL SIX
Delivered, Fully Equipped

\$1398

ADVANCED SIX
Delivered, Fully Equipped

\$1715

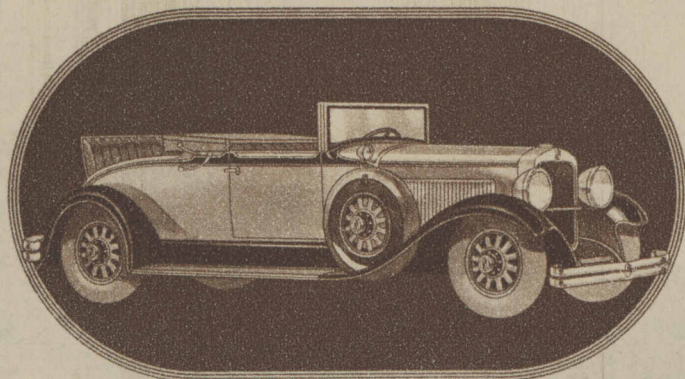
All the Smartness of the Open Car ... All the Comfort of the Closed

FOR people who wish they could own two cars—one open and the other enclosed—Nash has a suggestion—an answer to the wish—the new “400” Cabriolet convertible.

This is the car for every motoring mood and weather—an open car when blue skies urge you forth—a closed car at the first drop of rain—tight and comfortable when winter comes.

You have your choice of three of these charming Cabriolets, at three exceptionally attractive prices, in the new “400” Series of Nash motor cars.

There is the Standard Six Cabriolet, easily the most desirable car of its type in the \$900 field. It is powered by a new Nash high-compression, high-turbulence motor with a 7 bearing crankshaft, torsional vibration damper and Bohnalite aluminum alloy (invar-strut) pistons.



The Advanced Six “400” Cabriolet is illustrated above—all three have a big, roomy, rumble seat.

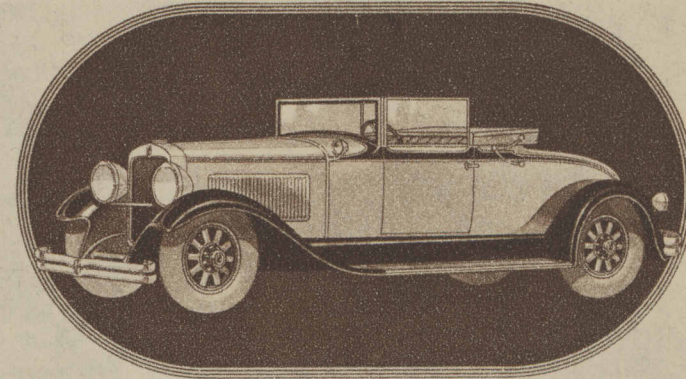
Lovejoy hydraulic shock absorbers, *outboard mounted*, and Chromium nickeled bumpers, front and rear, are regular equipment, *at no extra cost*.

The Special and Advanced Six Cabriolets have the new Twin Ignition motor, Bijur Centralized Chassis Lubrication and every other fine-car feature which the “400” Series has introduced to moderate-priced motoring.

All three have a big, roomy rumble seat for occasional guests. All have the ease of control which identifies the Nash “400” as the world’s easiest driven motor car. All have the smart, spirited appearance and performance which have centered public attention and public approval on the “400” ever since its introduction.

And all are equipped, at the low delivered prices quoted above, with every fine car accessory—bumpers, shock absorbers, spare tire, tire lock and tire cover—*nothing more to buy!*

Even with the top down, the smart nickel framed windows may be raised for wind protection.



CHICAGO NASH COMPANY (Distributors)

H. T. Hollingshead, President

Sales, Service and General Offices, 2360 Prairie Avenue, Corner 24th Street

Telephone, All Departments—Calumet 2000

Michigan Avenue Display Room, 2501 Michigan Ave.

Associate Cook County Dealers

SOUTH
South Side Auto Sales, 1210 E. 63rd St.
Kullberger Motor Sales, 1441-53 E. 75th St.,
Exchange Ave. at 79th St.
Southwest Nash Sales, 7616 S. Halsted St.,
6047 S. Halsted St.
Balzekas Motor Sales, 4030 Archer Ave.
Antonsen Motor Sales, 6716-18 S. Western Ave.
Roseland Motor Car Co., 10857 Michigan Ave.

Heidinger-Hoyt Motor Sales,
239 Western Ave., Blue Island, Ill.
Harvey Nash Sales Co.,
15327 Broadway, Harvey, Ill.
Lindix Nash Motor Sales,
2015 Chicago Road, Chicago Heights, Ill.
Arthur Mahler, 3rd St. and Locust, Matteson, Ill.
WEST
Kaplan Bros. Sales, 3152 Ogden Ave.

Rowe-Young & Cooley, 4660 Washington Blvd.,
3937 Washington Blvd.
Barrow Bros., 316 Madison St., Oak Park, Ill.
Berwyn-Cicero Nash Sales,
6420-24 West 22nd St., Berwyn, Ill.
Breen Motor Company,
11 Hill Grove Ave., La Grange, Ill.
NORTH
Isaacson Motor Sales, 3020 Broadway

Illinois Motor Sales Corp., 5300 Broadway,
1928-30 Irving Park Boulevard
Emich Motors Corp.,
6501 N. Western Ave., Corner Arthur
Evanston Nash Co., 1735 Benson Ave.,
Corner Clark, Evanston, Ill.
Suburban Nash Sales, Winnetka, Ill.
Highland Park Nash Sales, Highland Park, Ill.
Highland Park Nash Sales, Lake Bluff, Ill.

NORTHWEST
LoganSquareMotorCarCo., 2470-78 Milwaukee Ave.,
1515 W. Chicago Ave., 3239 W. North Ave.
Rome Motor Sales, Inc., 4110-14 Milwaukee Ave.
Nash Park Sales, 2954-56 Lawrence Ave.
Gran Nash Motor Sales, 5140-48 W. North Ave.
Towle Nash Sales, Inc., 6713 Northwest Highway
Poyer Nash Sales, 1586 Miner St., Des Plaines, Ill.
(792)