

Club Roadster

\$1650

"Farmer" 4-cylinder, 16-valve, double overhead camshaft, 2,000 R. P. M. to H. P. motor with 2 1/2 in. bore, 5 in. stroke, aluminum casing, 1 1/2 inch Stromberg carburetor with economizer, D. U. 4 high tension Bosch magnets, Bijur 8-volt, 2-unit starting and lighting system, Willard battery, Tomken front and rear (full floating) axles and bearings, 34x4 inch Goodyear tires, demountable rims, 118 inch wheel base. All other specifications equally high grade. Price, F. O. B. Chicago, \$1650.

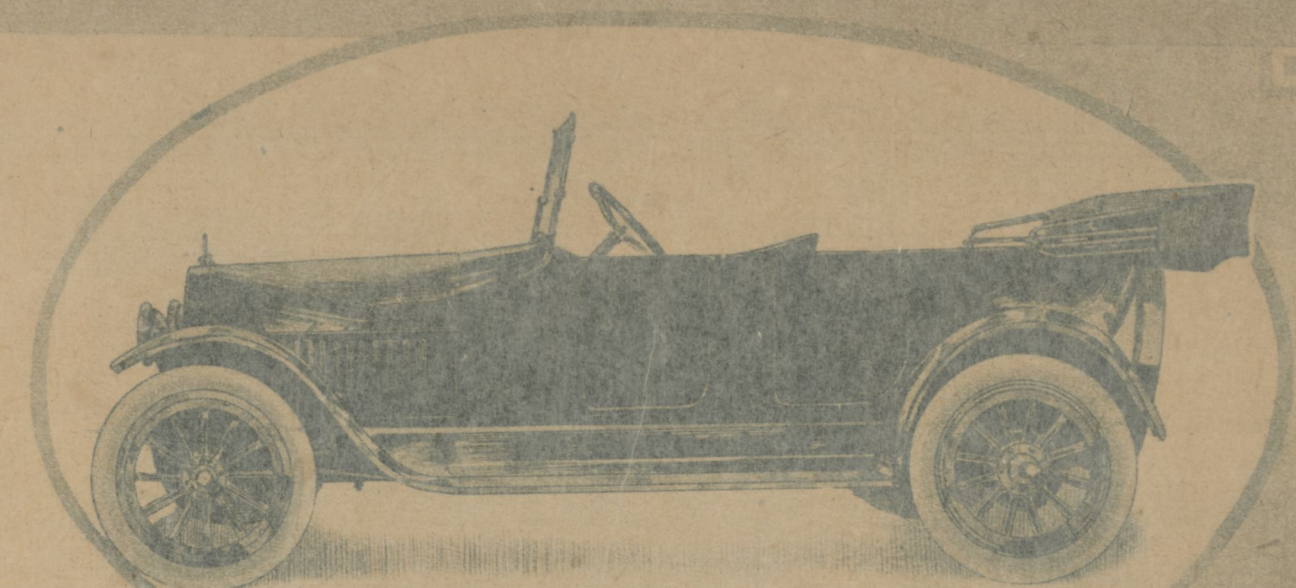
"Typically Chicagoan" DREXEL MOTOR CARS

¶ To one who, knowing the enduring qualities of Drexel Cars, gazes for the first time on the three superb 1917 models, it would appear that the finality of craftsmanship and engineering skill in Motor Car building has been achieved.

¶ Pen and brush fail in the telling of their beauty; and only your personal inspection of models 5-40, 4-60, and 7-60 can inspire deserved appreciation of their charm. Now are they exhibited, for the first time, in Chicago, in our Booth G 9, Greer Building, at the Automobile Show. You must see them. Their reception at the local exhibition can hardly be less pronounced than the wildly-enthusiastic ovation accorded them by the critics at the New York Show a fortnight since.

DREXEL MOTOR CAR CORPORATION
PLANT AND GENERAL OFFICES, 701 N. LAKE AND WALLACE STS., CHICAGO

Complete Displays at
Retail Salesroom—2241 Michigan Av.
Send for Literature
AUTOMOBILE SHOW
Space G 9, Greer Building



Five-Passenger

\$985

"Farmer" 4-cylinder, 8-valve, overhead cam, 30 H. P. motor, with aluminum casing (that saves 150 pounds in weight), Stromberg carburetor, Bosch high tension magnets, Bijur 2-unit, 6 volt starting and lighting system, Willard battery, Full floating rear axle, Semi-elliptic front and three-quarter elliptic rear springs, 112 in. wheel base, 34x4 Goodyear tires, with quick demountable rims. Roomy and luxurious body. All other specifications equally high grade. Price F. O. B. Chicago, \$985.

¶ Below the new 7-passenger DREXEL. Its great motor range and its power make it dominant in performance among cars of its class. Its beautiful appearance best speaks for itself. It is the roomiest car ever built. Model 7-60.

¶ Constructed on the same chassis as the DREXEL Club Roadster (abbreviations given in extreme left hand column) and sells for the same price, \$1650 F. O. B. Chicago.

