



# the State News

Special Supplement to the State News Friday October 20, 1978

## SPECIAL STATE NEWS SPORTS SECTION

# MSU v. Indiana

By **JOE CENTERS**  
State News Sports Writer  
The MSU football team, which bounced back into the Big Ten race with its 24-15 win over Michigan last week, will host Indiana Saturday in a 1:30 p.m. coming contest at Spartan Stadium.

Before Spartan coach Darryl Rogers even had a chance to savor his first big win in his three years at MSU, the name Indiana, and the word letdown, popped into his head. And it was Indiana, who kept

the Spartans from a share of the Big Ten title last year. The Hoosiers and Spartans battled to a 13-13 tie in the sixth game of the season, and that tie left MSU one-half game behind co-champions Michigan and Ohio State in the final stand-

ings. Rogers said that his team was badly beaten in that game and they were lucky to get out with a tie. "They tore us every way but loose," Rogers said. "I think it was that game that turned around our season."

After that game, the Spartans went on to win their last five games for their third-place Big Ten finish.

This year the Hoosiers, like MSU, are 2-3, 1-1 in the Big Ten. They have one big win so far this season, a 14-7 victory over Washington, last year's Rose Bowl winners. They also got clobbered 69-17 by Nebraska the following week.

Indiana has shared its quarterback duties between Scott Arnett and Tim Clifford. Arnett has completed 20 out of 55 passes for 238 yards and one touchdown while Clifford is 15 of 40 for 180 yards and one touchdown.

The two work-horses for the Hoosiers are running backs Mike Harkrader, who has gain-

ed 283 yards in 71 carries, and Darrick Burnett who has rushed 79 times for 276 yards.

Indiana kicker David Freud has been perfect in 15 kicks so far this season (12 for 12 on extra points and three for three on field goals).

The Hoosier defense is led by Joe Norman, 6-foot-1, 211-pound linebacker, who has made 74 tackles, more than double the number of stops made by any of his teammates.

The Spartans, as usual, will be led by quarterback Eddie Smith and his aerial show. Smith, who completed 20 of 36 passes for 248 yards against Michigan, was named college football's offensive player of the week for his performance by Sports Illustrated. He was also named AP's Big Ten player of the week.

Smith, who leads the Big Ten in passing, is likely to throw the ball to anyone. Against Michigan, he completed passes to seven different Spartans.

(continued on page 5)

**MIKE KLOCKE**

## Finally a title race



Can you imagine if the Nov. 25 clash between Michigan and Ohio State was anti-climatic? Maybe a game for third-place?

Perhaps that's going a little too far. But here we are getting into the thick of the conference schedule, and there's still a Big Ten race. In fact, it isn't even the "Big Two" that are leading the race... Purdue and Wisconsin are on top.

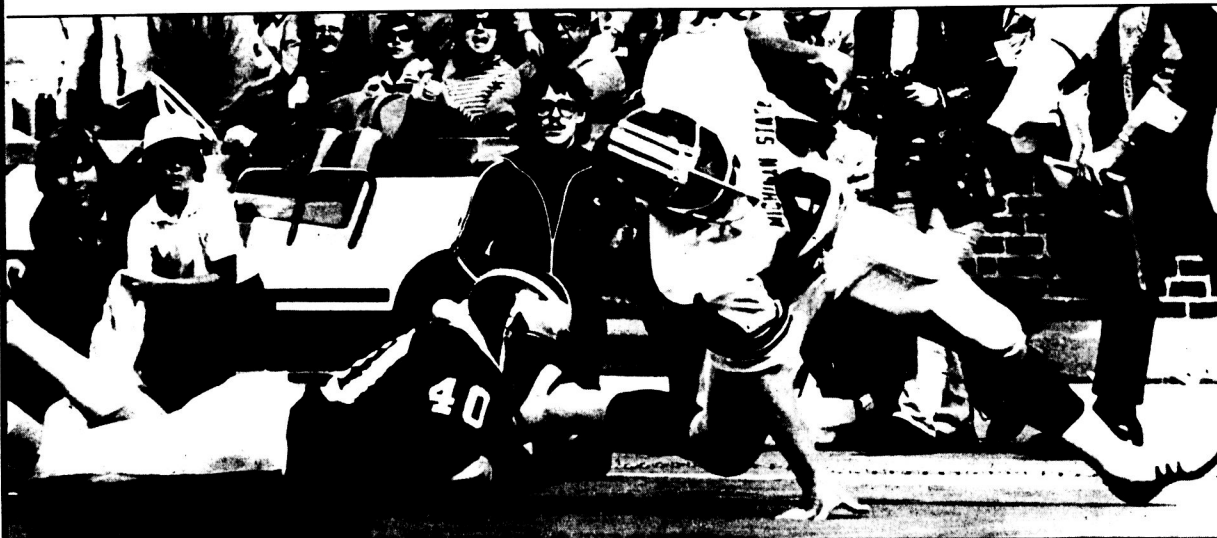
Michigan still has to be considered the odds-on favorite to win the title, especially with the lethargic play of Ohio State this year. But there's

going to be a race. And it's not going to be a two-team race. And, hey, that's good for conference football.

You may think it's just a matter of time before Michigan and Ohio State pull away from the pack in this race. But a quick glance at the schedules show that Purdue and MSU have very good chances to either win or share the title. A tie for the title is a very real possibility at this juncture.

Purdue is now 2-0 in the conference — upset

(continued on page 2)



MSU tight end Mark Brammer (91), who leads the Big Ten in receiving with 19 catches, struggles for extra yardage against Michigan defender Ron Simpkins in Saturday's MSU win. Right

behind Brammer in the league leaders are Kirk Gibson and Eugene Byrd with 18 receptions each.

State News/Ira Strickstein

# 'Other' teams catching up with the pass



State News/Robert Kozlott

MSU defensive back Tom Graves (10) breaks up a pass in last year's 13-13 tie with Indiana in Bloomington. The tie kept MSU from a share of the Big Ten title. Actually, though, MSU head coach Darryl Rogers felt MSU was "lucky" to get away with a tie, since Indiana gained almost 500 yards and outplayed the Spartans. Still, Rogers was criticized for not going for a two-point conversion when MSU scored with about two minutes left in the game.

(continued from page 1)  
victories over MSU and Ohio State. In the next four weeks, Jim Young's Boilermakers play Illinois, Iowa, Northwestern and Wisconsin. Then comes Michigan and Indiana . . . Purdue will most likely be favored to win all but the Michigan game.

MSU, meanwhile, has beaten Michigan and doesn't play Ohio State. The Spartans have to be considered favorites in the remainders of their games.

So what does it all mean? Does this mean there really is more equity in the Big Ten gridiron scene? Most of the coaches predicted more balance before the season began. As usual, most people, myself included, didn't believe them.

**And if you look at the teams that are making a run at the perennial powers, there's one common denominator: the pass.**

But the fact is — and the records prove it — that teams are catching up to Michigan and Ohio State.

And if you look at the teams that are making a run at these perennial powers, there's one common denominator present: the pass. Purdue quarterback Mark Herrmann, MSU quarterback Eddie Smith, Wisconsin quarterback Mike Kalasmiki — they're all drop back passers. And they're all effective at moving their team via the pass.

In fact, four teams in the Big Ten threw for over 200 yards in last week's action.

Darryl Rogers startled a lot of people when he first came to MSU. He pledged to throw the ball more, and nobody could remember a Big Ten

team that won the conference by passing — at least in recent years.

And when Woody Hayes goes out and recruits a throwing quarterback you know the trend is changing.

"It's what I've been trying to tell you, they're (other teams) moving up on us," Michigan coach Bo Schembechler said after MSU's stunning 24-15 upset last Saturday. "There's more balance in the conference."

Schembechler went a step further by saying there is more balance all over the country. He said there are only two super powers in college football, Southern California and Oklahoma.

And on Saturday, Oklahoma squeaked by with a 17-16 win over Kansas and Southern Cal was dumped by Arizona State.

"Is the balance good or bad," a reporter asked Schembechler.

"Bad, very bad," Schembechler said, with a laugh.

I think he said it only half-jokingly.

### BIG TEN STANDINGS

	BIG TEN	Overall
Purdue	2 0 0	4 1 0
Wisconsin	2 0 1	4 0 1
Michigan	1 1 0	4 1 0
Ohio State	1 1 0	2 2 1
MSU	1 1 0	2 3 0
Indiana	1 1 0	2 3 0
Minnesota	1 1 0	2 3 0
Iowa	1 1 0	1 4 0
Illinois	0 1 2	1 3 2
N'Western	0 3 1	0 5 1

### SATURDAY'S GAME:

Indiana at MSU, 1:30 p.m., Spartan Stadium  
Michigan at Wisconsin  
Ohio State at Iowa  
Minnesota at Northwestern  
Purdue at Illinois

**Your CREDIT UNION**  
... where student employees are welcome

**MSU EMPLOYEES CREDIT UNION**  
600 E. Crescent  
Ph. 353-2280

## Family Law Clinic

**Charles P. Burbach**  
Attorney At Law

**Uncontested Divorce**

No children or property division  
**\$125 plus costs**

With children - No property division  
**\$185 plus costs**

**Probate and Juvenile Court Cases**  
5020 Northwind Drive, Suite 205, E.L.  
Ph. 332-2200

*An Uncompromising Culinary Experience*

*Elegant dining, fine wines, & cocktails*

**Robert's**

*Open for Lunch & Cocktails at 11: am Mon-Fri*

*join us for Cocktails and Experience extraordinary Hors D'Oeuvres at special prices between 4:00 - 6:00*

*Open Sundays for special occasions by special request.*

For reservations call 351-8505  
101 East Grand River Avenue  
(the corner of Abbott Road)  
East Lansing

# MSU Book Store on the Move Serving You Better...

- Cowbells \$1.00
- Bumper Stickers 50¢
- Buttons 1 1/4" 25¢
- Buttons 3" 75¢
- Corsages \$2.50
- Seat Cushion \$2.50
- Footballs 75¢
- Baseball Cap \$6.50
- Superstripe \$4.75
- Big Apple Hats 50¢
- Crew Hats \$4.50
- Coaches Hats

- \$1.00
- 50¢
- 25¢
- 75¢
- \$2.50
- \$2.50
- 75¢
- \$6.50
- \$4.75
- 50¢
- \$4.50



- Golf Hat with Emblem \$1.50
- Golf Hat w/o Emblem \$1.00
- Sales - Knit Hats \$1.00
- Knit Hat \$3.00
- Knit Tam \$5.00
- Styrofoam Hat \$1.00
- Spartan Victory Jacket \$16.75
- Rain Coats 50¢
- Button Key Chain 75¢
- Fancy Key Chains \$2.25
- Pennants, Asst. \$1.00
- Pom-poms, Asst. 75¢
- Rah Rags \$1.00
- MSU Pens \$1.00
- Baseball Hat \$3.50

Visit our Mobil Spartan Shop parked outside the Northwest corner of the Stadium

- Children's Sweatshirts
- "T" Shirts
- Bibs

- Youth's "T" Shirts
- Sweatshirts

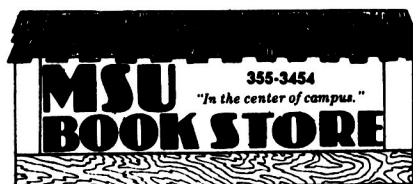


- ADULT Sweatshirts
- "T" Shirts
- Football Jerseys
- Jackets
- Caps & Hats
- Gym Shorts

For a more complete selection, come to the MSU Book Store, Located in the International Center. We're open from 9 a.m. to 5 p.m. on Saturday home games.

Spirit Shop open from 10:00 to 3:00 on Saturday away games.

## Beat Indiana at Homecoming



# Hectic Sidelines

Although it looks like chaos, sidelines are quite organized

By JEFF MINAHAN

**Editor's note:** Jeff Minahan, a senior majoring in journalism, is the head student manager for the MSU football team. Being close to the action, he wrote this story from observations during the MSU-Notre Dame game two weeks ago.

What is it like on the sidelines during a football game? This is a question many spectators have probably asked themselves as they sat in the bleachers on Saturday afternoons in Spartan Stadium.

For just a moment, place yourself down there next to head coach Darryl Rogers. The sideline is crowded with a mass of players, coaches, trainers and photographers, all concentrating on the field and what is occurring.

It is first and 10 on the 20 yard line for the Spartans. Offensive coordinator Bob Baker looks around and finds Bruce Reeves, one of four halfbacks used to run plays in the huddle. Grabbing him by the shoulder pad, Baker calmly says, "OK, here we go," and after stopping for a quick moment of careful consideration, he gives Reeves a play.

Before Reeves even reaches the huddle, Rogers is speeding toward Baker asking him what play he called. More often than not, it is the same play that Rogers had in mind. In the next 10 seconds, at least three more people will ask Baker what play was called.

The teams break their huddles. At once, the coaches begin to analyze the enemies' defensive formation. Immediately they know whether the play which was called has a chance of succeeding, and their reactions reflect this.

Rogers sees an enemy linebacker moving a step farther to the right than normal. He turns to Baker saying, "We're in

trouble, he's coming!" Baker nods in agreement.

At the snap of the ball, the linebacker charges in a blitz and the play is stopped for a loss.

The coaches always react simultaneously in a mixture of anger and frustration, exchanging comments on what went wrong or who missed an assignment, then instantly begin to analyze the situation, planning for the next play. In seconds another halfback is on his way to the huddle with a play, and the cycle repeats itself.

Approximately 30 or 40 seconds have passed.

This is a glimpse of what goes on "down there" on the sidelines during the MSU football games, a single play in a game full of this type of action.

From the sideline perspective, the game is an unending stream of incredibly intense, quick-paced analysis, thought, decision-making and emotion. And it is all as exciting as anyone could imagine.

The MSU sidelines are split in half, with the offense on one side, and the defense on the other. Similarly, the coaches split up, half on the sidelines and the other half upstairs in the pressbox overlooking the field. The two groups are in constant communication by phones, which they rely on quite a bit.

The entire area is very crowded because the players bunch up as close to the field as they can to get a good view of the game. The referees are continuously warning the players to back up off the white area to make room for coaches and themselves. But seldom are their warnings heeded. The boundary is perpetually jammed.

With all of the noise from the stands, and the shouting going on between coaches, players,

and referees, the sideline often seems like a circus of confusion. But, in reality, the whole process is quite systematic, and for the most part, organized.

The coaches, especially those making the calls, are always asking anyone who can hear for the information they must have before they can make any decisions. The down, distance to go for a first down, and location of the ball must be known as quickly as possible.

Normally, after a great deal of questions, comments and suggestions are shouted at him, coach Baker will hesitate nervously, then call a play. If

the huddle on the field and begin to make gestures with his hands. Bass will immediately pick up the call and relay it to the huddle.

Reading an offensive formation is a little more difficult for the defensive coaches. Sometimes, they know what to expect from a certain formation, but they can never be sure. On third downs, Dyer will yell over and over again, "Watch the draw, watch the reverse!"

The coaches cannot always be right, so they are completely aware of all possibilities and tendencies. Charts are used listing what the enemy ran in

and accomplish at that time. The four will then discuss all of the alternatives and agree on one play.

Reactions on the sidelines are always uniform and strong, especially in these tight situations. On a bad play, the groans and curses can be heard all the way down the sidelines. And when the Spartans score a touchdown or make a big play on defense, everyone dances.

There is also a steady stream of communication between the referees and coaches. And, contrary to popular belief, it is not all protest and complaint. The coaches often consult the referees for important information, or plead with them to watch a player who is holding or something similar.

But the referees do receive their share of verbal abuse. And it comes from almost every mouth on the sidelines at one time or another during the game.

In one instance, during the MSU-Southern California game in Los Angeles, a back judge failed to see two Trojan players in motion at one time before the snap of the ball, and the play resulted in a touchdown for USC.

For five minutes, coach Rogers, flanked by coach Chismar and a chorus of 50 or so players unleashed a wave of verbal protest that the referee will not soon forget.

Such incidents are indicative of the high level of tension present on the sidelines throughout the game.

Decisions must be made in a split second, and their consequences are monumental and lasting, putting a lot of pressure on those making them.

This fast pace and intense pressure begin when the first ball is kicked off, and does not end until the final gun sounds. Only then do things slow down and the coaches relax.

This is the sidelines. A continuous mixture of fast-paced thought, planning, decisions, screaming, jumping, and action. It is a fascinating place to be on Saturday afternoons, and is definitely the best seat in the house.

**Player's opinions are respected and welcomed by coaches during the game. For example, in a crucial situation the Spartans will call time out and quarterback Eddie Smith will come over to the sidelines for a discussion.**

Rogers is nearby, he may change the call or make a slight adjustment, but in most cases, the two are in agreement.

Often Rogers will run down the sidelines and shout a play to Baker which he wants called after the play has been sent in. The play will frequently turn out to be the one Rogers wanted.

Down on the defensive side the scene is basically the same.

Defensive coordinator George Dyer, sporting the headphones which keep him in constant contact with coaches Walt Harris and Sherman Lewis upstairs in the press box, makes all calls directly from the sidelines to signal-caller Dan Bass using hand signals.

After a brief moment of listening to opinions from upstairs, Dyer will turn and face

previous weeks on certain downs and situations. For example, under a column headed "3rd and short", is listed every play the other team ran on a third down with under four yards to go for a first down.

Both Baker and Dyer will often consult notes written on small cards which they have carefully prepared during the week. These notes contain anything from enemy weaknesses to little reminders.

Player's opinions are respected and welcomed by coaches during the game. For example, in a crucial situation the Spartans will call time out and quarterback Eddie Smith will come over to the sidelines for a discussion.

Rogers, Baker and coach Ron Chismar will huddle around him and each will begin to make suggestions as to what play should be run.

When this is done, Rogers will ask Smith what he thinks should be run, and Smith will offer his opinion, usually making reference to something he has noticed in the defense or what he thinks: the offense can



**The teams break their huddles. At once, the coaches begin to analyze the enemies' defensive formation. Immediately they know whether the play which was called has a chance of succeeding, and their reactions reflect this.**

**Rogers sees an enemy linebacker moving a step farther to the right than normal. He turns to Baker saying, "We're in trouble, he's coming!" Baker nods in agreement.**

## Field hockey heads weekend schedule

Sam Kajornsin's field hockey team is in the spotlight this weekend as it hosts the seven-team Big Ten championships Friday and Saturday at Old College Field.

The hockey team, under Amo Bessone, will open its regular season with a pair of non-conference games against Ohio State Friday and Saturday, each beginning at 7:30 p.m.

Both of the Spartan cross country teams will be on the road this weekend. Jim Gibbard's men's team will journey to Ypsilanti to take on the Eastern Michigan Hurons in a dual meet today. Eric Zemper's strong women's harriers will be in Madison, Wis., in the Big Ten championships.

## First of six important games

(continued from page 1)  
His three main receivers, tight end Mark Brammer, flanker Kirk Gibson and split end Eugene Byrd, have 55 catches between them after five games. Brammer leads the Big Ten with 19 catches, while Gibson and Byrd are tied for second with 18 each.

Against Michigan, for the first time this season, Rogers used only two tailbacks for most of the game. Steve Smith, who gained 87 yards in 13 carries, and Leroy McGee, who ran eight times for 53 yards,

will probably see most of the action again this week.

On defense, MSU is led by inside linebacker Dan Bass and tackle Melvin Land. Bass leads the Spartans in tackles with 66 and Land is next with 57.

Cornerback Mike Marshall, who intercepted two of Rick Leach's passes, hurt his back in the game and probably won't play against the Hoosiers. Byrd was also shaken up against the Wolverines and is a question mark for Saturday.

"We think Indiana's win over Northwestern (last) Saturday,

38-10, helped their program," Rogers said. "All I know is they come off the ball and run."

MSU's season, which looked so bleak only last week, took a U-turn after Saturday's win over Michigan. The game with Indiana will be the first of six important games. A loss anywhere along the line would all but end any chance the Spartans have of winning the Big Ten.

If MSU plays its last six games like it played against Michigan, those chances will never end.

**HAPPY HOURS MON-FRI 11am-6:30pm**  
½ off Drinks, ½ off Pitchers

THIS WEEKEND IN THE BAR . . .

**BRYAN LEE**

& THE STREET SHUFFLE BAND

SUNDAYS . . . BRUNCH 9am-4pm

. . . ALL YOU CAN EAT

SPAGHETTI-\$2.25

DRINK SPECIALS

**LIZARD'S**  
**UNDERGROUND**  
224 Abbott Rd. E. Lansing  
351-2285

### MICHELIN RADIALS

40,000 Mile Warranty

155-13	37.95	BK
2x 165-13	38.95	BK
165-15 w/s	39.95	BK
185-14	57.95	w/s
195-14	60.95	w/s
205-14	63.95	w/s
205-15	69.95	w/s
215-15	71.95	w/s
225-15	73.95	w/s

F.E.T. 1.41-3.29  
ALL SIZES AVAILABLE

### STEEL BELTED RADIALS

with a Life Time Warranty  
White Walls

8878-13	4	\$99.95
8878-14	4	\$119.95
8878-14	4	\$119.95
8878-14	4	\$128.95
8878-15	4	\$136.95
8878-15	4	\$136.95
8878-15	4	\$144.95

ALL NEW TIRES  
NO BLEMS

### SANDGRABBERS

RADIALS  
120R-15

\$84.00 plus F.E.T.  
Raise white letter  
11 x 15

\$44.95 plus F.E.T.

We also have Monster  
Mudders Dick Capok

### 4 PLY POLYESTER

WHITE WALLS  
36 Mo Warranty

878-13	4	\$58.95
878-14	4	\$78.95
878-14	4	\$78.95
878-14	4	\$84.95
878-15	4	\$94.95
878-15	4	\$94.95
878-15	4	\$98.95
878-15	4	\$98.95



ALL MAJOR BRANDS AVAILABLE

FREE MOUNTING • FAST SERVICE

**Payless**  
TIRE INC.  
Lansing's custom wheel and tire experts

332-6545

Hours 8:30-6:00 Daily

8:30-5:00 Sat

1054 E. GRAND RIVER EAST LANSING

1/2 BLOCK EAST OF 41st CAMPUS

# The Great Michigan Buckle Collection



Yours FREE or at a reduced price by saving with us; available exclusively from First American Bank Corporation Affiliates. This unique collection of historical symbols includes: The Great Seal of the State of Michigan, The Logging Industry's Big Wheel Wagon, The Wolverine and The Michigan State University Spartan mascot.

Each buckle is handcrafted in solid brass, and designed to fit a 1 1/4" belt. Sculptor's bronze dress buckles, made to fit 1 1/4" dress belts, are available in all four designs as well. Genuine top-grade cowhide leather belts in various-sized 1 1/4" and 1 3/4" widths can be purchased for \$6.00 each.



**How To Get Your Michigan Collection Buckles**  
Deposit \$300 into a new or existing savings account at any of our bank offices and pay just \$6.95 for a brass or bronze buckle. Deposit \$5,000 or more into a new or existing savings account and choose a brass or bronze buckle FREE! You can also purchase the buckles with no deposit for \$11.95.

Members: FDIC  
First American  
Bank Corporation

Stop in at any office of your local First American affiliate, and start your collection today.

Please note: quantities are limited.



<b>M S U</b>	<b>Offense</b>	<b>Defense</b>
	SE 84 Eugene Byrd, 6-0, 178, Jr. LT 73 Jim Hinesly, 6-2, 254, Sr. LG 55 Jody McCulloh, 6-2, 232, Jr. C 67 Matt Foster, 6-3, 228, Jr. RG 69 Rod Strata, 6-2, 240, So. RT 76 Craig Lonca, 6-3, 246, Jr. TE 7 Mark Brammer, 6-4, 233, Jr. QB 22 Ed Smith, 6-0, 174, Sr. TB 44 Leroy McGee, 6-0, 197, Sr. FB 23 Lonnie Middleton, 6-1, 217, Jr. WR 8 Kirk Gibson, 6-2, 217, Sr. PK 53 Morten Andersen, 6-1, 180, Fr.	OLB 57 Larry Savage, 6-3, 213, Jr. LT 53 Angelo Fields, 6-6, 285, So. MG 93 Bernard Hay, 6-3, 235, So. RT 47 Melvin Land, 6-3, 240, Sr. OLB 40 John McCormick, 6-2, 211, So. ILB 50 Mike Decker, 6-2, 224, Jr. ILB 49 Dan Bass, 6-1, 221, Jr. CB 1 Jerome Stanton, 6-0, 181, Jr. SS 10 Tom Graves, 6-3, 221, Sr. WS 16 Mark Anderson, 6-2, 189, Jr. CB 2 Mike Marshall, 6-3, 190, So. P 19 Ray Stachowicz, 6-1, 190, So.
<b>I N D</b>	<b>Defense</b>	<b>Offense</b>
	LE 39 Dave Stewart, 5-10, 220, Jr. LT 92 Al Leake, 6-3, 228, Jr. MG 56 Mel Patton, 5-9, 210, Jr. RT 97 Brent Tisdale, 6-4, 229, So. RE 94 George Doebla, 6-3, 220, Sr. LB 35 Joe Norman, 6-1, 220, Sr. LB 36 Aaron Arbuckle, 6-3, 220, Jr. CB 8 Tim Wilbur, 6-0, 184, Fr. CB 45 Nick Barnes, 5-11, 180, Sr. SS 2 Dave Abrams, 6-1, 185, Sr. FS 37 Dale Keneipp, 5-9, 162, Sr. P 6 Larry Lovett, 6-2, 169, Jr.	SE 88 Mike Friede, 6-5, 194, Jr. LT 73 Gerald Ahting, 6-5, 248, So. LG 64 Mark Johnson, 6-3, 248, Jr. C 50 Mark Heidel, 6-0, 230, Sr. RG 70 James Wallace, 6-2, 225, So. RT 72 Doug Peacock, 6-4, 255, Sr. TE 83 Dan Powers, 6-4, 243, Sr. QB 16 Scott Arnett, 6-3, 202, Sr. TB 28 Darrick Burnett, 5-11, 184, Sr. FB 44 Lonnie Johnson, 6-1, 194, So. WR 80 Mark Fishel, 6-0, 174, Jr. PK 5 David Freud, 5-6, 152, Sr.

# Shape up the student body ...



Keep your shape in a shape to be studied. Turn to the fun of Sports Illustrated Court Clubs for special racquetball 'n recreation.

Play vigorous singles or doubles on one of our climate-conditioned racquetball courts. If you're in the mood for a little competition, play in one of our fall leagues.

Afterwards, refresh in a whirlpool or relax in a sauna...then meet your friends in the comfortable lounge area. We're open 'til midnight every night!

**Sports Illustrated Court Clubs**

## ONE HOUR FREE COURT TIME WITH THIS COUPON

ASK ABOUT STUDENT DISCOUNT RATES

Bring this coupon in to receive one free hour of non-prime court time at any of the four locations listed below.

LANSING  
5609 W. Saginaw Highway  
321-1430

OKEMOS  
500 Marsh Road  
349-5500

FORT WAYNE  
5928 Trier Road  
482-8537

SOUTH BEND  
205 W. Edison Road  
259-8585

Expiration Date: October 31, 1978  
Limit one per person.

# The Spartans

- |    |                      |    |                        |
|----|----------------------|----|------------------------|
| 1  | Jerome Stanton, DB   | 67 | Matt Foster, C         |
| 2  | Mike Marshall, DB    | 69 | Rod Strata, G          |
| 3  | Richard Schario, K   | 73 | Jim Hinesly, OT        |
| 4  | Samson Howard, SE    | 75 | Ted Grabenhorst, OT    |
| 5  | Mike Hans, FB        | 76 | Craig Lonce, OT        |
| 6  | Mark Jones, SE       | 77 | Regis McQuaide, OT     |
| 7  | Ed Smith, QB         | 80 | Charlie Shafer, TE     |
| 8  | Morten Andersen, K   | 81 | Brett Sheeran, DT      |
| 9  | Ken Robinson, DB     | 83 | Barry Harris, FL       |
| 10 | Tom Graves, DB       | 84 | Eugene Byrd, SE        |
| 15 | Bert Vaughn, QB      | 86 | Johnny Lee Haynes, OLB |
| 16 | Mark Anderson, DB    | 89 | Ike Griffin, DT        |
| 18 | Terry Williams, DB   | 91 | Mark Brammer, TE       |
| 19 | Ray Stachowicz, P    | 93 | Bernard Hay, MG        |
| 20 | Steve Smith, TB      | 95 | Alan Kimichik, TE      |
| 22 | Leroy McGee, TB      | 97 | Craig Converse, MG     |
| 23 | Kirk Gibson, FL      | 98 | Tanya Webb, DT         |
| 27 | Al Davis, DB         |    |                        |
| 28 | Jim Burroughs, DB    |    |                        |
| 30 | Bruce Reeves, TB     |    |                        |
| 32 | Van Williams, DB     |    |                        |
| 40 | John McCormick, OLB  |    |                        |
| 42 | Derek Hughes, TB     |    |                        |
| 43 | Steve Maidlow, ILB   |    |                        |
| 44 | Lonnie Middleton, FB |    |                        |
| 45 | Andy Schramm, FB     |    |                        |
| 47 | Melvin Land, DT      |    |                        |
| 49 | Dan Bass, ILB        |    |                        |
| 50 | Mike Decker, ILB     |    |                        |
| 52 | Steve Otis, ILB      |    |                        |
| 53 | Angelo Fields, DT    |    |                        |
| 54 | Mark Tapling, C      |    |                        |
| 55 | Jody McCulloh, G     |    |                        |
| 57 | Larry Savage, OLB    |    |                        |
| 59 | Sedric Audus, C      |    |                        |
| 64 | Eric Jones, DT       |    |                        |
| 65 | Mike Sciarini, G     |    |                        |
| 66 | Mike Densmore, G     |    |                        |



Mark Anderson



# The Hoosiers

- |    |                     |    |                    |
|----|---------------------|----|--------------------|
| 1  | Steve Mitchell, QB  | 78 | Bob Iatarola, DT   |
| 2  | Dave Abrams, DB     | 80 | Mark Fishel, SE    |
| 4  | Ron Pennick, FL     | 83 | Dan Powers, TE     |
| 5  | David Freud, K      | 84 | Bob Stephenson, TE |
| 6  | Larry Lovett, P     | 88 | Mike Rriede, SE    |
| 7  | Steve Corso, FL     | 91 | John Taylor, G     |
| 8  | Tim Wilbur, DB      | 94 | George Doehla, DE  |
| 9  | Mike Lotz, FS       |    |                    |
| 14 | Tim Clifford, QB    |    |                    |
| 16 | Scott Arnett, QB    |    |                    |
| 20 | John Swinehart, CB  |    |                    |
| 23 | Ron Hodge, DB       |    |                    |
| 24 | Mike Harkrader, TB  |    |                    |
| 26 | Dave Benigni, DB    |    |                    |
| 27 | Greg McIntosh, DE   |    |                    |
| 28 | Darrick Burnett, TB |    |                    |
| 29 | Jerry Bowers, FB    |    |                    |
| 33 | Nate Lundy, FL      |    |                    |
| 34 | Tony D'Orazio       |    |                    |
| 35 | Joe Norman, LB      |    |                    |
| 36 | Aaron Abuckle, LB   |    |                    |
| 37 | Dale Keneipp, DB    |    |                    |
| 38 | Jimmy Hunter, LB    |    |                    |
| 39 | Dave Stewart, DE    |    |                    |
| 44 | Lonnie Johnson, FB  |    |                    |
| 45 | Nick Barnes, DB     |    |                    |
| 46 | Chuck Alexander, DB |    |                    |
| 50 | Mark Heidel, C      |    |                    |
| 52 | Bob Tillery, DT     |    |                    |
| 54 | Mark Ramsey, LB     |    |                    |
| 55 | Carl Smith, DE      |    |                    |
| 56 | Mel Patton, MG      |    |                    |
| 58 | Bob O'Keefe, G      |    |                    |
| 60 | Craig Walls, LB     |    |                    |
| 62 | Terry Tallen, MG    |    |                    |
| 65 | Terry Colby, G      |    |                    |
| 71 | Gerald Michko, OT   |    |                    |
| 74 | Randy Willhite, DT  |    |                    |



Dale Keneipp

State News  
Newsline  
355-8252

HERE IS A  
DIFFERENCE!  
OUR  
40TH  
YEAR

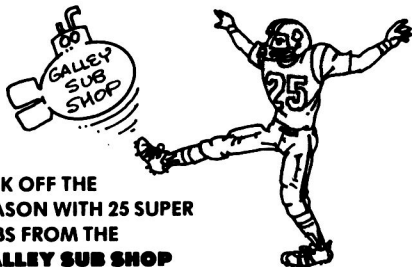
PREPARE FOR  
MCAT  
LSAT - GMAT  
GRE - VAT - DAT  
OCAT - SAT  
NAT'L MED BDS  
NAT'L DENT BDS  
NURSING BDS  
ECFMG  
FLEX  
VOE



TEST PREPARATION  
SPECIALISTS SINCE 1938  
Visit Our Centers  
And See For Yourself  
Why We Make The Difference  
Call Days, Even & Weekends

919 E. Grand River  
E. Lansing, Mi. 48823  
(517) 332-2539

Outside NY State ONLY  
CALL TOLL FREE  
800-223-1782



KICK OFF THE  
SEASON WITH 25 SUPER  
SUBS FROM THE  
**GALLEY SUB SHOP**

2850 Grand River (next to Coral Gables) 351-0304



**Authentic Mexican Food**

718 E. Grand River

Between Cedar-Pennsylvania

M-Th 11:00 am-12:00 am

Fri-Sat 11:00 am-2:00 am

Sun 12:00 pm-12:00 am



**We-haul; that's all.**

Our low rates include:

14 foot truck, insurance, gas, mileage, dolly,  
furniture pads and my labor.

**Call 372-8265**

## Spartan stats

**RESULTS: 2-3**  
 at Purdue, 14-21  
 Syracuse, 49-21  
 at Southern California, 9-30  
 Notre Dame, 25-29  
 at Michigan, 24-15

TOTAL OFFENSE:	PLAYS	YDS	RUN/PASS	AVG.	
MSU	363	1,877	815/1,062	5.2	
FOES	349	1,726	1,140/586	4.9	
<b>RUSHING:</b>	<b>ATT</b>	<b>YDS</b>	<b>AVG</b>	<b>TD</b>	
Steve Smith	42	209	4.9	1	
Leroy McGee	37	148	4.0	1	
Lonnie Middleton	31	127	4.1	1	
<b>PASSING</b>	<b>ATT</b>	<b>COMP</b>	<b>YDS</b>	<b>TD</b>	<b>INT</b>
Ed Smith	106	60	698	7	3
<b>RECEIVING:</b>	<b>PR</b>	<b>YDS</b>	<b>AVG</b>	<b>TD</b>	
Mark Brammer	19	216	11.4	1	
Kirk Gibson	18	293	16.3	3	
Eugene Byrd	18	356	19.8	2	

## Hoosier stats

**RESULTS: 2-3**  
 at LSU, 17-24  
 Washington, 14-7  
 Nebraska, 17-69  
 at Wisconsin, 7-34  
 Northwestern, 38-10

TOTAL OFFENSE:	RUSH	PASS	TOTAL YDS		
IND.	950	475	1,325		
FOES	1,225	740	1,965		
<b>RUSHING:</b>	<b>ATT</b>	<b>YDS</b>	<b>AVG</b>	<b>TD</b>	
Mike Harkrader	71	283	4.0	2	
Darrick Burnett	79	276	3.5	2	
Lonnie Johnson	33	178	5.4	1	
<b>PASSING:</b>	<b>ATT</b>	<b>COMP</b>	<b>TD</b>	<b>YDS</b>	<b>INT</b>
Scott Arnett	55	20	1	238	5
Tim Clifford	40	15	1	180	4
<b>RECEIVING:</b>	<b>PR</b>	<b>YDS</b>	<b>AVG</b>	<b>TD</b>	
Jerry Bowers	8	75	9.4	0	
Mark Fishel	7	74	10.6	1	

## Bell's Pizza

The  
 Homecoming  
 Taste-treat!

Pizza, Spaghetti,  
 Hot Oven Grinders

1135 E.  
 Grand River  
 E. Lansing  
 Phone:  
 332-0858



free  
 delivery

225 M.A.C.  
 Avenue  
 E. Lansing  
 Phone:  
 332-5027

free  
 delivery

## Laxers finish practice

To culminate what coach Nevin Kanner called a successful fall practice, MSU's lacrosse team will have its annual green-and-white game Sunday at 2 p.m. at Old College Game. Sixty players who practiced with the team this fall will participate in the game.

"There were a lot of determined players

practicing with us," Kanner said. "By having practice in the fall, we can teach our new players the basics of the game, giving them more time to prepare for the season in the spring."

Kanner also found some players from the East that have strong lacrosse backgrounds.

## KICK OFF YOUR SATURDAYS RIGHT!



Crossroads Cafeteria  
 is open on all football

Saturdays! That means you can get everything from a light snack to a whole meal without even leaving campus!

Hours-M-F 7:30-4  
 M-Th 5:30-9  
 Football Sat. 10-1

Inside International Center  
 Above MSU Bookstore  
 Right in the Middle of Campus

## WKAR-TV IS BACK ON THE AIR WITH MSU FOOTBALL

Join us Saturday, Oct. 21, 10:00pm  
 as the SPARTANS take on  
 the HOOSIERS of INDIANA



Indiana is coming off two consecutive first division Big Ten seasons. See if the Spartans can help prevent a third. All the action is back on Channel 23.

This Spartan Sports Special is brought to you in part by -

- Farm Bureau Insurance Group
- East Lansing State Bank
- Schafer's Bakeries, Inc.

WKAR-TV  
**23**

Michigan State University Television





**GERRY SKOCZYLAS**

*You just wait 'till this hoop season!*

"Yeah, well you just wait until basketball season!"

That was the only reply I could give to an unknown Michigan fan who snickered that the Wolves were going to do their usual 56-0 routine on their "Neighbors to the North" before the game in Ann Arbor Saturday.

And who was I to argue? It was a classic case of Rocky going against the champ, Daniel in the lions den, or, perhaps more accurately, David vs. Goliath.

Even though I was resigned to our fate, I still meekly wore my "Michigan State" sweat-shirt to the grudge match, which, not surprisingly, had the crowd buzzing right from the start.

You never saw so much maize-and-blue in your life. Scalpers were selling tickets for outrageous sums and hawkers were pushing everything from apple cider to congress-

sional candidates.

Unfortunately, I had to sit in the heart of the Michigan student body, while most MSU fans sat behind the Spartan bench or in the far end zone where the State cheerleaders were.

I was sitting with friends from Michigan, who, oddly enough, are also State fans, so we were a small island of comfort in a sea of insanity.

Now, even though I'm a tried-and-true Spartan fan who would root for his team to the bitter, inevitable end, I wasn't about to stand up and sing, "On the banks of the Red Cedar..." because no matter how much I'm for MSU, I'm still very fond of my teeth.

But then something happened that brought out the "smart-aleck" in me — a very dangerous quality to have in the Michigan end zone while wearing green-and-white.

What happened was that a

pair of "ultimate" U-M fans sat down in front of us — dressed from head to toe in Michigan paraphernalia topped off by those incredibly tacky maize-and-blue beanies.

One of them looked at our small island of green-and-white and actually said, "Oh my, we have to sit near THEM this year."

I mumbled something to the effect of "pardon my existence" and turned my attention to the field. A member of the MSU band, who was holding the flag of one of the Big Ten teams, tripped and fell and the whole Michigan student body was in an uproar.

I'm not saying that this group of fans were cruel, but I've seen Nazi rallies with more compassion.

Now, after State missed a field goal, U-M's Rick Leach hit a bomb on their first offensive

play and the "M" students went crazy.

"All right!" screamed one of the two diehards in front of me, "Ricky Leach is gonna give Ed Smith a passing lesson today!" (Naturally, I never let the yo-yo forget that one).

As the game wore on, the Michigan fans were strangely silent as Eddie Smith's golden arm stole the show. Most "M" fans were content to crush beer cans against their heads a la John Belushi from *Animal House* — an appropriate name for this part of the crowd.

Either that or they turned against their own team. After Leach's very first interception, they were calling him names that would've embarrassed a longshoreman. Others facetiously cried out, "Leach for Heisman!"

"Give the guy a break," I said in defense, "he's doing a good job of hitting his receivers — so what if they happen to be wearing green-and-white jerseys!"

The U-M student body's greatest display of class, however, came at halftime when Zeke the Wonderdog made a brief appearance. "Shoot the mutt!" was about the kindest thing they said. (My God, these people are even cruel to ani-

mals!)

After halftime, U-M's offense took the ball, drove 70 yards and scored like they owned the place to make it 17-7 and the crowd erupted again.

"Only a matter of time now," sneered one of the diehards in front of me. I was afraid that he was right, too, because it seemed that all of the momentum was now with Michigan and the first half was just a temporary illusion.

That is, until our offense took the field again. I could almost hear Eddie Smith say in the huddle: "OK, boys, air raid time again!" and on the first play he hit Kirk Gibson with a 15-yarder and we were off to the races.

A few plays later, Smith (you were beautiful out there Eddie, and we love you for it) hit Mark Brammer for another TD to make it 24-7 and for all intents and purposes the game was over. The only sound louder than MSU fans cheering was Bob Ufer crying.

To me, however, the most beautiful part of the afternoon was not the touchdown passes or the final, glorious seconds ticking off the clock when we had the ball on their ten.

It was with about four (continued on page 10)



Buy Your Team Football Jerseys at  
**SPORTS LETTERING**  
Team Price: \$5.50 & \$6.00  
(lettering additional)  
2227 W. Grand River, Okemos 349-5184



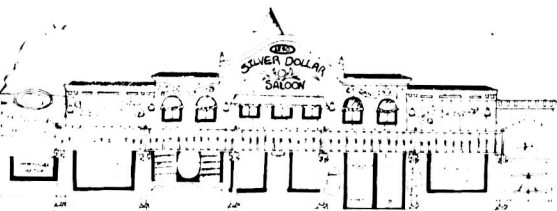
You don't have to be loud to be noticed.

With this 100% wool Harris Tweed sportcoat in classic herringbones. People will see that you know the "look of success" is often a casual, quiet statement of good taste.

HARRIS TWEED \$115<sup>00</sup>

**MARTY'S**  
EVERYTHING FOR THE MAN  
305 EAST GRAND RIVER, EAST LANSING, MI.  
Open Thursday & Friday Nights to 8:30  
332-8554

**WELCOME**



Don't let our formidable looking barricade stop you from enjoying the best homemade pizza in Mid-Michigan especially after the game! We had an MSU artist sketch a

quick glimpse for you what's going on behind all that plywood fence — an 1880 wild west saloon/dance hall designed in California by a former Disney design team.

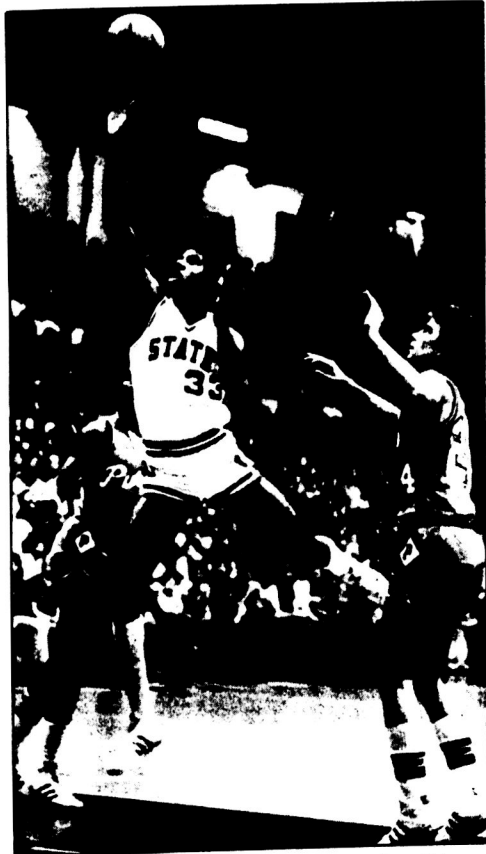
We OPEN after the game at 4 p.m. for:  
**SANDWICHES**      **HOMEMADE SOUP**  
**SALAD BAR**      **PIZZA**  
**DESSERTS**



Miller on tap and premium liquors all at discounted prices

3411 E. MICHIGAN AVE., LANSING, MICH. 48912 • (517) 351-2451

# MSU basketball team already practicing



State News/Bunny Maison  
MSU forward Earvin "Magic" Johnson, shown here in action last season, has already been picked as a pre-season All American by Playboy and he will lead the Spartans in defense of their Big Ten title.

With the football season forging ahead past the midway point Saturday for MSU, Jud Heathcote's basketball team is already practicing for the upcoming cage season.

The Spartans will have perhaps the most prestigious and hardest schedule ever assembled by an MSU team as they attempt to defend their Big Ten title.

MSU will open its season with an exhibition game against the powerful Russian National team on Nov. 14 at Jenison Fieldhouse.

Four starters return from last year's Midwest Regional runner-up team: forwards Earvin

"Magic" Johnson, and Gregory Kelsner; center Jay Vincent and guard Terry Donnelly.

Student season tickets were all sold out for the second year in a row, and sellout crowds are virtually assured for every game this year, according to officials in the ticket office.

As usual, MSU will have practices that are open to the public. They are held in the afternoon at Jenison Field House.

Spartan coach Jud Heathcote asks that spectators sit in the balcony around the playing court, so that the players will not become distracted and so that practice is not interrupted.



## PARSON'S HAIR DESIGNS

# Look up to the Professionals at Homecoming

Super cuts for guys & girls

### Parson's Hair Designs

1824 East Mich. Ave.  
Lansing, Mi 484-9342

## Irony of the win

(continued from page 9)

minute: to go with the score 24-15 and Michigan had the ball on their own 35.

After stopping an "M" runner on second down, the whole State defense turned and waved jubilantly at the MSU end zone as if to say "Thanks" for the support during the hard times and "let's enjoy this one!"

The MSU end zone responded by going completely bonkers. Then, as an encore, big-and-beautiful Angelo Fields made Leach eat some astroturf on third down and the whole MSU defense mauled him in happiness right in front of Bo and dejected Michigan bench.

Fields, Land, Bass, Anderson, Marshall, and the rest of the often-criticized Spartan defense all jumping up and down like kids in a sandbox. (Probation? What probation?)

Then, as MSU was running out the clock with about a minute to go, the two diehards in front of me got up to leave. I couldn't resist:

"What?" I asked, "Rats deserting the sinking ship?"

"Save it," snapped one of them, his maize-and-blue beanie drooping.

"Yeah," added the other, "why don't you just go back to your Cow College and study cows or something?"

My only reply, of course, was an emphatic "Moooooo!!!"

Finally, after the game, a particularly downcast "M" fan noticed my glowing "Michigan State" sweatshirt and my "Take THAT, Mighty Me-e-e-chigan" smile.

"Yeah," he said to me and my friends who were basking in the green-and-white glow of victory, "Phil Hubbard is healthy again this year so YOU just wait till basketball season!"

How ironic.

# "Everyone Needs a Little..."

**FOOD**

You're never too late for lunch or dinner!

Featuring the city's finest Fresh Fish & Seafood The Grate Steak (Kansas City, St. Louis)

**FUN**

Sample nibbles from the Win Schuler Cheese Barrel. Build a fresh salad from the Garden Greenery when dining with us.

Entertainment nightly 9:30 p.m. - 1:30 a.m.

The Grate Steak, centrally located in Lansing East Lansing area off Highway 69

**SPIRITS**

Complimentary libations Goldsmith Lounge Happy Hour Mon-Fri 4-7 p.m.

Win Schuler's

## the grate steak

E. Saginaw at Abbott East Lansing

Lunch 11 am - 4 pm Mon - Sat  
Dinner 4:10 Mon - Thurs  
4:11 Fri & Sat  
12:9 Sun

Phone 351-4200

# 'U' Homecoming activities are set for the weekend

By MARCIA BRADFORD

Tradition has survived at MSU. Homecoming, an activity which has seen years of great popularity, years of declining interest and one year of non-existence in 1975, has once again stirred student participation.

The theme of Homecoming 1978 celebrates the construction of Beaumont Tower and is entitled "A Tower of Strength for 50 years." The tower marks the site of College Hall, the first building in America erected for the teaching of scientific agriculture.

Festivities of this year's Homecoming include contests for the King and Queen and float and banner competitions.

David Bartz, a senior majoring in social science, and Margee Behrens, a senior in telecommunications, were named Homecoming King and Queen at the annual bonfire held on the intramural field across from Case Hall Thursday night.

The bonfire was preceded by the MSU marching band dividing into squads and marching through streets of East Lansing and residence halls on campus, gathering students in pied-piper fashion to lead them to the bonfire.

Several events are scheduled to take place tonight and tomorrow as part of the celebration.

- The annual Homecoming Banquet and Dance will be held at Kellogg Center from 6 p.m. to 12 midnight. It is sponsored by the MSU Alumni Association. Tickets are \$14 per person.

- ASMSU Pop Entertainment will present Daryl Hall and John Oates in the Auditorium at 8 p.m. tonight.

- Saturday's activities will begin with the judging of floats and banners from 8:30 to 10 a.m. Only those previously registered with the Homecoming Committee will be eligible.

Judging will take place at the locations of the floats and banners. Judging criteria will consist of relationship to the Homecoming theme, originality, construction and composition design, creativity and over-all effect. The top float will receive a traveling trophy.

- Alumni bus tours of campus will be given Saturday from 9 to 10 a.m. and an Alumni Coffee will be held in the Union from 10:30 a.m. to 12:30 p.m.

- Landon Field will be the site of a mini pep rally from 11:30 a.m. to 1 p.m. Saturday. Band members, cheerleaders and the Homecoming Court will be present and cider and donuts will be provided.

- Saturday's pre-game ceremonies will introduce the King and Queen and announce the winners of the banner and float competition.

- Following the game, alumni will meet under their signs in the stadium and a post-game reception will follow in Kellogg Center. Wendell Wescott, MSU carillonist for 28 years, will present concerts on Beaumont's 47-bell carillon Saturday and Sunday.

Student enthusiasm in Homecoming has occurred in cycles throughout the years. One of the contests that has undergone many changes is the Homecoming King and Queen competition.

In 1967 there were 80 contestants vying for the crown of Homecoming Queen. Eight years later when interest declined and the title had been changed from Queen to Homecoming representative, the lone candidate was a one-year-old Laura Anne Tinning, daughter of two MSU alumni.

Homecoming returned to its earlier style in 1976 when ASMSU set up a yearly Homecoming fund to reactivate student participation. A Homecoming Queen was again selected and a new concept, the naming of a Homecoming King was introduced.

"The enthusiasm of students for Homecoming activities has risen in the last two years," said Colleen Hennessy, homecoming adviser of the Programming Board. "We hope that this is the beginning of a trend."



State News/Ira Strickstein  
The angry looking Spartan in front of Theta Chi fraternity was the winning float in last years competition. MSU will be playing Indiana during homecoming weekend, October 20-22.

\*\*\*\*\*

## SPARTANS -

### Before or after the Game...

### Good food, pizza and Spirits at the . . .

# VARSITY INN

Open M-F: 11 a.m. Sat.-Sun.: 12:00  
1227 E. Grand River  
1 Blk. W. of Hagadorn  
332-6517

\*\*\*\*\*

## FOR ADULTS ONLY!

PILLOW FURNITURE IS X-RATED  
FOR EXTRA COMFORT

Bean Bags \$17<sup>95</sup>

Bean Bag Refills \$5<sup>95</sup>

PILLOW TALK FURNITURE  
Soft Line Furniture Center  
Frantor Shopping Center  
Lansing, Michigan  
351-1767

Elect

# Jim Pocock

State Rep.

## Advocate for M.S.U.

(Paid Political Announcement)

**MC**  
SPORTING GOODS

# Your Fashion Ski Center



5002 W. Saginaw  
(Just east of Lansing Mall)  
Open Daily 10am to 9pm  
Open Sunday 12am to 5pm



**WHITE STAG**  
ACTIONSPO RTS  
**GO FOR IT!**

Get back on the hill in "Boomerang," a colorful nylon Mountain Goat parka featuring elasticized waistband, zippered pockets, a D-ring for lift tickets, and front and back supergraphic design. Insulated with Polydown™, White Stag's exclusive new blend of 90% Dacron® Hollofil™ 286 polyester and 10% down, "Boomerang's" puffy collar and knit inner cuffs insure against cold. The nylon pant, "Goater," sports adjustable elasticized straps and stretch side panels for moveability and perfect fit. A high back, snow cuff, and polyester insulation protect against snow and cold. The deep zippered pocket is located on the lower leg for real convenience.

Men and Ladies  
"Boomerang"  
Mountain Goat  
Parka \$72\*\*  
Goater  
Ski Pant \$52\*\*

Available in Assortment of colors.

## 1979 SKI BOOTS

NOW IN STOCK 15 NEW 1979  
MODELS TO CHOOSE FROM

**\$59 to \$235**



### THE COMPETITION

The new top of the Racing line is Nordica's Competition. The Competition delivers all of the features that elite racers have asked for in a high performance competition boot. Nordica's dramatic new Rilsan boot offers specific features that create individual performance adjustability that the serious competitor will appreciate.

**PERFORMANCE FEATURES:**

- Individual Heel Width Adjustment
- Rear Spoiler Insert for Adjustable Forward lean
- Individual Internal Canting Adjustment
- Alignment of Center Axis of Foot
- Micro Adjustable Buckle
- New Buckle Placement
- Lasted Leather Inner Boot
- Lace Innerboot Closure System
- Shock Absorbing System

**COLORS**

Light Grey, Black.



### THE BREEZE

Nordica's Breeze is the boot Freestyle Champions and expert women skiers have established as the top performance women's boot in the world. Made on a women's last, the Breeze offers exceptional comfort and warmth, plus easy entry and buckle closure.

**PERFORMANCE FEATURES:**

- Lightweight Rilsan Shell and Shell Tongue
- Two Buckle Polyurethane Shell Cuff
- Lasted Leather Inner Boot
- Velcro Closure System
- Shock Absorbing System

**COLORS:**

Light Grey, Navy, Blue and White.

