

# Michigan State News

**COLD FEET PREDICTED**  
A flurry of snow is predicted to sweep southeast lower Michigan late today. During the day, the weather will remain cloudy with temperatures reaching a high of 36-45. Winds are southerly at 18-22 m.p.h. but will shift to northerly later today.

EAST LANSING, MICHIGAN — FRIDAY, DECEMBER 6, 1957

PRICE—5 CENTS

**SEEK 2ND WIN**  
Fresh from an impressive victory over Butler, the eagles travel to Detroit tonight where they single with U. of D. Coach Ann Besonen's hockey team leaves for Troy, Ohio Saturday where they encounter the Buckeyes of Ohio State.

VOL. 49, No. 105

## Hannah Favors Waiver Of Off-Campus Penalties

### Gleason to Appear Before Committee

Traffic Court Delays Action On Appeals Pending Decision

By DALE FRANZ  
State News Night Editor

President John A. Hannah said Thursday night that he would go along with a proposal by Student Government to waive \$25 fines levied against students who haven't driven on campus if the student will pay his registration.

### U.S. Awaits Launching Of Satellite

#### Weather, Mechanics Plague Rocket Crew

CAPE CANAVERAL, Fla. (AP) — Promised favorable winds, the Defense Department announced Thursday that another effort to launch the Vanguard satellite rocket will be made today.

If mechanical troubles which plagued the rocket crew Wednesday do not occur again, the 22,000-pound Vanguard will roar skyward during the daylight hours, carrying the tiny American "moon" in its nose cone.

Whether or not this particular rocket performs satisfactorily, missile builders made it clear they literally are shooting for the moon in overall development of space-probing craft.

In addition to reporters and photographers, scores of sightseers picked out vantage points on beaches four to seven miles distant in hopes of seeing the vanguard take flight.

C. H. Schooley, defense department information chief, told newsmen assigned to the satellite-firing vigil he would act from a command post before bed time when the countdown toward the launching hour will start.

This time, the count is expected to be only six to seven hours. An 11:00 a.m. count was scheduled for Wednesday's first try. It was halted frequently as technical bugs were found in the Vanguard's intricate mechanism and the launching effort finally was abandoned 30 minutes before zero.

A strong factor in the decision to call off Wednesday's shot was the possibility that strong high-level winds might twist or topple the rocket.

The Air Force has forecast favorable winds for Friday, said J. Paul Walsh, deputy director of the launching project.

That is one thing we look into consideration in resetting our work.

A leaking valve on the rocket's liquid oxygen tank was the major difficulty reported in Wednesday's attempt to get the Vanguard ready for its stab into space.

Before this trouble could be corrected, the crew had reached a point of fatigue where it was considered dangerous for them to carry on. Announcement that the firing had been "scrubbed" came officially an hour before midnight and 30 minutes before zero.



From this site the Vanguard rocket carrying a 6 1/2-inch test sphere possibly to become a satellite, is expected to be launched today. The launching tower is the structure second from the left.

### University President Okinawan to Study MSU Procedures

The head of an Okinawan university will get an on-the-spot picture of an American land grant university.

Genshu Asato, president of the University of the Ryukyus at Naha, will be on campus from about Dec. 14 Feb. 1.

As guest of President John A. Hannah, President Asato will attend meetings and sit in on various conferences to become acquainted with the role of the president of an American university.

A number of staff members are personal friends of President Asato as a result of MSU's mission to the Ryukyus.

Since 1951, MSU experts in various fields have been working with the University of the Ryukyus advising the faculty in the organization and development of the university at Naha.

The institution headed by President Asato has grown since its inception seven years ago to 2,000 students.

Among the programs President Asato will give special attention to here are on-campus instruction, research and extension activities of the College of Agriculture and the College of Home, Economic, and Arts.

Several new buildings have been assigned to them. A.W.S. State News, IFC and the Women's offices will be occupied. Some of the moving has already begun, it will all be completed by the beginning of winter term.

Student opinions will be carefully considered so UR suggests everyone think about it and drop a note in the Green Box in the UR office.

The advent of the new Student Services Building on our campus will bring about some changes in the Student Union.

Students Asked For Suggestions By Union Board

### Pentagon To Create Top Agency

Expected to Handle Research Projects

WASHINGTON (AP) — A new top level "advance research projects agency"—to direct study and eventual creation of such things as space platforms and weapons still undreamed of by the armed forces—will be set up in the Pentagon before the end of this month.

This is one of a series of developments or problems arising in the Defense Department in the wake of Russia's long, threatening strides in technology.

The Advance Research Projects Agency (ARPA) will be headed by a civilian, still to be selected, having a dual background of broad executive experience and scientific training.

ARPA will be an actual operating military agency, to put in effect some of the broad guidelines suggested by the newly established office of special assistant to the President for science and technology.

This post is held by James H. Killian Jr.

Additionally, the new agency will have direction of existing projects including the satellite program and the anti-missile project.

Those familiar with the situation say two basic reasons are behind Secretary of Defense Neil McElroy's decision to create this super agency for exploration and development of projects which now may seem esoteric.

(A) To prevent some valuable bit of basic research from being ignored simply because one of the armed services might not consider it applicable to its requirements.

(B) To gain control over duplication of basic research efforts and interference rivalry.

ARPA will do the basic research, the "development" and testing of an item—a missile, a moon-seeking research rocket, a platform orbiting in the fringe of space. When testing is done, an armed service would be assigned to operate the device or system.

The race with Russia to be first in the air with an atomic-driven aircraft, like the nose-lift given in satellites, has both military and prestige overtones.

Winter Term in Mex Set as Sunday Topic

Any MSU students interested in spending winter term in Mexico are invited to meet in 36 Union from 2-4 Sunday.

Ed Cowart, Princeton, N.J. sophomore will speak on the trip.

### Secretary-General Optimistic

## Hammarskjold to Mediate Israel-Syria Border Clash

DAMASCUS, Syria (AP)—Dag Hammarskjold, fresh from settling an Israeli-Jordan dispute, flew here Thursday to tackle the problem of easing the high tension on Israel's frontier with Syria.

The UN secretary general was smiling and optimistic as he stepped into an automobile with President Shukri Kuwalty for the drive from the airport to Damascus.

"The nature of my mission requires no comment," he told reporters, "but that does not mean I am pessimistic."

Foreign Minister Salah Bitar said only Syrian-Israeli armistice issues were being discussed. There has been a series of shootings along the border and each side accuses the other of warlike gestures.

Neither Bitar nor Hammarskjold believed the talks in Damascus would take long. Hammarskjold said he was leaving for New York today with a stopover in Beirut, capital of Lebanon.

In Amman, capital of Jordan, Deputy Premier Samir Rifai hailed Hammarskjold's flying visit to the Middle East as "necessary and timely."

"The secretary general felt little incidents were accumulating to the point where they might develop into something serious and he was quite right to step in," Rifai told reporters. "Fair and just decisions resulted from the talks."

As the first product of Hammarskjold's mediation, Israel Thursday sent the first supply train to Syria.

### My Fair Lad Themes '58 Spinster Spin

"My Fair Lad" will be the theme of the annual Spinster Spin scheduled for Feb. 28 in the Aerie. The all-university affair is a traditional highlight of the winter term social calendar, at which women are allowed to pull an untraditional switch—the dance is a spinster spin.

Weekly "Herald" has been linked to "Lad" for the 1958 spin. The spin is jointly sponsored by the Student Board, Tower Guild and Student Women's League. Three of the most serious group of spinners.

Conch Elio, Columbia, Mo., room and Meteor, Board is Spinster Spin general chairman, also assisting her is committee head, J. J. Depenacker, Pat Hennerly, Arlington, Va. senior, and Meteor Board, publicity. Joe Bennett, Chicago, Heights sophomore and Tower Guild, chairman and patrons. Mary Kistand, Rochester, Minn., senior and Meteor Board.

### Wheat 'Expands' New Generation Bread Loaves Fill Japan's Rice Bowls in New Diet

Let the Japanese people's appetite return for these delicious bread loaves.

Such was the blessing of a Japanese priest during a recent Shinto ceremony in Tokyo.

What prompted this incongruous ritual?

Here's a hint. It was held during "National Bread Festival Week" at the headquarters of the National Federation of Bread Makers.

### Forensic Speakers Plan Trips

## MSU Forensic Union Members Will See Much Activity This Week

MSU Forensic Union members will see much activity this week with three trips being planned.

At Anna College, Duane Pomeroy, sophomore, will participate in extemporaneous speaking in a Michigan Intercollegiate Speech League tournament. The topic will be Michigan law.

Eight students will travel to Northwestern University to take part in the annual Fresh-Sophomore Debate Tournament. The event will consist of four rounds of debate on right to work laws.

Representing MSU will be the Krys Brown, Coleman junior, Gordon Brown, Fort Collins, Colo. sophomore, Barry Bischoff, Lansing freshman, Charles Becket, Lansing freshman, Tom Case, Hazel Crest, Ill. junior, Gene Stuart, Saginaw freshman, Lynn Miner, Grand Rapids freshman and Bill Tillotson, Elmhurst sophomore.

Four Michigan State University students will travel to Iowa City today for the annual three-day State University of Iowa Intercollegiate Conference on World Affairs.

Pamela M. Nash, Pineville, La. junior, Berton S. Snopceard, Stevens, O., senior, Ralph O. Wilcox, Lansing freshman, and Thomas F. Wheaton, East Lansing freshman, will take part in the trip by Dr. Huber Eungworth, of the MSU speech department.

The varsity debaters will participate in three rounds of discussion of the question, "How Can Our Colleges and Universities Best Meet the Increased Demand for Higher Education?" Four rounds of debate will consider the subject, "Right to Work Laws."

### Farm Exchange Students to Talk

Overseas rural living will be discussed at the International Club tonight, at 8 p.m., in 21 Union.

Max Berne, Okemos grad student, who spent five and one-half months in Denmark, returning here November 28, and Fred Hemington, currently working at the State of Michigan 4-H office, who visited India two years ago, will speak and show slides of their experiences in living with farm families in these countries.

History, activities and functioning of 4-H in the United States will emphasize on the MSU program will be explained.

Members of Delta Gamma and Alpha Sigma Phi sang Christmas carols in the center of the mall at Frandor Thursday night.



Members of Delta Gamma and Alpha Sigma Phi sang Christmas carols in the center of the mall at Frandor Thursday night.

Just . . .

3

Days Left To Get Your Ride Home — thru —

**CAMPUS CLASSIFIEDS**  
HURRY AND CALL  
ED 2-1511 Ext. 2615

FRANCIS



Read Daily by MSU's 25,000 Students and Faculty
The Michigan State News is published by students without direct faculty supervision...

Editorials

OSU, Minn., Share MSU Traffic Woes

The problem of park and pay that is stirring up controversy throughout the MSU student body is not unique at this Big 10 institution.
Two other schools — namely Ohio State University and the University of Minnesota — are also experiencing difficulties.

The Ohio State Lantern in an editorial dated November 19 discussed the pros and cons to a newly proposed set of parking regulations scheduled to take effect in Columbus during the Winter Quarter.

The new parking plan will carry a tariff of \$4 for students to park their cars on campus and between \$5 and \$10 for faculty members' cars according to the location of the lot.

Registration fees will be initiated for the first time this winter. Up until now parking had been free.

Student suggestions to relieve the problem of parking 14,000 registered cars in the 6,100 parking spaces available on the Ohio campus ranged from a monthly rate system to the banning of freshmen driving and keeping persons who live within a 10-block radius of the campus from driving.

The Lantern editor takes the view that it is an "unfortunate but necessary" situation and that if the burden isn't unloaded on the students it will just "drain off the already insufficient faculty salary appropriations."

Meanwhile at the University of Minnesota, Howie Martz reports in The Minnesota Daily on the proposed contract parking to commence during the Winter Quarter.

Three parking lots with a capacity of approximately 1,250 cars will be put into use and will cost each student that uses the space \$15 per quarter.

Parking at present is limited to 3,000 spaces and Minnesota has "a commuter population of 60 to 70 percent of the total enrollment."

Alternatives offered for the contract plan and submitted to the All-University Congress' Student Services Commission were: "Deny to certain groups the privilege of parking on campus. For example, freshmen could be denied parking facilities."

"Encourage greater use of car pools" and "Encourage the use of public transportation by suggesting that persons living close to bus lines use the bus."

The immediate problem that arises under the contract plan is that of who will get priority on the limited space? Commuters?, residents of dormitories, fraternities, sororities or boarding houses?, or should it be first come first serve?

Although the commuter problem at Minnesota is unique in comparison to MSU grievances and the price range for registration is different at OSU, the parking problem is not one for MSU students alone.

This 'Auto' Do It

The traffic problem is rapidly fading away. A few words by President John Hannah (See page one story) brushed aside the red tape, empty arguments, and hopeless student screams quickly and easily. It is now just a matter of going through the mechanics of changing the regulations.

Just where the credit lies for bringing about this sudden change is a matter for speculation. On this score we feel the credit should go to Marnie Gleason, President of Student Government. He has staged a one man caper which was a thing of beauty. Similar in some ways to a bull in a china shop but effective nonetheless.

Gleason got little support from the rest of the so-called student leaders on campus, it was little Marnie who finally stepped out in front and led the student body to a new MSU. We hope this is not a flash in the pan.

Crossword Puzzle

ACROSS: 1. Hebrew liquid measure. 3. Warmth. 9. Corded fabric. 12. Palestine seaport. 13. Solemn promise. 14. Affirmative vote. 15. Poorer. 17. Dog's name. 19. Past. 20. Avalanche. 22. Hidden. 23. Episodes. 28. Native metals. 29. Skin disease.

DOWN: 2. Meaning. 4. Marrow. 5. Wooden container. 6. Corrupted. 7. Of us. 8. Brooks. 10. Garden implement. 11. Spikes. 16. Of coin. 17. Low galter. 18. Killed. 9. Black bird. 10. Watch closely. 11. By. 13. Regaled. 14. Electric particle. 15. Lyrics. 17. Plying implements. 18. Let down. 19. Boxing ring. 24. Personal possessions. 26. Not those. 27. Used a needle. 30. I have: contr. 33. Conquerors. 34. Sunbath. 36. Eat sparingly. 37. Jeweler's weights. 38. Farmer. 39. Russian ruler. 41. Grab. 43. Girl's name. 45. Bashful. 46. Regret. 48. Superlative ending. 49. Scotch uncle. 50. Night moisture. 53. At bat.

What a Time for Tourists to Arrive



Letters To The Editor Accuses S'News of Creating Issue

To the Editor: Before I start, I believe I should introduce myself. I am a member of one of the national social fraternities on this campus. Last September I entered Michigan State as a junior, having transferred from a small liberal arts college in Ohio, where I was initiated into my fraternity.

It was with full respect for the rights of the press that I read the three articles in Monday's State News. But the Tuesday issue of the paper caused me to believe that the editorial staff of the State News is attempting to create an issue, i.e. fraternity discrimination clauses. It is mainly to the editors of the State News that I would like to direct the following quotation. The quotation is taken from my fraternity magazine, specifically the article "Democracy — University of Colorado Style" by William H. E. Holmes, Jr., the editor of the magazine.

"Usually, the campus student newspaper, although supposedly representing true student opinion, directs its news reporting in such a manner as to be biased against fraternities. Through its editorial policy, the student newspaper expresses opinions antagonistic to fraternities. This type of editorial comment and news reporting is usually the first step in starting up agitation against the social fraternities — this is certainly true at Cornell, Michigan, Columbia, and Colorado."

Not all such editorials are malicious in their original intent, for the student newspaper editor often has a problem with the presence of organized groups such as fraternities help him solve. If he is honest with himself the editor realizes that due to general student apathy, his campus sheet causes little comment and is read by a surprisingly small segment of the student body.

Editorials advocating that students keep off the grass and other such unimportant topics demand little attention, but an alert editor realizes that if he attacks fraternities, he can increase the readership tremendously. No, although his intentions may be innocent as well as there is always a vocal minority willing to further the anti-fraternity cause, once the attack is made.

Let us beware that news which should be published is not expanded by editorials, thereby creating an issue and a tension not present at the time of the news. The University of Colorado has already proven the disharmony and strife among the student body which careless and innocent editorials can initiate.

Add 'Two'

To the Editor: I'm not a "Greek" but I'd like to add my two cents worth anyway. Last year, when I was a lonely freshman, I did some research for a discussion in Comm. Skills and I learned some very interesting facts about the National Inter-Fraternity Council.

The Council is a business organization and it is incorporated as a business. It maintains its office and staff in New York City. Its members and staff may or may not have been "Greeks" during their college years.

If they went to college, 5. The National Inter-Fraternity Council provides a business service similar to that of professional labor union organizations. So much for the facts I found. The question that came to my mind after I had thought about them for awhile was this: Is the NIFC really representative of what Greek letter societies stand for?

Does this mouth that speaks for the "Greeks" really speak for the "Greeks" as individuals, or autonomous chapters, have on their minds? If you're a parallel of organized labor again, I don't believe that the majority of organized labor really speaks for "John Doe" working hard today. The gulf between them is much too large.

For the same reason, I don't see how the NIFC's dicta can be representative of what I, David B. Crockett, really has on his mind. The gulf between them is also much too large. The NIFC is made up of professional organizers, engaged in making a living for themselves. It seems to me that this is the real problem you "Greeks" should be wrestling with.

When you get around to facing it you will be in a much better position to handle the minor ones, such as this "Restrictive Clause" nonsense. Dan Dodge.

Letters to the Editor

Student Asks for Self-Responsibility

To the Editor: Three cheers for Mr. Reunall, I agree with him entirely, except why not include students under "I, also?" Just why are we attending a school of higher education anyway? To be led by others — or to develop a keen sense of responsibility and leadership?

I'm quite certain, if the university gave the students more responsibilities — so that we could think on our own, there wouldn't be this constant squabbling and bitter feeling between the administration and the students, he doesn't have to attend college to learn to be spoon-fed. It seems useless for the students. One doesn't have to attend in the school paper because if one takes the initiative to write his opinions it just makes for some extra reading material. Not a thing is ever accomplished.

I suggest that the administration and the AUSG get together and seek some sort of compromise on some of these gripes and grievances. Until then, we'll just sit back and allow them to treat us as adolescents. Sometime later the administration will recognize us as adults — I hope. Edward Deeb.

Night Staff

Night Editor: Liz Truesdell
Night Ad Staff: Linda DeBriette, Nancy deManigold
Wire Editor: Pat McCarty
Night Staff: John Harton, Nancy Gilman

Every Classified Ad is an Opportunity BUY SELL!

CAMPUS CLASSIFIEDS ED 2-1511 Deadline Daily 1 P.M. Ext. 2615

CLASSIFIED RATES
minimum 15 words
1 day ..... 60c
2 days ..... \$1.00
3 days ..... \$1.30
4 days ..... \$1.50
5 days ..... \$1.65

FOR SALE
ONE PAIR 8 1/2 AAAA Lady's vic-kid, black oxford arch preservers like new. One pair catkins. N41414. Good condition. Phone IV 9-1579. 148

PERSONAL
AUCTION SALE: NEW merchandise. Household appliances, books, records, toys, etc. Saturday, December 7, 7:30 p.m., at Wolverine Pavilion, 6 1/2 miles east of E Lansing on US 10. D. Smith, Auctioneer. Hall of Distributors, phone 2-1017.

ADDITIONAL CHARGES
for each word over 15 4c per day
billing charge ..... 15c

HOUSING
APPROVED ROOMS ONE block from campus. Private entrance, parking. Also unapproved rooms with cooking facilities. 202 Harper Street. ED 2-2778. 147

REAL ESTATE
BRICK HOMES
Three and four bedroom bungalow FHA home with as low as \$1,000 down. GROESBECK HILLS "Between the cities" Enter off E Grand River on N. 24th. Shown anytime by appointment. July 25 p.m. Sunday 2-4 p.m. LA NOBLE REALTY 1516 E. Michigan IV 2-7200

AUTOMOTIVE
1958 LLOYD NOW available 40 to 50 miles per gallon. Four passenger sedan price start at \$136 plus tax. Also available in convertible, sun roof models, and others. Inland Motor Sales, 641 W. Jefferson Grand Lodge. Phone 117-W. Open evenings. 147

APPROVED ROOMS FOR MEN
water, dining terms. Phone ED 2-2778. 148

TV SERVICE SPECIAL
to students. TV Technicians. Phone 3022 E. Michigan IV 7-3550

FOR RENT
PORTABLE PUBLIC ADDRESS systems with microphones and power packs. ED 2-2022. 149

FOR SALE
1958 PLYMOUTH
Very low mileage. Phone IV 2-1176. 147

THE SPUDNUT SHOP
Open for breakfast lunch and coffee breaks. 322 MAC. ED 7-9871

FOR RENT
ATTENTION STUDENTS
Phone IV 2-1176. 147

FOR RENT
ATTENTION STUDENTS
Phone IV 2-1176. 147

TRANSPORTATION
RIDERS WANTED! EAST of Delphi, Washington, Virginia. December 18, 19, 18. Barges. Easy 1. Extension 204 or ED 2-6600

Michigan State News

Published in class days Monday through Friday inclusive, during fall, winter and spring terms, weekly during summer term, and one special freshman issue between summer and fall terms. Entered as second class matter under act of March 3, 1902 at the post office, East Lansing, Michigan. Postmaster: Please send address changes to Michigan State News, 200 E. Kalamazoo and South Front.

Editor-in-Chief: Denise Scamion
Managing Editor: Howard Sutton
Business Manager: Dave Beard
Circulation Director: Bob Ruster

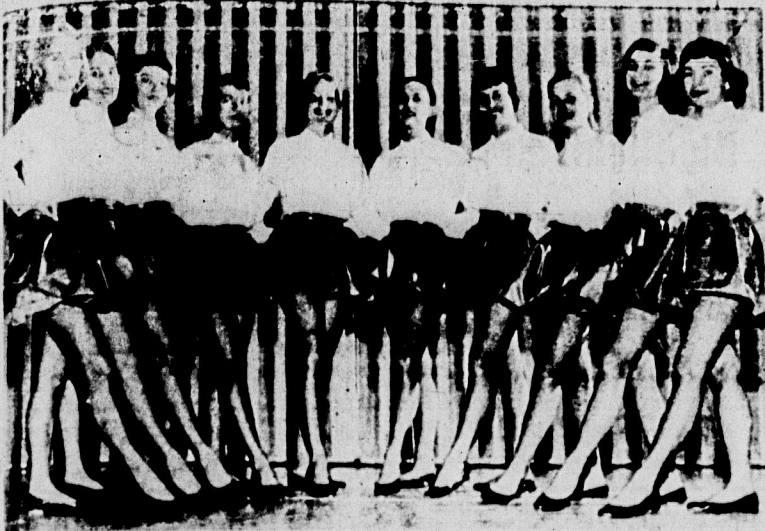
IF I TELL YOU SOMETHING LUCY WILL YOU PROMISE NOT TO LAUGH?
THIS IS VERY PERSONAL AND I DON'T WANT YOU TO LAUGH.
YOU'LL BE ASKING FOR PROMISE.
SOMETIMES I WAKE UP AT NIGHT LISTENING FOR A VOICE THAT WILL CRY 'I'M LIKE YOU, CHARLIE BROWN!'
HAHAHAHA

PERSONAL
RIDERS WANTED! EAST of Delphi, Washington, Virginia. December 18, 19, 18. Barges. Easy 1. Extension 204 or ED 2-6600



Your Key to Better Values . . .  
Campus Classifieds . . . Low Cost

## Organizations Center Plans Around Christmas Theme



The T-Bettes, Union Board chorus line which performs at different UB presentations, will be part of this Saturday's dance, 9-12 in the Union P arbor. The cords are (left to right): Sue Jones, Kay Lou Brown, Rochelle Bucklenkuk, Bev Mike, Jan James, Sandy Ferguson, Janet Porter, Denny Donover, Sue Leslie and Claudis Lambie.

Various groups will be decking the halls with ivy and holly this weekend as activities center around yuletide festivities.

No one can say Christmas spirit is lacking in a dorm. Butterfield has become an artist's paradise resulting from a Christmas decorating contest.

Three winners selected from 24 finalists will receive trophies. Roy Rappold, activities chairman, said.

West Mayo will hold a tree trimming party Friday from 7:30-12:45 p.m.

Aster Student Foundation, Triangle, Alpha Xi Delta and Delta Delta Delta will have Christmas parties at their respective houses from 9-12 p.m. Friday.

Shaw Hall will sponsor a party with a holiday theme from 9-12 p.m. Friday in the lower lounge of the dormitory.

The Astronomy Club Christmas party will be held from 8:30-11:30 p.m. Friday.

"Pre-final Blues" is the theme of the Theta Chi informal pledge party from 9-12 p.m. Friday.

Brody social committee has made plans for their term dance to be held from 9-12 p.m. Friday in the residence hall.

The Alpha Kappa Psi's will celebrate their 50th year on campus Friday with a pledge dance from 8-12 p.m.

Beta Theta Pi will close out their fall social calendar with a "Winter Hayride" Friday evening. Dancing and refreshments will follow in the Forestry Club.

Saturday begins another day of activities for students to have that last fling before final week begins.

Gamma Phi Beta and Beta Theta Pi will treat blind children from the Lansing area to a Christmas party Saturday from 1-4 p.m.

Gabriel will have an open house from 4-6 p.m. Saturday. Aster House has planned a

Christmas party for underprivileged children from 2-4 p.m. Saturday. Chi Omega and Sigma Chi have also invited Santa Claus to a Christmas Party for underprivileged children from 2-5 p.m. Saturday at the Chi O House.

Other groups planning Christmas parties for underprivileged children Saturday are Delta Zeta, Theta Chi, Phi Kappa Sigma and Alpha Xi Delta.

The pinned cords of Delta Chi will decorate the house for a Christmas party from 9-12 p.m. Saturday. Tony Roman will supply the music and Santa Claus will take care of the entertainment.

Phi Mu and Alpha Gamma Rho will celebrate the oncoming holiday season with Christmas parties at their respective houses from 9-12 p.m. Saturday.

Kappa Phi Club will hold their formal initiation from 6:30-9:30 p.m.—at the Union Saturday.

Sigma Nu and Pi Kappa Tau will hold traditional Christmas parties Saturday from 9-12 p.m. at their chapter houses.

"Palama Game" will be the theme of the Sigma Alpha Epsilon costume party Saturday from 9:30-12 p.m. at the house.

A television theme will prevail at the Theta Xi pledge party from 8-12 p.m. Saturday, with prizes for the best costumes.

Lambda Chi Alpha will have a pizza party Saturday from 8-12 p.m. Prior to the party at the house, there will be a scavenger hunt in the East Lansing area.

Pi Kappa Phi will combine Parents Day with Founders Day Sunday. Both parents and Alpha will be brought up to

date on the history of the new house.

Sunday the Theta Chi's and Tri Deltas will have a Christmas Vesper Concert at the Alumni Memorial Chapel from 8-9:30 p.m. A reception will follow at the Theta Chi house.

Phillips, Mason, West London, North Campbell and East Mayo will hold Christmas open houses Sunday afternoon in their respective lounges.

Phi Mu will give a party for their house bus boys Sunday from 6-8 p.m.

Butterfield and Rather will have a children's Christmas party at Brody from 2-4 p.m. Sunday.

Alpha Delta Pi is giving a Christmas party for all sororities on Harrison Road Sunday from 3-4:30 p.m.

Delta Omicron, women's music honorary, plans a joint caroling party Saturday evening with Phi Mu Alpha music fraternity. They will meet in the Union Lounge at 7:30.

### HOLIDAY SWEATERS

Long & Short sleeve pullovers, Cardigans, and Novelties in Fur Blends



Bulky Knits  
crew-neck  
9.95 up

WANDA HANCOCK SMARTWEAR  
226 Abbott Rd.

### Premier May Resign

## French Government Split Over Financial Problems

PARIS (AP)—France presented a new political cliff-hanger Thursday night. The villainous financial problems—had Premier Felix Gaillard's month-old cabinet badly split and possibly nearing resignation.

The Socialists, although they voted with a vote of confidence for Gaillard only this morning, were up in arms against his plan to save 90 billion francs (214 million dollars) by slashing subsidies which help hold down basic prices. They say this is tantamount to the burden on the workers who must pay more for everyday staples such as bread and sugar.

In this deadlock, the Socialists threaten to pull their ministers out of the cabinet. If they do, says Gaillard, he will resign. That would leave France without a government just 10 days before the Atlantic Council meeting.

President Rene Coty, who would have the agreeable task of finding a new premier if Gaillard goes, has said "a crisis now would be almost unmanageable." He appealed to the ministers to get together. They sat down for talks this afternoon, but there was no indication any solution was found.

Socialist Leader Guy Mollet was reported furious about the reception he got from Gaillard and Pflimlin this morning.

Gaillard is a Radical Socialist. Pflimlin belongs to the popular Republican movement. The latter, who has a reputation for talking tough, apparently refused to budge on his policy for slashing the subsidies and only partly meeting civil servants' demands for a wage increase to meet mounting living costs. Mollet described the situation as "just impossible."

Gaillard's Finance Minister, Pierre Pflimlin, returns he can make no concessions and intends to keep his 1958 budget within the expenditure ceiling he set.

Socialist Leader Guy Mollet was reported furious about the reception he got from Gaillard and Pflimlin this morning.

Michigan State News  
Campus Classifieds . . . Low Cost

INTRODUCTORY SALE  
**10% OFF**

**RENTALS**  
*Ski Equipment*

Complete Line of Skis & Ski Clothes  
all NEW rental equipment and sales  
9:30 - 9 NOW UNTIL CHRISTMAS

**Erin PAINT STORE**  
FRANDOR CENTER Ph. IV 7-0264

**CASH PAID FOR YOUR USED BOOKS**

**UNION BOOK STORE**

*Your future is our business Today!*

712 BANK OF LANSING  
PHONE IV 4-1379

PAT F. BURKE  
CARL E. BOLLMAN  
LIONEL J. DEVEREAUX  
ROBERT E. KEHL  
ROBERT J. LUNDBERG  
TONY PASANT  
LARRY R. EWING

The GREAT-WEST LIFE ASSURANCE COMPANY  
Head Office - Winnipeg, Can.

**SALE OF FUR-WOOL BLEND DRESSMAKER SWEATERS**

**9.90**

regular 12.98 and 14.98 sweaters in luxurious lambswool-and-angora sizes 36 to 40. choose from these beautiful discontinued colors: sapphire, emerald, sun yellow, gulf blue, sand, pompeii red, butterscotch, peacock, capri green, smoke grey, coffee, rouge, cream blue, kiltie red.

**Lordsburgs**

Important announcement for the graduating E E and M E

**A JACK & HEINTZ REPRESENTATIVE WILL BE ON CAMPUS**

**FRIDAY, JANUARY 24**

Check your Placement Office NOW for complete information concerning interview time and place

**JACK & HEINTZ:**  
An internationally known designer and manufacturer of electric systems and components for aircraft and missiles; also a leader in the development of customized electric motors to meet special industrial and commercial needs.

**TRAINING:**  
52-week rotational program to acquaint engineers with all J&H operations . . . engineering, manufacturing, sales and service.

**SUBSIDIZED ADVANCED STUDY:**  
Jack & Heintz pays for study toward advanced degrees which can be won at such nationally known technical schools as the Case Institute of Technology and Fenn College, both within a few miles of Jack & Heintz.

**SPECIAL OPPORTUNITIES:**  
J&H also has need for a limited number of men with majors in aeronautics, industrial engineering, engineering administration, accounting and industrial management.

**OPENINGS:**  
Excellent opportunities now open to electrical and mechanical engineers in:

- RESEARCH
- DESIGN
- DEVELOPMENT
- MANUFACTURING
- SALES
- FIELD SERVICE

to the girl on the go, give a train case or vanity of lightweight, travel-hardy vinyl with a leather-look.

a. white, blue, grey, tan or red. mirror lid. 9.98

b. white, tan, blue, grey or red. mirror lid. 9.98

c. white or chestnut; black patent. fitted vanity. 12.98

prices plus tax



### Christmas Gift Suggestions For:

Your Husband  
Your Car

- \* Tools
- \* Polishes
- \* Kar-Rugs
- \* Bernz-Lamps, Stoves and Torches
- \* Electric Drills
- \* Mirrors and Exhaust Pipe Extensions
- \* Rear Seat Speakers

Lowest Prices Biggest Discounts

## KRAMER AUTO PARTS

800 E. KALAMAZOO PH. IV 1-1335  
LANSING

## Baseball Convention at Colorado Springs in Brief

COLORADO SPRINGS, Colo. (AP)—The Minor Leagues slapped

at the New York Yankees' dynasty Thursday by creating a four-year player draft and scrapping the bonus rule.

The Yanks opposed both changes which were overwhelmingly voted at a closed session of the executive council of the National Assn. of Professional Baseball Leagues (minors).

Even efforts of the Yankees to ease the pain with compromising amendments were voted down.

These actions by the minors do not become a baseball law until upheld by the majors at their joint meeting Saturday.

The bonus law, in effect for five years, has met with growing dissatisfaction too by Major League clubs who charge there have been under-table payoffs and no suitable system for enforcement.

COLORADO SPRINGS, Colo. (AP)—The American League announced Thursday it had set up

a rehabilitation plan to help a club stricken by a major accident resulting in the death or serious injury to its players.

A club hit by such a disaster would be permitted to purchase up to 21 players from other clubs in the league, at a set price of \$75,000 each.

Should seven or more players on a club be killed or disabled in an accident, the disabled club will be permitted to select from a player "pool," created by the other clubs, from seven to 21 players at \$75,000 each. No more than three players could be selected from any one club.

Prime objective of the plan is immediate rehabilitation of a disabled club to prevent disruption or delay in the championship playing schedule and to man the disabled team with players of major league calibre.

Advised of the threat, Frick said: "Good, I hope they can get Congress to pass legislation making it possible for us to put restrictions on TV. That's what we want."

## IM Highlights

Here are the standings of housing units in all sports as of Wednesday, Dec. 4, recorded by the IM office:

FRATERNITY	
ATO	255
Sigma Nu	232 1/2
Sigma Chi	232
DTD	230
Phi Deltis	225
SAE	221 1/2
Phi Tau	215
Psi Upsilon	210

DORMITORY	
East Shaw	30
Bryan	29
West Shaw	15
Railey	8
Butterfield	5
Lumons	3

INDEPENDENT	
Veterans	162
Yikes	122 1/2
Stooges	120
Alcoholics	110
Ureys	105
Bowyer	100
Elsworth	95
Howard	87 1/2
Best	87 1/2

There will be plenty of sports activity tonight for all sports enthusiasts: tournament boxing and wrestling in Jenison and the championship finals of the touch football season are all on tonight's schedule.

In wrestling, all matches will be six minutes long, consisting of three periods each two minutes long; first period starts even, second on the mat, and third the opponents change positions on the mat. Matches start at 7:30 p.m.

The boxing matches will consist of three, minute and a half rounds. They will begin at 7:30 tonight, also.

Bryan 6 and West Shaw 2 meet on Old College Field at 7 to decide the 1957 IM Football Championship. Everyone is invited and encouraged to be on hand.

In the last 27 years, Michigan State football teams have had only two losing seasons—in 1940 and in 1954.

## Icers Engage OSU at Troy

By DAVE BARRELL

Emerging from a 10-3 defeat by the Detroit Red Wings, Tuesday, Michigan State's hockey team travels to Troy, Ohio Saturday to tangle with the Buckeyes of Ohio State in its second encounter of a 24-game schedule.

The exhibition contest at Hobart Arena will begin at 8.

The Buckeyes, although they do not have varsity status, boast 11 wins against no losses over the last two years — during which they played under club status. The hockey club is sponsored by the IM department, faculty and students of OSU.

The 11-0 record was achieved against teams in the Ohio Inter-collegiate Hockey League, consisting of Denison University, Fen College, Kent State, Ohio Wesleyan, Ohio Northern and soccer team did last year."

Bessone is taking a full-time man traveling squad in top physical condition with him on the trip.

Heading these will be Dick Hamilton, Ross Parke, and Freddie DeVuono, the fast skating first line; Bob Jasson and Bob Norman, top-flight defensemen, with Joe Selinger, stellar goalie tending the nets.

The pucksters will start the regular campaign in the rugged



ROSS PARKE ... last year's top scorer ...



DICK HAMILTON ... capable stickman ...

Western Inter-collegiate Hockey League Dec. 17 in Den Hall at hosts to last year's NCAA champions, Colorado College.

The University of Denver, favorites with Colorado in the W.I.H.L., will come to East Lansing for a two game series on Dec. 20 and 21.

Ohio State is playing two eastern schools besides Michigan State, outside the O.H.L., in their quest for varsity recognition. The schools, Cornell and Colgate, while not considered powers in the East, are deep in experience.

## Attendance Record Set At Stadium

More people watched Michigan State perform in football at home in 1957 than in any other year.

The total home attendance in Spartan Stadium this fall was 338,963, surpassing the previous home season lead by more than 10,000. The former mark of 328,949 was set in 1953 with a five-game schedule. On the way to setting the all-time home mark, the Spartans drew a record single-game attendance of 75,391, against Notre Dame. The average home crowd this year was 59,760.

The over-all average crowd in 1957 was 60,963 per game.

## Schmidt Resigns PCC Position

SAN FRANCISCO (AP)—Assistant Commissioner Victor O. Schmidt resigned Thursday from the beleaguered Pacific Coast Conference effective June 30.

Although Schmidt frequently ran into criticism, his resignation at the end of the PCC season meeting came as a surprise.

Two days ago a surprise vote voted not to remove Schmidt from his office, in effect a vote of confidence in Schmidt.

New!

Old Spice SHAMPOO FOR MEN

IN UNBREAKABLE PLASTIC!

SHULTON  
New York • Toronto

Formulated for a man's hair and scalp. Conditions while it cleans. 1.25

For that "Whistle Look" try our Expert Cleaning and Laundry

Free Parking In Rear

Louis shirt laundry • dry cleaning across from new student services bldg.

623 E. Grand River

COLLEGIATE, PLUS!

Frames to complete the Ivy look. Casual styles to compliment any guy's or gal's wardrobe.

See your eye doctor today and then see us for a complete selection.

EAST LANSING OPTICAL CO.  
Above Jacobson's  
ED 2-3916

DANCING

Sat. Dec. 7 to the Music of Eldon Gates and His Eight Piece Orchestra

Waltzes • Foxtrots • Rumbas • Bunnyhops • Swing • Etc.

FREE Arthur Murray Dance Lessons Every Saturday From 8-9 P.M.

Open 8-1 A.M. Admission 75c

We serve Pizza and Refreshments No Age Limit

THE DELLS  
Central Michigan's Finest Ballroom  
Featuring America's Finest Bands

Phi Delta Theta Presents

TOM LEHRER

His Songs  
His Wit  
His (so called) voice  
His Piano

IN PERSON  
Plus Jo Mapes

LANSING

CIVIC CENTER  
small auditorium Washtenaw Street Entrance

Friday, January 10, 1958 8:30 p.m.

Tickets \$2.00

Available at  
Paramount News Co. Pine's Record Shop  
Campus Music Shop Andre's Record Shop  
State Record Shop J. W. Knapp Records

Also tickets may be purchased from Phi Deltis  
(Phi Deltis' Portion of Proceeds to go to Campus Community Chest)

LUCON PALE LITE H-U-R-R-Y Last 2 Days!

EAST LANSING • PHONE ED 26944  
Feature: 1.00 - 3.20 - 5.30 - 7.50 - 10.00

RITA HAYWORTH  
FRANK SINATRA  
KIM NOVAK  
Pal Joey

Cartoon Novelty News

STARTING SUNDAY  
CARY GRANT  
JAYNE MANSFIELD • SUZY PARKER

PRICES THIS ENGAGEMENT ONLY:  
UNTIL 5:30 P.M. 90c EVENINGS \$1.25 CHILD 25c

Van Dervoort's  
213 E. Grand River  
ED 2-2111

for Christmas giving . . . or for your winter fun!

QUALITY SKI CLOTHING

PANTS \$8.95 - 47.95

JACKETS 9.95-19.95

SWEATERS \$8.95 to 20.95

Authentic Norwegian interpretations executed in the big needle "knit" that breathes on imported Swiss machines. Warm and handsome, 100% VIKER wool.

HEAD SKI

SKIS  
A complete selection of quality skis, imported and domestic, in a full variety of prices.  
\$35.00 - 98.50

Inquire about our SKI RENTAL

Jersild

\$250 includes: ROUND TRIP TRANSPORTATION  
HOTEL ACCOMODATIONS  
MEALS  
TRANSFERS  
TIPS  
COLLEGE WEEK ACTIVITIES

BERMUDA SPRING TOUR

COLLEGE TRAVEL OFFICE 130 W. GRAND RIVER ED 2-9667

HEIGHTS AUTO PARTS  
2939 N. EAST U.S. 27  
PH. IV 2-3616 or IV 5-2446

QUALITY EXHAUST SYSTEMS INSTALLED WHILE YOU WAIT!

MIDAS MUFFLERS

AS LOW AS 6.95 FOR SOME CARS

UNCONDITIONAL GUARANTY

INSTALLATION FREE  
MIDAS MUFFLER CLINIC  
130-132 W. BOWEN  
PH. IV 4-5013



# Cagers Meet U. of Detroit

Sellout Expected At Detroit

WKAR-FM to Air Contest at 8:30

LARRY WRUBLEWSKI State News Night Editor

Coach Fordy Anderson's men make their first of intra-state trips by traveling 81 miles to Detroit to meet the Titans tonight.

The other trip will be to the University of Michigan later in the year.

The second non-conference tilt of the season for the Spartans is scheduled to begin at 8:30.

University of Detroit officials expect that tickets will be on sale at the box office for \$1.75 and \$2.50.

Students planning a party to obtain tickets, although a sellout through is expected to view the skirmish.

Students unable to make the trip will hear the broadcast of the game over WKAR-FM.

Anderson plans to start the season with which opened the season Monday night against the Titans.

The means center John Ford, forwards Larry Hedden and Bob Anderson and guards Dick Quigley and Dave Scott will be at their positions for the final jump ball.

Anderson also disclosed that Hedden would be acting floor man if he filled this role and Butler.

In the campaign's inaugural game played his best game of a college career. He also averaged for half of the 14 points by Buppert in the 14 ball goals and two free throws.

Green also controlled the accounts by grabbing off rebounds.

Anderson met with Anderson by scoring the points. The runny forward will be counted on to be the most balanced and dominant feature of last year's team.

Anderson's defensive player of the year is expected to turn in a usual fine performance on a defense and offense.

Quigley was second to Green in the Butler finals, notching points on four baskets and many tosses. The classy guard starts the notion of a fast Spartan zone offense.

Anderson hopes will overcome the Titans.

It is said it will be a sort of preview for the junior state honors by playing at Detroit Cooley High school.

Although getting only 12 points in his first starting game, Spartan fans will hear a lot from Scott before the season begins.

Senior forwards Horace Baker and Lance Olson filled in adequately Monday.

Anderson decided to make a personnel change.

The newcomers contributed a decrease of nine points in carrying out their respective defensive assignments.

Today the cagers went through a comparatively stiff practice which stressed sharpshooting of the various offensive items.

Senior cagers will make the trip to the Motor City.

Don Calahan's Titans met their season on the night of the Assumption Assumption game.

Starting in Detroit will be Don Hulse, forwards Bob Baker and Ralph Uehinson and Mike Walsh and Ben Schaback at guards.



An unidentified Bryan 6 player moves into position on a pass as two ATO defensemen attempt to break up the play.

## Decide Crown Tonight

# Bryan, W. Shaw Win Playoff Tilts

By GARY GILDNER

Bryan Hall's little Clyde White proved to be the right man in the right place Thursday night as he sparked his team over a 14 point deficit to down ATO, 20-14, in the semi-championship playoff.

The win puts Bryan 6 and W. Shaw 2 who edged W. Shaw 3, 13-12 in the other semi-championship tilt in the championship game tonight.

ATO took an early seven point lead on an 11 yd scoring pass from Tom Kraft to Jim Banks. Kraft hit Al Berkson for the conversion.

After the kickoff Bryan drove down to ATO's four yd line but lost the ball on downs.

ATO took over and passed down to Bryan's three where they scored again on Kraft's 11 yd pass to Tom Kraft.

ATO's Tom Kraft and Bryan's Clyde White combined for the PAT.

Just before the end of the first half a Bryan TD was nullified for having two men on the line.

Early in the second half Bryan stormed back on John Schwartz's scoring heave that traveled 35 yds. in the air to the speedy White. Schwartz converted to Chuck Brunner.

Bryan's second minutes later when Frank Dambrowski inter-

## Swimmers Open at Ann Arbor

Kickoff of another season Saturday is Coach Chuck McCaffree's Spartan Swim Squad who will be on hand at the Michigan AAU meet in Ann Arbor to clash with the State's best college swimmers.

The defending Big 10 champs are faced with filling spots left by the graduation of such stars as Paul Renko, Jim Clemens, John Mason, Don Morey and Frank Parrish.

The AAU, an individual test, should give McCaffree an idea of 1957-58 prospects and test the prospective team leaders.

Team strength was dealt a blow when top sprinters Ken Gost and Larry Ellis dropped out of school, but returning are many capable performers.

Back are sprinters Gordy Fortell, Don Patterson, Jim Lanker and Barry Leeds distance men Dennis Baker, Al Coxon, Wally Dohler, Doc Edington and Phil Gantel. Others are: Rog Harrison, Tom Kwansey, Les Loebach and Bob Miller.

Also back from the 1956 squad are Dave McCaffree, Don Nichols, Dean Taylor and Bob Thomas.

Up from the freshmen and expected to give additional strength is Olympian Billy Stuart, diver Jerry Chadwick, Frank Madine in the breaststroke, and State butterfly champ Art Manwell.

After a highly successful record last season, veteran coach McCaffree can only hope for the best. His tankers took home three individual titles at the '56 AAU with Harmon, Nichols and Renko scoring.

The season gets underway in full winter term with a dual meet at Iowa State Jan. 6, followed by the Big 10 Relays here Jan. 11.

# Sports

Night Sports Editor — Dave Barrett  
MICHIGAN STATE NEWS  
December 6, 1957 Page Five

## Classy Boston Bruins Subdue Red Wings, 7-2

BOSTON (AP)—Displaying 20 minutes of great hockey, the Boston Bruins struck for four first period goals, Thursday en route to a seasons record 7-2 victory over Detroit at the Garden.

Don McKenney, Bronco Horvath and Vic Stasiuk notched a goal and two assists each as the Bruins bettered their season's high goal production in the National Hockey League contest.

The previous best was six against the New York Rangers and the Bruins did no better than six a year ago.

The victory, fourth in five decisions against the Red Wings

## USE CAMPUS CLASSIFIEDS

Campbell's Suburban Shop • Campbell's Suburban Shop • Campbell's Suburban Shop • Campbell's Suburban Shop • Campbell's Suburban Shop • Campbell's Suburban Shop • Campbell's Suburban Shop • Campbell's Suburban Shop • Campbell's Suburban Shop • Campbell's Suburban Shop

Of Course you Know he'll like a Gift from Campbell's

No Charge for boxing and gift wrapping  
321 E. Grand River

Campbell's Suburban Shop • Campbell's Suburban Shop • Campbell's Suburban Shop • Campbell's Suburban Shop • Campbell's Suburban Shop • Campbell's Suburban Shop • Campbell's Suburban Shop • Campbell's Suburban Shop • Campbell's Suburban Shop • Campbell's Suburban Shop

**BEFORE EXAMS!**  
TREAT YOURSELVES TO THE ORIGINAL ITALIAN SPAGHETTI!

at **MARIA'S Restaurant**  
OPEN 'TIL 3:00 A.M.  
1810-1812 S. WASHINGTON LANSING IV 9-3196

**GIVE RECORDS FOR CHRISTMAS**

Largest stock of hi-fidelity recordings in E. Lansing

Jazz Popular Classical

Plus Layaway Plan, Gift Certificates, Mailing Service

**SEARLES RECORD SHOP**  
(across from Berkey)

**HAVE YOUR TYPEWRITER Cleaned & Checked During the Holidays**

**BRINES BUSINESS MACHINES**  
Phone Bath 2519  
for Free pick-up & Delivery

**Sorber's AUTO WASH**  
920 E. Michigan Ave. IV 4-7335  
WHITEWALLS STEAM CLEANED  
Salt & Chloride Removed  
Open 8:30 - 6:00 P.M. Sun. 9 - 3 P.M.

**WHIRL INTO AN EXCITING HOLIDAY SEASON LOOKING YOUR LOVELIEST.**

... let Wallace's glamorous selection of eyewear add to the season's enchantment.

Knowing that you look your best is an assurance you always have with our custom - inspired eyeglass frames. See the excellent selection at either location.

eye examinations by Dr. W. C. Jensen  
Registered Optometrist

**WALLACE OPTICIANS**  
Main Theater Bldg., East Lansing • Ph. ED-3-3117  
also offices Downtown at 167 N. Washington-Ph. IV 2-1173

**CHARMS! CHARMS! CHARMS!**

THE PERFECT GIFT ... for your loved ones and for yourself ... designed and fashioned in 14 karat gold and sterling

Each and every one is truly a conversation piece!

8.25 14 Kt 2.75 N.S.  
3.30 N.S.  
1.35 N.S.  
10.00 14 Kt  
2.25 Sterling  
1.25 14 Kt  
1.25 Sterling

**Ranney Jewelers**  
Next to State Theater

**FALL GRADUATES CAPS and GOWNS ARE READY.**

**BRING YOUR RECEIPT TO UNION BOOK STORE**

**STATE SUNDAY!**

NO ADVANCE IN PRICES! EXCLUSIVE FIRST RUN SHOWING!

**"TREMENDOUS ... done in colors of which a Rembrandt might be proud!"**  
— CREATOR, N. F. TITUS

**"THE YEAR'S MOST EXCITING FILM"**  
— NEWSWEEK MAGAZINE

**"A mastery so complete that 'Richard III' in this generation can surely never be himself again!"**  
— LIFE MAGAZINE

**"Olivier and a brilliant cast bring new life to Shakespeare!"**  
— LIFE MAGAZINE

**Richard III**  
Produced and Directed by LAURENCE OLIVIER  
COLOR BY TECHNICOLOR  
NOTE ... SEE TO THE RECAPTURE OF THE PRODUCTION OUR FIRST SHOW MONDAY DEC. 8th WILL BEGIN AT 6:00 P.M.

LAST 2 DAYS — 1 FIRST RUN FEATURE!  
Richard Egan **"SLAUGHTER ON 10th AVENUE"**  
— PLUS — JOCK MACONEY **"ELEIN CASTLE"**

**LATE SHOW TONIGHT AT 10:00 P.M.**

**"GET MORE OUT OF LIFE ... GO OUT TO A MOVIE"**



# Administration Reveals Plan For 1958 Labor Legislation

ATLANTIC CITY, N. J. (AP) — The Eisenhower Administration Thursday took the wraps off its 1958 labor legislation program aimed at smoking out crooks and racketeers from the labor movement.

It includes provision for full disclosure of union funds, secret ballot election of union officers, tightened bribery restrictions and broad recommendations for revision of the Taft-Hartley act.

The program was outlined in detail by Secretary of Labor Mitchell to the second constitutional convention of the AFL-CIO. The federation executive board will take up the program at its meeting Tuesday.

Mitchell said later the program has the approval of President Eisenhower, who saw it as late as Wednesday, and that it has been discussed with Republican leaders of both the House and Senate.

He said the proposals revealed Thursday will be in addition to the administration's regular labor program calling for such

things as an increased minimum wage.

The labor secretary said the administration does not intend to propose any change in the present restrictions on labor political spending and will "vigorously oppose" any legislation designed to "burst unions." This includes any federal right-to-work law he declared.

There have been suggestions, mainly from Republican congressmen, that tighter restrictions on labor political spending be enacted.

As revealed Thursday, the program contains a recommendation banning "hot cargo" clauses prevalent in Teamster Union contracts.

Under such contracts the union gets an employer to refuse to handle material supplies by a second employer involved in a dispute with the union.

The program also calls for elimination of the non-Communist affidavit clause in Taft-Hartley.

The elephant's trunk contains more than 40,000 muscles.

## EUROPE

Summer 1958 — To Date  
We'll see the world, plus Rome, Africa, Egypt, Greece, Italy, Germany, Czechoslovakia, Poland, Denmark, and Ireland. A complete, round-trip tour for the group in April and early May to be held in Europe. Write to: EUROPE SUMMER TOURS, 215 Superior Street, Fordland, Calif.

**MICHIGAN THEATRE** PHONE IV 7-7311

TODAY IS SUPER-BARGAIN DAY!  
See 2 HITS AT NO ADVANCE IN PRICES  
Come as late as 9 p.m. and see

**"BOMBERS B-52"**  
NATALIE WOOD  
KARL MALDEN in

PLUS  
The Hilarious New Comedy!  
The Elephant's Trunk

UNIVERSAL INTERNATIONAL Presents  
**JUNE ALLYSON**  
**DAVID NIVEN**  
**MY MAN GODFREY**

MISSIE ROY OF LANDIS - ROBERT KEITH  
EVA CARON - IAN RICHMOND - JEFF DONNELL - MARTINA HYER

"Get More Out of Life... Go Out To A Movie"

### Coeds to Attend Van Hoesen Tea

The first invitational Christmas tea of Van Hoesen Hall will be held Saturday from 2-5. Dress will be formal.

The purpose of the tea is to acquaint the guests with Miss Sarah Van Hoesen Jones, for whom the hall was named, and to acquaint them with the hall.

Miss Jones, a University of Chicago graduate, received the honor in recognition of her great interest and contribution to MSU.

Guests include administrative and staff officials, local and distant advisors of all residential halls and presidents of all fraternities and sororities on campus.

STARTING SUNDAY NO ADVANCE IN PRICES

**LUCON** EAST LANSING - PHONE ED 2-2722

IT'S SHEER **CARY GRANT**

MAGNETISM **JAYNE MANSFIELD**

AND SHEER **SUZY PARKER**

DELIGHT! **KISS THEM FOR ME!**

What an affair to remember! It's the story of the four-day leave... the guys who were on the town and the girls who were out of this world!

From 20th Century Fox  
Produced by **JERRY WALD** - Directed by **STANLEY DONEN** - Screenplay by **JULIUS EPSTEIN**

**LEIF ERICKSON** with **LARRY CLYDEN**, **NATHANIEL FRY**, **WERNER KLEMPNER**  
COLOR BY DELUXE **CINEMASCOPE** with the wonder of STEREOGRAPHIC SOUND

# Attend Church This Sunday



## East Lansing — Campus Churches

<p><b>METHODIST CHURCH OF EAST LANSING</b></p> <p>Wilson M. Tennant, Minister</p> <p>Sunday Services</p> <p>9:30 a.m. - Worship</p> <p>Red Cedar School</p> <p>10:30 a.m. - Church School</p> <p>Red Cedar School</p> <p>One Block West of S. Harrison Rd.</p> <p>On Sever Dr.</p> <p>11:00 Worship Service</p> <p>State Theatre</p> <p>Abbott Rd.</p> <p>Nursery Available</p>	<p><b>ALL SAINTS EPISCOPAL CHURCH</b></p> <p>University Episcopal Center</p> <p>200 Abbott Road - ED 2-1311</p> <p>Rev. Gordon M. Jones - Rector</p> <p>Rev. John F. Porter - Chaplain</p> <p>SUNDAY SERVICES</p> <p>8:00 A.M. Holy Communion</p> <p>9:30 A.M. Family Service and Church School</p> <p>11:00 A.M. Morning Prayer or Holy Communion and Sermon</p> <p><b>CANTERBURY CLUB</b></p> <p>5:30 P.M. Sunday</p>	<p><b>FIRST CHURCH OF CHRIST SCIENTIST</b></p> <p>700 E. Grand River</p> <p>SUNDAY SCHOOL</p> <p>9:30 University Students</p> <p>11:00 All Others</p> <p>SUNDAY SERVICE</p> <p>11:00 - 1:00 P.M.</p> <p>Reading Room</p> <p>124 W. Grand River</p> <p>Mon., Tues., Thurs.</p> <p>9 a.m. - 5 p.m. and 7 p.m. - 9 p.m.</p> <p>Wed., Friday</p> <p>9 a.m. - 5 p.m.</p> <p>Saturday 9 a.m. - 1 p.m.</p> <p>Sunday 3 p.m. - 5 p.m.</p> <p>All are welcome to attend Church Services, and visit and use the Reading Room.</p>	<p><b>PEOPLES CHURCH EAST LANSING</b></p> <p>EAST LANSING</p> <p>Interdenominational</p> <p>200 West Grand River at Michigan</p> <p>REV. C. BRANT TEFPT, Pastor</p> <p>Golden Anniversary Services</p> <p>9:30 a.m. and 11:00 a.m.</p> <p>SUBJECT</p> <p>"ON GROWING UP"</p> <p>Sermon by Rev. Tefpt, including a series of addresses by Dr. Simms, Rev. Porter, and Rev. Schramm.</p> <p>Church School</p> <p>9:30 A.M. 11:00 A.M.</p> <p>Crib room through high school age</p>	<p><b>CHRISTIAN STUDENT FOUNDATION</b></p> <p>AT PEOPLES CHURCH</p> <p>100 W. Grand River</p> <p>Sunday, Oct. 20</p> <p>9 a.m. Breakfast Forum at College House. Coffee, Donuts and Discussion.</p> <p>9:30 and 11 a.m. Worship Services at Peoples Church.</p> <p>6-8 p.m. Campus Vespers beginning with buffet supper in College House.</p> <p>A film, "Child of Bethlehem" will be shown. Following this members will decorate the Christmas tree.</p> <p>EVERYONE WELCOME</p>
<p><b>EAST LANSING CHURCH OF CHRIST</b></p> <p>Meeting in the American Legion Memorial Center</p> <p>On Valley Court</p> <p>(Just off W. Grand River)</p> <p>SCHEDULE OF SERVICES</p> <p>SUNDAY Bible Study 10 a.m.</p> <p>Worship 11 a.m.</p> <p>Evening Services 4:30 p.m.</p> <p>WEDNESDAY Bible Study 7:30 p.m.</p> <p>Sunday Morning, 10 a.m.</p> <p>SPECIAL CLASS FOR COLLEGE STUDENTS</p> <p>WILLIS C. OWENS, Minister</p>	<p><b>EAST LANSING TRINITY CHURCH</b></p> <p>314 MAC Avenue</p> <p>A Bible Teaching Ministry in the Center of East Lansing</p> <p>E. EUGENE WILLIAMS, Pastor</p> <p>WORSHIP SERVICES -</p> <p>11:00 a.m.</p> <p>"A NEW KING"</p> <p>7:30 P.M.</p> <p>"FROM RICHES TO RAGS"</p> <p>OTHER SERVICES</p> <p>9:45 a.m. Sunday School with a class for University students</p> <p>6:15 p.m. TRINITY COLLEGIATE FELLOWSHIP</p> <p>All University Students Welcome</p> <p>7:00 p.m. Prayer and Bible Study each Wed. night</p>	<p><b>ST. JOHN CHURCH CATHOLIC STUDENT CENTER</b></p> <p>327 MAC. Ave.</p> <p>Sunday Masses 7:30 8:45 10:00 11:30</p> <p>Daily Mass 6:45 A.M.</p> <p>Confession Saturday</p> <p>4:00 to 7:30 P.M. - 7:30 to 9:00 P.M.</p> <p>Newman Club Event:</p> <p>Student Center</p> <p>Phone ED 2-5911</p>	<p><b>EASTMINSTER PRESBYTERIAN CHURCH</b></p> <p>Services at East Lansing</p> <p>Junior High</p> <p>SUNDAY 10:00 A.M.</p> <p>Rev. Robert L. Moreland, Pastor</p> <p>COSMOS MEDITATION - "Grace Upon Grace"</p> <p>The College Age Church School Class will be held at 9:00 A.M. every Sunday in the room by the west entrance.</p> <p>Mr. and Mrs. Tom Green, Leaders - Mr. and Mrs. Theron Mills sponsors</p> <p>Coffee Will Be Served</p> <p>Sunday School</p> <p>for</p> <p>Cribbery Through Junior High</p>	
<p><b>MARTIN LUTHER CHAPEL</b></p> <p>(Missouri Synod)</p> <p>414 Abbott Road</p> <p>Chapel ED 2-0718</p> <p>Parsonage ED 2-4617</p> <p>SUNDAY SCHEDULE</p> <p>Morning Worship 9:30 and 11 a.m.</p> <p>Cost Supper</p> <p>Lambda Beta Program 8 p.m.</p> <p>Vespers 8:15 p.m.</p> <p>DR. GERHARD MUNDINGER</p>	<p><b>UNIVERSITY LUTHERAN CHURCH</b></p> <p>(National Lutheran Council)</p> <p>Division at Ann Street</p> <p>Charles Kihnastek, Pastor</p> <p>Donald W. Herb, Campus Pastor</p> <p>Church ED 2-5371</p> <p>Parsonage ED 2-2733</p> <p>SUNDAY SCHEDULE</p> <p>Services: 9:00, 10:15, 11:30 a.m.</p> <p>University Fireside 10:15 a.m.</p> <p>LUTHERAN STUDENT ASSN.</p> <p>Sunday Evening Fellowship</p> <p>8 p.m. - Supper</p> <p>7 p.m. "STUDENTS &amp; FACULTY FRIENDS OF POETS" by Charles Ross, Geography Department Wednesday 7:00 a.m. Communion Breakfast</p>	<p><b>EDGEWOOD PEOPLES CHURCH</b></p> <p>Interdenominational</p> <p>400 N. Hazardon Road</p> <p>(3 blocks north of Grand River)</p> <p>Rev. Truman A. Morrison, Minister</p> <p>7:30 a.m. &amp; 11:00 a.m.</p> <p>Sermons by Rev. Truman Morrison</p> <p>Church School at 9:30 and 11 a.m.</p> <p>for Nursery through 4th Grade</p> <p>Junior High Class - 9:30</p> <p>Senior High Class - 11:00</p> <p>High School Fellowship - 7 to 9 p.m.</p>	<p><b>EAST LANSING UNITY CENTER</b></p> <p>425 W. GRAND RIVER</p> <p>MORNING WORSHIP AT 11 A.M.</p> <p>Sunday School 11 A.M.</p> <p>DR. DON CIRCLE, Solist</p> <p>Wednesday Meeting 8:00 p.m. - Healing Meeting</p> <p>Affiliated with Unity School, Lee's Summit, Mo.</p> <p>RONIE G. MILLER, Pastor</p> <p>HELEN CLARK, Organist</p> <p>OKEMOS BAPTIST CHURCH</p> <p>NEAR THE CAMPUS</p> <p>Rev. Howard Johnson, Pastor</p> <p>Invites You</p> <p>Morning Service 10:00 a.m.</p> <p>Sunday School 11:15 a.m.</p> <p>Young Peoples 6:30 p.m.</p> <p>Sunday Night Service 7:30 p.m.</p> <p>Enjoy friendliness good music a church</p> <p>Please call ED 2-0785 for a ride</p> <p><b>CHURCHES</b></p>	
<p><b>UNIVERSALIST-UNITARIAN CHURCH</b></p> <p>8 Holmes at Prospect</p> <p>(2 blocks South of Sparrow House)</p> <p>Sunday Service - 11:00 A.M.</p> <p>Church Sch. &amp; Nursery (Rides from Union - 10:30 A.M.)</p> <p>Abbott Road Entrance</p> <p>Adult Fellowship 2nd Sun 7:30 P.M.</p> <p>Couples Club - 4th Sun 7:30 P.M.</p> <p>UN CAMPUS</p> <p>Fellowship of Religious Liberals Sun 8:30 P.M. Room 35-Union</p> <p>Rev. Gerald K. Wyman, Pastor (11-9-1957)</p> <p><b>FIRST PRESBYTERIAN CHURCH</b></p> <p>Ottawa at Chestnut (Fisher Bus Line)</p> <p>Rev. William G. Kuhlen, Minister</p> <p>David S. Feagell, Parish Minister</p> <p>Nile Harper, Minister of Christian Education</p> <p>Two Worship Services</p> <p>10:00 and 11:30</p> <p>Mr. Kuhlen preaching at both services</p>	<p><b>REORGANIZED CHURCH OF JESUS CHRIST OF LATTER-DAY SAINTS</b></p> <p>Branches: 818 Johnson St. Lansing</p> <p>Elder Miller, Pastor</p> <p>Roselake - Upper Rd. Elder Engmark, Pastor</p> <p>Sunday Services</p> <p>10 a.m. Church school</p> <p>11 a.m. Worship Service</p> <p>Nation League - college church group meets every Sunday night at 7:30 p.m. in the Union Lounge</p> <p><b>BETHANY BAPTIST CHURCH</b></p> <p>Affiliated with the Southern Baptist Convention</p> <p>South Pennsylvania at Lincoln</p> <p>Church Phone IV 4-0350</p> <p>Sunday School 9:45 a.m.</p> <p>Training Union 4:35 p.m.</p> <p>Morning Worship 10:35 a.m.</p> <p>Evening Worship 7:30 p.m.</p> <p>If you need a ride to any service of the church, please call Paul Clark, Edgewood 7-6733</p> <p>PAUL CLARK, Pastor</p>	<p><b>PLYMOUTH CONGREGATIONAL CHURCH</b></p> <p>Alliegan at Townsend opposite the Capitol</p> <p>Church School &amp; Sunday Worship at 11 a.m.</p> <p>Ministers:</p> <p>Dr. John W. Claxton</p> <p>Rev. Philip E. Reinken</p> <p>Mr. Richard E. Klauert</p> <p><b>CENTRAL METHODIST CHURCH</b></p> <p>Ottawa at Capital</p> <p>8:45 and 11:45 Services of Worship</p> <p>Sermons</p> <p>Dr. Morrison, Preaching</p> <p>We will provide transportation to our weekend worship service each Sunday. The Wesley Foundation B.S. will pick up students according to the following schedule:</p> <p>10:30 - West Shaw Hall Parking Lot</p> <p>10:35 - Mason, Thurm, Corner</p> <p>10:40 - Wesley House (245 Park Lane)</p> <p>10:50 - Rafter Hall</p> <p>11:10 - Arrival at CENTRAL METHODIST</p> <p>11:30 - Return trip to campus</p>	<p><b>SOUTH BAPTIST CHURCH</b></p> <p>South Washington at Moores River Drive</p> <p>Pastor Howard Suggen</p> <p>Ann'l. Pastor, Clyde E. Taylor</p> <p>First Anniversary Services of Worship in Our New Auditorium</p> <p>10:00 A.M. BIBLE SCHOOL</p> <p>11:00 A.M. "THE WEAPONS OF WAR"</p> <p>1:00 P.M. "A FEAST - A FINGER - A FUNERAL"</p> <p>YOU ARE CORDIALLY INVITED</p> <p>Call IV 2-812 for a ride</p> <p>Free Transportation Leaving Bethel Manor 9:20</p> <p><b>FIRST CHURCH OF THE NAZARENE</b></p> <p>Convene at Butler, Lansing</p> <p>FRED J. HARR, Pastor</p> <p>Sunday School - 9:45 a.m.</p> <p>Youth Groups - 4:00 P.M.</p> <p>Divine Worship - 11:00 a.m.</p> <p>Evangelistic - 7:00 P.M.</p> <p>A CORDIAL INVITATION</p> <p><b>INTER-CITY BIBLE CHURCH</b></p> <p>287 E. MICHIGAN</p> <p>Independent, Fundamental, Pre-Millennial</p> <p>REV. G. J. TINSLEY, PASTOR</p> <p>9:45 a.m. SUNDAY BIBLE SCHOOL</p> <p>11:00 a.m. MORNING WORSHIP SERVICE</p> <p>8:00 p.m. YOUTH GROUPS</p> <p>7:00 p.m. EVENING INSPIRATIONAL SERVICE</p> <p>For Transportation call IV 9-1101</p>	
<p>Visit <b>The University Chapel</b></p>				