

BEAT MARQUETTE
WATCH THE SPARTANS
CLIMB ALL OVER
The Hilltoppers
Victory for MSC

MICHIGAN STATE NEWS

Daily Student Publication of Michigan State College

Weather

Increasing Cloudiness

Vol. 34 334

EAST LANSING, MICHIGAN, SATURDAY, OCTOBER 27, 1945

No. 34

Spartans Face One of Toughest Games

Today's Campus

... 'Phony' Troubles

"Say have you tried to call Abbott lately?" Bill Waterbury, Birmingham freshman, has the right idea. Trying to call Barbara Flues, also Birmingham freshman, but unable to find her home he recently displayed a stroke of genius. He wrote a letter. So to any other man in the same condition—there's a tip: If phoning doesn't get 'er let 'er know by letter.

Adventure Series Speaker to Show Mexican Movies

Robert Friers, tonight's speaker in the world adventure series, will show films "Mexican Holiday" at 8:15 in College auditorium. Dean S. E. Crowe has announced.

Friers began his life of travel at the age of 12 years when he read an atlas while recovering from an operation. Within the next open years he had visited 26 countries.

Well Travelled

Before his twentieth birthday he had been in every state in the United States and had traveled to Mexico. He had seen every Province of Canada and had tramped to Alaska.

While attending University of Michigan in 1939, Friers took on \$3 bet from his roommate that he could hitch-hike around the world on \$82 dollars.

It was because of interruptions such as this that it took seven years to complete his work at U of M. He later did graduate work in Latin American history.

Paddle Pusher

Another time Friers walked, rode burrows, and paddled canoes down jungle streams to get from Central America to Panama canal. He lived on native food at a cost of 11 cents a day.

Another trip he accomplished was a solo motor trip in South America from the Atlantic to Pacific. On this occasion he traveled the entire length of the Simon Bolivar highway with only a two-pound monkey as a companion.

RADIO ROUNDUP

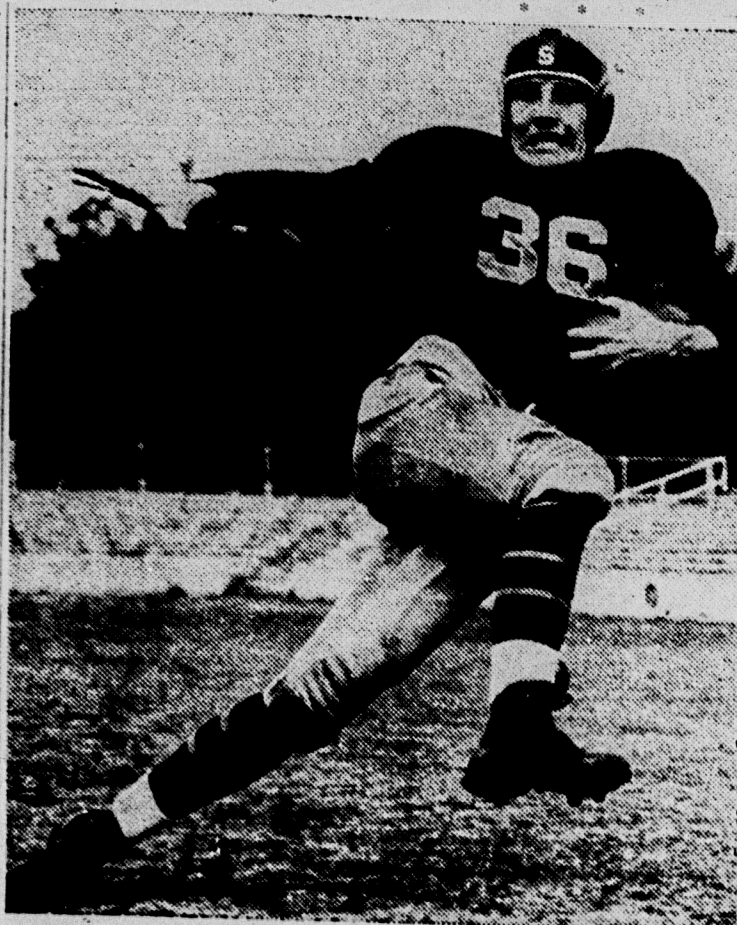
WKAR — 870 kc

THIS MORNING —

- 7:30—Dawn Salute (request roundup)
- 8:00—Early Morning News
- 8:30—Hymns You Love
- 9:00—Melody From the Music Room
- 10:30—Headline Edition

THIS AFTERNOON —

- 1:30—The President of the United States (Navy Day speech)
- 2:00—Michigan State - Marquette football game
- 3:00—Navy Day program
- 4:45—Dance Time and Scores of Major Games
- 6:00—Personalities in the News
- 7:15—Listen to the Band
- 7:45—News Roundup



BRESLIN
... will push with passes ...

Open Houses, Radio Parties Take Halloween and Football Theme

By KATHIE MULL

Heading the long list of social activities planned for tonight is Union board's open informal dance in the Union ballroom from 9 to 12. Dick Snook and his band will provide the melodies and patrons will be Prof. and Mrs. Nathan Hall and Prof. and Mrs. Grover Pratt. Tickets may be obtained at the Union desk.

Mason and Abbott are holding a joint open house from 8 to 12, welcoming all men students on campus, according to Social Chairman Doris Baird, Ionia junior. In addition to some 900 women waiting to dance, there will be bridge, ping pong, and special entertainment features.

Blind Date Bureau

North Campbell's blind date bureau will go into operation tonight for men students on campus seeking dates. Clarine Cardwell, Imlay City junior, will fix up dates between men who wish them and women residents registered on the "blind date" list. Men interested should come to the dorm desk, according to Miss Cardwell.

This afternoon after the game Alpha Chi Omega, Chi Omega, and Canterbury house will hold open house programs from 4 to 6. Sigma Nus and ATO men are invited guests at both Greek chapter houses, according to social chairmen, Sue Averill, Birmingham senior, and Shirley Trump, Franklin Village senior. All students on campus will be welcomed at Canterbury house from 4 to 6 for a coffee, according to Helen Knapp, Rochester, N. Y., junior, of the executive board.

Pi Phi's Play Ghost

Pi Beta Phi women will entertain guests at a Halloween party at the chapter house from 9 to 12, according to Co-chairmen Kay Rogers, Hillsdale sophomore, and Anne Chestnut, Detroit sophomore. Plans include a scavenger hunt, dancing and refreshments. Patrons invited are Mr. and Mrs. E. C. Tabor and Mr. and Mrs. J. P. Newman.

Alpha Omicron Pi women will also entertain their dates at a radio party from 8 to 12 tonight, Shirley Thorpe, Detroit sophomore and social chairman, revealed. Patrons will be Mr. and Mrs. Daniel Sheehan and Mr. and Mrs. See WEEKEND, Page 2

June Szosz Delivers Winning Speech in Extempore Meet

Winners in the college extemporaneous speaking contest for women held last night are: first place, June Szosz, Elgin, Ill., junior, and second place, Wilma Helfrich, Traverse City junior, J. D. Menchhofer of the speech department announced last night.

Miss Szosz spoke on "The Race Riot" and Miss Helfrich talked on "Labor and Race Discrimination." First prize was \$10 and second prize, \$5.

Judges for the contest were B. J. Knittle, Jean Granville, Irene Wade, Clyde Dow and J. D. Menchhofer, all of the speech department.

Miss Szosz will represent Michigan State in the women's division of the Michigan Intercollegiate Speech league to be held at Hillsdale college Friday, Nov. 16.

15 Tickets Issued

Chief Richard Rogers, East Lansing police head, announced that on last Wednesday 15 summonses were issued to Michigan State college students for driving without a permit, failure to display the permit sticker on the windshield or for illegal parking.

Rogers states that the students' excuses for violation have been that they didn't know the regulations were being enforced yet. Rogers emphasized that the regulations are being rigidly enforced.

State, Hilltoppers Will Play With MSC Slightly Favored

When the Spartans take to the field today, with a slight edge over the Marquette eleven, they will be seeking their ninth victory over the Hilltoppers, and their fourth straight win.

Grand Rapids School Band Will Perform

The South high school band of Grand Rapids will be the guest band appearing between halves of the game this afternoon. The 89-piece band is made up of 25 girls and 64 boys. The director, Glenn B. Litton, received his masters degree in music education at Michigan State college.

The Michigan State college band, following its usual procedure, will play from the stands during the game.

State to Hear Paul Robeson

Paul Robeson, one of America's greatest Negro artists, will present a concert in College auditorium Monday, Nov. 5, at 8:15 p.m., according to S. E. Crowe, director of the concert series.

Robeson's bass-baritone voice has thrilled audiences in Paris, Berlin, Vienna, Prague, Budapest, Moscow and Leningrad. He has sung for the royals in London and has given command per-

Students must use their activity books with coupons for admission to the World Adventure series. Coupon D will be used for this evening, Dean S. E. Crowe said last night.

formances at St. James palace before the Prince of Wales and King of Spain.

Specializing in Negro spirituals and American ballads, Robeson introduced "Ballad for Americans" to the public. It immediately became a success. The two are directly associated with each other.

Tickets for the concert will be on sale Monday morning in the administration building.

News in Brief

WASHINGTON, Oct. 26 (AP) — President Truman will deliver his "most important" speech on foreign policy at New York tomorrow. The White House gave the address that description today and set off speculation that he may make a bid for American leadership in carrying peace organization even beyond the stage of international cooperation provided for in the United Nations.

TOYKO, Oct. 26 (AP) — The Japanese today questioned the propriety of allied orders to disband their diplomatic network abroad, while Gen. MacArthur's headquarters expressed ignorance of the prospective arrival of British and other troops to share in the occupation of this conquered country.

DETROIT, Oct. 26 (AP)—Walter P. Reuther, vice-president of the CIO Automobile Workers' union, asserted today that the union will not compromise its demand for a 30 per cent wage increase from General Motors Corp. unless the management can show it is unable to pay the increase.

With both teams rated on almost an equal footing, all indications point to an exciting afternoon with plenty of passing, running, and good football. State has gained the edge because of the injuries sustained by the Marquette team in the recent scoring bee with the Great Lakes eleven.

Today's game will be the fifteenth in the series between the two schools, and of them State has finished on top in eight. There have been no ties in the series. When the two teams last met in 1942, Marquette romped over the Spartans to the tune of 28 to 7, and it was the worst defeat for Charlie Bachman in 12 years of coaching at State until the 40 to 0 trouncing by Michigan.

State "Sour"

Coach Bachman said that the strain of mid-term exams had made the team "sour." With the team in nearly perfect physical condition, Bachman hopes that the rest from yesterday's practice will make them "right" for the game.

Virtually the same tears that started against the Pittsburgh team will answer the whistle today against Marquette. Glen Johnson has replaced Dominic Conti at the signal calling slot. The power of the backfield has been boosted with the return of Bob Ludwig, passing star who was injured in the Michigan game.

All indications lead to the fact that the clash will be marked by concentrated aerial attacks. State is depending upon Russ Reader, and fullback Jack Breslin to do the chucking.

Breslin Leading Punter

Reader leads the Spartan passers, completing 17 out of 26 attempts. Breslin has been doing most of the punting and has an average of 42.8 yards in four games to place second in the nation.

The added weight of 250-pound Bill Pagel has given the Green and White a six pound edge over the Marquette eleven. However, the Hilltoppers have the other six pounds concentrated in the backfield where they edge the Spartans. See SPARTANS, Page 3

TIME TABLE

TODAY —

- State vs. Marquette, 2 p.m. Macklin field
- Halloween party, 8 p.m. Peoples church
- Union dance, 9 p.m. Union ballroom

TOMORROW —

- Spartan Christian Fellowship 4 p.m., 435 M.A.C.
- Lutheran Gamma Delta 6:30 p.m., Union sun porch
- Lutheran Student club, 7:30 p.m.
- Faculty dining room, Union

MONDAY —

- Staff Stag, 8 p.m.
- Union club rooms
- Union board, 5 p.m.
- Union office

MICHIGAN STATE NEWS

Entered as second-class matter under act of March 1879 at the post-office, East Lansing, Mich. Offices located on ground floor of east wing of Union Building Annex, room 2.

Published daily except Sunday and Monday mornings during the regular school year and Thursday mornings during summer session by the students of Michigan State college.

Telephone - College Phone 8-1911
Editorial Office - Ext. 269; Business Office - Ext. 268.
Subscription rates—5c per copy; \$3.50 per year by mail; \$2.25 per year by college carrier to students; \$3.00 per year by college carrier to non-students.

MEMBER OF THE ASSOCIATED PRESS
The Associated Press is exclusively entitled to the use for republication of all news dispatches credited to it or not otherwise credited in this paper and also the local news published therein. All rights of publication on special dispatches herein are also reserved.

EDITORIAL STAFF
Faculty Adviser - A. A. APPLEGATE
Manager - JAN HOPPS
Editor - MARION HECKEL
Advertising Manager - LEONE SEASTROM
Night Editor - BARBARA JONES

BUSINESS STAFF
Circulation Manager - JANE WALKER, Contracts Manager - DOTTIE LAMONT, Assistant Advertising Manager - DAWN HALL.

INFORMATION

LUTHERAN GAMMA DELTA

All synodical conference Lutherans are invited to attend a general meeting on Sunday at 6:30 p.m. on the Union sun porch. Founders' day will be celebrated with Rev. Woldt as the speaker of the evening.

HALLOWEEN PARTY

Saturday night from 8 until 11:30 Student club will have its annual Halloween party in the social hall and gym of Peoples church. Regular Halloween features will be given, according to Darrell Cook, chairman of the party. All members are invited to bring along their friends to this party.

STAG STAFF PARTY

A stag party for all old and new male members of the Michigan State college will be held from 8 to 10:30 Monday evening in the College club rooms in the Union building, Dr. C. W. Millard, chairman of the social committee, announced.

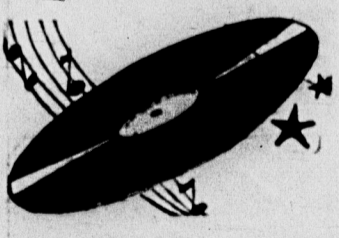
JAPAN MISSIONARY

Spartan Christian fellowship will meet tomorrow afternoon at 4 in Bethel manor, 435 M.A.C., with Miss Irene Webster Smith, returned missionary from Japan, as guest speaker.

TOWN GIRLS

The executive board of Town Girls will hold a meeting Monday at 5 p.m. in organization room 2 of the Union building, according to Martha Driver, Lansing junior.

Records! Records!
Records!



Rundle's

RADIO SERVICE
327 N. WASHINGTON
Visit Our Radio Supply Department
See Our Album Selections

Home Ecs Offered Vocational Guidance

The home economics department will hold a series of three meetings, Nov. 1, 8, and 15, in room 101, home economics building, from 7:15 to 8:15 p.m., for students who have not yet declared their home economics major. Prof. Jeanette Lee announced yesterday.

WEEKEND

(Continued from Page 1)
Mrs. Bernard Knittel. Kappas Entertain

Another radio party will go on at the Kappa Kappa Gamma chapter house, according to Jayne Meier, Detroit senior. The event will be from 9 to 12 and Mr. and Mrs. B. B. Roseboom and Mr. and Mrs. John Pingle will be patrons.

Sigma Nus have scheduled a radio party from 8 to 12 at the chapter house tonight, according to Doug Fritz, Detroit sophomore, social chairman. Patrons will be Prof. and Mrs. Charles McCaffrey and Mr. and Mrs. Scott.

Bue jeans and plaid shirts will be much in evidence at the Halloween party planned by the Sigma Chi at the chapter house tonight from 9 to 12, according to Bob Dodge, Detroit freshman and social chairman. Patrons named are Mr. and Mrs. Stuart Gallacher and Mr. and Mrs. Bernard Kuhn.

"Mystery Mixer" is the theme of the Hillel foundation party at the Sharrey Zedek in Lansing tonight from 8:15 to 12, according to Ralph Pliskin, social chairman.

A mixer party will also be enjoyed by members of the Spartan Christian fellowship from 6 to 12 tonight, according to Lillian Donaldson, Detroit sophomore, social chairman.

STATE EAST LANSING
STARTING SUNDAY
ANCHORS AWEIGH
STARRING
GENE KELLY & FRANK SINATRA
NEWSREEL - COMICS - SELECTED SHORTS
1:00 P. M. to 11:00 P. M.

CAMPUS CHURCHES

By CAROLYN KARNEY

COLLEGE LUTHERAN
Services are held in the East Lansing State theater. William Young pastor, will have as his sermon topic for the 10:30 a.m. service "What Is A Lutheran Christian?"

Lutheran Student club will meet in the faculty dining room of the Union at 7:30 p.m.

PEOPLES CHURCH
"How To Keep On Top" is the sermon topic of Dr. N. A. McCune tomorrow at the 9:30 and 11 a.m. services of Peoples church.

The student vesper service will be conducted by M. Earle McCullough, director of the men students of the church and secretary of the YMCA. His topic will be "Love, Love—The Law of Life."

At 7 p.m. a movie will be shown to the student fireside group. The name of the film is "Who Is My Neighbor?" a parable to the story of the Good Samaritan.

CHAPEL OF CHRIST
Holy Communion is administered in the Canterbury house at 8 and 10 a.m. by Rev. George Selway.

Canterbury club will meet at 6:30 p.m. when Dr. Thomas Osgood, head of the physics department of MSC, will speak on "Some Aspects of Our Physical World."

UNITY CENTER
Roxie Miller, minister, will have as her sermon topic tomorrow morning "Putting First Things First." The service will begin at 11 a.m. Sunday school is also at that time.

NAZARENE
Rev. C. A. Bruch, pastor of the Mifflin avenue church, will speak of the topic "Touching the Hem of His Garment" tomorrow morning at 11.

ST. THOMAS AQUINAS
"Christ the King" will be the sermon topic for Sunday mass. Mass will be held at 8, 10, and 12 a.m. tomorrow. Confessions are heard Saturday at 4 to 4:30 and 7:30 to 9 p.m.

FIRST CHURCH OF CHRIST
"Probation After Death" will be the sermon tomorrow at 11 a.m. Sunday school will meet at 9:30 a.m. and services will also be Wednesday at 8 p.m.

CENTRAL METHODIST
Dr. D. Stanley Coors, pastor, will speak on "Radiant Hope of Life's Dark Hours" tomorrow morning at the 11 service. The evening service is held at 6.

FIRST PRESBYTERIAN
Rev. Vander Meulen will be in the pulpit tomorrow morning at 11. His lesson will be taken from Romans 12 and the sermon will be "Does First Presbyterian Church Need A New Minister?"

Rev. Vander Meulen will speak to the young people at 7 p.m. of the topic "God, Fate, Myself: Which Rules My Life?"

ST. MARY'S CATHEDRAL
"Christ Our King" will be the sermon at the mass tomorrow. Masses are held at 6, 7, 8:30, 10, and 11:10 a.m. and 12:40 p.m.

CHRIST LUTHERAN
Christ Lutheran church, Lansing, will observe the fifteenth anniversary of the congregation in a special service of thanksgiving at 10:45 a.m. In this service the mortgage will be burned. The Rev. E. L. Schwan of Grand Rapids will be the guest

Grin and Bear It . . . By Lichty



And while the atomic bomb formula is before the Senate—there's 3 or 4 amendments I'd like to add to it!

Weekly Letter to Men in the Service

Oct. 27, 1945
DEAREST Johnny:
Well, guess I'd better beat my brains and produce another letter. And I'd really better beat it because my class in teaching of English is luring me slowly.
The Coed Carnival was quite a success, with Jack Breslin giving away kisses—I fought my way up to the front of the line to find out that they were candy. It's been a long time since I've had any. Candy.
We're playing Marquette this afternoon and I hope it's a very exciting game. With the weather tingeing on the polar side, I'll need something to keep me warm. By the way, you should have seen the Jackson Midget teams play during the half last week. They were as good as the big boys.
Haven't heard much more on the car ban. There is a student committee which is supposed to be doing something about it. So I'll let you know as soon as the decks are cleared for action.
The Hour of Charm was charming as was the Korjus, Moscona concert. And next on the list is Paul Robeson. Hope I can get a ticket for it. They seem to be as scarce as nylons. At least, the good seats are always gone by the time I get over there.
Newest figures on the Servicemen's institute are 650. So why don't you make it 651? Got a letter from one of your old buddies, Jimmy Clark, and he's in Biarritz doing a little studying. Also he mentioned that the scenery is lovely. And I'm sure he didn't mean the dancscape. If you have time why don't you drop down and see him?
Had a little party-party the other night with the Snews gang. Occasion was the tubbing of Janice Rae and we really got her wet. But she and her SAE pin survived the damage and we drowned our happiness in ice cream and cake. (Just to let you know I haven't forgotten how they treated me when you gave me your DZV button.)
All for now, Big Boy,
Love,
DEE

Church Directory

PEOPLES CHURCH
Interdenominational
WORSHIP SERVICES
9:30 and 11:00
Subject:
"HOW TO KEEP ON TOP"
N. A. McCUNE
Student Program — 5:00
Vesper Hour — 6:15

ST. THOMAS AQUINAS CATHOLIC CHURCH
405 ABBOTT ROAD
Sunday Masses — 8, 10, 12
Holy Days of Obligation Masses 7, 8, 12
Weekday Masses — 7 and 8 a.m.
Confessions — Saturday 4 to 5:30 p.m. and 7:30 to 9 p.m.
Daily Rosary Novena for Students 5:15 p.m.
FR. J. V. MacEACHIN, Pastor
FR. MICHAEL MLEKO, Asst.
Phone 8-3736

FIRST CHURCH OF CHRIST SCIENTIST
East Lansing — Masonic Temple
314 MAC Avenue
Sunday Service — 11 a.m.
"PROBATION AFTER DEATH"
Sunday School — 9:30 a.m.
Wednesday Service — 8 p.m.
Reading Room and Lending Library — 211 Abbott Bldg.

CHRIST LUTHERAN CHURCH
122 So. Penn. at 100 E. Mich.
Celebrating
15th Anniversary
with Burning of Mortgage
10:45 Service
Rev. E. L. Schwan, Guest Preacher
GAMMA DELTA
Sunday at 6:30
Sun Porch, Union

SPARTAN (Continued from page 1)
Marquette's aerial...
Hickey, Lodde...
passing and...
Minski and Orlando...
most of the catch...
Spartans. One...
has been announce...
pper's line-up: ...
ay get the startin...
stens at right tack...
surprise plays ...
Because State ...
assing and ru...
ainst the Wayne ...
Spartans have a v...
icks to pull on th...
even, but Bachma...
win they would ...
at in front at the s...
ere."
Bachman's conce...
arquette attack is...
8 points that the...
ve registered in o...
starts, while ...
ne their opponents...
ly 110. The one b...
Marquette team ...
to 13 decision thi...
d to the now fan...
um.
probable Starting I...
State — Pos.
L.E.
L.T.
L.G.
C.
L.G.
R.T.
Q.B.
L.H.
R.H.
F.B.

— THE WOMEN'S V...
By HELEN G...

FRESHMAN ORIENT...
All women who a...
entation' leaders...
the Spartan rool...
Monday at 5 p.m...
co-chairman Virgi...
irmingham senior...
AND N MAJORS
The F and N majo...
group meeting M...
in room 101 of th...
ames building'...
ar officers and...
es to student-facu...
will take place at

CLASSIFIED

LOST
BETWEEN Mayo an...
ve bracelet made of...
Return to Mary...
GMA Chi Gamma p...
ary. Call Jean Ro...
ames.

GOLD Identification...
ed Gertrude Schroe...
Ext. 82

LEXIGLASS brace...
Call in center. Call

LAN'S yellow gold...
en in men's room...
18 valued for pers...
please contact St...
ard.

ZEEN Shafter Inst...
m 206 Hart building...
ward.

HELP WANTED
JOY to work around...
Friday. Call Mrs. Lay...
ward.

FREE Ag or forestry...
Gen. work. Call evenin...
Centerlawn. Tel. 8-11

FOR SALE OR EXC...
model Graflex ca...
28 m.m. camera. C...
12 before 10 a.m.

model Graflex ca...
camera. Call La...
10 a.m.

PERSONAL
DON'T have time to...
body want to buy...
waste. Call Marjoe, H...
State News.

IT PAYS TO ADV...
The person who turn...
to the Union desk...
ave a reward and...
clude Barbara Jone

SPARTANS

(Continued from Page 1)
 Spartans 195 to 189.
 Marquette's aerial attack will be taken on to Bob Lodde and Bill Hickey. Lodde does most of the passing and ends Carl Kaminski and Orlando Palesse will be most of the catching to worry the Spartans. One major change has been announced in the Hilltoppers line-up: Les Kalchik may get the starting nod for Ed Mastens at right tackle.

Surprise Plays
 Because State used only a few passing and running plays against the Wayne Tartars, the Spartans have a whole bag of tricks to pull on the Marquette team. But Bachman stated that even if they would "have to get in front at the start and stay there."

Bachman's concern with the Marquette attack is vested in the 8 points that the Hilltoppers registered in one victory in the starts, while at the same time their opponents have tallied 110. The one bright spot in the Marquette team's past is the 13 decision that they dropped to the now famous Purdue team.

Probable Starting Line-ups:

State	Pos.	Marquette
Quarterback	L.E.	Kaminski
Running back	L.T.	Romeo
Fullback	L.G.	Crowley
Halfback	C.	Kwilosz
Linebacker	L.G.	Dams
Defensive back	R.T.	Kalchik
End	R.E.	Palesse
Tackle	Q.B.	Lodde
Guard	L.H.	Rudan
Center	R.H.	Copoulos
Kicker	F.B.	Teik

— THE — WOMEN'S WORLD

By HELEN GOVER

FRESHMAN ORIENTATION
 All women who are freshman orientation leaders are to meet in the Spartan room of the Union Monday at 5 p.m., according to co-chairman Virginia Fellows, Birmingham senior.

MAJORS
 The F and N majors will hold group meeting Monday at 5 p.m. in room 101 of the home economics building. Election of officers and representatives to student-faculty committee will take place at that time.

CLASSIFIED ADS

LOST
 BETWEEN Mayo and Dem hall, lost bracelet made of Guatemalan wood. Return to Mary Linker, West 34

CHI GAMMA Chi Gamma pin (chemistry library). Call Jean Robinson, South 35

GOLD identification bracelet, engraved Gertrude Schroeder on back. Ext. 82 35

LEXIGLASS bracelet with gold in center. Call Phyl, Ext. 317. 34

MAN'S yellow gold Elgin wrist watch in men's room at Kewpees, \$14, valued for personal reasons. For please contact State News. Re- 35

GREEN Shaffer lifetime pen in room 206 Hort building. Call 8-3195. 34

HELP WANTED
 BOY to work around yard anytime weekdays. Call Mrs. Laycock, 8-3088.

THREE Ag or forestry students for Gen work. Call evenings Mr. Fyan Centerlawn. Tel. 8-1137. 34

FOR SALE OR EXCHANGE
 Model Graflex camera, \$80, or 35 mm. camera. Call Lansing, 33 before 10 a.m.

PERSONAL
 DON'T have time to ride it—does body want to buy my bike? Wash paint job, and it's just going waste. Call Marion Heckel, 8-3555, State News.

IT PAYS TO ADVERTISE
 The person who turned my wallet to the Union desk will call me, 97 or State News, he or she will have a reward and my eternal gratitude. Barbara Jones.

Center, Guards Will Hold Back Hilltoppers



... STEWART ...



... BLACK ...



... LAMSSIES ...

Pictured here are three Spartan athletes, right guard DON BLACK, left guard BOB LAMSSIES, and center DON STEW-

ART, who will figure heavily today in the clash between State and Marquette university.

SPARTAN PLAYERS —

Flying 'Z' Formation Relies Largely On Guards Don Black, Bob Lamssies

By ART ROSS

The successful flying "Z" formation employed by Coach Charlie Bachman depends to a large extent upon the ability of the two guards to operate well at their respective positions. Consequently a pair of fellows named Don Black and Bob Lamssies, de-

serve a great deal of credit for their performances so far this season. Don Black is a husky 18-year-old freshman, standing 5' 10" and weighing 190 pounds. Don was in the starting line-up for State in the Michigan game, and although he was slightly injured in that contest, he has started every game since that time. A steady charger and accurate tackler, he has consistently displayed his powers in the games to date.

Played Against Contos
 While playing guard for Libbey high school team in Toledo, he earned two letters at that spot. Among the opponents that he played against was Waite high school. This Waite squad included right halfback Steve Contos, and center Don Stewart, now both are teammates of Black. Don is an engineering student and has a bright future in football at MSC before him.

The other regular guard is 185-pound Bob Lamssies, a 19-year-old sophomore from South Haven. Bob earned a varsity letter at guard for State last year, but it wasn't until this year that he really came into his own as a mainstay of the Spartan line. All

season long his work has been outstanding, and for this reason he has started and played the majority of the four games already finished.

Started Against Michigan
 For instance, in the Michigan contest, it was the consensus of opinion among the observers that Bob was one of the best linemen on the field.

A modest fellow in addition to being a good student, he has two years of college football remaining before he graduates.

State Faces Tough Team

By JOHN HAAS

When the Spartans face Marquette this afternoon it will be their first real test of strength since they were defeated by U. of M. in the opener. However, State is now at its peak and is expected to give the Hilltoppers a run for their money.

The Spartans have been reinforced by the return of veterans Ludwig, Contos, and Massich to the line-up. All three missed the Wayne game because of injuries.

State must play a better brand of ball than they have shown at any time this season in order to conquer the Hilltoppers.

Marquette on the other hand has been weakened by three tough games, Purdue, Wisconsin, and Great Lakes. The Hilltoppers were defeated in a close contest, 13 to 14 by Purdue. In their second game they were snowed under by Wisconsin, 40 to 13, and last week Great Lakes overpowered them 37 to 27.

In their only victory of the year Marquette trounced Kansas State, 55 to 13. However, the Hilltoppers have shown spots of brilliancy especially in the Purdue and Kansas State games.

The two teams will line up unevenly, State's line outweighing Marquette's 194 to 191. Marquette, however, has a heavier backfield, 195 as compared to the Spartans' 179.

Marquette holds the edge in the passing and running departments while State has the advantage in kicking.

All in all this should be by far the best game the Spartans have played this year.

Wolverine Pix

Following pictures will be taken in the Little Theater of the home ec building promptly as scheduled. Women will wear heels and dark suits with white convertible collars. Men will wear suits and ties.

MONDAY

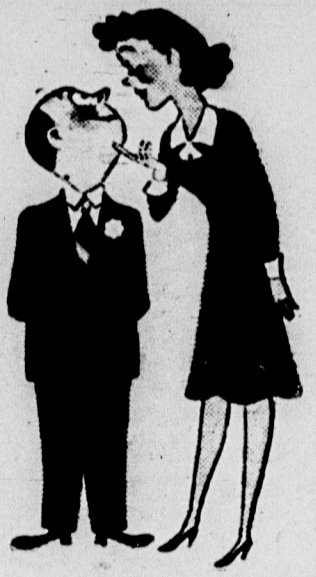
- 5:10—Home Ec club board
- 5:20—Town Girls board
- 7:00—PanHellenic
- 7:15—Alpha Chi Omega
- 7:30—State News
- 7:45—Alpha Omicron Pi
- 8:00—Alpha Phi
- 8:15—Alpha Xi Delta
- 8:30—Chi Omega
- 8:45—Pi Kappa Delta
- 9:00—Delta Zeta
- 9:15—Gamma Phi Beta
- 9:30—Kappa Alpha Theta
- 9:45—Interfraternity council
- 10:00—Alpha Tau Omega
- 10:15—Lambda Chi Alpha
- 10:30—Phi Delta Theta

SUPPORT
 VICTORY LOAN
 OCT. 29-DEC. 8
 BY BUYING
 BONDS



One Good Reason For Keeping Your Chin Up

If you're wearing a Hurd's tie —
 a good reason for keeping your chin up



HURD'S ties are good to look at (and wonderful to wear!) because the patterns are distinctive, the fabrics are rich and a special lining helps make a perfect knot every time. Come in and see our new fall and winter selection of ties.



THE FAMOUS GRILL



TRY OUR
SIZZLING STEAKS
 539 E. MICH. AVE.
 TEL. 5-7516

HURD'S
 LANSING AND EAST LANSING
 YOU CAN'T LEAVE UNSATISFIED

STORE HOURS SATURDAY . . . 10 to 6



MISS ELEANORE ALLEN PERFUME STYLIST WILL BE AT JACOBSON'S
 ALL DAY SATURDAY TO OFFER A NEW PERSONALIZED PERFUME SERVICE

Jacobson's -

EAST LANSING

IZOD OF LONDON

(Exclusive with us)

TAILORS A TRADITIONAL TWEED

AS SOUND AS THE
 BANK OF ENGLAND AND
 A PERFECT EXAMPLE
 OF IZOD TAILORING. IT'S
 A SUIT ANY MAN WOULD
 RAVE ABOUT FROM
 FABRIC TO FINISH.
 IZOD HAS GIVEN IT A
 CUSTOM TAILORED LOOK.

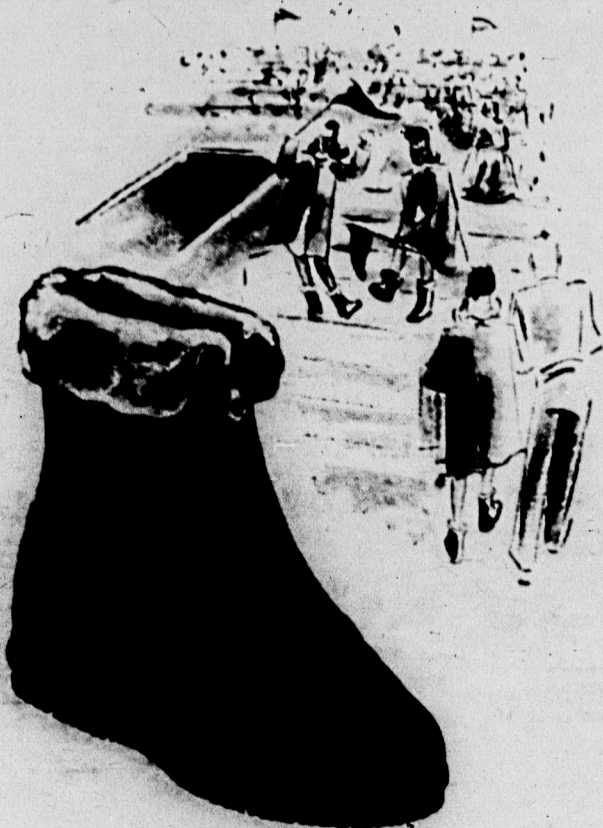
THE SUIT 49.95
 THE COAT 55.00

WE ALSO
 FEATURE
 DRESSES . . .
 BLOUSES . . .
 SLACKS . . .
 BY IZOD OF
 LONDON



THE ONE AND ONLY GENUINE

STADIUM BOOTS

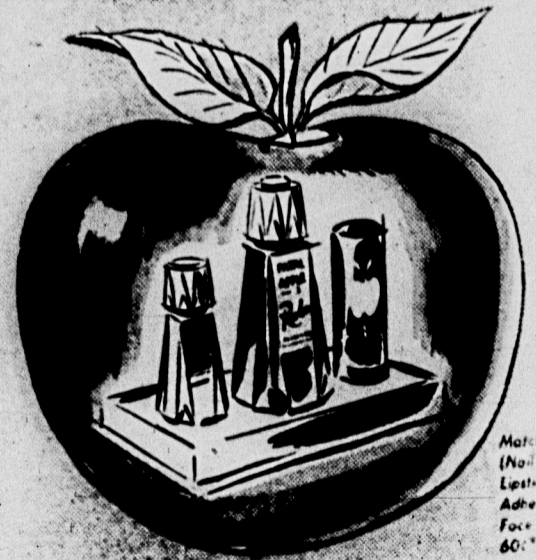


INSPIRED BY
 AMERICAN
 AVIATORS

JUST THE
 THING FOR
 THE GAME
 TODAY . . .
 YOUR FEET
 WILL KEEP
 WARM IN
 40 BELOW
 WEATHER
 OR YOUR
 MONEY REFUNDED.

8.95

NEW I-dare-you Red . . .



Match Box
 (Nail Enamel
 Lipstick
 Adheres) 17
 Face Powder
 60¢ and 1.00
 *Plus Tax

Revlon's
"Fatal Apple"

Not since Eve winked at Adam
 has there been such a tempting color for
 Eyes everywhere in nail enamel,
 lipstick and in face powder, too. And
 its staying power . . . phenomenal!

MI
 Vol. 34 334
 Fourto
 Behind
 Falling F
 For S
 Man
 Cecil H. N
 charge of set
 been doing th
 The set fo
 grey-green w
 ing ceiling. I
 pounced. Con
 set itself wil
 ularly hard, bu
 come up. In
 pictures, curtai
 posed to fall fr
 the floor. Each
 ture will requir
 vice to make it
 ed out.
 Construction Cr
 Students work
 tion are: Ma
 Dundee senior, C
 Cogan, East
 Yvonne Pessel,
 Billie Green,
 Joyce Holly, La
 Kitty Wozniak,
 more; Bette W
 freshman; Lo
 Grand Rapids
 See PLA
 Toda
 Camp
 . . . Easel D
 The artists be
 who were sketch
 the Union yester
 Campbell, Detro
 Jeanne was sket
 who were sketchi
 is there a gran
 house?
 . . . Nose Fo
 The reason why
 ar four-year-old
 m of her dadd
 and loudly and sa
 see at the top of
 erday morning
 East Lansing pos
 ically disclosed
 "My dad
 work."
 abbed won't con
 have a na
 and a bewildered
 g out a first as
 nce reporters a
 get the news be
 what is it—the do
 "Missus Hardy?"
 RADIO RO
 WKAR —
 THIS MORNING —
 7:30—Dawn Salu
 8:00—Early Morn
 9:30—Hymns You
 10:45—Instruments
 11:30—Headline E
 THIS AFTERNOON
 2:15—The Novel
 3:00—Songs and
 4:30—Columba
 Symphony
 New York I
 6:00—Blueprints
 gineers (dra
 7:15—Yesterday's
 7:45—News of the