

# MICHIGAN STATE NEWS

Daily Student Publication of Michigan State College

Vol. 33 334 EAST LANSING, MICHIGAN, SATURDAY, MAY 19, 1945 No. 149

## MSC Choir to Sing 'Elijah' Tomorrow

### Student Voices To Be Directed By Dr. Kimmel

By PEG HUMPHREY

Under the direction of Dr. William B. Kimmel, associate professor of music, the 75-voice MSC choir will present part one of Felix Mendelssohn's "Elijah" at 7:30 p.m. tomorrow in Peoples church. "Elijah" ranks with Handel's "Messiah" in being one of the most beloved oratorios in America. Dramatic in content, it is performed with costumes and an opera.

Part one of the oratorio depicts four episodes in the life of the prophetic Elijah. In the first scene Elijah causes the death of a drought to fall on the Hebrew people for having forgotten the true God.

#### Heath Restores Faith

An angel appears in the second scene, ordering the prophet on a journey to Zarephath to find a widow. Considered a wicked man, the widow fears Elijah will come to reprimand her for her sins. Elijah calls upon God to restore life to her dying son, again so doing renews her faith in God.

In a contest to determine the true God, an altar was erected upon which an offering was placed. The god who consumed the offering with fire was to be proclaimed the true God.

#### God of Baal Fails

First the followers of Baal called upon their pagan god, but he didn't respond. But when Elijah called upon Jehovah the offering was destroyed. So Jehovah was recognized by the Baalites as their God.

In the fourth episode Elijah calls to God to end the horrible drought. See 'ELIJAH', Page 2



WILLIAM KIMMEL . . . director . . .

## Metzig, Rudesill, Peterson Given Science Awards

Three students of the bacteriology and veterinary medicine departments were named winners of twenty-five dollar awards yesterday, according to Dr. Ward Giltner, dean of the school of veterinary medicine.

Quentin Metzig, Fremont, Wisconsin, senior, received two awards; the Michigan State Veterinary Medical Association prize, an annual award for top scholarship, and the Rommy Steensma award, presented by veterinary medicine students in honor of Rommy Steensma who was killed in the fighting of Java.

Laura Peterson, South Haven senior, was awarded the Sayer prize for her work in bacteriology, and to Robert Rudesill, East Lansing sophomore, went the Veterinary faculty prize awarded to the student making the best freshman grades.

Play Day, scheduled for today, has been cancelled, according to Frances Ernsberger, Lansing junior.

## Fuehrer's Secretary Tells of Conditions

PARIS, May 18 (AP)—Adolf Hitler made a final desperate effort to split the Allies by planting a story that the Russians were arming 200,000 Germans to fight England, the Fuehrer's former secretary, now a prisoner in southern Germany, told American newsmen yesterday.

Although the plot fizzled, the secretary said Hitler, as well as Joseph Goebbels remained confident almost to the end that Russian and the western allies would fall out in time to save Germany from defeat.

## U. S. Advances Move Slowly; Jap Lines Hold

### Sixth Division Marines, 77th Infantry Battle Fiercely for Two Hills

GUAM, May 19 (AP)—American troops ground out small local gains on the southern Okinawa front yesterday in some of the island's most intense fighting but failed to capture either of their prime objectives, Naha or Shuri cities.

So stubbornly savage was the Japanese resistance that the sixth division marines near Naha and the veteran 77th infantry division were forced to capture two small hills twice before apparently securing them.

G company, 383rd regiment of the 96th division, engaged in an hour-long grenade duel with Japanese in another instance.

Fleet Adm. Chester W. Nimitz in today's communique said the enemy's lines were being defended with the "greatest tenacity of the entire operation" as the 10th army smashed at the strongly fortified "little Siegfried line" stretching across Okinawa from Naha on the west coast to Yonabaru on the east.

He estimated that Maj. Gen. Lemuel C. Shepherd, Jr.'s sixth division leathernecks destroyed two battalions of fiercely defending and counterattacking Nipponese troops in their advance from the Asa to the Asato river guarding Naha.

This advance represented about one mile and required nearly a week, so bitterly did the Japanese fight back. The See GUAM, Page 4

## Second Year Coeds To Draw Numbers, Select New Rooms

Drawing for rooms for sophomore women will begin Monday and continue through Wednesday, for all coeds planning to change their residence next fall, according to Elizabeth Corbush-Spicy, housing director for women.

From 8 a.m. until 5 p.m. Monday, sophomores can draw numbers, ranging from 240 to 425. Numbers 200 to 274 will choose their rooms that same evening, beginning at 7.

Tuesday, at the same time, students with numbers 275 to 350 will be able to choose their rooms, and on Wednesday the remaining coeds will select their rooms, starting at 6:30 p.m.

Freshmen women will follow a similar time procedure, which will be announced later.

## 'Masque of Red Death' Will Be Given Tonight

### Orchesis Members Will Enact Poe Story In Ballet Pantomime, Presenting Original Dances to Music of MSC Orchestra

By JEANETTE NIXON

Orchesis, with the cooperation of the art and music departments will present a ballet pantomime of Edgar Allan Poe's "Masque of the Red Death" tonight at 8:15 in College auditorium.

Dr. Owen Reed, of the music department, composed and adapted the ballet music to fit the changing moods of Poe's story. Dr. Reed completed the score in 1936 as a partial requirement for his master of music degree with a major in composition.



H. O. REED . . . composer . . .

Taking all their cues for action directly from the dramatic musical themes, members of Orchesis and the art department will enact Poe's story. The symphony orchestra, under the direction of Alexander Schuster, of the music department, will play Dr. Reed's score while the pantomime is being portrayed.

Leon Puell, of the speech department, will precede the presentation with an explanation of the story's plot and tempo. The "Masque of the Red Death" is based on 16th century society during the time for a great plague. Death is symbolized as walking over the land. Despite several attempts by the people to kill Death, the people are overcome and a violent, deathly finale ensues.

#### Acting Cast

Dramatic students in the cast are: Prince Prospero, Bob Lodge, Detroit freshman; Red Death, John Swank, Eaton Rapids freshman; Court Fool, Loris Guth, Ovid junior; Herolds, Margery Simpson, Grand Rapids junior, and Jayne Meier, Detroit junior, and Guards, Dave Andrews, Detroit freshman and Don Perry, Detroit sophomore.

Providing atmosphere for the castle scenes will be a group of court guests. They include sophomore Mary Babcock, Detroit, and Zoe Mason, Saginaw; freshmen Ruth Carrier, New Baltimore; Jeanette Kuroly, Wyandotte, and Shirley Marzian, Grand Ledge.

Other guests are freshmen Barbara Greenhoe, Lansing, and Barbara Iverson, Lake City; Elizabeth Schardt, Detroit sophomore, and Dee Dearing, Postac junior.

Under the direction of Miss Ann Kuehl, of the physical education department, Orchesis See 'RED DEATH', Page 2

## Concert Star To Appear

Bidu Sayao, Brazilian coloratura soprano, will appear Wednesday evening at College auditorium in the last number of the current lecture-concert series, S. E. Crowe, dean of students, announced yesterday.

Originally to appear with Richard Crooks in a joint recital on November 15, Miss Sayao's appearance had to be postponed until May 9 because of Crooks' illness.

Nino Martini was next scheduled to appear with Miss Sayao when Richard Crooks cancelled all concert engagements for the year. Shortly before the engagement in May Miss Sayao was stricken ill and the recital was again postponed. Martini will not be able to appear Wednesday because of previous engagements.

## Shortage of Men and Materials Does Not Daunt B & G 'Spartans'

By WALT CAMPBELL

Under wartime restrictions, the maintenance of State's buildings and grounds has become increasingly difficult, due primarily to a shortage of manpower and of irreplaceable mechanical parts.

Since the beginning of the school year the maintenance of buildings and grounds has been separated into two departments under Edward Kinney and Arthur G. Clark, respectively.

#### Extensive Department

The buildings and utilities department includes carpenters, plumbers, electricians, janitors, heat, light, power, elevators, paint and repair shops, and the college telephone system.

Shoveling snow, raking leaves and cutting grass is principally the work of the maintenance of grounds department.

#### Students Help

The largest cut in manpower has occurred with the cleaners and janitors unit, which is approximately 75 percent understaffed, according to Clark. Thirty high school students have helped supplement this loss, however, there is need for eighty more persons in the cleaning and janitor crews.

#### All-night Workers

During last winter utilities men had to assist the grounds department in clearing the walks of snow. There are men from 70 to 75 years old working in this department. In the spring 12 to 15 coeds are added to the crew.

After a heavy snowfall, it was necessary to shovel off the college walks and roads from 3:30 a.m. until noon. In the afternoon the short walks and steps were cleaned and, if another snow fell, the men shoveled through the following night. They were aided by two sweeper tractors and a snowplow truck.

Under these adverse conditions of shortages in help and parts, the building and utilities department and the grounds department have done a big job in servicing Michigan State and in keeping up the tradition of its beautiful campus.

## TIME TABLE

### TODAY—

Hillel dance, 8:30 p.m.  
Shaarey Zedek synagogue  
Mason Hall dance, 9 p.m.  
Ballroom, Union

### SUNDAY—

Hillel meeting, 7:30 p.m.  
Spartan room, Union

### MONDAY—

Big Sister council, 5 p.m.  
Org. room 2, Union  
Interfaith council, 8 p.m.  
107 Union annex

## Today's Campus

### My Sun, My Sun

The gent with the shining countenance who beamed all over the campus yesterday afternoon was Old Sol, who, to newcomers on the campus, may remark an introduction. At the time of his last personal appearance here some time last ago, he was commonly called Sunshine. Many students have reported to the Health Service, professing hallucinations, some were seen to shout hysterically or to beat heads against walls and a few—so used to being spattered by rain—have resorted to spraying themselves with frequent intervals with buckets of water.

## Music Student to Present Senior Recital

Ted Hart, Vassar music major, will appear in his senior recital Tuesday evening at in the music auditorium. A baritone, he is a pupil of Fred Patton, professor of music.

Hart graduated from State in '42 with a degree in English. Having taught high school English for two years he will complete his bachelor's music requirements with this year's work.

A popular singer, he will sing the lead role in "Elijah" when it is presented tomorrow night by the MSC choir. Hart appears over the radio each Tuesday at 4

p.m. on the "Songs for Everybody" program.

Hart's program will begin with a group of numbers typically Italian with their lyrical strains. The second portion will be highlighted by a recitative and aria from Bach's "Aeolus Appeased," an extremely difficult composition.

The dramatic "Cortigiana, VII Raza Dannata" from Verdi's

"Rigoletto" holds the third place in the concert. The selection appears in the opera when Rigoletto pleads with the compe to return his kidnapped daughter.

Selections of the fourth group present Brahms, Wagner, and Wolff in contrasting moods. Outstanding in the concluding portion will be Rinsky-Korsakoff's dramatic "The Prophet."

The accompanist for the evening will be Mary Goodell, freshman music major from Lansing and pupil of Maurice Dumensil of the college music department.

# MICHIGAN STATE NEWS

Entered as second-class matter under act of March 1879 at the post-office, East Lansing, Mich. Offices located on ground floor of east wing of Union Building Annex, room 8.  
 Published daily except Sunday and Monday mornings during the regular school year and Thursday mornings during summer session by the students of Michigan State college.

Member Associated Collegiate Press Telephone — College Phone 8-1511.  
 Editorial Office — Ext. 269; Business Office — Ext. 268.  
 Subscription rates—3c per copy; \$3.50 per year by mail; \$2.25 per year by college carrier to students; \$3.00 per year by college carrier to non-students.

MEMBER OF THE ASSOCIATED PRESS  
 The Associated Press is exclusively entitled to the use for republication of all news dispatches credited to it or not otherwise credited in this paper and also the local news published therein. All rights of publication on special dispatches herein are also reserved.

Faculty Adviser: A. A. Applegate  
 Manager: Barbara Dennison  
 Advertising Manager: Barbara Fearnside  
 Night Editor: Marlon Heckel

## Weekly Letter to Men in the Service

May 19, 1945

**D**EAREST JOHNNY,  
 Good news. The sun's out, the temperature's up and so are most everyone's spirits. Plus that, President and Mrs. Hannah are the proud parents of another boy, Thomas Arthur, so things here are definitely on the upgrade.  
 Guess what the engineers are doing—I think they must be in their second childhood but it sounds like fun. Their classes were excused yesterday so they could see animated Walt Disney movies of "Basic Electronics" and "Basic Automatic Airplane Pilot Control". What, no Mickey Mouse?  
 Many coeds with svelte figures (and aching muscles) haven't achieved their standing with the DuBarry success course, but just a few months' workout for the Orchesis-music department presentation of "The Masque of the Red Death" to be given tonight. Many other dances will be on the program, too, so it's a shame you can't be here to gaze at the chorus girls.  
 Homemaking Home Ees held their annual banquet Thursday night and awarded their brightest lights cups and cash scholarships. I guess all of them will make lovely wives, but don't get any ideas. I know how to cook a few things myself—fudge and tea, at least.  
 Next year's freshmen women will be well taken care of, even without you. Sixty coeds have been named to guide the newcomers in freshman orientation so the class of '49 ought to be a prize crop.  
 Porpoise, national men's swimming honorary, initiated nine men into the group Monday. It seems as if this week were a good one for it—we've all had lots of water practice, with many of us practically rowing to our classes.  
 If you're interested in women's fashions, and goodness knows you've always had an eye for them, watch out for next fall's college issue of Mademoiselle magazine. Rosemary Howland, a graduating senior, is going big time and will journey to New York this summer to work on the staff of the issue. How about that? Needless to say, she is of course a member of that fine organization, Theta Sigma Phi.

With a smug feeling,  
PEG.

## 'RED DEATH'

(Continued from Page 1)

members will enact the story with a series of original dances. The court dancers will do two numbers, "Pavane" and "Waltz."

Court dancers are Detroit freshmen Betty Rypsom, Iva Jo Rabold and Barbara Reid; Marie Angove, Northville senior; Carol Schier, Dearborn junior; Joyce Schumann, Grosse Pointe sophomore; Mary Mayer, East Lansing junior; Marjorie Jennings, Pontiac freshman, and Pat Pomeroy, Caswell freshman.

Directors of the program are Dr. Reed, the entire production; Buell, dramatics; Schuster, music; Miss Kuchl, dancing, and C. H. Nickle, stage setting.

### Dance Cast

Additional dancers include

Barbara Christianity, Grand Rapids; Marilyn Burley, East Lansing; Marion Farmer, Saginaw and Betty Reidel, Detroit; Helen Gover, Mt. Pleasant sophomore; Audrey Burton and Marty Christianey, Grand Rapids sophomores.

Completing the list of members are: Jean Mobley, Royal Oak sophomore; Jane Wolcott, Fenlon sophomore; Katherine Weiss, Detroit sophomore; Helen Turnbull, Cadillac freshman, and Anita Miller, Detroit.

## Health is Defense

# CANNIFF'S

118 East Michigan  
Lansing



## CAMPUS CHURCHES

By GEORGIE SAGER

### UNITY CENTER

"Whatsoever Ye Sow" is the topic for tomorrow's sermon, which will be at 11 a.m.

### NAZARENE

Worship service will be at 11 a.m.

### PRESBYTERIAN

"The Holy Spirit," text 11:2 is the topic for the sermon tomorrow. The service will be held at 11 a.m. At the school of Christian living, which is held at 7 p.m., Mrs. McIntire will be the speaker for the adult group and the senior high group will have a religious movie.

### CHRIST LUTHERAN

Confirmation service will be held at 10:45. The topic will be "God's Family." Fellowship supper will be held in the church hall at 6 p.m.

### CHRISTIAN SCIENCE

The lesson for tomorrow will be "Soul and Body." Services will be held at 11 a.m.

### ST. THOMAS AQUINAS

The sermon will be on the First Holy Communion. Mass is held at 8 a.m., 10 a.m. and 12 noon. The Newman club picnic has been scheduled for 2:30 p.m.

### PEOPLES CHURCH

"How to Get Everything You Need" is the topic for Rev. McCune's sermon tomorrow. Services will be at 11 a.m. The Student Sunday school class, which is held at 9:30 every Sunday morning, will discuss "A Layman's Background for Study of the Bible." Dr. J. S. Frame of the college mathematics department will lead the discussion.

### CENTRAL METHODIST

"The Day of Power" is the topic for tomorrow's sermon. The junior and senior choir will sing special music in celebration of Whit-Sunday. Services will be held at 11 a.m.

### COLLEGE LUTHERAN

The theme of tomorrow's worship service is "The Blessings of Pentecost." Worship hour will begin at 10:30 a.m. The Lutheran Student club will meet at 7 p.m. by the East Lansing bank.

### ST. PAUL'S

Services will be held at 11 a.m.

### ST. MARY'S

The sermon will be devoted to Pentecost Sunday. Pontifical High Mass will be at 11 a.m. The Bishop will confirm at 2:30 p.m.

## New Board Members To Take Charge Of Points Limitations

New members of Points Supervisory board were announced yesterday by Gayle Oviatt, Washington, D. C. sophomore.

The board is composed of Ginnie Bailey, Grosse Pointe sophomore; Agnes Kirkut, Brighton freshman; Meg Stanton, Birmingham junior; and Virginia Collins, Grosse Pointe sophomore.

Completing the list of members are: Jean Mobley, Royal Oak sophomore; Jane Wolcott, Fenlon sophomore; Katherine Weiss, Detroit sophomore; Helen Turnbull, Cadillac freshman, and Anita Miller, Detroit.

## CLASSIFIED ADS

### LOST

REMOVED from West Entrance of Union Thursday. Red Western Flyer bicycle. Lansing No. 1085. Please return to rack or phone Scovill, 83941. 149

SMALL black Shaeffer Lifetime fountain pen lost between Home Ec building and Valley Court. Reward: 8-2567. 150

SLIDE RULE in tan leather case. Lost about two weeks ago. Call 4-9723. 153

TAN man's rain coat on campus with name Joe Davidson on collar. Call 81881. 150

LORIE watch, sweep second hand, green gold, brown strap. Telephone 8-1237. 150

### FOUND

SMALL pocketbook in Union grill last Friday. Owner contact Thomas Kataenich from 1 to 4 any afternoon, room 112, Union. 150

## Grin and Bear It . . . By Lichty



"Come, come, Otis—the cucumber beetle doesn't bite!"

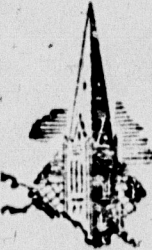
## 'ELIJAH'

(Continued from Page 1)

drought and the forgiving God in response sends a refreshing rain. Part one ends with a magnificent hymn of praise sung by the people.

### Star Performers

Soloists for Sunday's performance will be Elpha, Ted Hart, Gregg, junior music major; Vassar, Obadiah, David Heller, freshman music major, Lansing; an angel, Betty Warner, junior music major, Detroit; Anab, Frederick Kuetner, graduate physics, Hamilton, Ontario youth, Elmer Charney, Lansing boy soprano soloist at St. Paul's church, Lansing.



# Church Directory

<p><b>PEOPLES CHURCH</b> (Interdenominational)</p> <p>Service at 11</p> <p>Sermon: "HOW TO GET EVERYTHING YOU NEED"</p> <p>N. A. McCune, D.D.</p> <p>Student Program, 5 p.m.</p>	<p><b>ST. THOMAS AQUINAS CATHOLIC CHURCH</b> 405 Abbott Road</p> <p>SUNDAY MASSES 8 - 10 - 12</p> <p>Weekday Masses—7 a.m., 8 a.m., 9 a.m., 10 a.m., 11 a.m., 12 p.m. and 7:30 tele. Masses</p> <p>Daily Rosary devotionals</p> <p>For men in service</p> <p>Communion—Friday 8:30 a.m.</p> <p>Fr. J. V. MacFadden, Pastor Fr. Michael Mleko, Assistant</p> <p>Phone 8-3736</p>
<p><b>FIRST CHURCH OF CHRIST, SCIENTIST</b> East Lansing — Masonic Temple 314 MAC Avenue</p> <p>Sunday Service — 11 a.m.</p> <p>"SOUL AND BODY"</p> <p>Sunday School — 9:30 a.m.</p> <p>Wednesday Service — 8 p.m.</p> <p>Reading Room and Lending Library — 211 Abbott Bldg.</p>	<p><b>COLLEGE LUTHERAN CHURCH</b> Worshipping in the East Lansing State Theater, Abbott Road</p> <p>Bible Class at 10:30</p> <p>Worship Service at 10:30</p> <p>"THE BLESSINGS OF PENTECOST"</p> <p>WILLIAM YOUNG, M.A., Pastor</p> <p>Lutheran Student Center 6:30 p. m. at Parsonage</p>
<p><b>UNITY</b> East Lansing Center 224 Abbott, College Manor</p> <p>ROXIE G. MILLER Minister</p> <p>"WATSOEVER YE SOW" Mary Phillips, Soloist</p> <p>Worship and Sunday School Service at 11 a.m., E.W.T.</p>	<p><b>CHRIST LUTHERAN</b> (Missouri Synod)</p> <p>122 S. Pennsylvania near 1000 E. Michigan</p> <p>Worship Service 10:45 a.m. "GOD'S FAMILY"</p> <p>GAMMA DELTA Dinner at 6:00 in Church Hall</p>

# Kobsmen Play Doubleheader On City Field

## Couey or Page to Pitch On Sycamore Diamond; College Field Flooded

Today the Spartans will play a double header game. Yesterday's game was called because the Red Cedar had flooded the outfield, so today's double header will be played at Sycamore park at 1:30 p.m.

Ohio university will invade the Spartans' home ground with a record of eight wins against one loss. The Bobcats one loss was suffered at the hands of Ohio State last week, when the Buckeyes came from behind to score three runs in the eighth inning and two in the ninth to win the game.

Last week the Spartans split their series with Ohio State losing 2 to 1 in a tie that went 12 innings and winning one, 3 to 0. The Spartans' record to date is five victories against three losses, having lost two games to Indiana University.

The probable pitchers for today's game announced by Coach Don Peden of Ohio university are Coach John Kobs are: Frank Page in the first game and Mark Walle in the second game for the Ohio nine.

The Spartans will be represented either by Darrell Couey or Bill Page. Keith Steffee is still bothered with sore muscle in his arm and will be unable to pitch for some time.

There have been no changes in the probable lineup for the game which will include Ben Wanko, catcher; Jack Breslin, first base; Nick Gregory, second base; Dick Mineweaver, third; Martin Hansen, short stop; Rudy Scullani, left field; Lee Grant, center field; and Don Schuler in right field.

### Home Ec Women to Have Interviews for Jobs

A representative of the Michigan Gas and Light company will be on-campus Tuesday to interview new women in the Home Economics division who have completed in foods or business and are interested in a home-ec or demonstration position with the company.

# O'Leary, Maskill Set Spartan Pace at Bloomington



Fleet-footed, Bob O'Leary grids away to win the 440-yard dash for Michigan State during the 29th running of the State Intercollegiate track and field meet. Team-mate, Bill Maskill pulls in a close second.

Both O'Leary and Maskill counted upon heavily to pace the Spartans in their dual meet today with Indiana at Bloomington.

# Weather Halts Tiger Starter With Senators

DETROIT, May 18 (AP) — Rained out of their series opener today for the fifth postponement in as many days for each club, the Washington Senators and Detroit Tigers quickly scheduled a doubleheader for Saturday, jamming their first four-game series of the season into two days. A doubleheader already was set for Sunday.

Hal Newhouser (2-3) and Al Benton (5-0) were Detroit's pitching nominees for the first of the two straight twin bills, opposing Johnny Niggeling (1-2) and Roger Wolff (3-1) of the Nats.

Newhouser, who whipped Washington five times in a row in 1944, will be making his second start in search of his third win this season. New York beat the Tiger outpaw 7 to 3 in his last time out May 11.

Benton will be out to stretch a string of 24 successive scoreless innings hurled in his last three games. He whitewashed St. Louis 1 to 0 May 6 and beat Boston 2 to 0 May 13.

The Tigers are scheduled to make their first eastern swing of the season following the Washington series.

### Max Schmeling Captive

HAMBURG, May 18 (AP) — Max Schmeling, former heavyweight boxing champion who was taken into custody by two British soldiers, was released after several hours of questioning by security police with instructions not to try to leave Hamburg, it was learned today.

### Nazis' Secret Weapon Revealed by Churchill

NEW YORK, May 18 (AP)— Batteries of long-range guns, capable of hurling rocket shells 100 miles, to rain down on London at the rate of 600 an hour; that was Germany's third secret weapon.

Prime Minister Churchill, in his May 13 address, referred briefly to the V-3, calling it "multiple long-range artillery." If the weapon had been used, he said, it would have left "London as shattered as Berlin."

#### BASEBALL STANDING

##### National League

TEAMS	W	L	Pct.
New York	20	5	.800
X-Brooklyn	16	7	.696
X-St. Louis	11	12	.478
X-Chicago	10	12	.455
Boston	10	12	.455
Pittsburgh	10	13	.435
Cincinnati	9	12	.429
X-Philadelphia	6	19	.240

##### American League

X-New York	13	7	.650
Chicago	12	7	.632
Detroit	11	7	.611
X-St. Louis	9	9	.500
Washington	10	12	.455
Philadelphia	9	12	.429
Boston	9	12	.429
Cleveland	6	13	.316

X- Denotes playing night game

Buy \* War \* Stamps

## SUMMER'S A CLOTHES

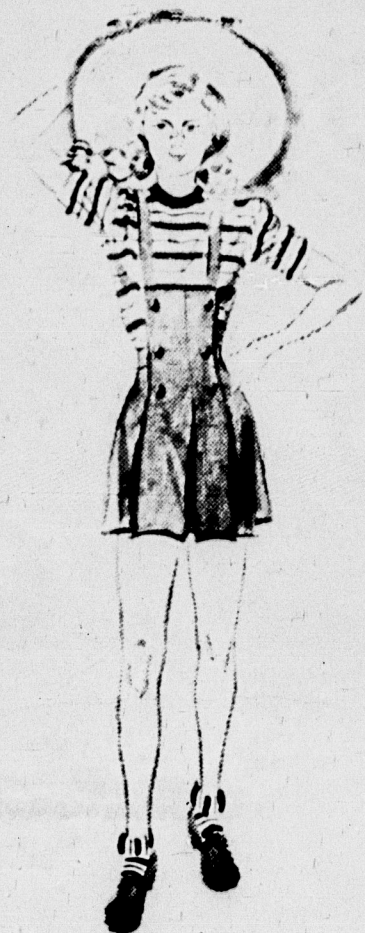
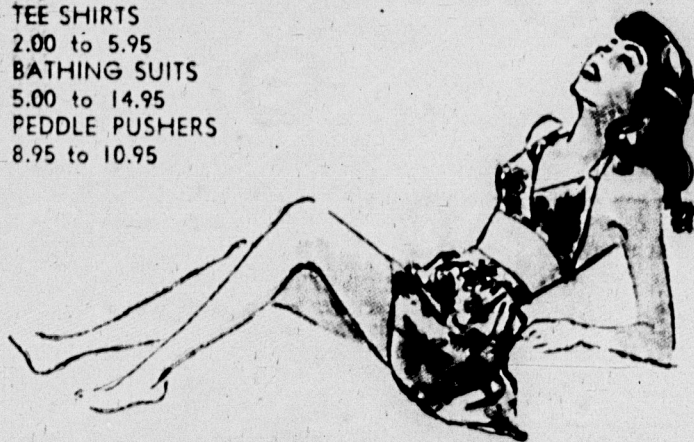
## BREEZE IN LIKE THESE



Summer is just around the corner and Jacobson's are all set to see that you girls have just loads of cute wearables. Whether they're peddle pushers . . . slacks . . . shorts . . . tee shirts or bathing suits. You'll find just what your heart desires in our casual sports department.

- SLACKS 5.95 to 16.95
- SHORTS 3.00 to 5.95
- TEE SHIRTS 2.00 to 5.95
- BATHING SUITS 5.00 to 14.95
- PEDDLE PUSHERS 8.95 to 10.95

Saturday Store Hours 10 to 6



# Jacobson's

115 East Grand River Avenue • East Lansing

A MICHIGAN FASHION INSTITUTION FOR 75 YEARS

Jackson • Saginaw • Ann Arbor • Battle Creek • Grand Rapids • Grosse Pointe

Open a Jacobson Charge Account

# Greeks, Co-ops, Dormitories Announce Weekend Parties

### Term, Radio Dances Head Social Calendar

The home-front is provided with numerous weekend activities.

Mason term party will be a highlight of the evening, featuring Cliff Claycomb and his orchestra. The dance will be from 9 to 12 p.m.

Decorated as a ship, everything will be on the nautical side. Prof. and Mrs. Keith Stein, Prof. and Mrs. Paul Luker, and Mr. and Mrs. R. C. Beauchum will be the patrons.

The Phi Delt's are having a radio party in the Forestry cabin from 8 to 12 p.m. Only Phi Delt not attending the party will be Red, the Irish setter mascot of the fraternity. Patrons for the evening will be Prof. and Mrs. Harold Skamser, Miss Pearl Jackson, and Mrs. E. L. Additon.

Gamma Phi Beta members will start the evening with a formal dinner at 6, following which will be a dance from 9 to 12 p.m. The patrons attending the Gamma Phi term party will be Mr. and Mrs. Glen Stewart and Prof. and Mrs. Guy Hill.

Circus decorations will set the scene for the Alice Cowles term party which is to be held from 8:30 to 12 p.m. Mr. and Mrs. Bernard Knittel and Prof. and Mrs. Walter Reuling will be the patrons.

### Picnic Becomes Dance

Robinson house coeds will start their term party at 8 and end at 12 p.m. Originally slated as a picnic party, the plans have been changed so that music and dancing will be incorporated. The patrons will be Dr. and Mrs. John Harrison and Prof. and Mrs. Walter Abell.

The radio party at the Alpha Chi house starts at 9 this evening. Music will be furnished through records. On the attendance list will be patrons Dean and Mrs. Henry Dirks and Col. and Mrs. Grover Egger.

The Zeta Tau colors, aqua and silver, will be the basis for the decorations for their term party this evening from 9 to 12. The members will receive their guests, among whom will be the patrons, Prof. and Mrs. Charles Barr and Prof. and Mrs. Stuart Gallacher, at the chapter house.

Both the Alpha Gams and the K Ds are having exchange weekends with their chapters at the University of Michigan.

The Sigma Kappas are taking their mothers to the Masque of Red Death and will complete the event with a coffee at the house. Sunday the mothers will be guests at dinner and a program will be presented later in the afternoon.

Fern house is having a tea for house presidents and house mothers from 3 to 5 p.m. Sunday.

## State Service Section

Cleaners

**Twickells**  
Tailors  
271 M. A. C.

### Mar-Jo Shop

SPECIAL  
Silver Barrettes  
Now 89c

Across from the Union

### B. A. Faunce Co., Inc.

Real Estate — Insurance  
Property Management — Bonds

110 W. Grand River 8-2213

# U.S. Delegates Backed in Plan By Stettinius

### Russia Opposes British And American Stand On Trusteeship

SAN FRANCISCO, May 18 (AP)—Secretary of State Stettinius replied to criticisms of the American position on trusteeships today by declaring "attainment of independence is one of the United States' objectives in any government of dependent peoples."

In a formal statement the secretary upheld the American delegation's support of a trusteeship proposal which declares the aim is to promote the political, economic and social advancement of their inhabitants and their progressive development toward self-government in forms appropriate to the varying circumstances of each territory.

"It is our understanding," Stettinius said, "that this clearly includes the attainment of independence of the people of a trusteeship area when they so desire and are prepared and able to assume the responsibility of independence."

Russian delegates to the United Nations conference have suggested that a five-power working agreement of the trusteeship question be amended to list "independence" as one of the direct objectives of the projected new system.

The Chinese offered yesterday a compromise amendment which would list both "self government" and "independence" as objectives. The British delegation opposed direct inclusion of the word "independence" and the Americans sided with the British against the Russians on this issue.

## GUAM

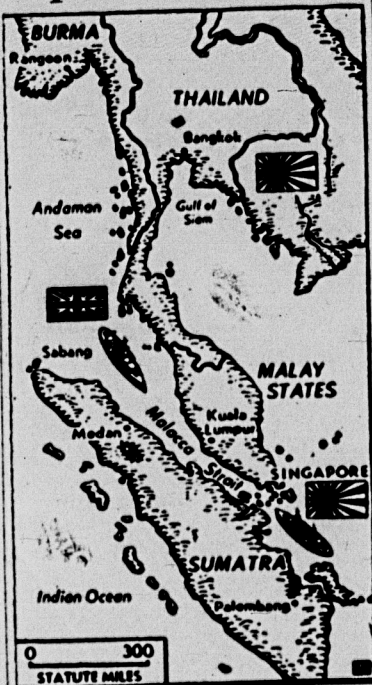
(Continued from Page 1)

leathernecks repulsed a number of small but savage counterattacks in this push.

A few enemy planes appeared over the Okinawa area late Thursday and in the early hours of Friday. Nimitz did not say whether they were able to reach their targets, or whether any were shot down.

Probably the most spectacular action yesterday on the southern Okinawa front was the one-hour grenade duel in which G company finally drove fanatically counterattacking Japanese off the crest of Conical hill, near the east coast. The company then captured the peak.

## Nips Claim Battle



Domei, Japanese news agency, has reported that Nipponese surface units engaged a British task force in a heavy battle in the Malacca Strait. There has been no Allied confirmation to the announcement.

## — THE — WOMAN'S WORLD

### EDUCATION STUDENTS

All education majors and minors are invited to a meeting of the Elementary education club Tuesday night at 7:15 in room 115 Union annex.

Dr. Fred Dixon, superintendent of East Lansing public schools, will speak on "What the Superintendent looks for in the prospective teacher."

### SWL

A reception honoring their seniors will be given by SWL Wednesday evening at 7:15 in the Faculty dining room. Nedra Macduff, Pontiac junior, announced yesterday. All SWL members planning to attend should notify Miss Macduff or Irene Cunat by Tuesday noon.

Women in the social and personality groups of SWL who have assignments should report to Miss MacDuff or Miss Cunat also.

### Student Council Slates Dinner for Members

Representatives from dorms and off-campus houses to Student council will be announced at the annual banquet for old and new members of the council Thursday.

At the close of the banquet, officers for the coming year will be elected.

According to Pres. Ed Wallace, Hartford, Conn., senior, petitions for representatives from women's residences must be turned into him by Wednesday.

## STATE SUNDAY



Cartoon - Late News



—Now Showing—

# "The Good Old Days"

LAST DAY  
Fred MacMurray  
"PRACTICALLY YOURS"



## INFORMATION

### GREEN SPLASH

An important meeting of the cast of "Alice in Waterland" and all members of the Green Splash will be held on Tuesday from 5 to 6 p.m. in the Women's gymnasium.

### HILLEL

A dance sponsored by Hillel extension will be held at the Shaarey Zedek synagogue in Lansing at 8:30 tonight.

### GAMMA DELTA

Gamma Delta will meet at Christ Lutheran church Sunday at 6 p.m. for a supper meeting. There will be an election of officers which will be followed by a discussion on "My Church and Others," led by Rev. Waldt. All Lutheran students are invited to attend as plans for next year will be made.

### BIG SISTER

An important meeting of the Big Sister council will be held Monday evening at 5 o'clock in organization room 2 of the Union. Plans will be made for sign-up Big Sisters next week, according to Betty Satterley, Evanston, Ill., sophomore.

### INTERFAITH COUNCIL

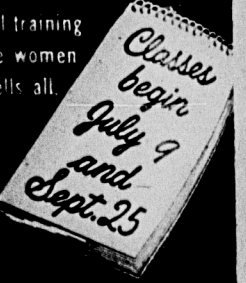
An election of officers for Interfaith council for the coming year will be held at a meeting of the council this Monday night

at 8 in room 107 of the Union annex, according to President Marion Hadsall, Cohoctah sophomore. All members and new representatives are asked to attend.

### ORIENTATION LEADERS

Freshman orientation leaders will meet Wednesday to discuss plans for next year's orientation program, according to Mickey Moseley, Beltsville, Md., junior, and Barbara Bennett, Detroit junior.

Secretarial training for college women  
Catalog tells all  
Address  
College  
Course  
Dean



Katharine Gibbs

230 Park Ave.  
Marlborough St.  
Michigan Ave.  
155 Angell St.

## WANTED!

## HELP

WITH A  
CAPITAL

## HE

## PART TIME WAR WORK

(20 - 35 Hours per Week)

EARN WHILE YOU LEARN

## FOUNDRY

AND

## MACHINE SHOP

PRACTICE

## NOVO ENGINE CO.

702 Porter St.

LANSING

For Complete Details

Contact

## TOM KING

Placement Service Director

(Old Music Bldg.)  
Ext. 525