





Past mistakes bother some people especially when they are too old to repeat some of them.

Best Judge



Lawrence Davenport, son of President and Mrs. Ralph Davenport of the Lapeer County Farm Bureau, was winner of the judging contest at the Jersey Parish show at Lapeer August 10, placing first in a field of 27 4-H club youths.

Lawrence Davenport has a splendid record in 4-H club work. As a lad of 12 he began building a herd of Jerseys with one heifer calf. Now he has two cows and three heifer calves, which won ribbons in the show.

When the first eggs are found, all pullets that show much comb development should be housed. Those slower to mature should remain on range until they reach the same development.

About two-thirds of the total buck-wheat crop of the United States is in New York and Pennsylvania.

Nearly 100 Youths Study Co-ops at Waldenwoods

Second Conference on Purpose of Michigan Farm Organizations

Nearly 100 young men and women from Michigan farms, interested in the work of local and state co-operative organizations of farmers, attended the second conference at Waldenwoods, Livingston county, August 27-Sept. 4 to become better acquainted with the subject.

The conference was sponsored by the Michigan State Farm Bureau and Farm Bureau Service and affiliated commodity marketing exchange. Each of them sponsored a number of young people to the conference. The students paid part of their expenses, and qualified for the conference, according to the requirements of their sponsors.

Waldenwoods is a beautiful set of community buildings beside a lake on the grounds of the Crouse Foundation near Hartland, Michigan. It is open to groups interested in community im-

provement. The young people heard lectures on co-operative farm groups, talks regarding self improvement, discussions of plans for living and life work, and enjoyed a well balanced program of social entertainment. Brought together from many communities, they became acquainted with each other and with the several types of business organizations farmers are building in Michigan.

Instructors for the conference included: R. A. Waite of the American Youth Foundation; Dr. O. W. Warrington of Boston University; Dr. David Trent, from Hillsdale college; Alfred Bental, Jack Yaeger and Ben Hennink of the Michigan State Farm Bureau.

Lecturers from the commodity exchanges included: Neil Bass, Elevator Exchange; Pres. E. A. Beamer, Michigan Live Stock Exchange; Dr. E. J. Brach, Farmers & Manufacturers Beet Sugar Ass'n; B. F. Beach, Michigan Milk Producers Ass'n.



Cromaine Hall is the center of the Waldenwoods group of buildings. It houses the assembly room, dining hall and men's dormitory.

The Waldenwoods conference was directed by Benjamin Hennink, in charge of Junior Farm Bureau work in Michigan. Mrs. Hennink was in charge of housing and other general arrangements. The several commodity exchanges were represented at the camp by employees who served as counselors and sources of information regarding the exchanges. Following is a list of the 1st and 2nd year students at the conference, arranged according to the organization that sponsored them:

- FARM BUREAU: Lloyd Ruesink, Robert Eifert, George Cox, LaVern Rice, Maurice Gierman, George Schleder, Anne Watson, Agnus Turner, Lorraine Marshall, Chas. Bone, Tracey Johnson, Howard Ferris, Roy Cusino, Gerald Kitson, Dale Hostetter, Alberta Foltz, Clara Davenport, Carl Bjork, Dan White, Frank Ries, Don Hickmott, Stanley Lane, Lillian Zech, Dick Driskill, Tom Zerbe, Herbert Waldeck, Paul Kriener, Betty Bryan.

- ELEVATOR EXCHANGE: Lyle Clack, Harry Martlock, Paul Bycroft, Ivan Hunt, Vera Hooper, John Beal, Loren Black, Herbert Schlegel, Dean Heits, Phyllis Birdsall, Lois Graybill, Mary Donald, Grace Moore, Keith Farley.

- BEET SUGAR ASS'N: Dick Albert, Henry Grit, Kenneth Pullman, David Madison, Lois Bateson, Herbert DeVries, Wilbur Saldeen, Gustave Aue, Lloyd Pajot, Glenn Trommeter, Thomas Conniff, Ruth Brown, Florence Graham, Phyllis Clothier, James Bryan, Howard Ferris, Arvela Greenmeyer.

- MILK PRODUCERS ASS'N: Richard Koenigshof, Nelson Brumm and wife, Ruth Schuller, Paul Hussner, Donald Dexter, Carl Ballinger, Doria Monte, Boyd Veenkant, Orville Specker, Noble Welcott, Richard Christenson, Edna Eggleston.

Alfalfa Needs Month Vacation

Alfalfa, the crop that gives Michigan a national crown covering one and one-quarter million acres, needs a month vacation during September. From experiments at Michigan State College and demonstrations that have been carried out in nearly every county in the state by members of the extension service, proof is found that the vacation is necessary.

Alfalfa is one plant that needs to have a chance to get ready for winter. S. T. Dexter, college specialist in farm crops, explains that much of the winter damage to alfalfa is the result of improper fall management. Second cuttings, if taken at all, ought to be off the field by the middle of August. Then the plants have a chance to put out new growth and store up food in the roots to defy freezing temperatures.

Even September pasturing is not advised. After a cutting is made, or while alfalfa is being pastured, the new growth that shows up is at the expense of food stored in the roots. New leaves then put back this food. If the alfalfa is cut so late that the leaves cannot grow or do not have time to restore the food supplies to the roots, winter killing occurs.

Avoid cutting or pasturing alfalfa in September. Dexter advises farmers who plan to use a field the following year. If a second cutting is taken late in August, further cutting or pasturing is considered unwise.

Elevator Exchange Re-elects Officers

The Michigan Elevator Exchange, a co-operative organization of 100 state dealers, re-elected Milton Burkholder, of Marlette, president at its annual meeting September 1. Carl Martin, Coldwater, was re-elected vice president. Others re-elected are Frank Gilmore, Patra, secretary-treasurer, and L. E. Osmer and Neil Bass, of Lansing, managers. Directors re-elected were Andrew

CONNECTS 10,000 FARM CUSTOMERS

Consumers Power May Build 4,000 Miles of Farm Lines This Year

Between January 1 and August 31 the Consumers Power Company has built 1,935 miles of rural power line extensions, to bring service to 10,490 rural customers, said Herman Gallagher, rural service supervisor of the company recently.

The company, said Mr. Gallagher, expects to build 4,000 miles of rural line this year. Approved for construction by its engineers are 2,000 miles of proposed farm lines. New applications are being received at the rate of 300 miles of line per month.

For the 17 months ending August 31, the Consumers has built under the Michigan plan 3,827 miles of rural lines, to connect 21,295 farm customers. It operates in about 50 townships in 47 counties in lower Michigan.

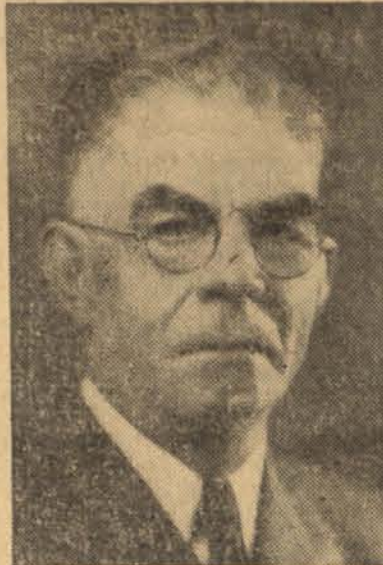
Under the Michigan plan, the Consumers and other power companies, Michigan public utilities commission order, build rural lines at their own expense where there is an average of 5 customers per mile for the length of the extension. If there are less than five per mile, a contribution of \$100 toward the expense of the line is required for each customer less than an average of 5 per mile. Should additional customers come on the line, the \$100 units are returned to the original contributing customers.

His Catch a 50 lb. Snapping Turtle

Lansing, Sept. 1—A monster snapping turtle, largest in years to come to the attention of conservation authorities here, is in Lake Lansing, a small resort lake near this city.

The turtle was caught in a trap by Dan Shiffer of Lansing, who took its measurements and left it in his boat while he went for an axe. From end to end of the top of the shell was 32 inches in length and in width, 23 inches. Fisheries men estimated the turtle would weigh 50 pounds or more. When Shiffer returned the turtle

Newaygo's Guest



JOHN B. STRANGE

Commissioner of Agriculture John B. Strange spoke to the Newaygo County Farm Bureau and Newaygo county farmers co-operatives at their joint picnic at Fremont Lake, August 26.

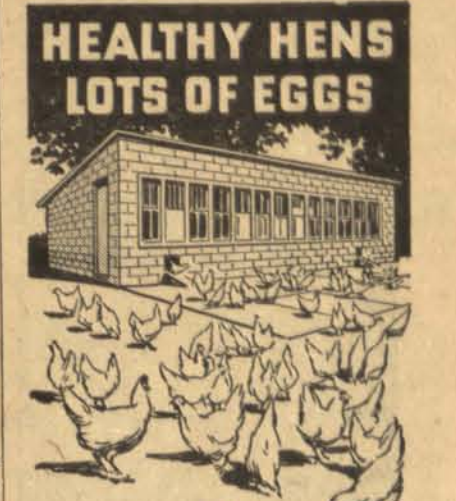
Success of a farmers co-operative depends in large measure upon the selection of a good manager and directors, said Mr. Strange, speaking from his long experience with the successful Grand Lodge Co-operative Produce Co. and the Lansing Dairy Co. Michigan, said Mr. Strange, is just beginning to co-operate with federal authorities in the inspection and marketing of farm products. In the Michigan tag for quality, Mr. Strange sees great benefits in building up the reputation of Michigan products, as well as protection for shippers.

Twenty-five men who averaged better than 150 pounds held a 3,200 lbs. tractor to a standstill in a tug of war. A splendid program of music was presented by members of the several organizations.

Entering a farm silo while it is being filled, or shortly after, is dangerous because of the possible presence of suffocating gases. was gone. He has set his trap in the hope of catching it again.

Uncle Ab says there are two ways of getting ahead; one is by using liquor and the other is by not using it.

Summer is the best time of year to build a poultry house. This gives the cement floor, the most desirable type, a chance to dry before cold weather.



HEALTHY HENS LOTS OF EGGS with a CONCRETE POULTRY HOUSE

FOR healthier, more productive flocks, build your poultry house of concrete... easy to insulate, light and airy, permanent. Concrete has no crevices for lice, mites and other parasites; keeps out rats, weasels and vermin; is easy to keep clean and dry; does away with the need for frequent, costly repairs. Write for free booklet, 'Concrete Poultry Houses,' showing layouts of poultry, incubator and brooder houses of various types approved by state agricultural colleges. You can build concrete improvements yourself. Or get a concrete contractor. Your cement dealer can put you in touch with a good concrete builder.

- Check list, paste on postal and mail for free literature. PORTLAND CEMENT ASSOCIATION Dept. W9-4, Olds Tower Bldg., Lansing, Mich. Feeding Floors, Hog Houses, Foundations, Barns, Silos, Concrete Poultry Houses, Storage Cells, Milk Houses, Concrete Making.

CERESAN advertisement: NEW IMPROVED CERESAN DOES THESE 4 THINGS TO MAKE WHEAT PAY BETTER. Checks Seed Rotting, Reduces Seedling Blight, Controls Stinking Smut, Improves and Increases Yields.

You do just one thing—treat your seed with New Improved CERESAN—and this effective dust disinfectant does four! Checks seed rotting, reduces seedling blight, controls stinking smut, and improves and often increases your wheat yield—at a cost of less than 3¢ an acre! The U. S. Dept. of Agriculture, along with many Experiment Station authorities, recommends this treatment. It is a protection against seed-borne stinking smut—a way to better yields. Even on clean seed the average increase has been 1.13 bushels an acre. Easier to apply. One-half ounce per bushel—costs only 2 cents. No drill damage. Controls covered smut and stripe of BARLEY, and smuts of OATS—often increasing stands and yields of both grains. One lb., 70¢; 5 lbs., \$3.00. Come in now for your copy of free Cereal Pamphlet.

BUY FROM YOUR FARM BUREAU DEALER

And save postage. Or buy from us cash with order, 1-lb. can 70¢; 5-lb. can \$3, PLUS parcel post at 70¢ per lb.

FARM BUREAU SERVICES, Inc. 221 N. Cedar Lansing, Mich.

TREAT SEED EVERY YEAR - IT PAYS

FERTILIZE Your FRUIT TREES this Fall with Granular 'Aero' Cyanamid the non-leaching NITROGEN FERTILIZER. Get the job out of the way of Spring work. Ask your local dealer for Leaflet F-142 or write AMERICAN CYANAMID COMPANY NEW YORK, N. Y. 'Aero' Cyanamid is Nitrogen plus Lime.

We'll sue you! This threat is heard not long after strangers—or even neighbors—get tangled with each other in an automobile accident. There's more or less damage to be paid for. It sounds bad—and it is bad. If suit is started and you have no insurance, you have to hire a lawyer, and perhaps pay both damages and costs after all. Win or lose, it's hard on you. Isn't it a good idea to carry an automobile insurance that will stand all legal expense and assume the loss, according to the policy, in case you SHOULD have an accident? The semi-annual expense of such protection in the State Farm Mutual Automobile Insurance Company is very reasonable. We have more than 500,000 policyholders and 7,000 agents in 35 states in this national Legal Reserve Company. Let our local agent explain our policy to you. STATE FARM MUTUAL AUTO INS. CO. Bloomington, Illinois MICHIGAN STATE FARM BUREAU, State Agent, Lansing

A GOOD TIME TO PAINT ECONOMICAL FARM BUREAU PAINTS. ONE GALLON OF FARM BUREAU HOUSE PAINT will cover 300 sq. ft. two coats on average surfaces. It's a job that settles the paint question for many years. Our house paints are a combination of lead, zinc, and inert with pure linseed oil and thinners. Good paint makes the best wearing and the cheapest job. See Your Co-op. Now is the time to paint. Ask your co-op for our free folder showing color chart of 43 numbers of Farm Bureau paints, the best for your money. We have a fine line of wall and floor paints. House, Barn, Roof - Interior Paints - Enamels, Varnishes.

Use Farm Bureau Fertilizers This Fall More Plant Food... Drill Perfectly... Priced Right. TABLE 1. Fertilizers Recommended per Acre for Wheat or Rye Grown on Sandy Soils. TABLE 2. Fertilizers Recommended per Acre for Wheat or Rye Grown on Loam Soils. Ask Your Farm Bureau Dealer for These and Other Farm Bureau Analyses Suited to Your Territory.



KILL WEEDS

By Complete Penetration with ATLACIDE

the chlorate weed killer, used as a spray. Kills leaves, stems, complete root systems of weeds.

Canada Thistle Quack Grass Bind Weed Poison Ivy Willows Brush White Top Sow Thistle Wild Oat Grass Other Weeds

Atlacide is safe to use when applied in weed killing solutions as recommended. Not-poisonous to live stock.

FARM BUREAU SERVICES, Inc. Lansing, Mich.

Farm Bureau Insurance Service Touches Daily Lives of Thousands of Farmers

32,000 Farm Automobiles

Lives in 5,000 Farm Homes

Dwellings and Farm Buildings

4-H Club Calves, Etc.

By ALFRED BENTALL

Insurance Director for the Michigan State Farm Bureau

Eleven years ago the Michigan State Farm Bureau became the sole Michigan representative of the State Farm Mutual Automobile Insurance Company of Bloomington, Illinois.

To some 32,000 or more farm families, we are affording adequate financial protection in case of traffic accident in which they may be involved on our highways.

When a man's car is stolen, we either recover it and put it back into shape or pay him its value.

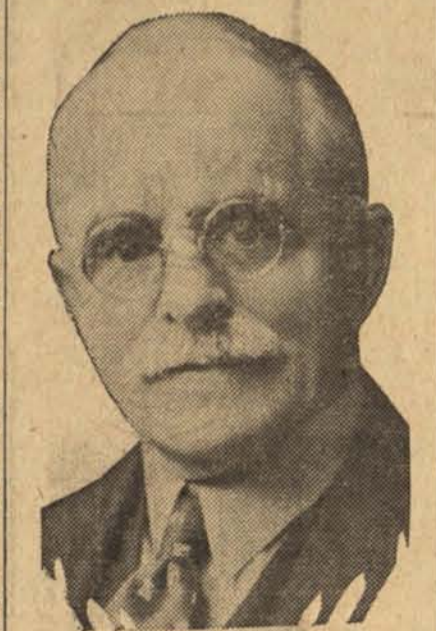
The most valuable part of our protection of course is when we stand between the policyholder and liability damages which may run into many thousands of dollars and can easily cost all that the farmer has.

Today a report came in that one of the Kalamazoo Milk Producer's trucks we have insured had collided with another motor vehicle in which there were six people.

Some time ago, the wife of a Missouri policyholder was visiting Lansing. She was so unfortunate as to be involved in an accident which resulted in the death of a Lansing man.

This is one of the things that makes

our insurance service so valuable. The State Farm Mutual is operating in 39 states with over 7,000 agents.



ALFRED BENTALL

holland line to the Gulf of Mexico and from ocean to ocean. The Company paid out last year more for collision insurance than any other company in the country.

Farmers Not Immune To Labor Troubles

Milk Strike and Picking Plant Union Have Had to Be Met

We have watched some of the maneuvers of the organizations created in behalf of labor with much disgust, and we have been free to tell what we would do if we were hiring some of this labor.

Farmers know but very little about strikes and unions and pickets. Whenever the country gets stirred up over a labor disturbance, we have told how we would handle the situation if such a thing should ever happen to us.

We read about the "sit downs," picketing, tear gas, state police and the militia, but we kept on in our usual way, feeling quite immune.

How rapidly our sense of security left us when all of a sudden one morning a warning was received at our local milk station to be most certain that there had been no contaminating substance dumped into the thermos tanks during the night, as had been the case in other places and the entire milk supply made unfit for consumption.

There are those who today claim to speak for the farmer, who talk very glibly about "preserving the individuality of the independent farmer."

When we hear about the demands of radical labor groups we sometimes wonder if some of our own actions are not being reflected. For years there has been group after group of farm people following radical leadership of one sort or another, making demands just as ridiculous and just as unfair and unwise as ever heard from labor.

Some of us were brought face to face with the demands from labor employed in the co-operative farmer owned Detroit Packing plant. We employ from 175 to 200 people. We were informed that a labor local had been organized within the plant and over 85% of those employed had agreed to go along with them.

Their demands were many and some were unreasonable. Their committee was granted a hearing. They appeared before the packing house board of directors and plainly showed their inability to think straight or to reason out a difficulty. They presented a labor contract, and we requested an opportunity to prepare a contract of our own planning.

Life Insurance Service The Michigan State Farm Bureau is also the sole state agent for the State Farm Life Insurance Company.

A while ago, one of our agents met a young man who was working away from home. He said that he was too hard up to pay for any insurance; that his widowed mother and small children were about to lose the little home they had.

It was a great help when our agent took a check for \$1,000 to the widowed mother. She had not known that the insurance was in force.

There have been many other cases in which the proceeds of the State Farm Life insurance policy has stood between a family and financial disaster. The State Farm Life Insurance Company furnishes every type of policy that can possibly be needed, from birth to age 65.

Our latest addition to the Farm Bureau insurance program is that of taking on the agency for the State Farm Fire Insurance Company. We have already been a material assistance to many people in the matter of fire insurance protection.

Our fire insurance program does not interfere in any way with that of the Farmers Mutual Fire Insurance

nothing for us or the business but insist on their "rights" to the point that they become a part of the machinery of operation but sacrifice the human interest we would like to take with each individual.

Not As Expected To unionize a plant does not necessarily mean shorter hours, more pay and greater privileges. There were many disappointments among our employees when they began to realize the true situation.

For instance, one man had worked himself up through a period of time to a flat rate of \$40 per week, but when he came under a union labor classification at so much per hour, and 44 hours a week, his weekly pay check was a trifle over \$24.

Imagine his consternation when he learned that the plant insisted upon living to the letter of the contract that had been forced upon it. He begged for overtime at 1 1/2 times the hourly rate, but there was no rush of work in the plant. Labor's plea had been for shorter hours to fill the need for adequate rest and recreation.

A privilege that was lost to employees in the labor contract was that of buying meat at a discount for home consumption.

Some of the incidents developed by the labor contract have been humorous. A girl in the union decided to get married. She asked for her annual vacation, but according to the union schedule for the employees her honeymoon must be postponed until the second week in January. Union disposition of vacations was quite a job to her.

The girl was employed at skinning onions to be used in some of the cooked meat products. Her husband objected to the odor of onions on his wife's hands, so she insisted on a change. There seemed to be but one place where a shift could be arranged, so the plant manager set her at "tying guts." After 44 hours of that, the onion odor was not so obnoxious.

To be sure, there are many jobs connected with the packing business that are not so pleasant, and not everyone would care to do. But when a shop has been unionized and a contract drawn up between labor and the management, the best thing to do is operate strictly according to the letter of the contract. Any deviation is held to break the contract. That sort of a situation has its drawbacks for everyone concerned.

In my opinion labor should organize and should aim to be beneficial to the firm they are working for, and work in a co-operative spirit and make themselves so valuable to their firm that there can be no disputes about wages or time or privileges.

Farmers must realize that they must stop drifting but rather must see far enough ahead so that they can have sane, sensible plans worked for governing all sides of their business.

Farmers, we must spend more time in thinking our problems through; we must learn to live co-operation and not just talk it. We must think more of all farmers and not just a certain group. We must have a long time farm program to work to, and we must give due consideration to all other classes of people.

A 500,000 candlepower beacon throwing a finger of light 19 miles to sea is to be erected on Maui island 100 miles southeast of Honolulu. Lightning kills about 500 persons in the United States annually.

last month, Max Avery, a 4-H Club boy in Calhoun county lost a calf within a week after he insured it. Inside of another ten days, we sent him a check for \$45, with which he bought another calf which he had insured in the State Farm Fire Insurance Company.

In addition to the fact that through our State Farm Bureau Insurance Service we can offer any line of protection needed in automobile, life or fire insurance, we are also glad to extend insurance counsel to all who need it.

You, too, can be protected in Michigan's largest farm mutual fire insurance company with nearly \$250,000 in assets and resources, over one-half of which is in cash, government bonds and bonds guaranteed by U. S. Government.

State Mutual Fire Insurance Co. of Michigan

Don't Just Buy Insurance - Buy Protection

MR. LIVESTOCK PRODUCER

The Michigan Livestock Exchange is a farmer owned and controlled organization—offering you the following services:

SELLING Commission sales services on Detroit and Buffalo terminal markets. Feeders through national connections, can furnish at cost plus a reasonable handling charge, all grades of feeding cattle and lambs.

FINANCING 5% Money available for feeding operations of worthy feeders who have feed, regardless of where they purchase their feeders.

MARKET INFORMATION Listen to the Farm Market Reporter, sponsored by the Ford Dealers of Michigan each market day at 12:15 P. M. over the Michigan Radio Network.

Table with 4 columns: Station, Location, Kilo-cycles, Station, Location, Kilo-cycles

MICHIGAN LIVESTOCK EXCHANGE, Detroit Stock Yards

400 Every Gram of NOPCO XX Contains 400 Units of Vitamin D

MICHIGAN BELL TELEPHONE CO. Make Plans for the Fair by Telephone

Farmers Not Immune To Labor Troubles

The Farmer Says "OK" on Farm Bureau's Tractors! Our Co-op No. 2 Tractor Made in 1, 2 3 or 4 Plow Sizes

### SHALL FARMERS BE DENIED ELECTRIC LINES?

Utilities Have Been Forbidden To Build Lines Promised Months Ago

Shall the Rural Electrification Administration with \$6,000,000 for Michigan farm power lines, and Michigan power companies, now engaged in building probably \$5,000,000 of rural lines in 1937, be maneuvered into a throat cutting match?

Farmers on rural lines extensions which have been accepted by power companies, are finding their expectations for early service blasted in some sections because the public utilities commission has refused the power company permission to proceed with construction.

It is perhaps unavoidable that the power companies, connecting farm homes in lower Michigan at the rate of 20,000 a year, and the REA should come to grips over the same territory. The REA is permitted to go in anywhere. Power companies are restricted to territories.

#### How Construction Is Blocked

The REA has been struggling for months to get itself into position to build lines. Now it expects to get its construction under way this fall. In the meantime, a situation has arisen whereby extensions made ready for construction by power companies can be denied construction.

In May the legislature passed a law requiring that for any extension more than a mile in length, a power company shall have to get permission from the utilities commission to proceed with construction.

Ostensibly, the law was to prevent construction of spite lines. When the power companies ask permission to proceed with construction of a rural extension that has been months in the making, they may get a letter back advising that the extension has been awarded "to another utility."

The immediate losers are the farmers on the line. For them electric service is indefinitely postponed. In the Tri-County REA project of several central Michigan counties, it is reported that 70% of existing power company lines and rural extensions in various stages of progress have been paralleled by proposed REA extensions.

Both the Michigan State Farm Bureau and the Michigan State Grange have supported the Michigan plan, under which the power companies are operating to build lines at their own expense. Both farm organizations have been friendly to REA construction in Michigan. Both groups have held that the farmer should be the judge of which type of service suits him best and is the most economical. Both the Grange and the Farm Bureau will object to rural lines promotion methods designed to interfere with that free choice on the part of farmers.

### 21 Counties Ready for 300 Club

A new idea in Farm Bureau clubs is to be initiated at the annual meeting of the Michigan State Farm Bureau at Lansing in November, say leaders of the outstanding County Farm Bureaus.

The new club will be organized at a breakfast meeting of the officers and directors of all County Farm Bureaus with paid memberships of over 300. Only those from counties with memberships of or over that figure will be eligible. The club is to be called the 300 Plus Club, from the fact that members are officers of a county Farm Bureau with a paid membership of 300 or over.

The purpose of the club is to get together the leaders of the outstanding membership counties for the purpose of recognizing outstanding membership accomplishments and to formulate programs for promoting membership and community activities.

There are already 21 counties whose officers are expecting to be charter members of the new club.

Members will wear suitable lapel buttons or pins. Each county whose officers are eligible will be awarded a certificate to that effect.

Dark colored towels have become so popular within the last few years that certain laundry companies have worked out a special treatment to preserve attractiveness in towels.

### CREDS ON PURCHASES Help Pay Farm Bureau Dues!

**NOTICE TO MEMBERS:** Purchases of Farm Bureau Brand dairy and poultry feeds, seeds, fertilizers and other goods from your local dealer; also, purchases from our clothing and blankets dept. at Lansing, are eligible to membership credits when declared.

**MAIL YOUR DEALER SALES SLIPS** to the Michigan State Farm Bureau, Membership Dept., 221 North Cedar Street, Lansing, about every three months.

**BE SURE** Farm Bureau brand goods are entered on slip as "Farm Bureau Alfalfa," "Milkmaker," "Stermash," etc.

\$10 annual dues mature life memberships; \$5 annual dues do not, but participate in Membership Credits, which reduce the amount of dues payable.

Life members receive their Membership Credits in cash once a year.

We furnish addressed, postage pre-paid envelope for this purpose on your request.

MICHIGAN STATE FARM BUREAU  
Lansing, Michigan

## FARM BUREAU FERTILIZER AND CERTIFIED WHEAT ARE GOOD PARTNERS



### FARM BUREAU'S QUICK ACTING Fertilizer MAKES GOOD STANDS

NITROGEN SUPERPHOSPHATES  
95% Water Soluble QUICKLY AVAILABLE TO PLANTS  
WORLD'S BEST POTASH

*Farm Bureau Fertilizers Are Always a Money Maker on Fall Grains*

**\$1 for Fertilizer Returns \$2.43 in Tests Made on Townsend Farm in Ionia County**

Mr. Emory S. Townsend of Ionia, R. 1, is known as one of the best live stock farmers in Michigan. He also produces a lot of wheat. Last fall, in co-operation with Farm Bureau Services dealer Johnathan Hale & Sons at Ionia, Mr. Townsend divided a 28 acre wheat field. To one-half he applied Farm Bureau 0-20-0 fertilizer at 200 lbs. per acre. The other half was not fertilized. At harvest he compared results:

	Total Yield	Average per Acre
Unfertilized 14 acres	479 bu.	34 3/14 bu.
FERTILIZED 14 acres	557 bu.	39 11/14 bu.

The wheat tested 59 lbs. At \$1.00 a bushel, the return was \$5.60 more per acre on the fertilized half. The fertilizer cost was \$2.30 per acre. Therefore the fertilizer paid for itself and earned a profit of \$3.30 per acre. Each dollar of fertilizer investment paid back \$2.43 in increased yield.

## Certified Fall Grains

Certified Wheat and Rye out-yield ordinary seed and produce top quality grain. Their small extra cost per acre is a good investment. The varieties below are the best and highest yielding for Michigan. Produced by the Michigan Crop Improvement Ass'n.

**BALD ROCK**—Beardless, soft, red winter wheat. Big yielder. Resistant to lodging.

**AMERICAN BANNER**—White, soft winter wheat. Beardless. Stiff straw. Winter hardy. Heavy yielder. Best for lighter wheat soils.

**ROSEN RYE**—Outstanding heavy yielding rye. Large plump berries. Well filled heads. There is no better rye.

**WINTER VETCH**—Sow with rye. Excellent cash seed crop. Michigan is specially adapted to vetch seed production. Vetch, a legume soil builder.

Buy at Farm Bureau Stores and Co-op Ass'ns

### WE BUY SEEDS - - - WE CLEAN SEEDS

We buy Michigan grown alfalfa, red clovers, alsike and sweet clover seeds. For a bid, send us an 8 ounce representative sample. Take equal amounts from each bag to make mixture from which to take sample. We supply mailing bags.

Let us clean your seeds in our modern plant. Very reasonable charges. Send sample and we will advise cleaning needed and price. Have seed cleaned early.

**MILKMAKER Means Moneymaker**

MILKMAKER FORMULAS  
16, 24, 32 and 34%

## See Your Farm Bureau Dealer

FOR FARM BUREAU SUPPLIES

Write Us If You Have No Dealer

FARM BUREAU SERVICES, Inc., Lansing, Mich.

**MILKMAKER Means Moneymaker**

MILKMAKER FORMULAS  
16, 24, 32 and 34%



## FOR LIVE STOCK COMFORT

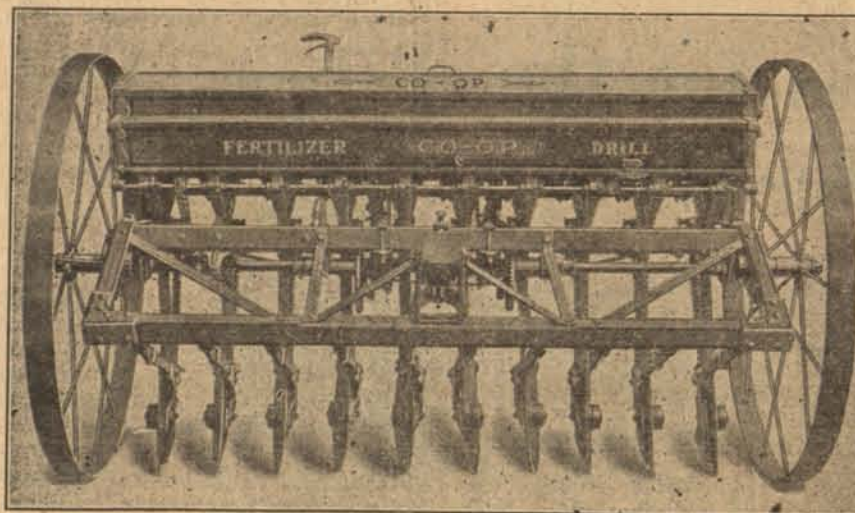


**KILL-FLY**  
For Household Use. Quick, Stainless. Has a Pleasant Odor.

Deadly to insects, and a lasting fly repellent. Harmless to man and animals. Farm Bureau Spray is worth much more than it costs. Sold in gallon, 5 gallon cans and drums.

Buy at Farm Bureau Stores and Co-op Ass'ns

## Farm Bureau Machinery

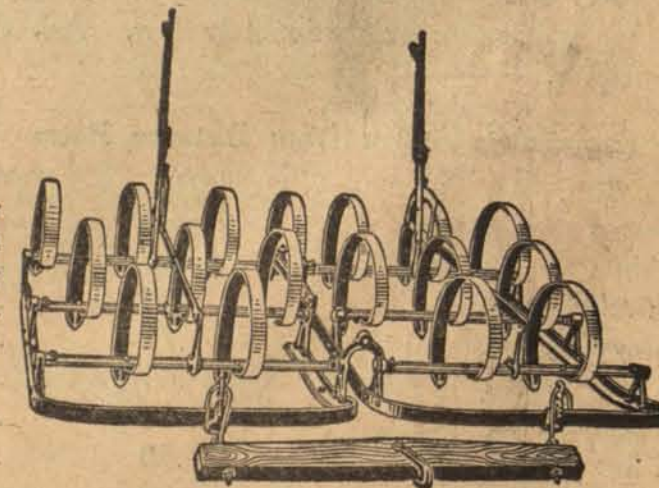


### Co-op Drill

Our fertilizer and grain drill has a combination disc and hoe shoe that avoids clogging. Drills perfectly. Places the seed where you want it.

### Spring Tooth Harrow

Every farm should have one of our spring tooth harrows. Built to last and to do all things well that a spring tooth should do. Works with tractor. Sections can be added.



### Automatic Tractor Disc

This harrow is the last word in convenience and working efficiency. It is entirely automatic in all operations. Built extra strong and will stand up under hard service. Bearings are oiled from bottom.

