

Farmers Clubs 41st Annual, Mason, Dec. 6-7

Mason—Forty-first annual meeting of the Michigan State Association of Farmers Clubs will be at the First Methodist church here, Dec. 6 and 7. Free lodging and breakfast will be furnished officers and delegates by the host Farmers Clubs. Speakers include (Wednesday) Rep. V. J. Brown, Senator A. L. Moore, Lucius E. Wilson, Dr. Ed. Austin of M. S. C.; (Thursday) Dr. W. B. Hartzog, Justice L. H. Fead of the Supreme Court, Dr. Paul B. Voelker, Superintendent of Public Instruction. Sessions begin at 9:30 daily. Churches will serve luncheons and the banquet Wednesday evening.

Court Action on Sales Tax Asked

(Continued from page 1.)
reau's speaking contest for women at the national annual meeting Dec. 4-6. Mrs. A. L. Lott of Coldwater was very close second. Both gave their presentations again at the Farm Bureau's annual dinner.

For Commodity Dollar
Mr. Lucius E. Wilson spoke at the dinner, urging that all farmers join the Farm Bureau in a recovery program, which includes support for controlled inflation to restore farm prices and purchasing power, and a stable commodity dollar.

Six places on the board of directors were filled by the election of J. T. Bussey of Lake Leelanau, president of the Michigan Potato Growers Exchange; M. L. Noon of Jackson, Milk Producers Ass'n; W. E. Phillips of Deatur, Elevator Exchange; Paul Beljick of Bay City; C. S. Langdon of Hubbardston and J. J. Jakway of Benton Harbor.

Other members of the State Farm Bureau's board of 11 directors are W. W. Billings of Davison; Charles Woodruff of Hastings, representing the Michigan Live Stock Exchange; M. D. Buskirk of Paw Paw, Great Lakes Fruit Industries, Inc.; Mrs. Edith M. Wagar of Carleton, and M. B. McPherson of Lowell.

The directors re-elected President Noon for the 7th time since 1924 and his 8th term as president; Mr. Billings was re-elected as vice president and to the executive committee of the Board. Clark L. Brody of Lansing was re-engaged as executive secretary and treasurer.

Pointers by Land Bank Men on Farm Loans

(Continued from page 1.)
Land Bank borrow cheapest when they borrow through a local Farm Loan Association. In the absence of a local association they may borrow direct from the Land Bank at St. Paul, but it costs them a slightly higher rate of interest, which is reduced if such borrowers in a community form a local Farm Loan Association. Any ten such borrowers may form an association.

Each borrower must subscribe for stock in his local association in the amount of 5% of the loan he obtains. It is deducted from the proceeds of his loan. Borrowers or shareholders are responsible for the business management of their association up to the total amount of their stock, which insures their interest in the association affairs. When the borrowers' loan is paid, the association reimburses him for his stock, less any indebtedness that may be standing against it.

Purposes of Loans
Loans are made only to farmers on mortgages, as described. Borrowers must state the intended use of the loan and use the money in that way. He may borrow to purchase land for farm purposes; to buy live stock, equipment, fertilizers for proper and reasonable operation of the mortgage farm; to provide buildings or improve the land; to refinance a mortgage; to provide the owner of the mortgaged land with funds for general farming purposes. Loans are made from \$100 up, with preference given to loans under \$10,000.

After an application for loan is accepted by the local farm loan association, the property is appraised as soon as possible by an appraiser for the Land Bank, who makes a complete report to the Bank, with his recommendation on the amount of loan asked. Cost of obtaining the loan is about 1 1/2% or less of the total loan for appraisal, determination of title etc.

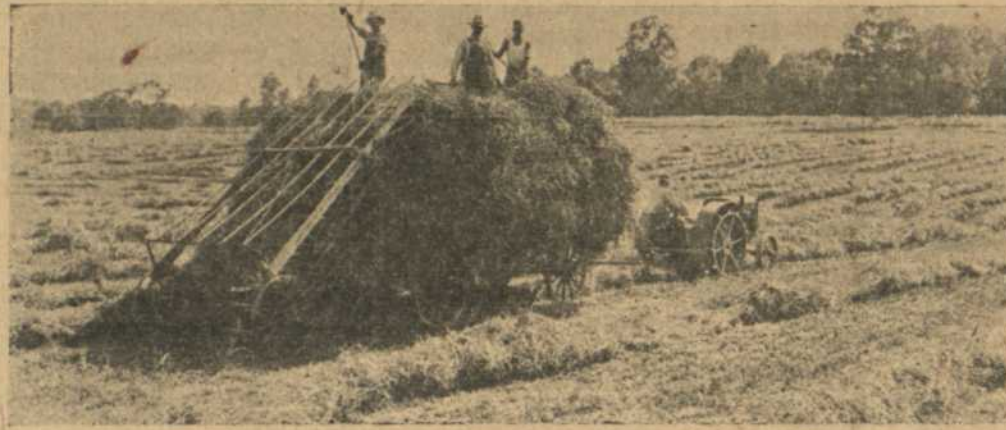
A semi-annual payment of \$30 will retire in 36 years a \$1,000 loan bearing 5% interest. Thus \$60 a year, which is 6% on the \$1,000 serves to pay off interest and principal in 36 years. One percent applies on the principal. Twenty year loans are made at a somewhat higher semi-annual payment, but the interest on the unpaid balance is 5%. Federal Land Bank loans may be paid off in fewer years if the borrower wishes to do so.

AMERICAN FARM BUREAU BROADCASTS

Listen in over WJR on Dec 9th, during the Farm and Home hour and hear the regular monthly American Farm Bureau program and also on Dec. 12th, during the same hour and hear the A. F. B. F. program given during the national convention.

Andrew Carnegie prepared the following epitaph for himself: "Here lies a man who knew how to enlist in his service better men than himself."

We're Still Buying Seeds for 1934



There's Satisfaction and Profit in a Farm Bureau Alfalfa Field

We want Michigan grown clover seeds! June, Mammoth, Alsike, Sweet Clovers. Also Michigan grown alfalfa seed. You will find our buying policy and prices the best that present markets will warrant. We want to see you get the most out of your seed.

We have bought much seed this fall and appreciate our very good relations with the growers and co-op ass'ns. Our main buying season will soon be over. When we start bagging and shipping we're about through buying.

Send us an 8 ounce sample of your seed. Make it representative by taking equal amounts from each bag. Write us the amount of seed you have and we will quote you. We send sample mailing bags on request.

Seed Cleaning Service! We're too rushed to handle custom cleaning after Jan. 1. Let us put your seed in A-1 condition in our modern seed cleaning plant. Charges very reason-

able. We clean and return seed to you as soon as possible. Will make you a price on cleaned seed if you request it. Ship seed by freight to Farm Bureau Services, Lansing, Michigan, freight prepaid, preferably. Tag each bag with your name and address. Write us a letter stating total number of bags and giving us complete instructions on cleaning your seed.

Seed Cleaning Charges: Based on weight of seed as received at our cleaning plant. 20c per bu. for one run over mill; 35c for 2 runs. We advise 2 if seed is very dirty. \$1.00 per bu. of seed charge for removing buckhorn. Includes above mill runs. \$1.25 per hr. for hulling sweet clover, mill runs additional as above.

Decide to buy Farm Bureau seed in 1934! We guarantee our alfalfa and clover seeds to be northern grown, winter hardy, top quality seeds of the best varieties for Michigan. Our complete line of field seeds is selected on the basis of quality and production. Farm Bureau Brand seeds are packed in sealed, trade-marked bags and are guaranteed to be as represented on the analysis tag. The best seed costs less and produces more when harvest rolls around.

Farm Bureau Services works closely with seed producing farmers, the State College Farm Crops Dep't, State Dep't of Agriculture and the Michigan Crop Improvement Ass'n to assure you the best in Farm Bureau Brand Field Seeds.

Milk Maker Dairy Feed

with home grown grains and legume hay is unbeatable

MILKMAKER
24% Protein

GUARANTEED ANALYSIS

Protein(Minimum) 24.00%
 Fat(Minimum) 4.00%
 Fiber(Maximum) 9.00%
 Digestible Protein 22.98%
 Total Digestible Nutrients...1483.54 lbs.

OPEN FORMULA

250 lbs. Soy Bean Oil Meal
 250 lbs. Cottonseed Meal
 200 lbs. Linseed Oil Meal, 34% protein
 100 lbs. Corn Distillers' Dried Grains
 500 lbs. Corn Gluten Feed
 200 lbs. Standard Wheat Bran
 100 lbs. Fine Ground Oats
 140 lbs. Ground Yellow Corn
 100 lbs. Cane Molasses
 100 lbs. Standard Wheat Middlings
 20 lbs. Steamed Bone Meal
 20 lbs. Ground Limestone (Calcium Carbonate)
 20 lbs. Salt

FEEDING INSTRUCTIONS

With	Milk Maker 24%	Cereal Grains
Alfalfa Hay	100 lbs.	150-200 lbs.
Clover Hay	100 lbs.	90-125 lbs.
Mixed Hay	150 lbs.	75-100 lbs.
Timothy Hay or Corn Stover	200 lbs.	75-100 lbs.

Note: If hay is best quality, use larger amount of cereal grain, as quality of hay gets poorer reduce amount of cereal grain toward lower amount recommended.

BALANCE YOUR COW'S RATION

In using any of the above grain mixtures or Milk Maker straight, the grain ration should be fed as follows:

1 lb. grain mix to 4 lbs. 3 1/2% milk.
 1 lb. grain mix to 3 1/2 lbs. 4% milk.
 1 lb. grain mix to 3 lbs. 4 1/2% milk.

If you know the amount of butterfat the cow produces daily, feed 7 to 8 pounds of the grain mixture daily for each pound of butterfat produced.

1,200 MICHIGAN FARMERS in cow testing ass'ns are there to help their herds make more money. Cost of feed and results from feed are important items.

FOR YEARS Milk Maker fed herds have won 1st and 2nd place for herd butterfat production and 4 or more of the first 10 places among 1,200 herds of all breeds.

LIKE YOUR HERD, the job of these herds is to produce income. They receive every day good farm care. The fact is these winning herds make money.

THEY PROVE AGAIN that Milk Maker with home grown grains and legume hay increases production and makes money.

MILKMAKER Means Money Maker

MILKMAKER FORMULAS
16, 24 and 32% Protein



With Mermash 16%

MORE EGGS from the same hens with no increase in feed costs lowers costs and increases profits.

MERMASH 16% has achieved this satisfying result so many times in pen against pen tests with other methods of feeding that it has this extra recommendation to flock owners.

POULTRY RESPONDS to Mermash, a 16% protein feed. It is made of the best home grown grains, meat scraps and other feedstuffs to which has been added a ration of ocean kelp and fish meal to supply iodine and other food minerals lacking in our soils and crops.

WE MAKE Mermash with or without cod liver oil. 5 lbs. of NOPCO XX cod liver oil in Farm Bureau feeds has the vitamin D value of 40 lbs. of ordinary cod liver oil. Farm Bureau feeds are cheaper to feed since less cod liver oil is required.



FARM BUREAU WINTER OIL

FARM BUREAU ZERO GRADE oils start easy and lubricate well in the coldest weather that the Old Man from the North can send to Michigan.

FARM BUREAU OILS and their 30 to 35c per quart brothers, owned by the great oil firms, come from the same field. Farm Bureau oils, refined by the best process for quality, cost you less because the Michigan, Indiana and Ohio Farm Bureaus own a co-operative blending and distributing plant. Ask your co-op for Farm Bureau oil.



Ask For FARM BUREAU Coal Salt Oys ter Shell

For Farm Bureau Supplies

SEE YOUR CO-OP OR FARM BUREAU DEALER

Write Us If You Have No Dealer
FARM BUREAU SERVICES, Inc., Lansing, Mich.

Ask For FARM BUREAU Fence Lime Greases