

## Low-Cost, Energy-Efficient Window Treatments

### "DRAFT DODGER"

To increase comfort, use a "draft dodger." It's a long sand-filled tube that blocks drafts when placed against the bottom edge of closed doors or closed draperies.



\*draft dodger



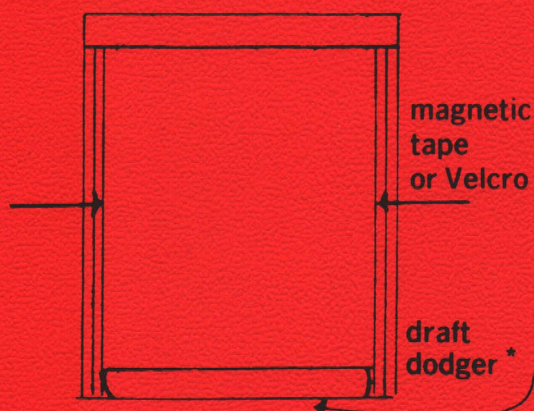
\*floor length



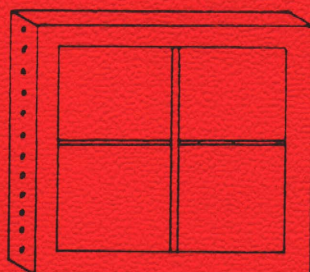
\*sill

### DRAPERY SEALS

Sealing drapery edges to the sides of windows with magnetic tape or Velcro tape will cut down on the heat loss from your home.

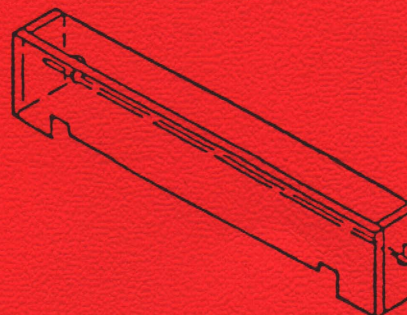
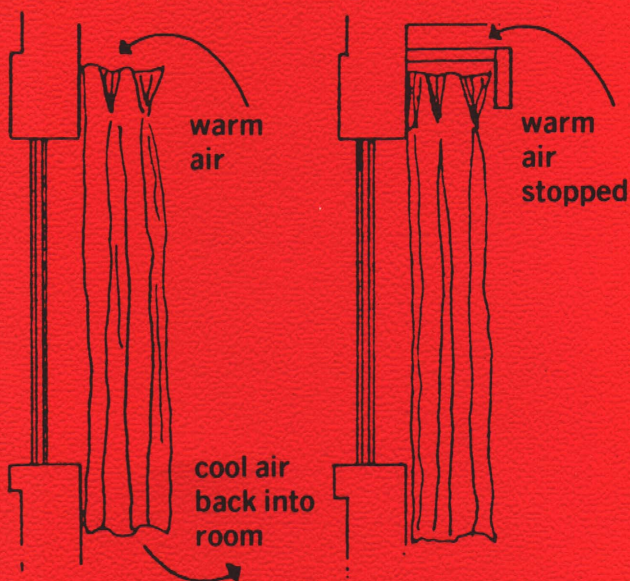


glued magnets



### CLOSED CORNICE BOARD

A closed top cornice board will help stop heat loss from windows.



Cooperative Extension Service  
Michigan State University

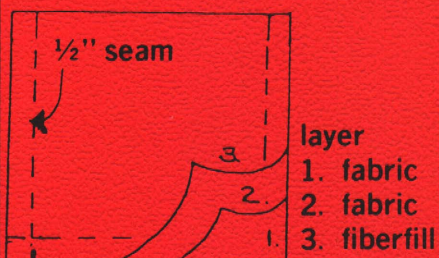
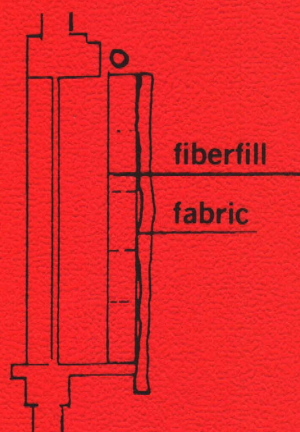
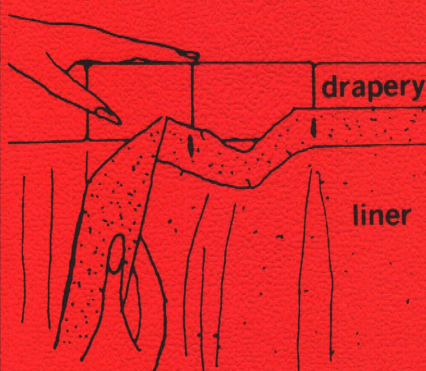
This information is for educational purposes only. Reference to commercial products or trade names does not imply discrimination or endorsement by the Cooperative Extension Service. Cooperative Extension Service Programs are open to all without regard to race, color, creed, or national origin. Issued in furtherance of cooperative extension work in agriculture and home economics, acts of May 8, and June 30, 1914, in cooperation with the U.S. Department of Agriculture. Gordon E. Guyer, Director, Cooperative Extension Service, Michigan State University, E. Lansing, MI 48824

1P-5M-7-79-HE, Price 10 cents. Single copy free to Michigan residents.

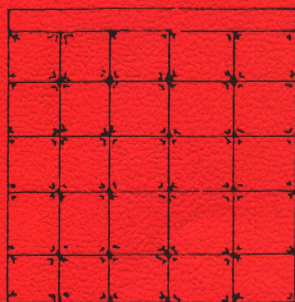


## CURTAIN LINERS

Curtain liners, either purchased or made at home, will help keep heat inside your home.

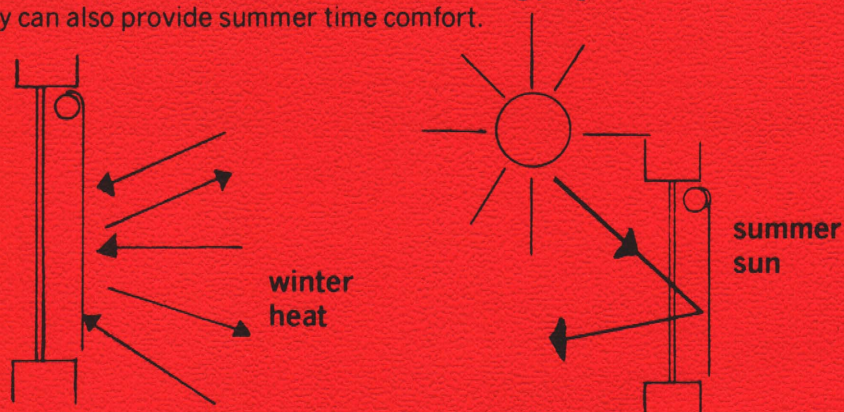


button holes



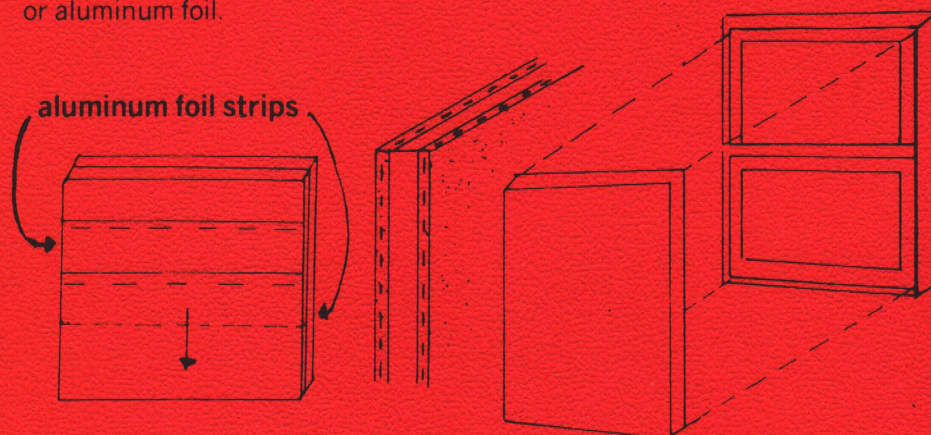
## ROLLER SHADES

Roller shades, mounted within the frame, fitting close to the top edges of the window, will stop heat loss if they fit snugly against the window sill. They can also provide summer time comfort.



## STYROFOAM INSULATION

Styrofoam insulating panels form an effective barrier at windows and keep expensive heat inside your home. Cover the panels with fabric, wall paper, or aluminum foil.



## STORM WINDOWS

Storm windows made from furring strips and plastic sheets will increase winter comfort and cut heat loss. Mount them inside or outside your house.

