

# CLOTHING SAVERS

## Shopping For "Rewearables"



Having clothes is one thing. Having attractive, suitable, useful clothes is another. The big word in choosing rewearables is IF!

By Bernetta Kahabka

You can save money IF!

the clothes are in or near the size you need.  
 they aren't torn so much that they need much repair, or where it shows the most.  
 they are not badly faded or stained, especially where it shows the most.  
 they are easy to wash—if washable.  
 they can be drycleaned in a coin-op if drycleanable.  
 they are not badly worn or stained, especially where they should be strong, (knees, elbows, crotch, seat, underarm, seams).  
openings and fastenings are in good condition and usable (zippers work, buttons all on, buttonholes not torn).  
 the clothes are not out of style, too fancy, or too extreme to be really suitable and useful.  
 you have the time and can quite easily touch-up rewearables to make them look and fit better and be more useful.

FILE COPY  
DO NOT REMOVE

### CLOTHING SIZE GUIDE

Take a tape measure along.

Take with you a few general measurements of CLOTHES that already fit the person you are shopping for.

Write down each family member's clothing measurements, (not figure measurements) on a card. Turn over this page to 2 examples of cards which you can use when you go shopping.

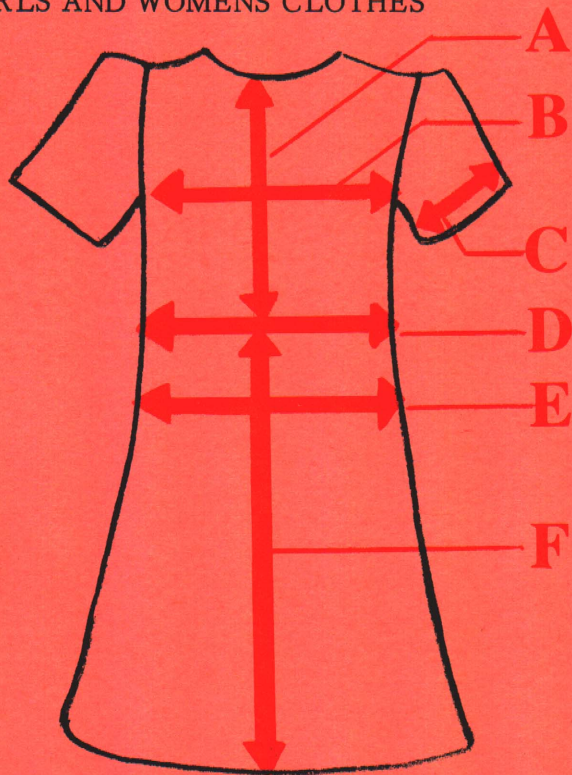
Check the measurements of the rewearables with the measurements on your card to find the best possible fit.

Remember, you are measuring CLOTHES that already fit them.

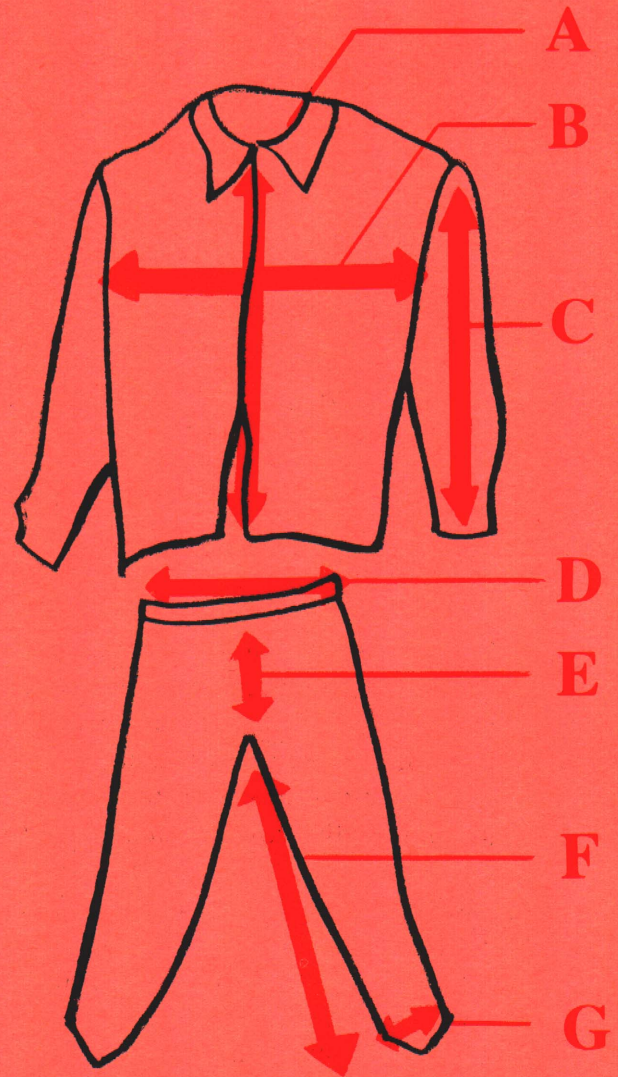
Use the cards when buying new clothes, too.



GIRLS AND WOMENS CLOTHES



MEN AND BOYS CLOTHES



Write the measurements in inches in the blanks. There is space enough for 3 persons' measurements.

Measurement:

A Neck to waist	<u>        </u>	<u>        </u>	<u>        </u>
	in.	in.	in.
B Across bust	<u>        </u>	<u>        </u>	<u>        </u>
	in.	in.	in.
C Across sleeve	<u>        </u>	<u>        </u>	<u>        </u>
	in.	in.	in.
D Across waist	<u>        </u>	<u>        </u>	<u>        </u>
	in.	in.	in.
E Across hips	<u>        </u>	<u>        </u>	<u>        </u>
	in.	in.	in.
F Waist to hem	<u>        </u>	<u>        </u>	<u>        </u>
	in.	in.	in.
Other	<u>        </u>	<u>        </u>	<u>        </u>
	in.	in.	in.

Measurement:

A Shirt length	<u>        </u>	<u>        </u>	<u>        </u>
	in.	in.	in.
B Across chest	<u>        </u>	<u>        </u>	<u>        </u>
	in.	in.	in.
C Sleeve length	<u>        </u>	<u>        </u>	<u>        </u>
	in.	in.	in.
D Across hips	<u>        </u>	<u>        </u>	<u>        </u>
	in.	in.	in.
E Crotch length	<u>        </u>	<u>        </u>	<u>        </u>
	in.	in.	in.
F Pants inseam	<u>        </u>	<u>        </u>	<u>        </u>
	in.	in.	in.
G Ankle width	<u>        </u>	<u>        </u>	<u>        </u>
	in.	in.	in.
Other	<u>        </u>	<u>        </u>	<u>        </u>
	in.	in.	in.