

MAJOR MICHIGAN SOIL ASSOCIATIONS

I. F. Schneider and E. P. Whiteside

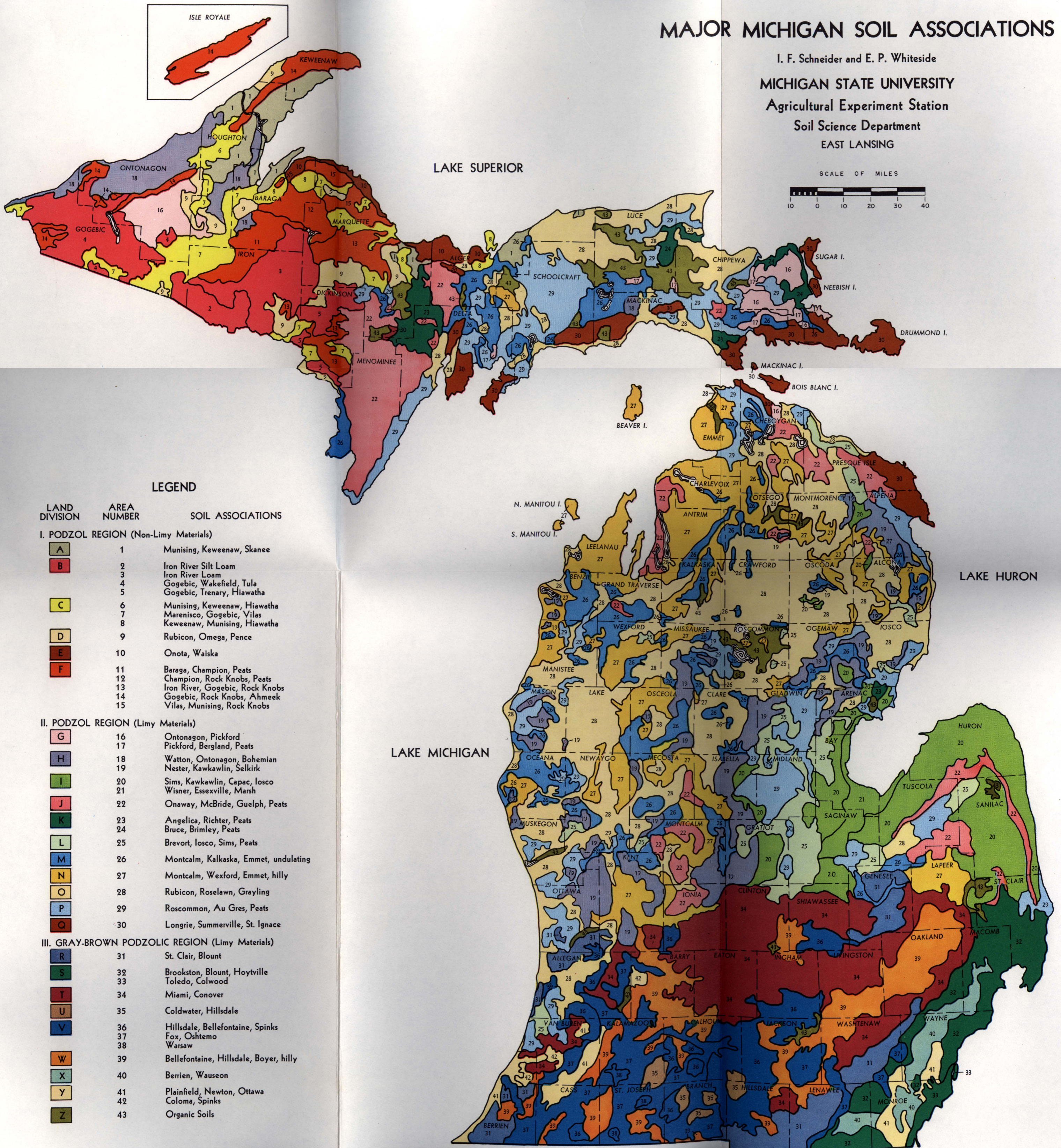
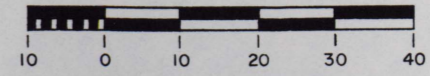
MICHIGAN STATE UNIVERSITY

Agricultural Experiment Station

Soil Science Department

EAST LANSING

SCALE OF MILES



LEGEND

LAND DIVISION	AREA NUMBER	SOIL ASSOCIATIONS
---------------	-------------	-------------------

I. PODZOL REGION (Non-Limy Materials)

A	1	Munising, Keweenaw, Skanee
B	2	Iron River Silt Loam
	3	Iron River Loam
	4	Gogebic, Wakefield, Tula
	5	Gogebic, Trenary, Hiawatha
C	6	Munising, Keweenaw, Hiawatha
	7	Marenisco, Gogebic, Vilas
	8	Keweenaw, Munising, Hiawatha
D	9	Rubicon, Omega, Pence
E	10	Onota, Waiska
F	11	Baraga, Champion, Peats
	12	Champion, Rock Knobs, Peats
	13	Iron River, Gogebic, Rock Knobs
	14	Gogebic, Rock Knobs, Ahmeek
	15	Vilas, Munising, Rock Knobs

II. PODZOL REGION (Limy Materials)

G	16	Ontonagon, Pickford
	17	Pickford, Bergland, Peats
H	18	Watton, Ontonagon, Bohemian
	19	Nester, Kawawlin, Selkirk
I	20	Sims, Kawawlin, Capac, Iosco
	21	Wisner, Essexville, Marsh
J	22	Onaway, McBride, Guelph, Peats
K	23	Angelica, Richter, Peats
	24	Bruce, Brimley, Peats
L	25	Brevort, Iosco, Sims, Peats
M	26	Montcalm, Kalkaska, Emmet, undulating
N	27	Montcalm, Wexford, Emmet, hilly
O	28	Rubicon, Roselawn, Grayling
P	29	Roscommon, Au Gres, Peats
Q	30	Longrie, Summerville, St. Ignace

III. GRAY-BROWN PODZOLIC REGION (Limy Materials)

R	31	St. Clair, Blount
S	32	Brookston, Blount, Hoytville
	33	Toledo, Colwood
T	34	Miami, Conover
U	35	Coldwater, Hillsdale
V	36	Hillsdale, Bellefontaine, Spinks
	37	Fox, Oshtemo
	38	Warsaw
W	39	Bellefontaine, Hillsdale, Boyer, hilly
X	40	Berrien, Wauseon
Y	41	Plainfield, Newton, Ottawa
	42	Coloma, Spinks
Z	43	Organic Soils