

# CODLING MOTH CONTROL SUGGESTIONS

*By Ray Hutson*

FILE COPY  
DO NOT REMOVE

MICHIGAN STATE COLLEGE :: EXTENSION DIVISION  
EAST LANSING

JAN 30 1943



U. S. DEPARTMENT OF AGRICULTURE  
EXTENSION SERVICE  
WASHINGTON, D. C.  
OFFICIAL BUSINESS

PENALTY FOR PRIVATE USE TO AVOID  
PAYMENT OF POSTAGE  
\$300

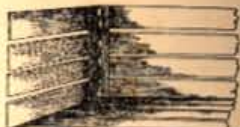
M. L. Lowe  
202 Post Office Bldg.  
Lansing Mich.

**CODLING MOTH CONTROL SUGGESTIONS**  
 Supplementary Measures "Hit" Codling Moths When They Cannot Fly Away

**GOOD CONTROL MEASURES ARE POSSIBLE IN THE INACTIVE SEASON**



*Larvae in Cases Under Rough Bark*



*Larvae in Crevices of Crates*



*Brush, Props, etc., Shelter Larvae*

**LARVAE OVERWINTER WHEREVER THEY FIND SHELTER**

Prompt disposal of drops and culls, scraping the trees for banding, and keeping crates in moth-proof storage, when not needed, will aid the spraying program.



*Wormy Apples Drop Readily*



*Scraping Trees*



*Properly Banded Trees*



*Mothproof Storage*



*Dead Larvae in Bands—  
Burn Bands in Winter*

**FIRST BROOD CONTROL DETERMINES CODLING MOTH DAMAGE**



*Calyx Cluster*



*Infested Small Apples*



*Clusters Favor Larvae*

**SPRAY THOROUGHLY AND OFTEN WHILE APPLES ARE SMALL.**



*Apply Bands by June 15*



*Properly Hung Trap*



*Bait Trap with Moths*



*Destroy Thinnings and Drops*

**CONTROL FIRST BROOD** by thoroughly spraying with lead arsenate, 3 pounds per 100 gallons of spray, in calyx and first cover. Continue at 10- to 12-day intervals through July, using 1-4 zinc sulphate-lime as an arsenical corrective. If you have a severe infestation, add  $\frac{3}{4}$  pint nicotine sulphate or  $1\frac{1}{2}$  pounds fixed nicotine to the second and third arsenical cover sprays.

Have your name placed on your county agricultural agent's mailing list to receive spray notices.

**KEEP FRUIT COVERED DURING SECOND BROOD**



*Adult Moths*

**WATCH BAIT POTS**



*Stung Fruit*

**SPRAY FOR SECOND BROOD** as long as moths are flying. If you would avoid excess residue, change to a non-arsenical. Maintain coverage whatever you use. Late-season control reduces the number of overwintering larvae.